



Kodak EasyShare M381 Battery Latch Replacement

Use this guide to replace your battery door latch if it becomes cracked or defective.

Written By: Christina Hamby



INTRODUCTION

The battery latch can often crack, making the battery connection very weak. This guide will outline how to remove and replace it.



TOOLS:

- [Magnetic Project Mat](#) (1)
 - [Tweezers](#) (1)
 - [Phillips #00 Screwdriver](#) (1)
 - [Paper Clip](#) (1)
 - [Safety Glasses](#) (1)
 - [iFixit Opening Tools](#) (1)
-

Step 1 — Battery



- First, press in and slide forward the battery latch as indicated by the arrow.

Step 2



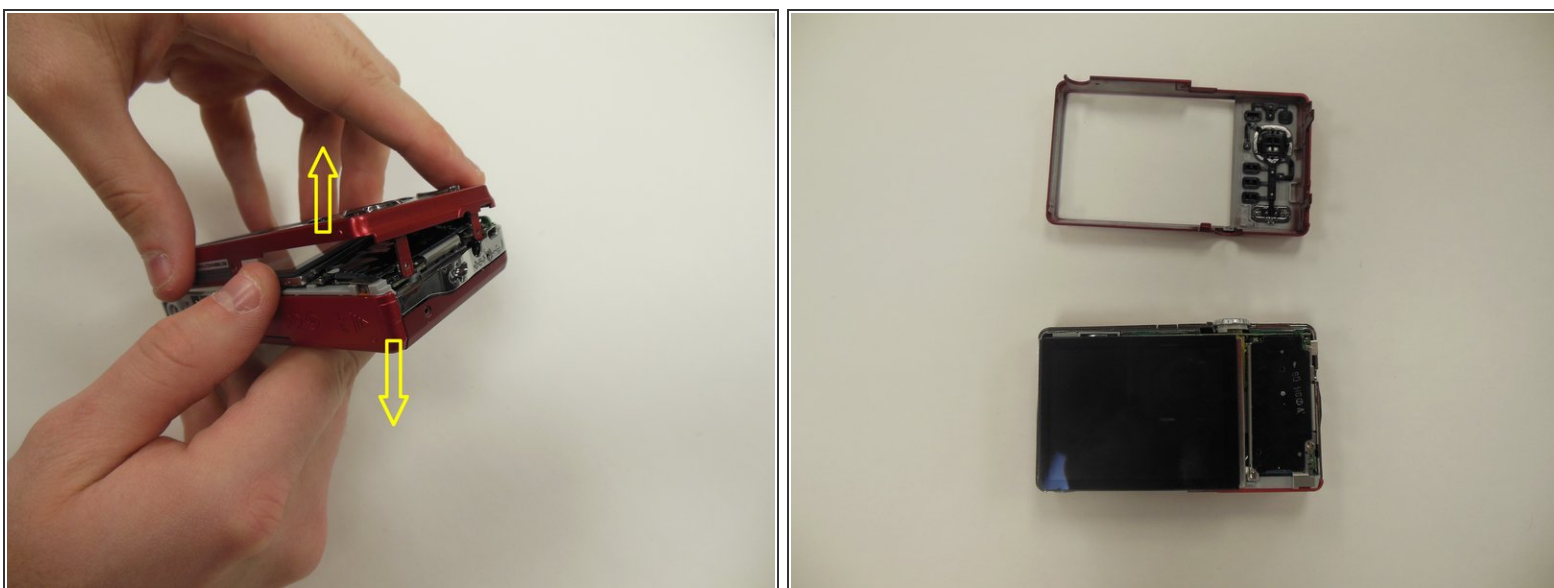
- Press down on battery until you hear a click and release it. Battery should easily slide out.

Step 3 — Back Panel Frame



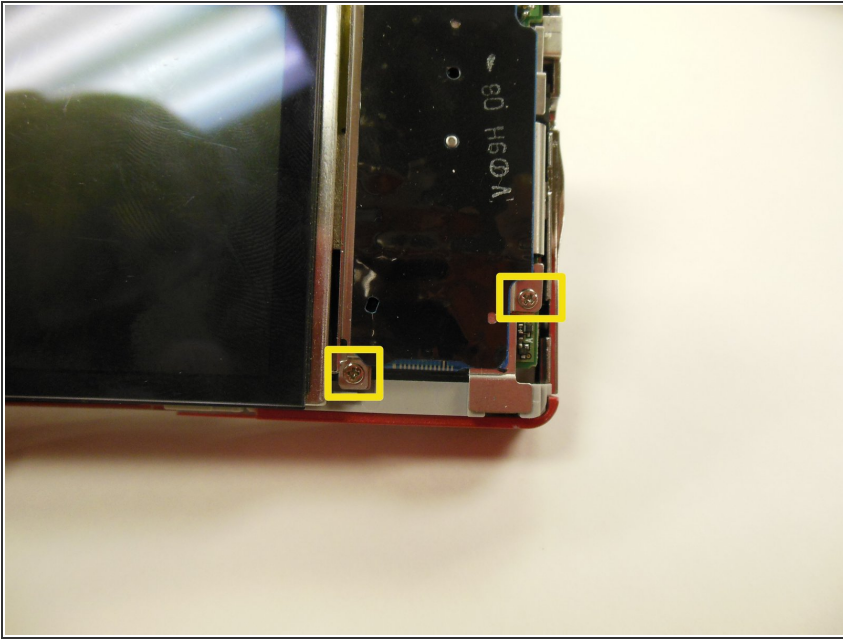
- Obtain screwdriver, and remove the 3.85 mm frame screws as highlighted.
- ⓘ Using a magnetized surface to keep from losing screws may be very helpful.

Step 4



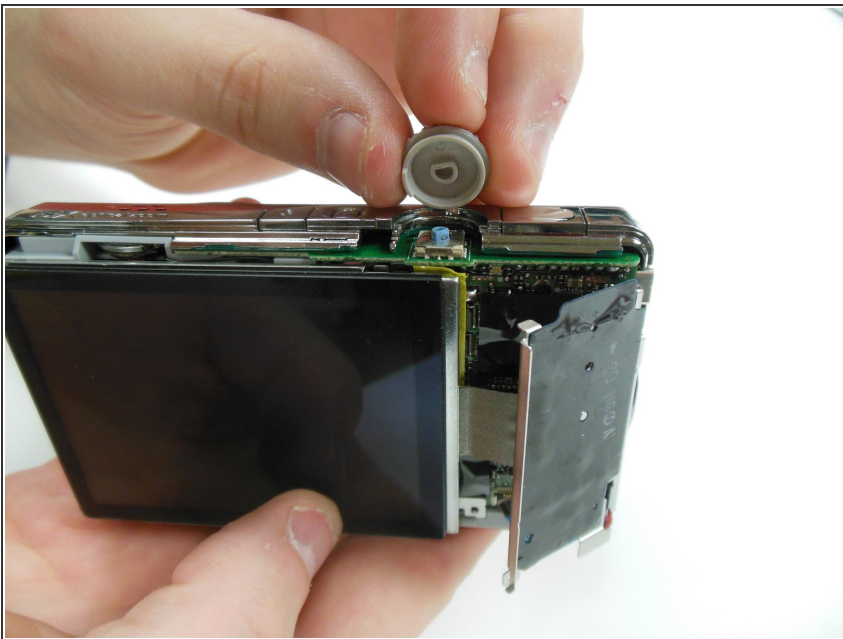
- After screws are removed, using both hands, carefully pull the frame apart from the camera as indicated.

Step 5 — Screen



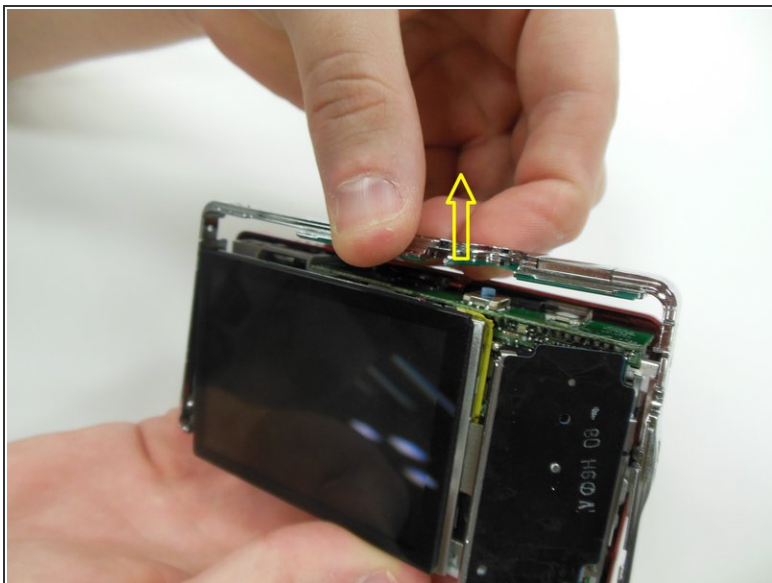
- Remove the two 3.85 mm screws on the bottom right of the camera, as indicated.

Step 6



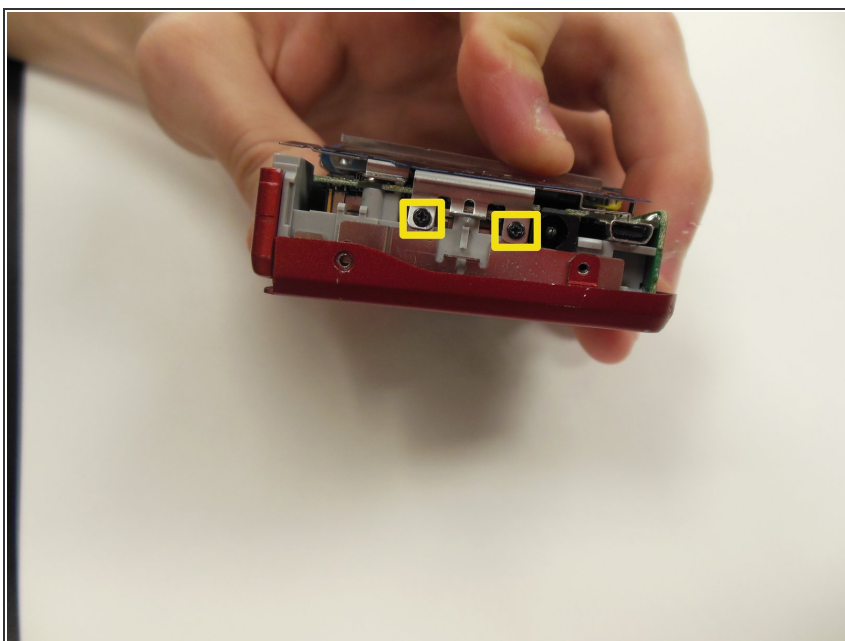
- Remove dial button located on top of camera, by gently pulling up.

Step 7



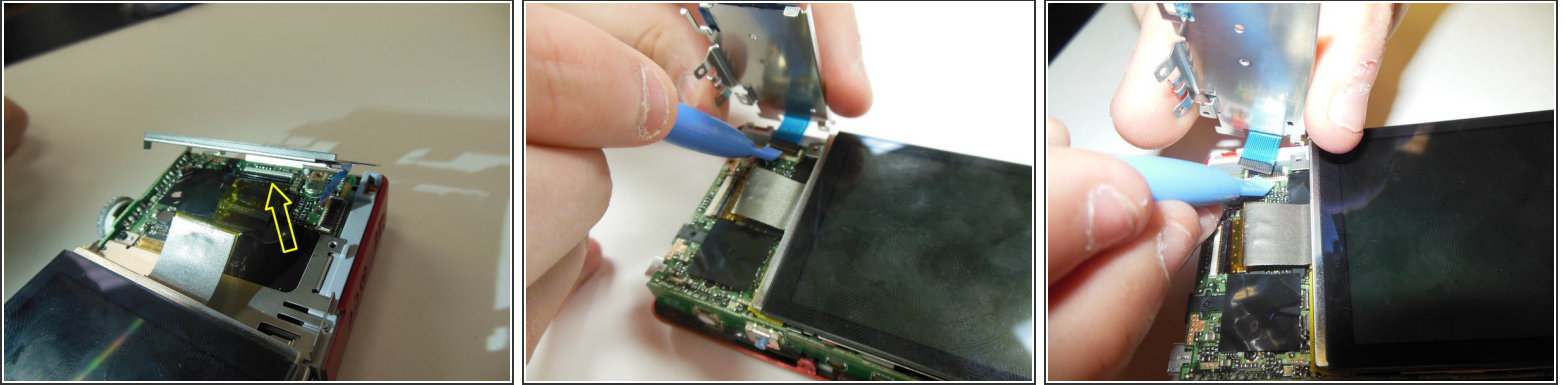
- Starting at one side, carefully work the chrome frame off of the camera itself.
- ⓘ Be careful not to disturb the shutter or flash buttons on top of the camera.

Step 8



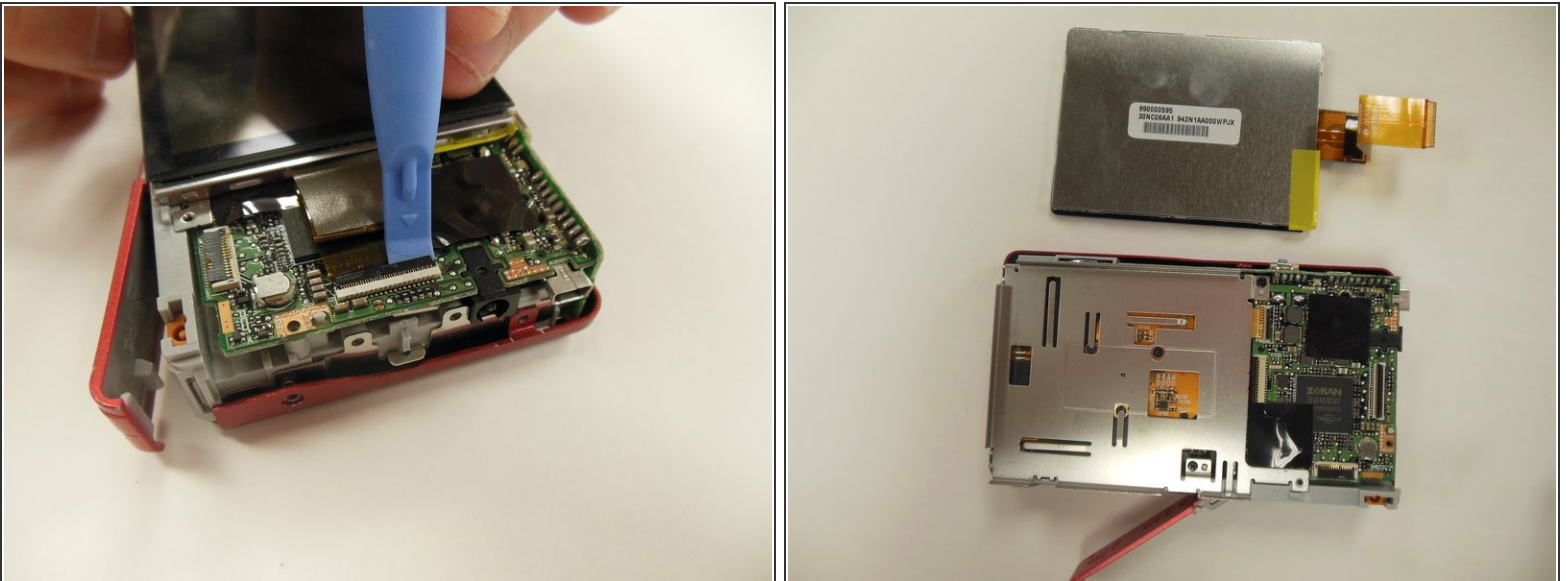
- On the right side of the camera, locate and remove the two 3.25 mm screws as highlighted.

Step 9



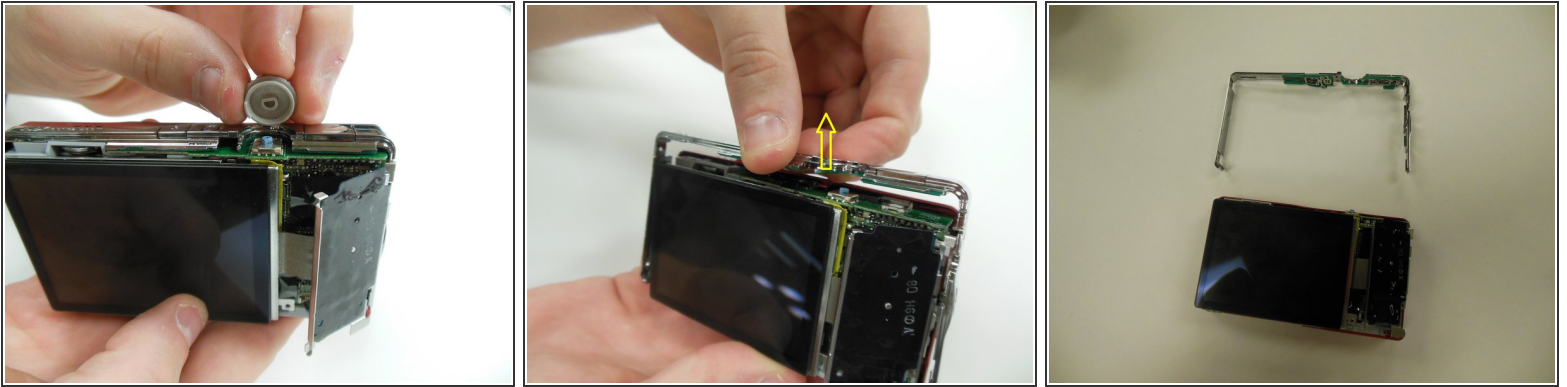
- Carefully lift the motherboard panel up, pulling towards the left. Make sure you do not rip the blue ribbon.
- Using a plastic opening tool, gently lift up on the ribbon fastener until it is in an upright position.
- Slide panel away from camera.

Step 10



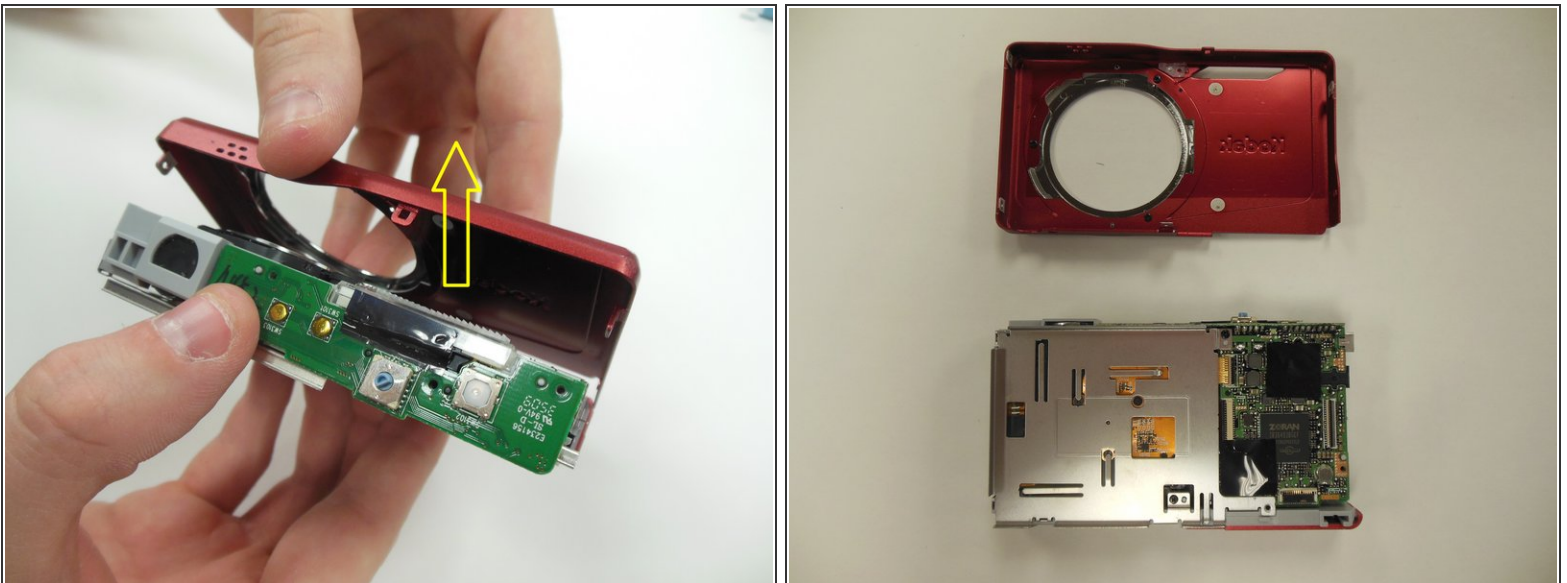
- Using a plastic opening tool, gently lift ribbon clamp as indicated to remove the screen ribbon from the motherboard.
- Screen should now be detached. Gently lift it away from the base of the camera.

Step 11 — Battery Latch



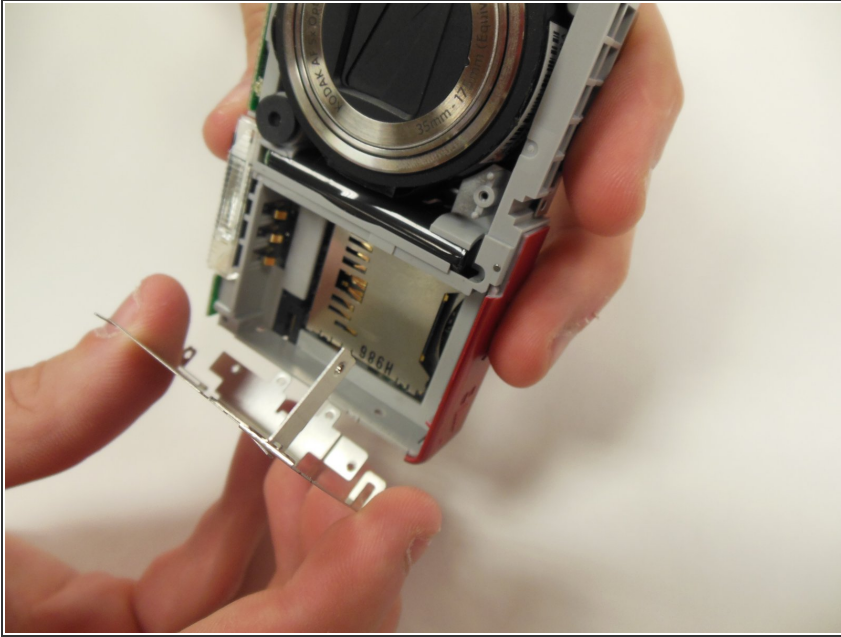
- Locate and remove selector dial on the top of the camera.
- This should free the chrome mid-frame that encompasses the camera. Carefully lift and remove it as well.

Step 12



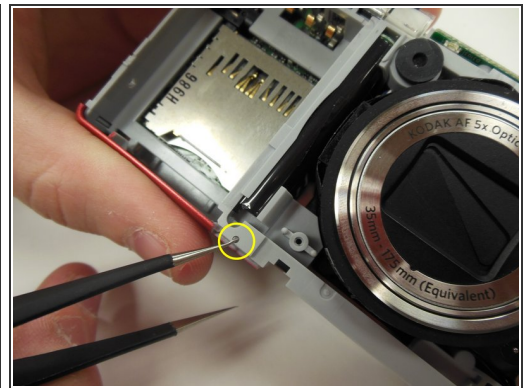
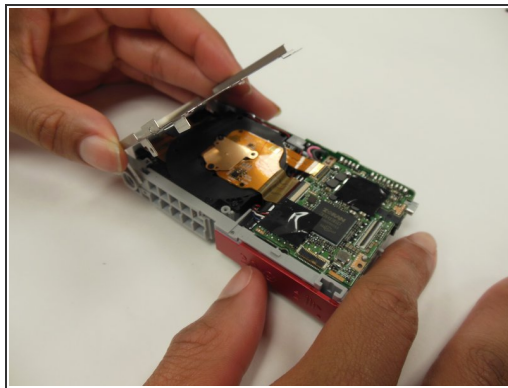
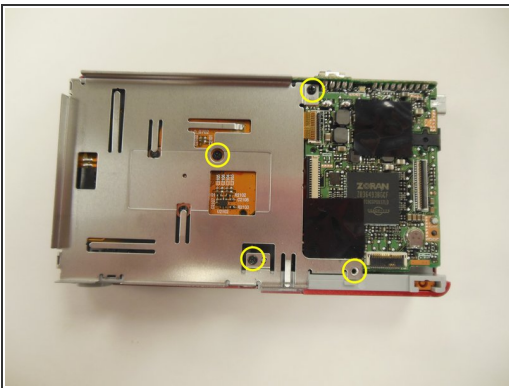
- Carefully lift and remove front covered panel from the camera.

Step 13



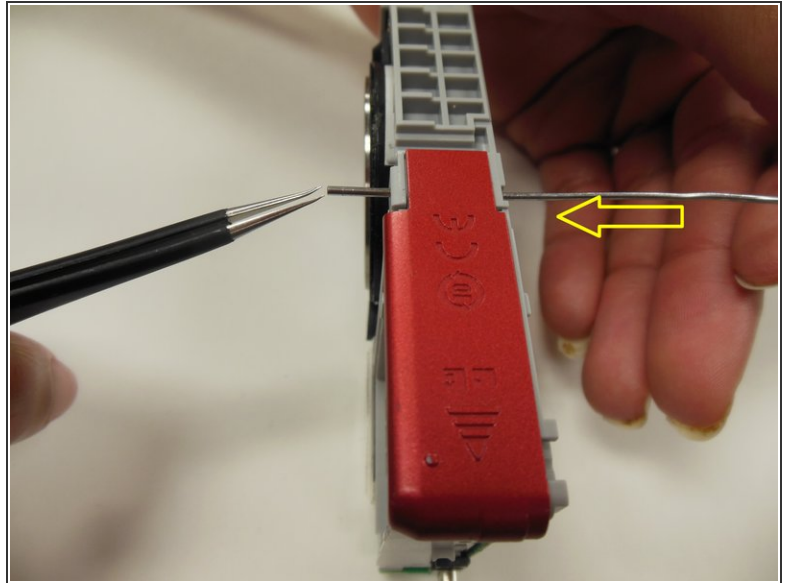
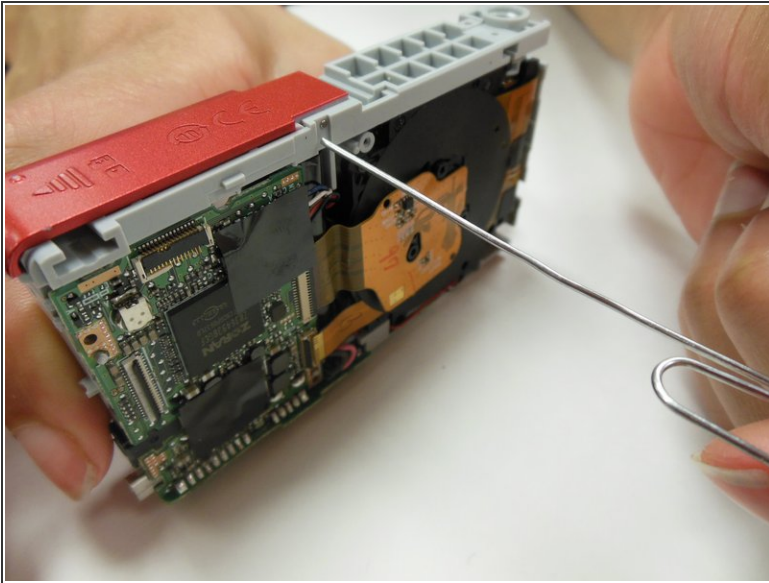
- Locate metal battery panel. Carefully lift and remove it as indicated.

Step 14



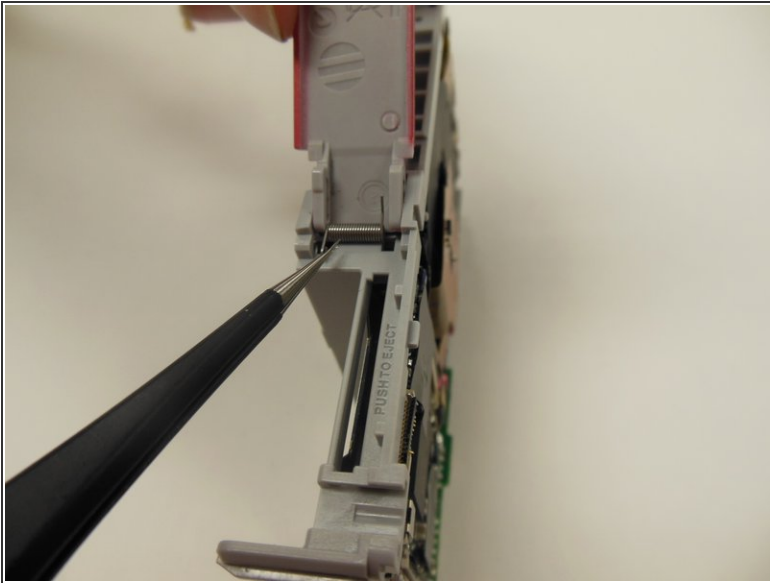
- Locate the four 3.25 mm screws holding the metal lens panel in place, and remove them.
- You should then be able to lift and remove the metal paneling. This will now expose the pin holding the battery latch in place as indicated.

Step 15



- Keeping the battery latch panel closed and in place, use a straightened paper clip (or similar tool) to push the pin out of the hole.
 - Use tweezers to securely remove pin.
 - ⓘ Placing the pin on a magnet pad or piece of tape is recommended to prevent from losing it.
- ⚠ The spring is under tension. When performing this step, it may fly out if not done correctly. Take proper precautions to minimize injury and loss of parts.

Step 16



- The latch can now easily be pulled out of place and removed.

To reassemble your device, follow these instructions in reverse order.