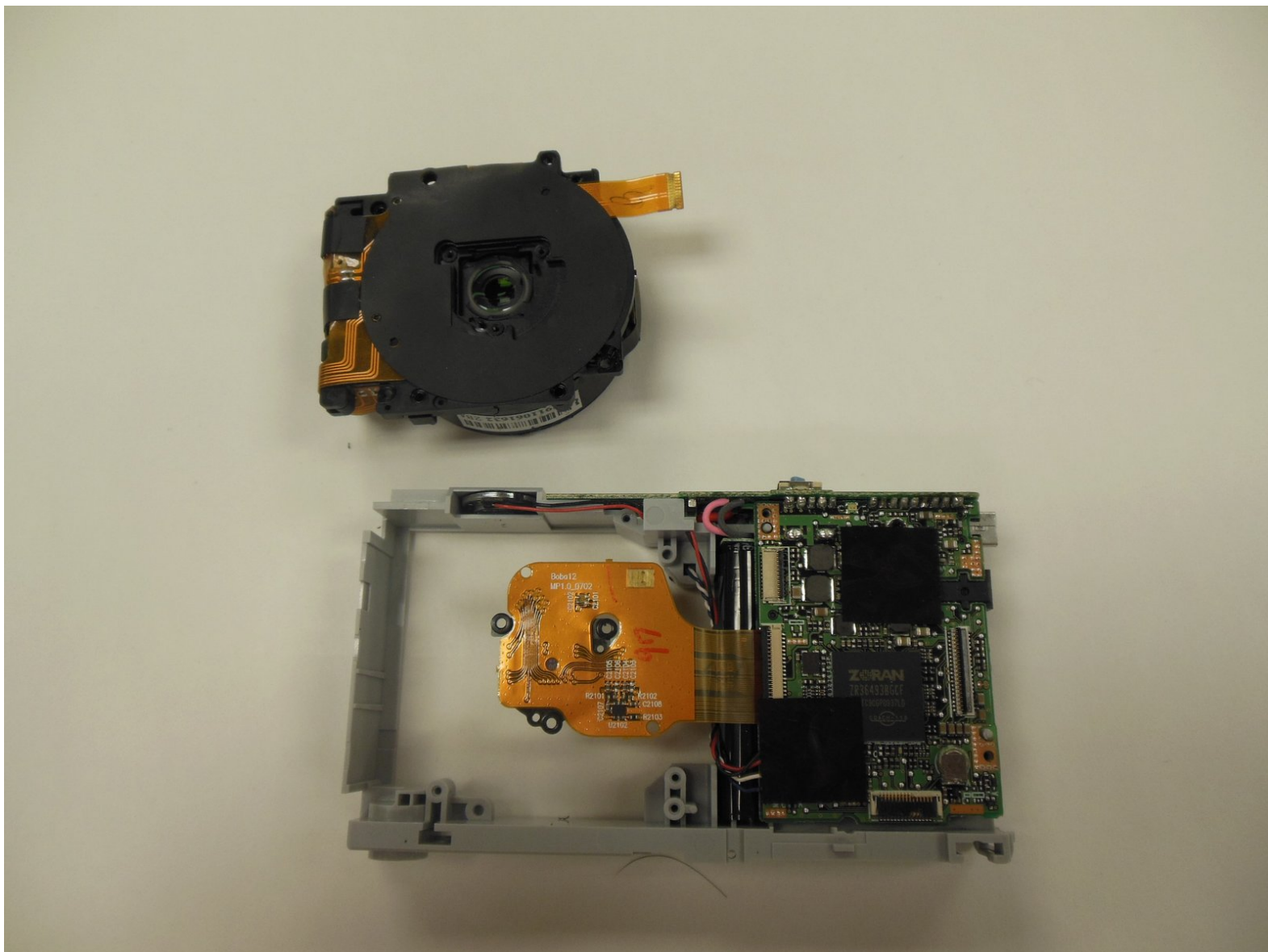




Kodak EasyShare M381 Lens/Optics Replacement

Use this guide to replace the lens.

Written By: Christina Hamby



INTRODUCTION

Technology in the lens can often become dysfunctional. This guide will show you how to remove it, so you can clean or replace it. Lens Part Number: k9711061632 2ba

TOOLS:

- [Magnetic Project Mat](#) (1)
 - [Tweezers](#) (1)
 - [Phillips #00 Screwdriver](#) (1)
 - [iFixit Opening Tools](#) (1)
-

Step 1 — Battery



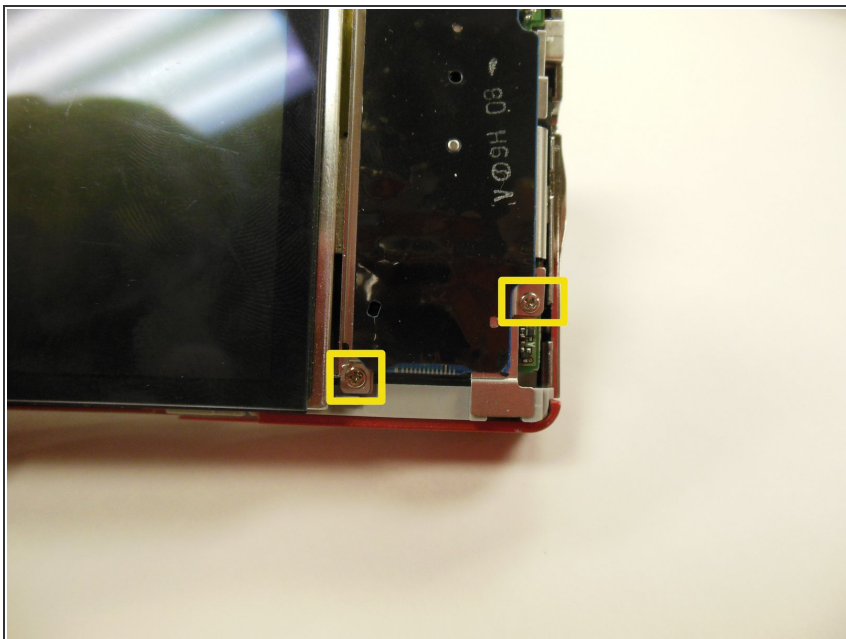
- First, press in and slide forward the battery latch as indicated by the arrow.

Step 2



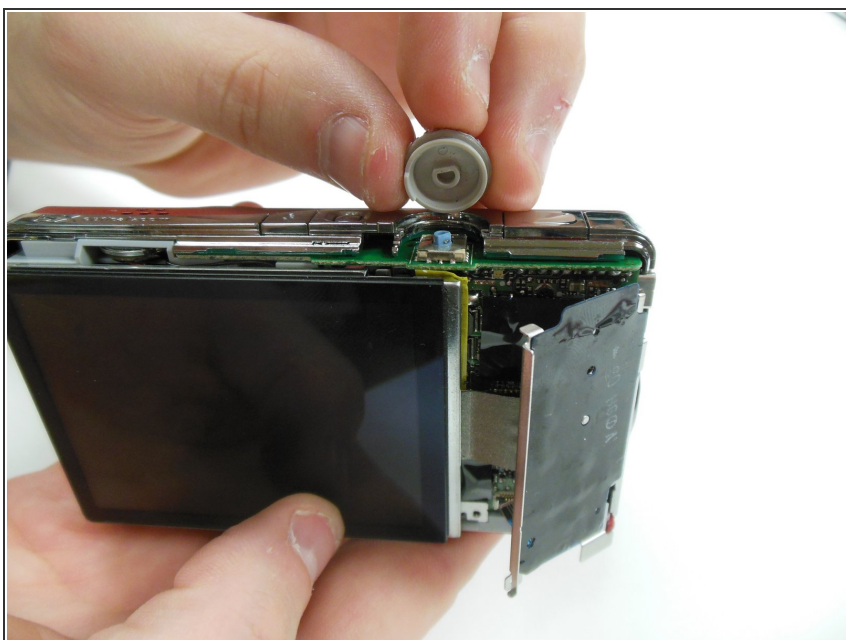
- Press down on battery until you hear a click and release it. Battery should easily slide out.

Step 3 — Screen



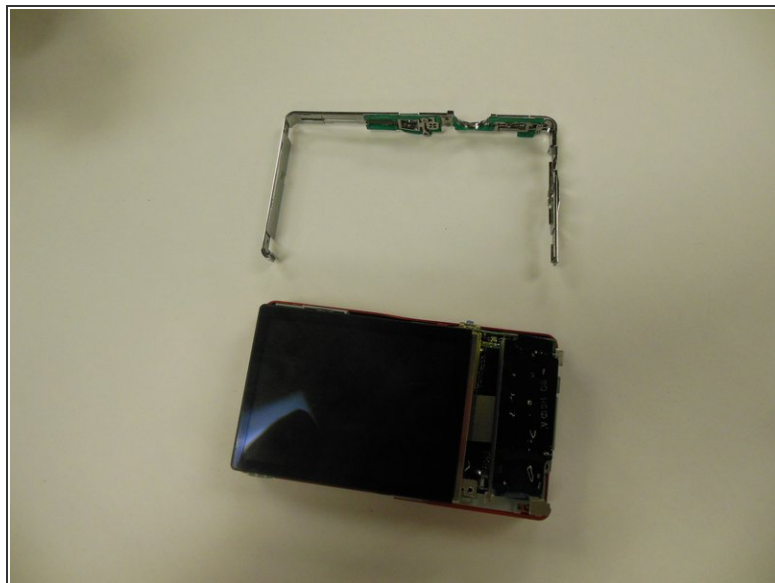
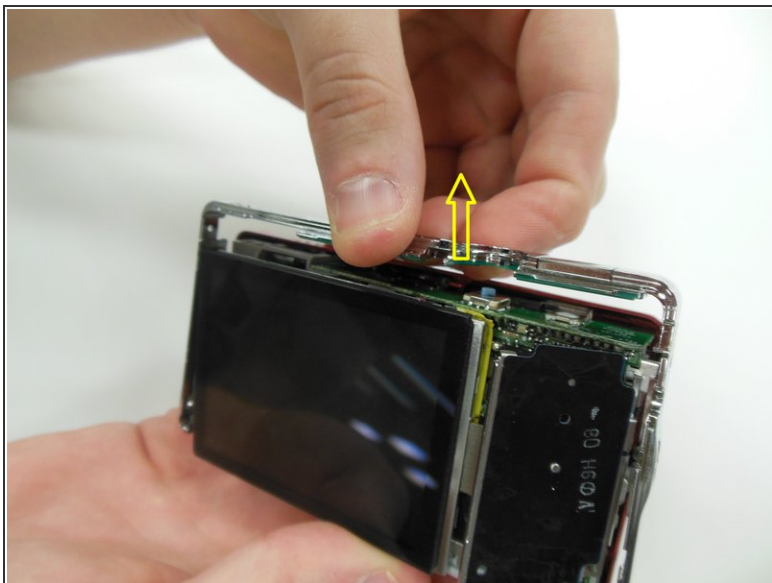
- Remove the two 3.85 mm screws on the bottom right of the camera, as indicated.

Step 4



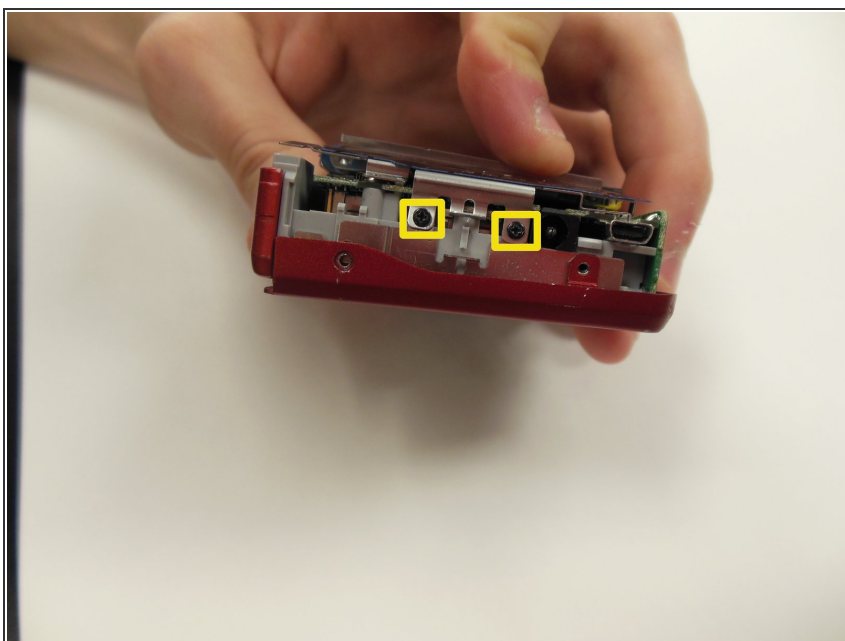
- Remove dial button located on top of camera, by gently pulling up.

Step 5



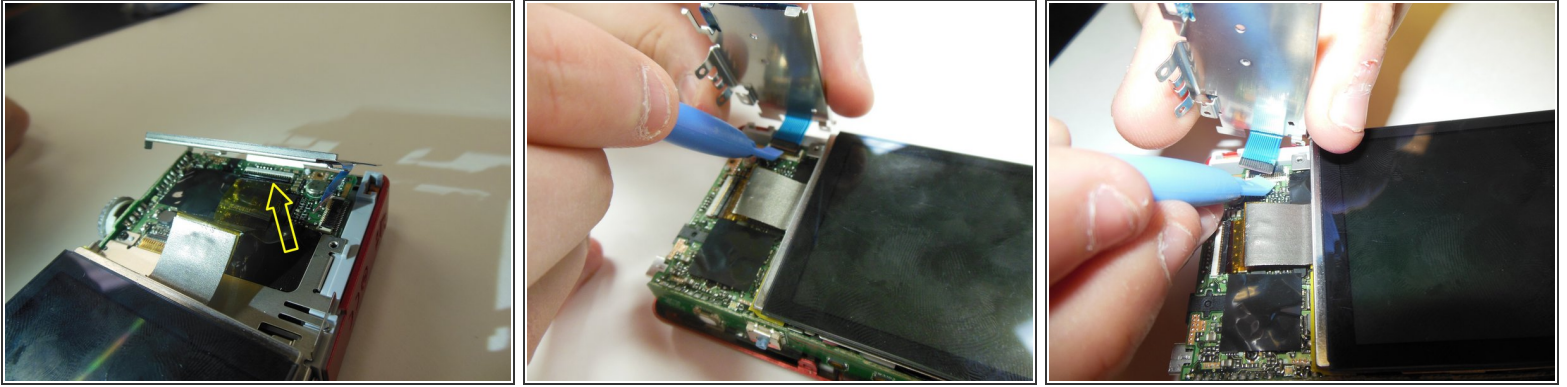
- Starting at one side, carefully work the chrome frame off of the camera itself.
- ⓘ Be careful not to disturb the shutter or flash buttons on top of the camera.

Step 6



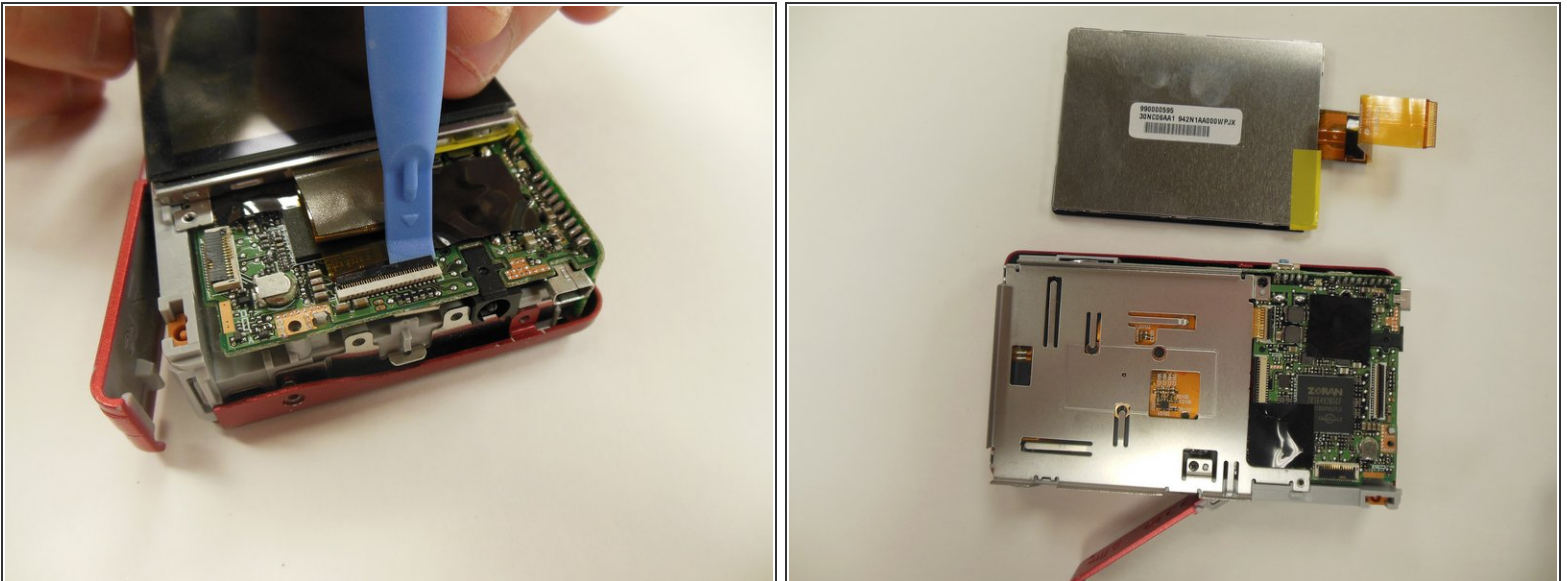
- On the right side of the camera, locate and remove the two 3.25 mm screws as highlighted.

Step 7



- Carefully lift the motherboard panel up, pulling towards the left. Make sure you do not rip the blue ribbon.
- Using a plastic opening tool, gently lift up on the ribbon fastener until it is in an upright position.
- Slide panel away from camera.

Step 8



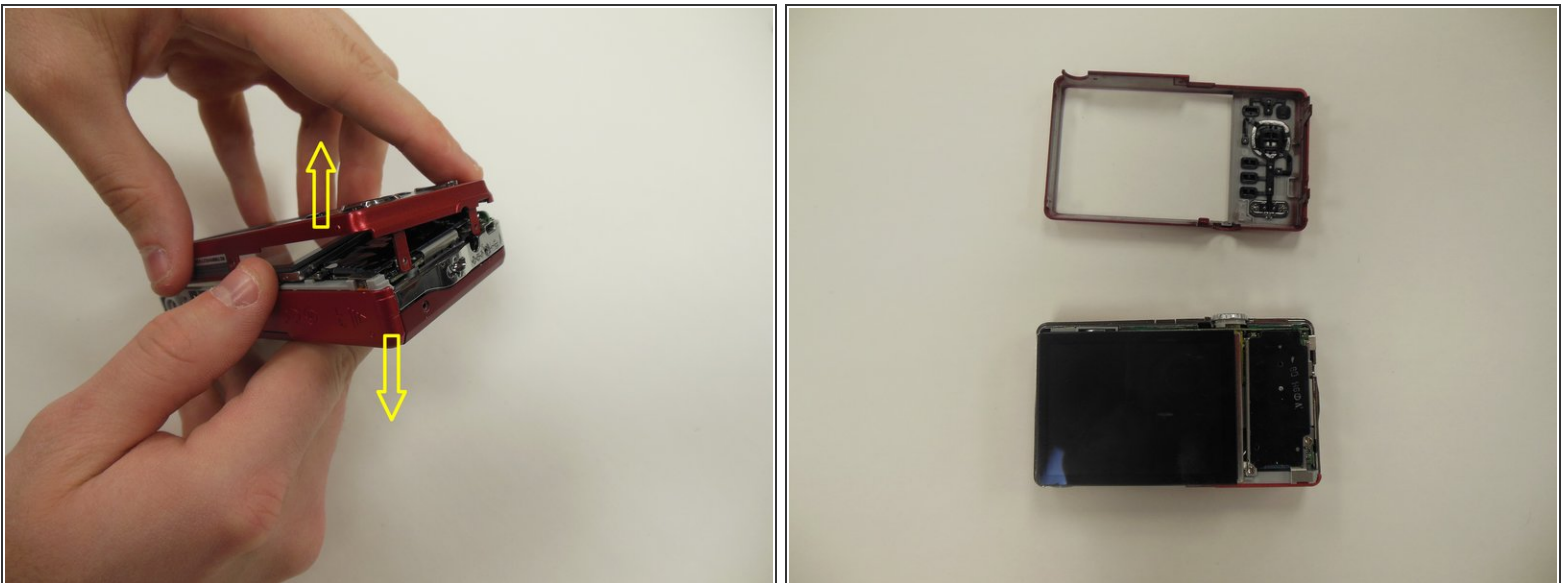
- Using a plastic opening tool, gently lift ribbon clamp as indicated to remove the screen ribbon from the motherboard.
- Screen should now be detached. Gently lift it away from the base of the camera.

Step 9 — Back Panel Frame



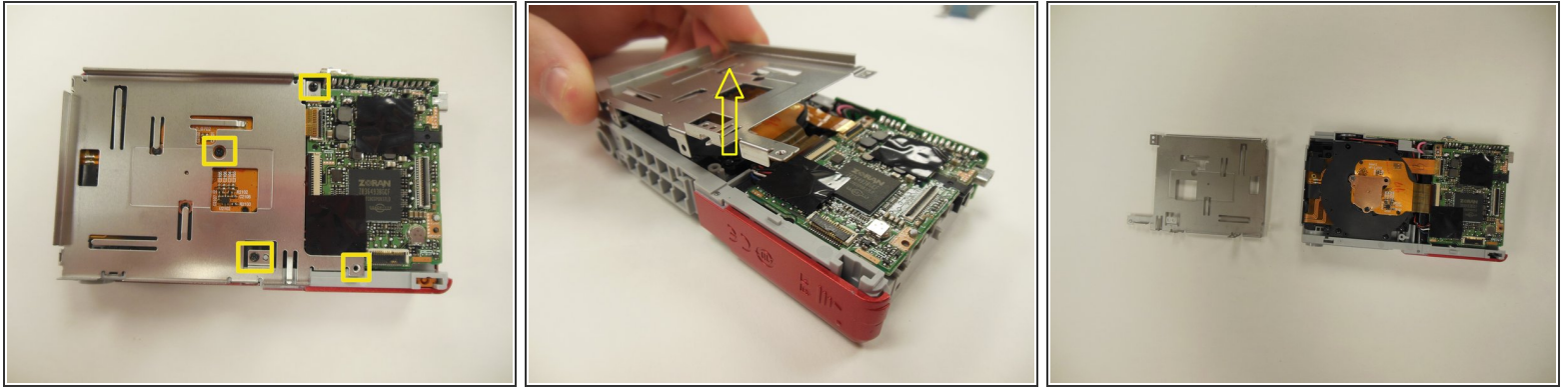
- Obtain screwdriver, and remove the 3.85 mm frame screws as highlighted.
- ⓘ Using a magnetized surface to keep from losing screws may be very helpful.

Step 10



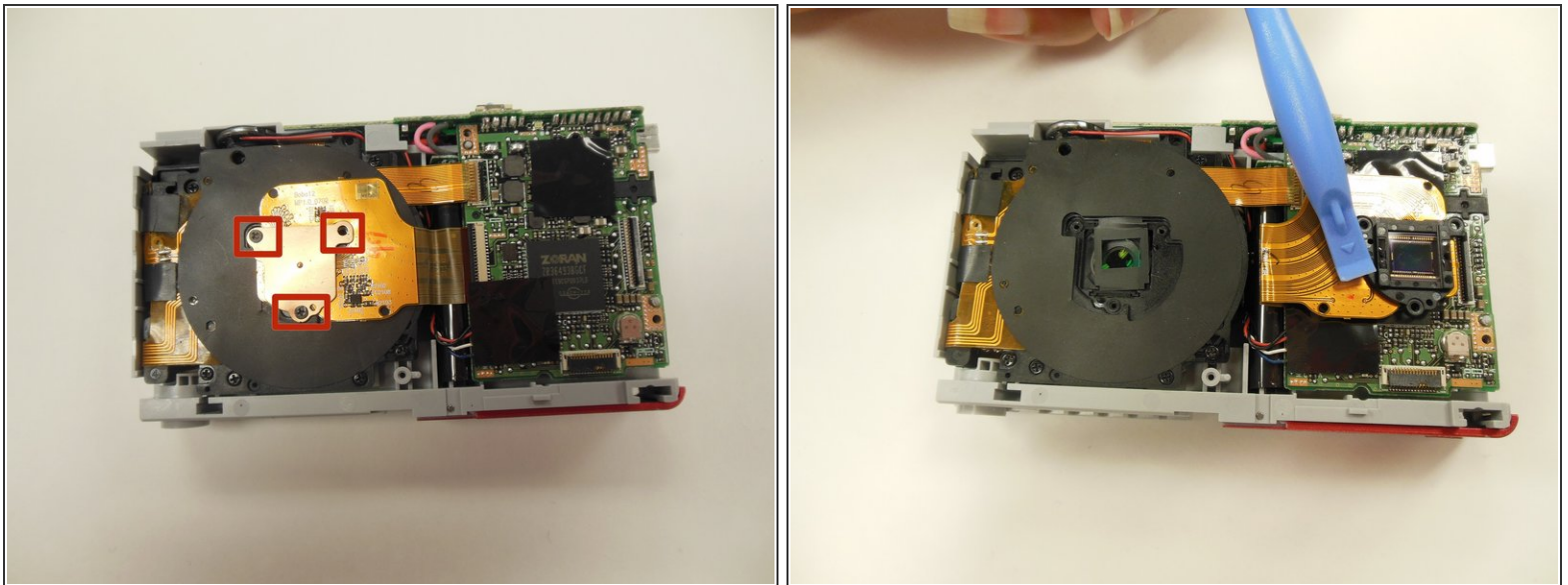
- After screws are removed, using both hands, carefully pull the frame apart from the camera as indicated.

Step 11 — Lens/Optics



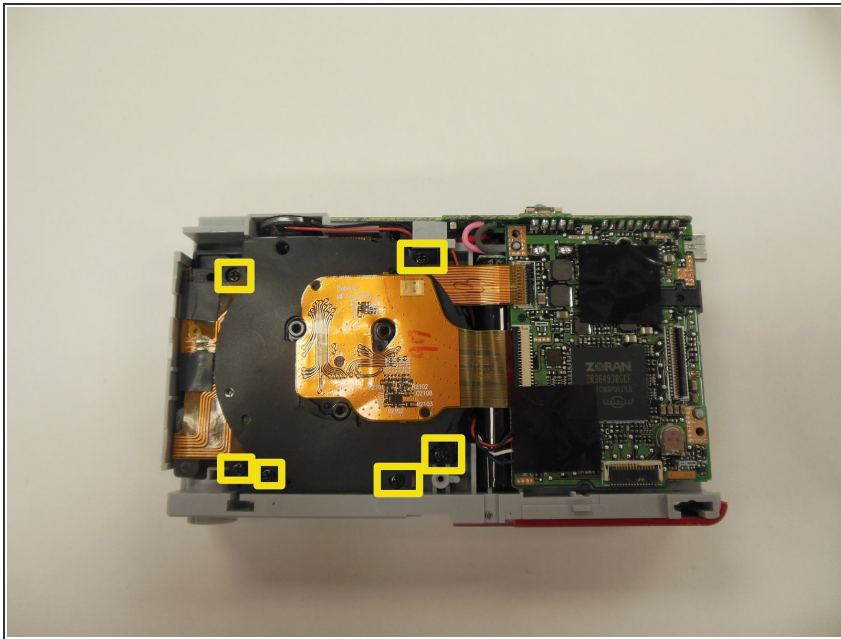
- Locate and remove the four 3.25 mm screws securing the back panel to the frame of the camera using the Phillips #00 screwdriver.
- Lift up and remove panel, detaching it from the camera frame.

Step 12



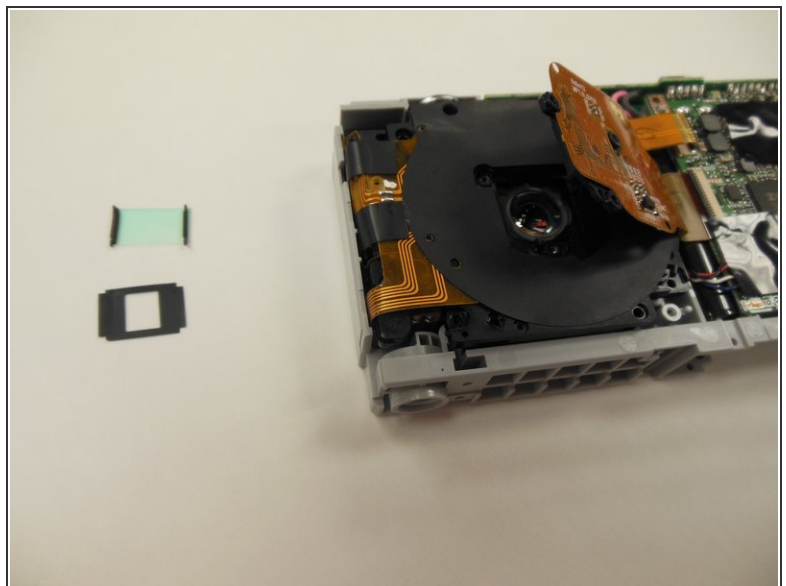
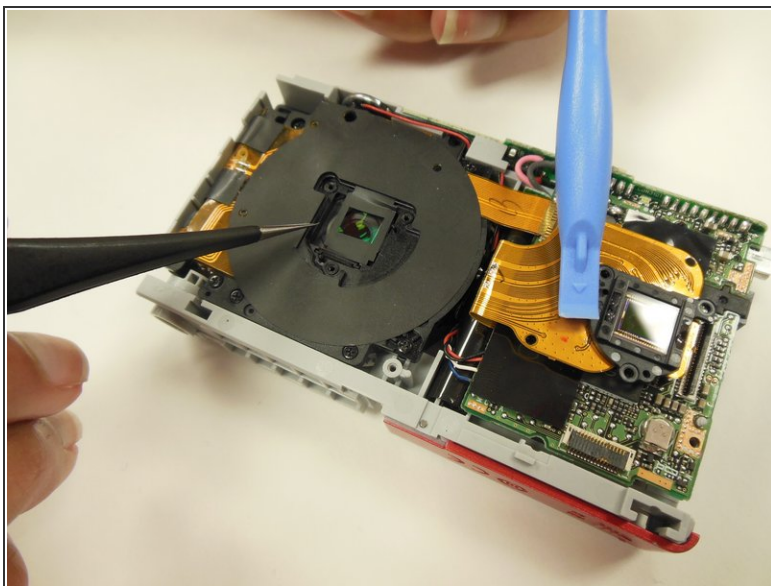
- Remove the three 3.25 mm screws securing the hexagon-shaped, copper panel to the optical device.
- Gently peel back the main optic ribbon, ensuring it is securely out of the way.
 - ⓘ This ribbon is very fragile, and, if torn, the camera will not function properly. Handle with care.

Step 13



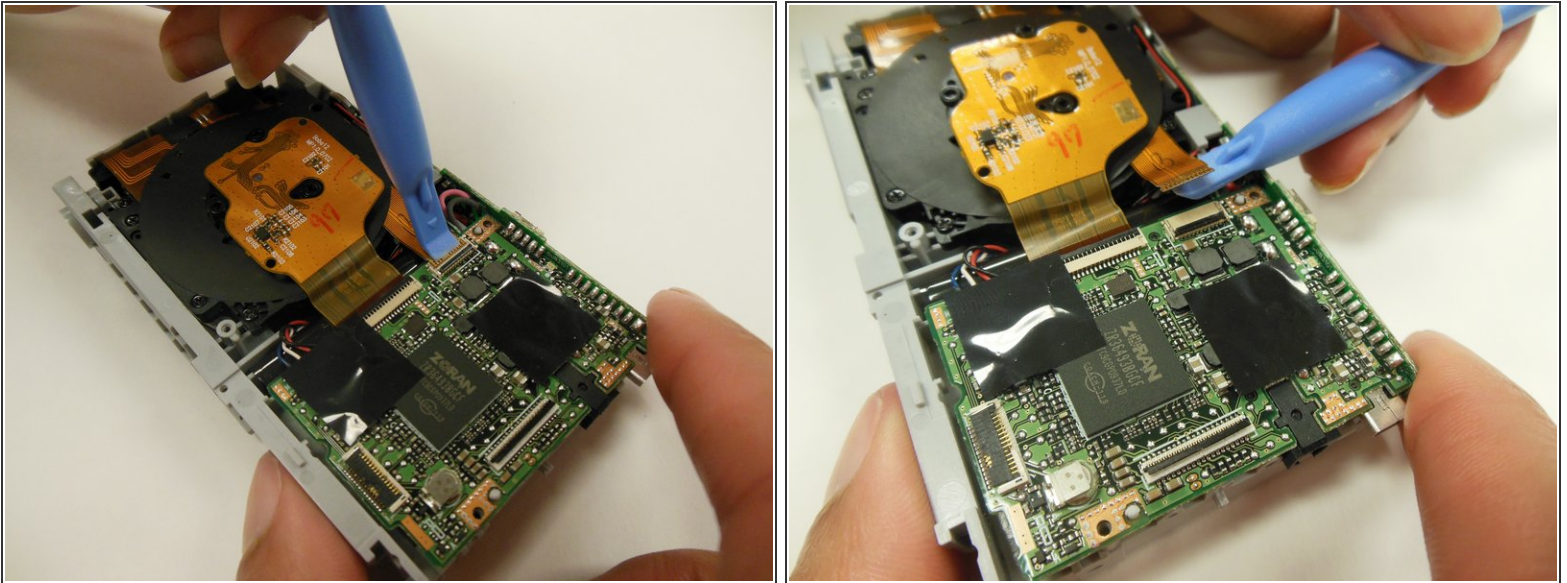
- Remove the six 3.25 mm screws securing the optic lens to the camera frame.

Step 14



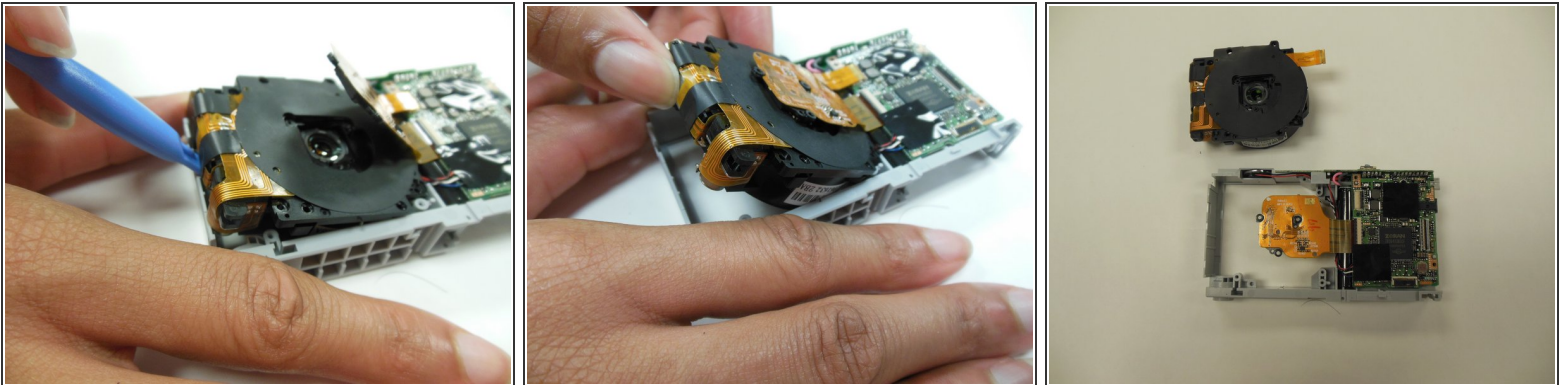
- Carefully remove the square lens film, ensuring you do not bend it. This film will be in two pieces: a black cover, and a glass square piece. It is very fragile, so handle with care.
- i** This film is very fragile. Handle with care.

Step 15




- There is a small ribbon attaching the optical lens piece to the motherboard. Using a plastic opening tool, gently lift up on this ribbon's clamp, detaching it from the motherboard.

Step 16



- The optic assembly should now be free. Use a pry tool to lift it far enough up that you can grab and remove it.

 Be sure the detached ribbons are held out of the way to avoid any possible damage to them.

To reassemble your device, follow these instructions in reverse order.