



Kodak EasyShare Printer Dock (Series 3)

Teardown

This guide will show how to do a tear down of the Kodak EasyShare Printer Dock (Series 3). This will give you access to the inside parts.

Written By: Sarah Allisot





TOOLS:

- [64 Bit Driver Kit](#) (1)
-

Step 1 — Kodak EasyShare Printer Dock (Series 3) Teardown



- Turn the printer face-down so the bottom is showing. Use a PH002 screwdriver to remove the three screws.

Step 2



- Turn the printer so the back-side is showing. Use a PH00 screwdriver to remove the two screws.

Step 3



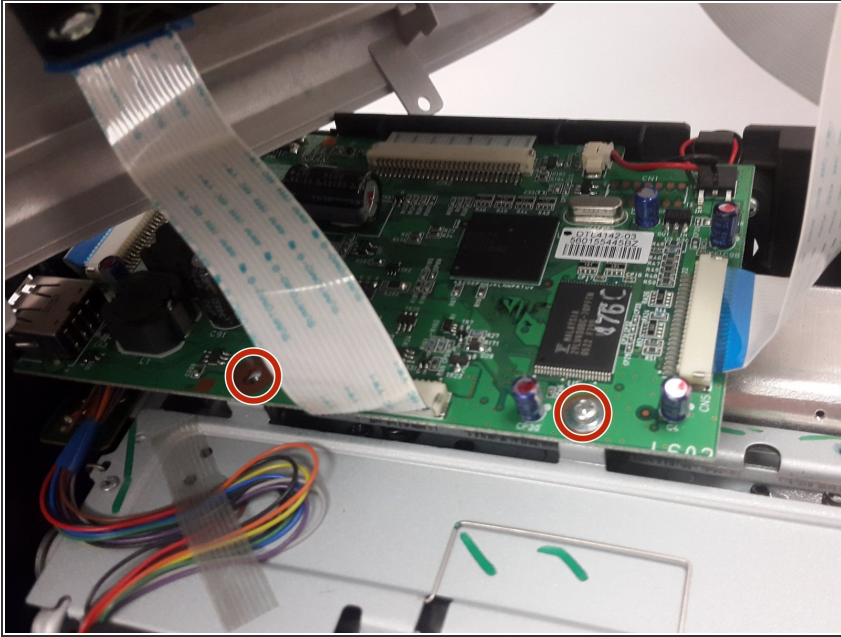
- Slowly lift the top of the printer until the top panel detaches from the base.

Step 4



- Carefully turn the top panel to expose the three screws on the green chip. The ribbons are flexible, but do not twist them excessively.

Step 5



- Use a PH00 screwdriver to remove the two screws on the green chip.