



# Kodak EasyShare Z1275 LCD Replacement

Another good camera with a broken LCD. A replacement LCD is available for around \$18 at numerous places, which is not a bad price for the repair of an important camera piece.

Written By: oldturkey03



## INTRODUCTION

This replacement is a straight forward job. It only requires a few tools, a bit of dexterity, and patience, particularly during the removal of the rear case.



### TOOLS:

- [Phillips #00 Screwdriver](#) (1)
- [iFixit Opening Tools](#) (1)



### PARTS:

- [Replacement LCD](#) (1)

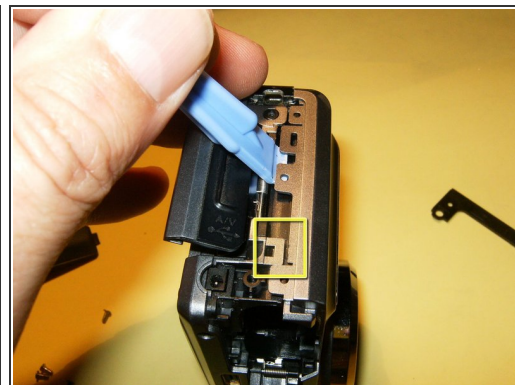
## Step 1 — LCD



- Remove the batteries and the memory card from the camera, if so equipped. The batteries can be located on the bottom of the camera, and the memory card can be located on the left side of the camera.
- Remove the three screws on the bottom of the camera, where the battery hatch is located.
- Remove the two screws on the left side; this is one of two short sides and is the same side of the memory card storage.

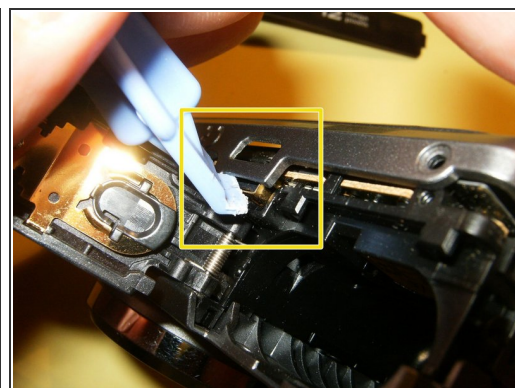
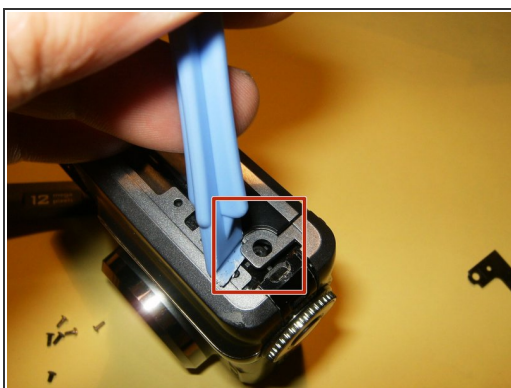


## Step 2



- Remove the screw on the right side, underneath the side cover. The side cover is attached to the camera by one of the screws on the bottom, and the cover should easily slide down to reveal the screw.
- Separate the outer case from the catches on the bottom of the camera with an opening tool. The case clicks into place with a few catches on the bottom and the sides of the camera.
- Separate the case from the catches on the sides of the camera with an opening tool.

## Step 3



- Undo the catch on the top left side of the camera.
- Undo the catch on the bottom left side of the camera.
- Undo the catch on the battery compartment of the camera.



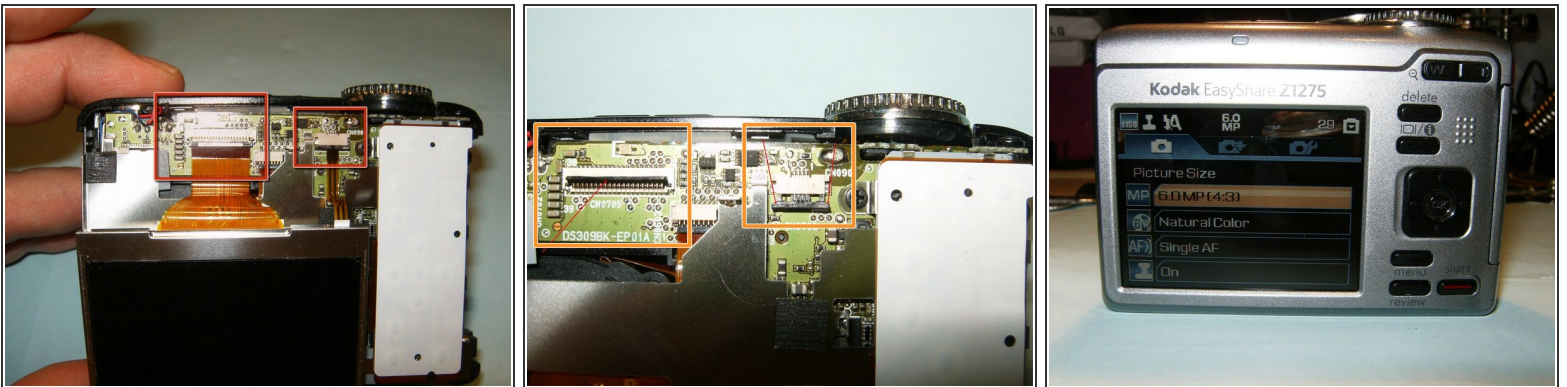
The rear case is snug due to the catches. While using the opening tool, gently pull on the back case so it clears the catches. Do not use too much force, or it may break the plastic of the case.

## Step 4



- Separate the rear case from the camera by wiggling the opening tool. You should have a clear view of the LCD in its frame.
- Lift the LCD out of its frame, but do not fully detach it yet. It is still attached to the camera by two ribbon cables.

## Step 5



- Slide the LCD screen down and out of the frame, so that the two ribbon cables underneath are now visible.
- i The main ribbon cable uses a clip to secure the cable to the connector. The smaller ribbon cable uses a compression clip to secure the cable to the connector.
- Push the compression clip away from the connector with your fingernail or a small tool. Moving the clip a few millimeters will fully detach the LCD from the camera.
- Install the new LCD screen.

To reassemble your device, follow these instructions in reverse order.