



# Kodak Easyshare C813 LCD Replacement

Replace the LCD in your Kodak Easyshare C813.

Written By: Samantha Murray



---

# INTRODUCTION

This guide demonstrates how to install a LCD.

---

## TOOLS:

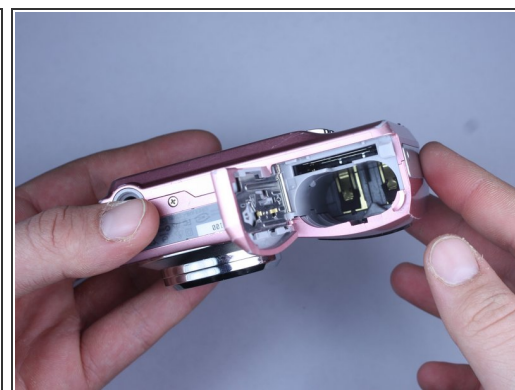
- [Anti-Static Wrist Strap](#) (1)
  - [Desoldering Braid](#) (1)
  - [Phillips #00 Screwdriver](#) (1)
  - [Soldering Workstation](#) (1)
  - [iFixit Opening Tools](#) (1)
-

## Step 1 — Battery



- Turn off camera by firmly pressing the power button that is located on the top of the camera near the selector dial.

## Step 2



- Press thumb firmly on battery door and slide it in the direction of the arrow.
- Lift thumb allowing the door to swing open.

## Step 3 — Back Cover



- Before removing back cover, it is advisable to use an [anti-static wrist strap](#) to prevent damage to electronics.

## Step 4



- Turn the camera off by firmly pressing the power button located on top of the camera.

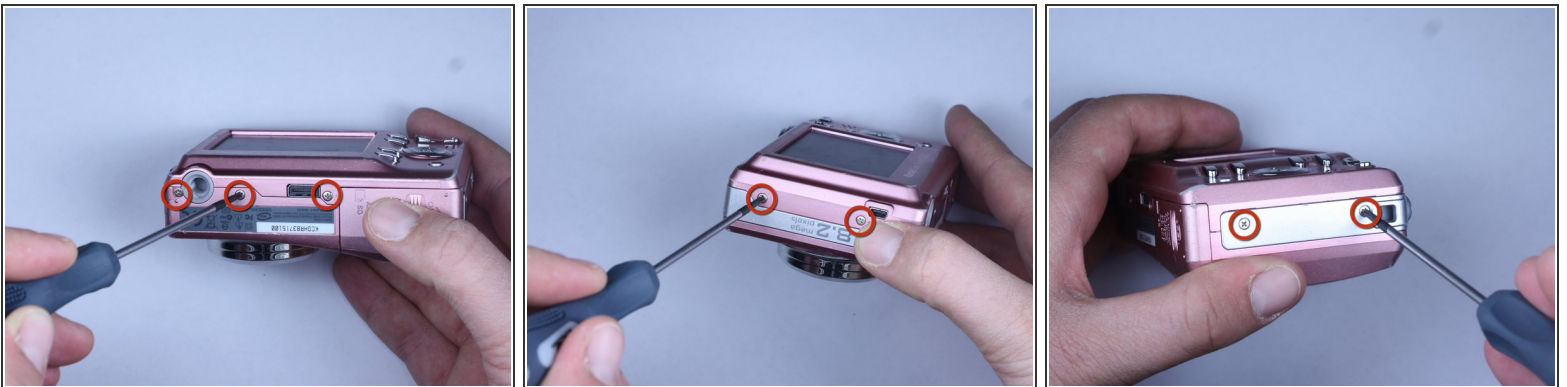


## Step 5



- Locate the 7 screws holding the back cover on.
  - Three screws are located on the bottom of the camera.
  - Two screws are located on the side shown in the photograph.
  - Two final screws are located on the opposite side shown in the photograph.

## Step 6



- Remove all 7 screws:
  - Hold the camera firmly with one hand so that you can still see a screw.
  - Place the Philips 00([Found here](#))screwdriver into the screw.
  - Turn the screwdriver to the left until it is free.
  - Repeat for the remaining screws.

## Step 7



- Use [plastic opening tools](#) to slightly open the side of the case.
- Insert a plastic opening tool and apply pressure to the internal three tabs at the top.
  - The first two are near the words "3X Optical Zoom".
  - The third is near the shutter button.

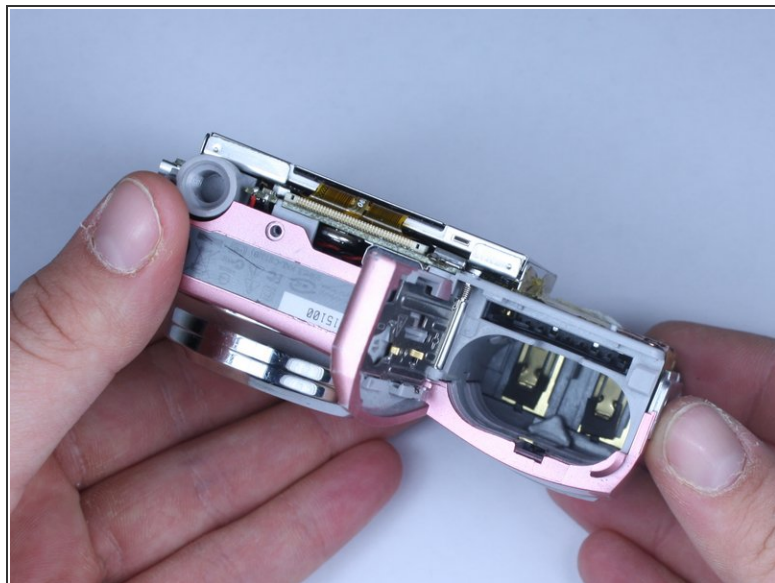
## Step 8



- Gently pull apart the back cover from the rest of the camera.
  - Make sure there are no more screws or tabs keeping the cover on.
  - Use the plastic opening tool to separate any sides still closely connected.

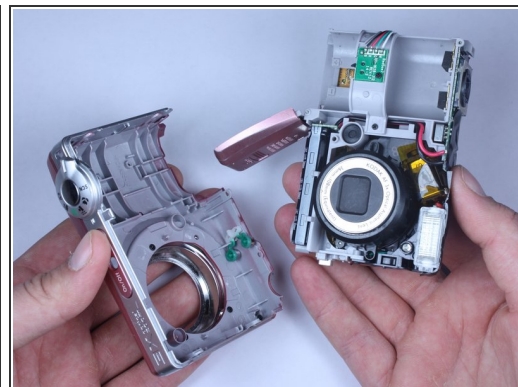
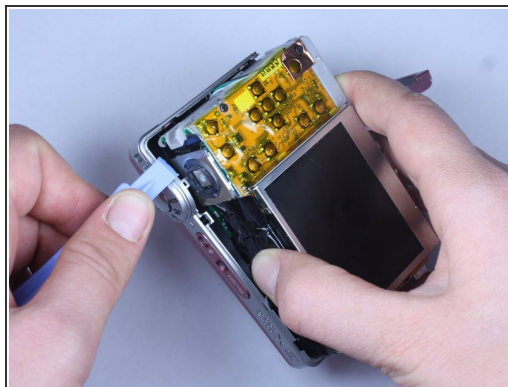


## Step 9 — Front Cover



- Open the battery door.
  - Press thumb firmly on battery door and slide it in the direction of the arrow.
  - Lift thumb allowing the door to swing open.

## Step 10



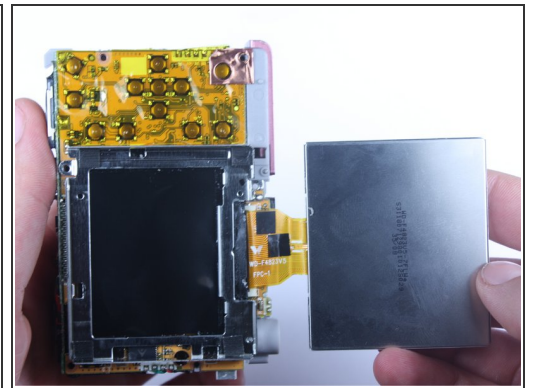
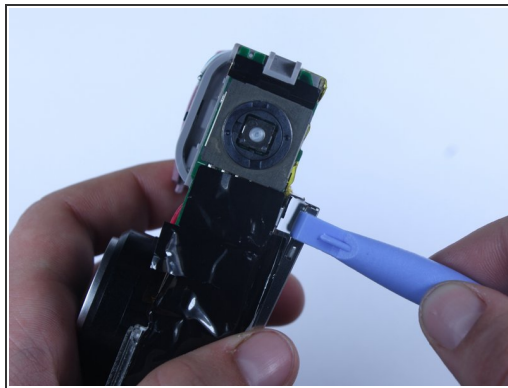
- Use the plastic opening tool to lift the casing around the shutter button.
- Gently remove the front cover from the device.

## Step 11



- ⚠ Do not touch the terminals shown in the photo. These link to the capacitor which could shock you if not discharged.
- To discharge the capacitor follow this [guide](#).

## Step 12 — LCD



- i** Once the front cover is removed, the battery door maybe closed for convenience.
- Locate the exposed portion of the LCD screen.
  - Use a wedge to free the LCD screen from the medal housing.
- ⚠ Do not pull the screen away completely, it is still attached to the logic board via the yellow cable.

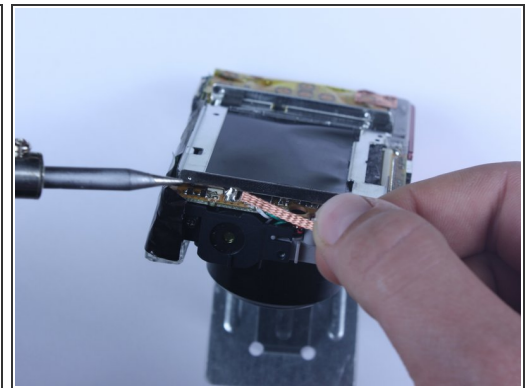
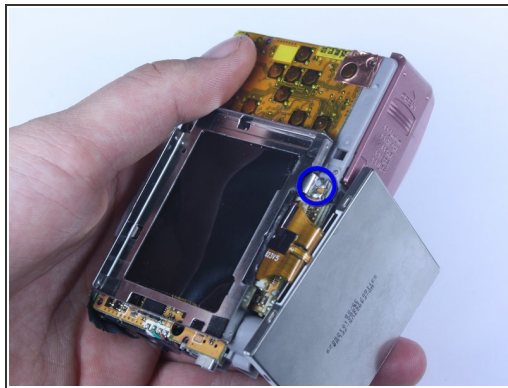
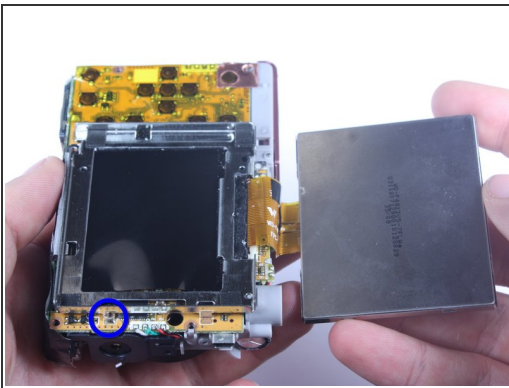


## Step 13



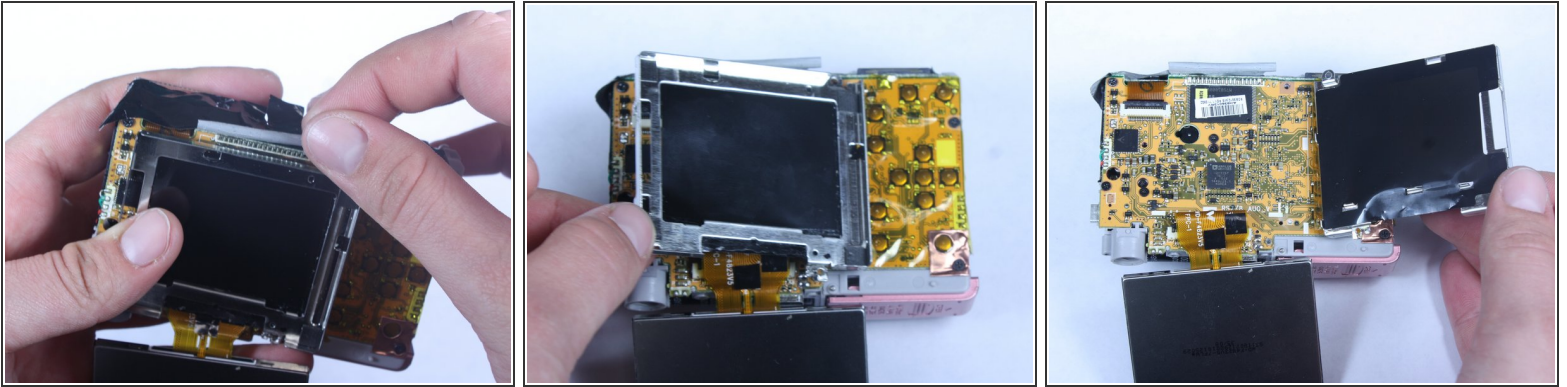
- Remove the screw at the upper right corner of the metal housing.

## Step 14



- Locate the 2 solder joints holding down the metal housing.
- Remove the solder.
  - Place wick on solder.
  - Place solder iron on wick
- ⓘ The wick should be sandwiched between the iron and the solder.

## Step 15



- Peel back the black tape from the metal housing.
- Lift the metal housing from the left so that it hinges on its right side.
- ❗ The metal housing is still loosely attached on its right side.

## Step 16



- Locate black tab holding the LCD screen connector in the port.
- Use wedge or fingernail to lift the black tab.
- Pull the the LCD screen connector out of the port.

To reassemble your device, follow these instructions in reverse order.