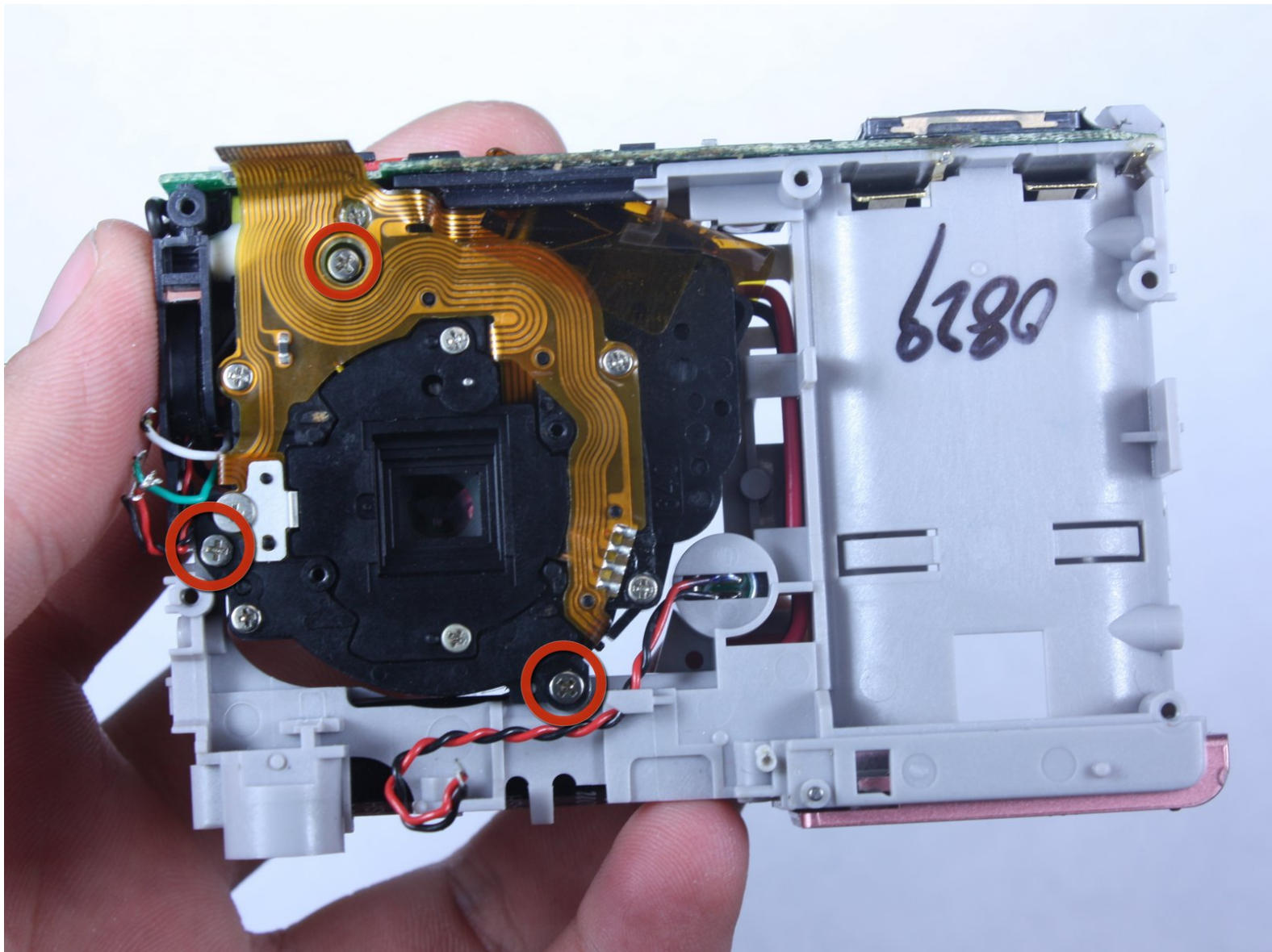




# Kodak Easyshare C813 Lens Replacement

Replace the Lens in your Kodak Easyshare C813.

Written By: Susan Marano



---

# INTRODUCTION

This guide demonstrates how to replace the lens.

---

## TOOLS:

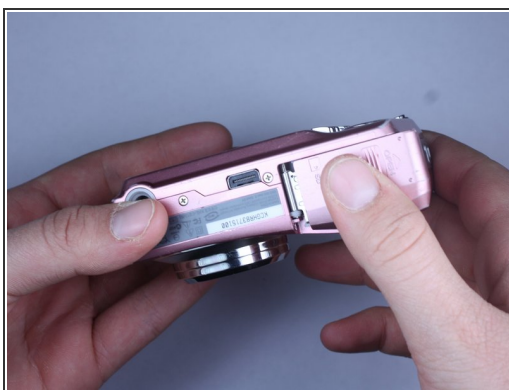
- [Anti-Static Wrist Strap](#) (1)
  - [Desoldering Braid](#) (1)
  - [Phillips #00 Screwdriver](#) (1)
  - [Soldering Workstation](#) (1)
  - [Tweezers](#) (1)
  - [iFixit Opening Tools](#) (1)
-

## Step 1 — Battery



- Turn off camera by firmly pressing the power button that is located on the top of the camera near the selector dial.

## Step 2



- Press thumb firmly on battery door and slide it in the direction of the arrow.
- Lift thumb allowing the door to swing open.

## Step 3 — Back Cover



- Before removing back cover, it is advisable to use an [anti-static wrist strap](#) to prevent damage to electronics.

## Step 4



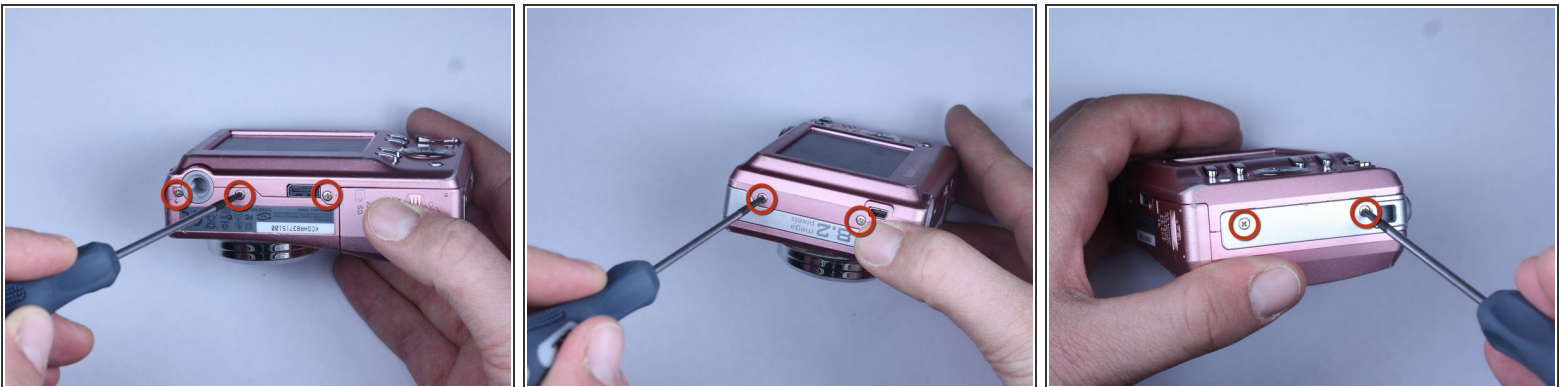
- Turn the camera off by firmly pressing the power button located on top of the camera.

## Step 5



- Locate the 7 screws holding the back cover on.
  - Three screws are located on the bottom of the camera.
  - Two screws are located on the side shown in the photograph.
  - Two final screws are located on the opposite side shown in the photograph.

## Step 6



- Remove all 7 screws:
  - Hold the camera firmly with one hand so that you can still see a screw.
  - Place the Philips 00([Found here](#))screwdriver into the screw.
  - Turn the screwdriver to the left until it is free.
  - Repeat for the remaining screws.

## Step 7



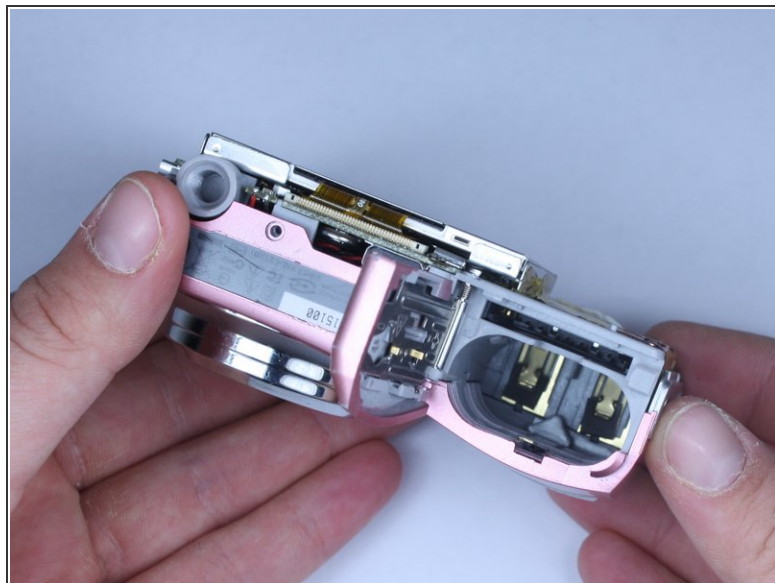
- Use [plastic opening tools](#) to slightly open the side of the case.
- Insert a plastic opening tool and apply pressure to the internal three tabs at the top.
  - The first two are near the words "3X Optical Zoom".
  - The third is near the shutter button.

## Step 8



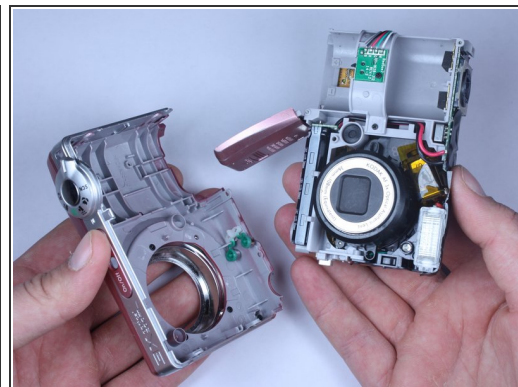
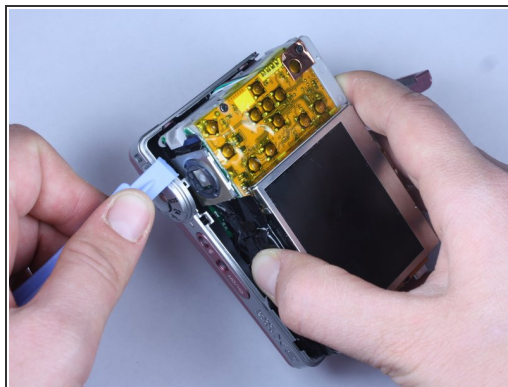
- Gently pull apart the back cover from the rest of the camera.
  - Make sure there are no more screws or tabs keeping the cover on.
  - Use the plastic opening tool to separate any sides still closely connected.

## Step 9 — Front Cover



- Open the battery door.
  - Press thumb firmly on battery door and slide it in the direction of the arrow.
  - Lift thumb allowing the door to swing open.

## Step 10



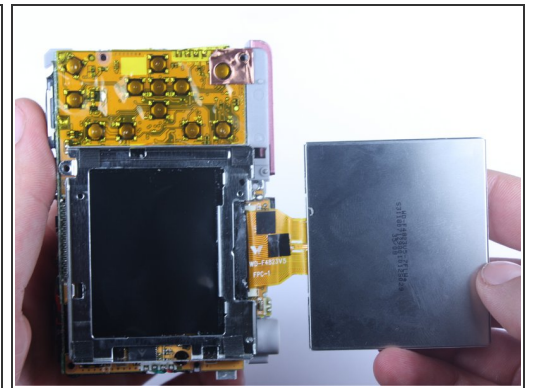
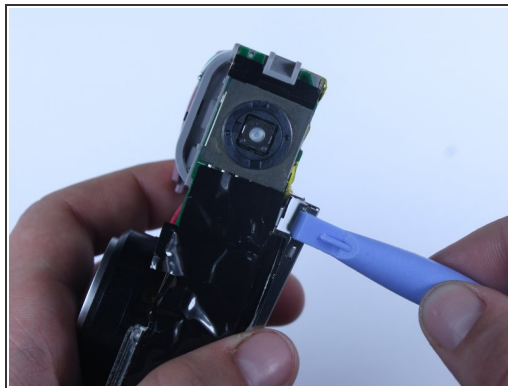
- Use the plastic opening tool to lift the casing around the shutter button.
- Gently remove the front cover from the device.

## Step 11



- ⚠ Do not touch the terminals shown in the photo. These link to the capacitor which could shock you if not discharged.
- To discharge the capacitor follow this [guide](#).

## Step 12 — LCD



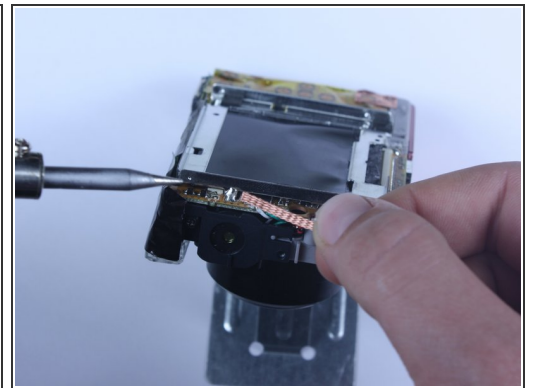
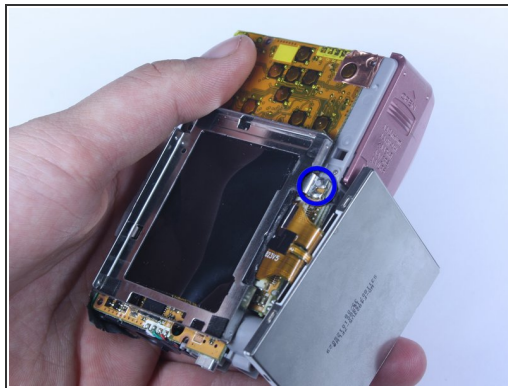
- ⓘ Once the front cover is removed, the battery door maybe closed for convenience.
- Locate the exposed portion of the LCD screen.
- Use a wedge to free the LCD screen from the metal housing.
- ⚠ Do not pull the screen away completely, it is still attached to the logic board via the yellow cable.

## Step 13



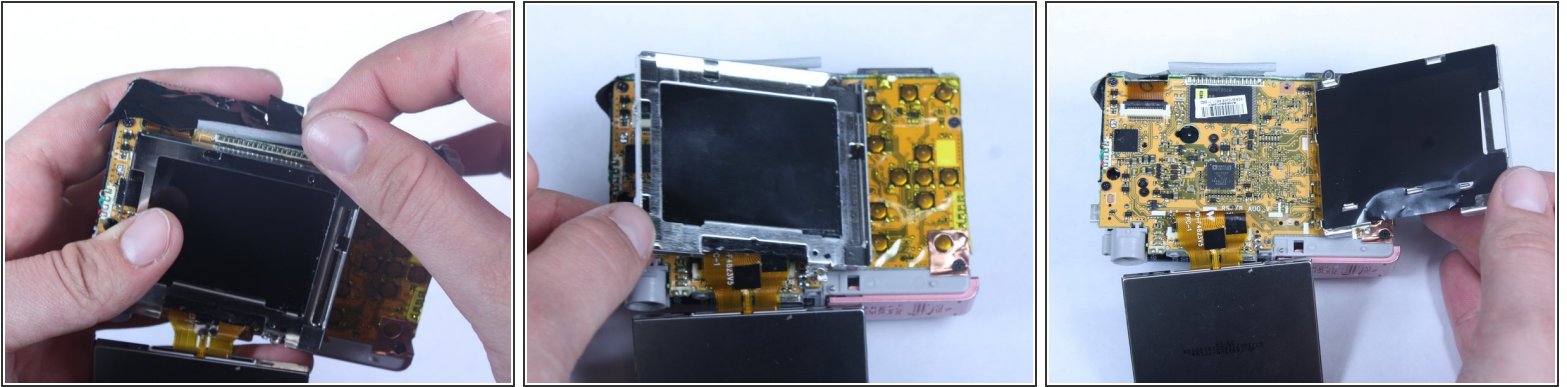
- Remove the screw at the upper right corner of the metal housing.

## Step 14



- Locate the 2 solder joints holding down the metal housing.
- Remove the solder.
  - Place wick on solder.
  - Place solder iron on wick
- ⓘ The wick should be sandwiched between the iron and the solder.

## Step 15



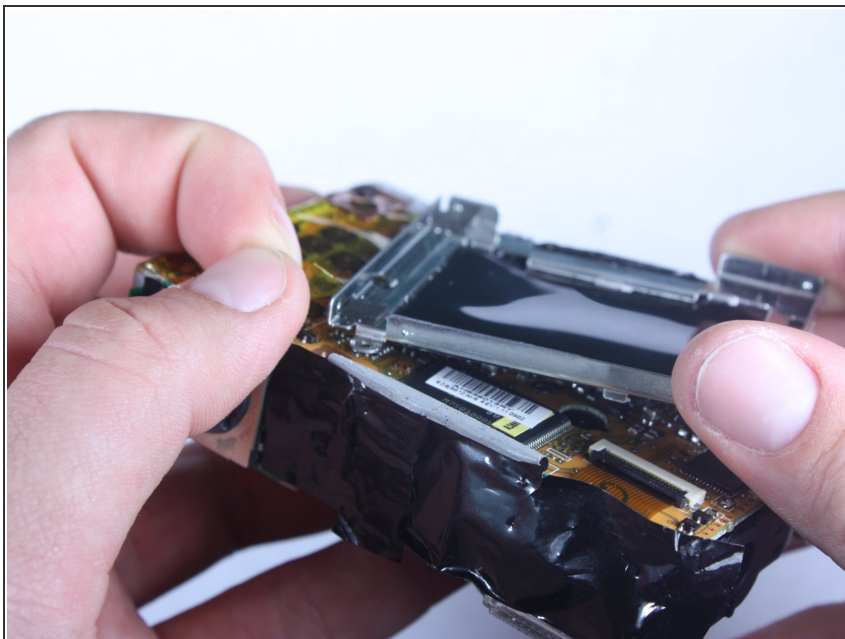
- Peel back the black tape from the metal housing.
- Lift the metal housing from the left so that it hinges on its right side.
  - ❗ The metal housing is still loosely attached on its right side.

## Step 16



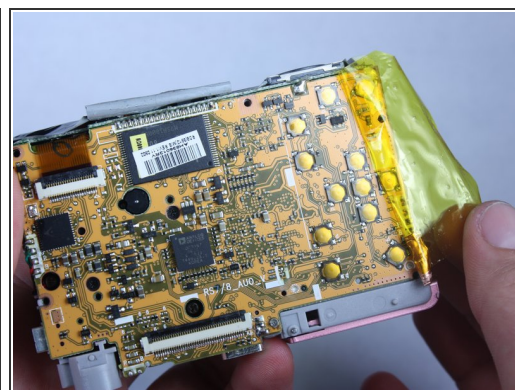
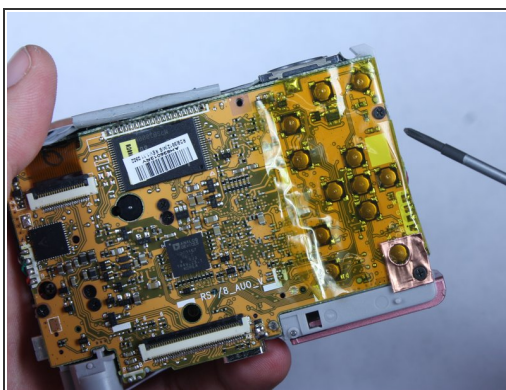
- Locate black tab holding the LCD screen connector in the port.
- Use wedge or fingernail to lift the black tab.
- Pull the the LCD screen connector out of the port.

## Step 17 — Logic Board



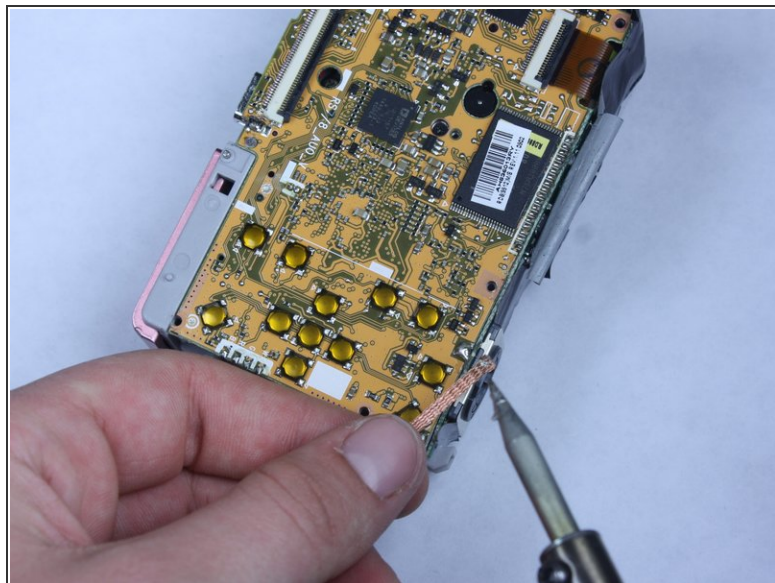
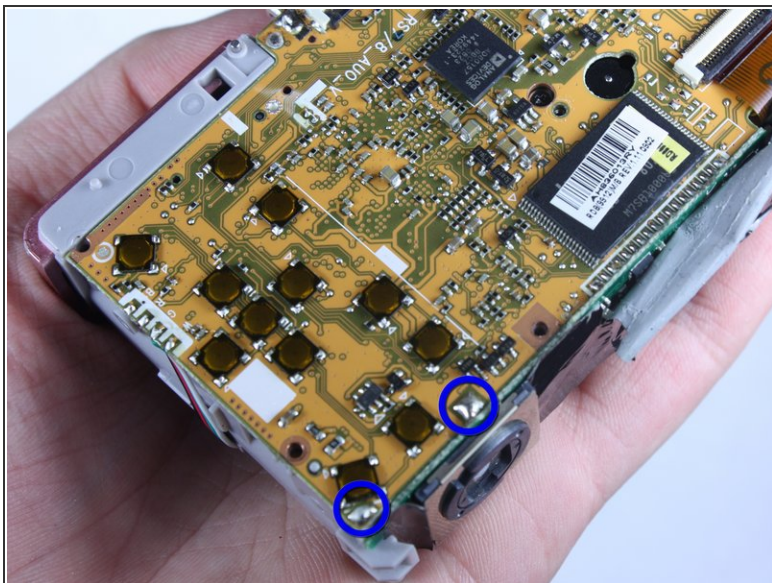
- Remove the metal housing from the logic board by carefully peeling the yellow tape off of the metal housing.

## Step 18



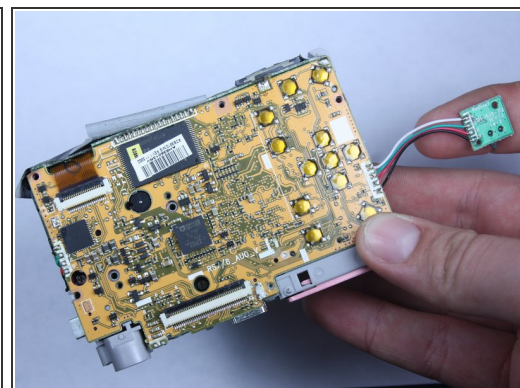
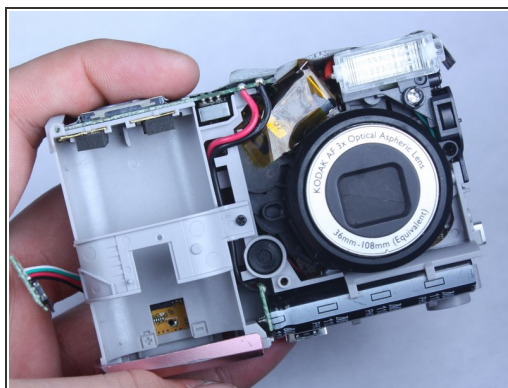
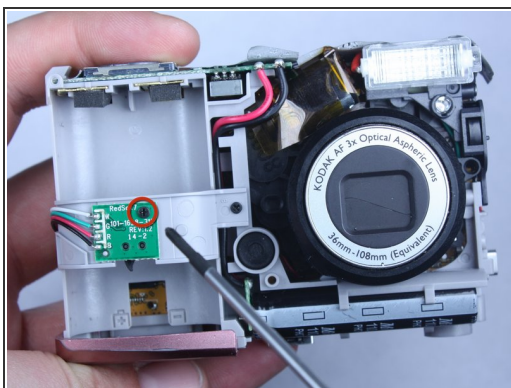
- Locate the 2 screws on the yellow tape.
- Remove the 2 screws.
- Remove the yellow tape.

## Step 19



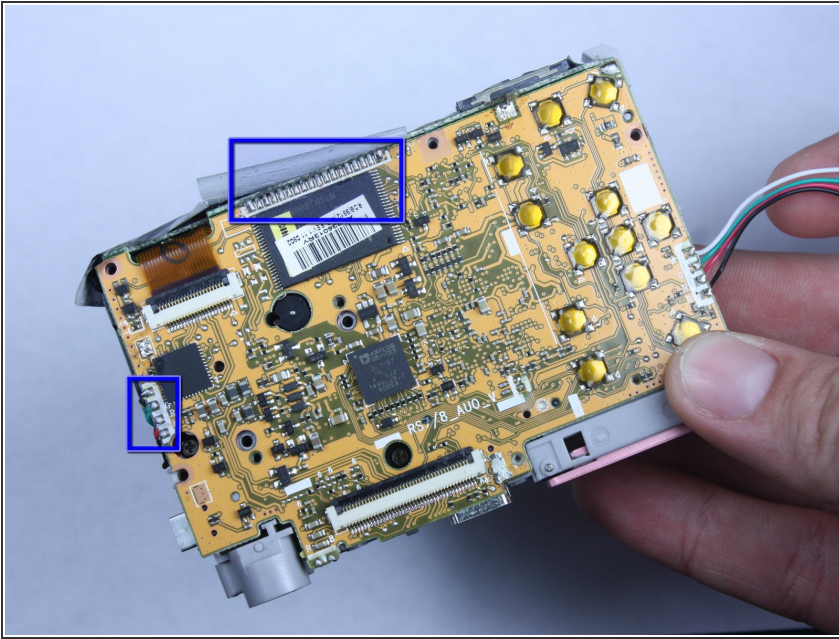
- Locate the 2 solder joints near the shutter button.
- Remove the solder on both joints with the wick and soldering iron in the same manner as Step 11.

## Step 20



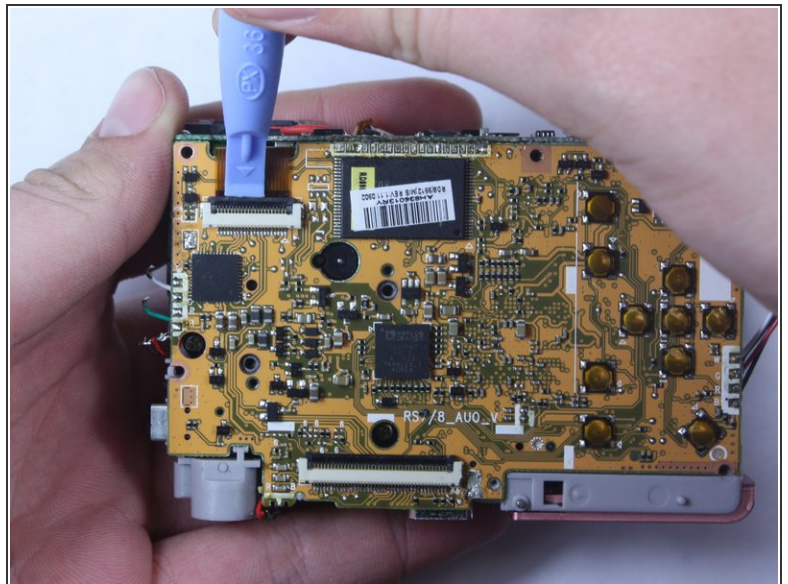
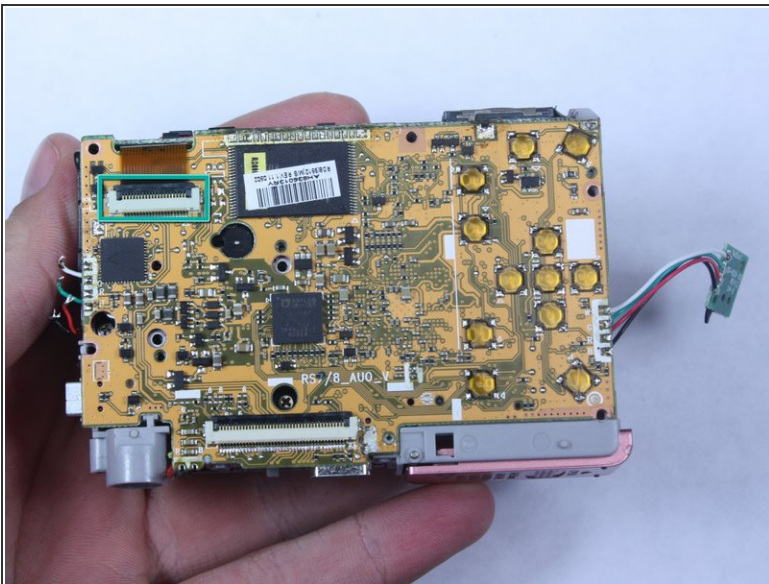
- Turn the camera over.
  - Remove the screw holding the small green board.
  - Lift the small green board.
- ⚠ The small green board is still attached to the logic board via wires.

## Step 21



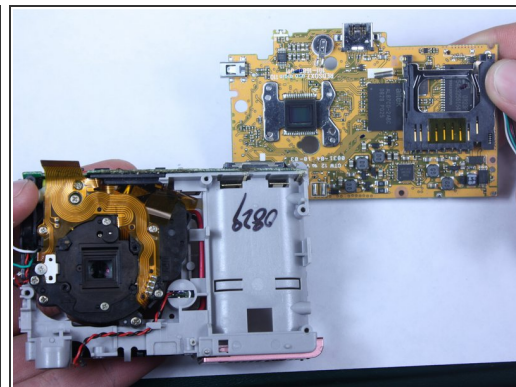
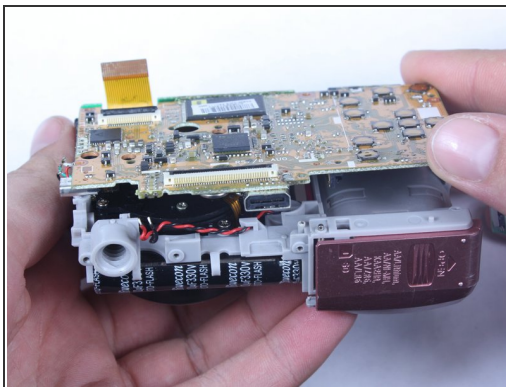
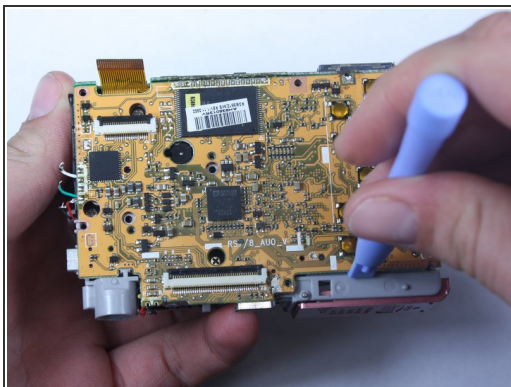
- Desolder the remaining 20 solder joints connecting the logic board to the camera.

## Step 22



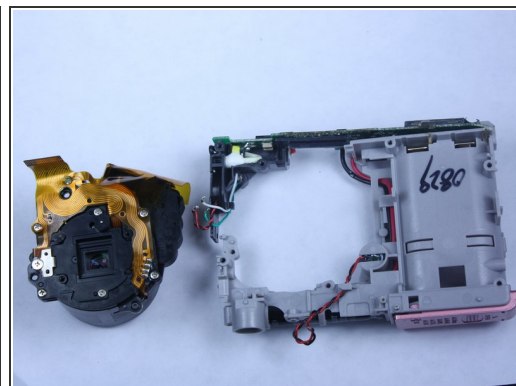
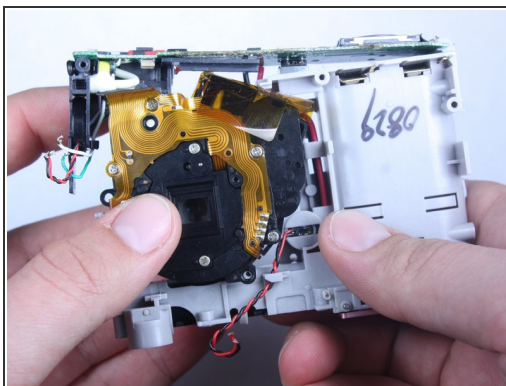
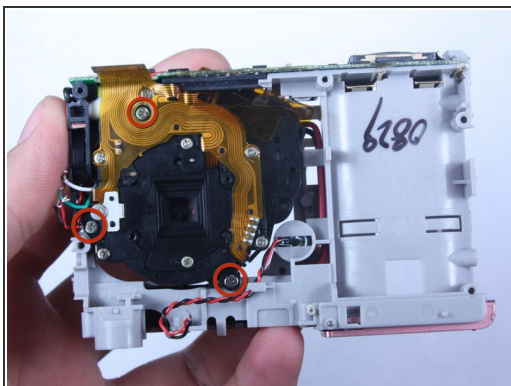
- Locate the black tab holding the yellow cable in place.
- Use a plastic opening tool or fingernail to lift the black tab.
- Pull the yellow cable from the port.

## Step 23



- Use a plastic opening tool to lift the board from the camera.
- Continue to remove the board completely.

## Step 24 — Lens



- Remove the 3 screws securing the lens to the camera.
- Gently remove the lens from the remaining casing.

To reassemble your device, follow these instructions in reverse order.