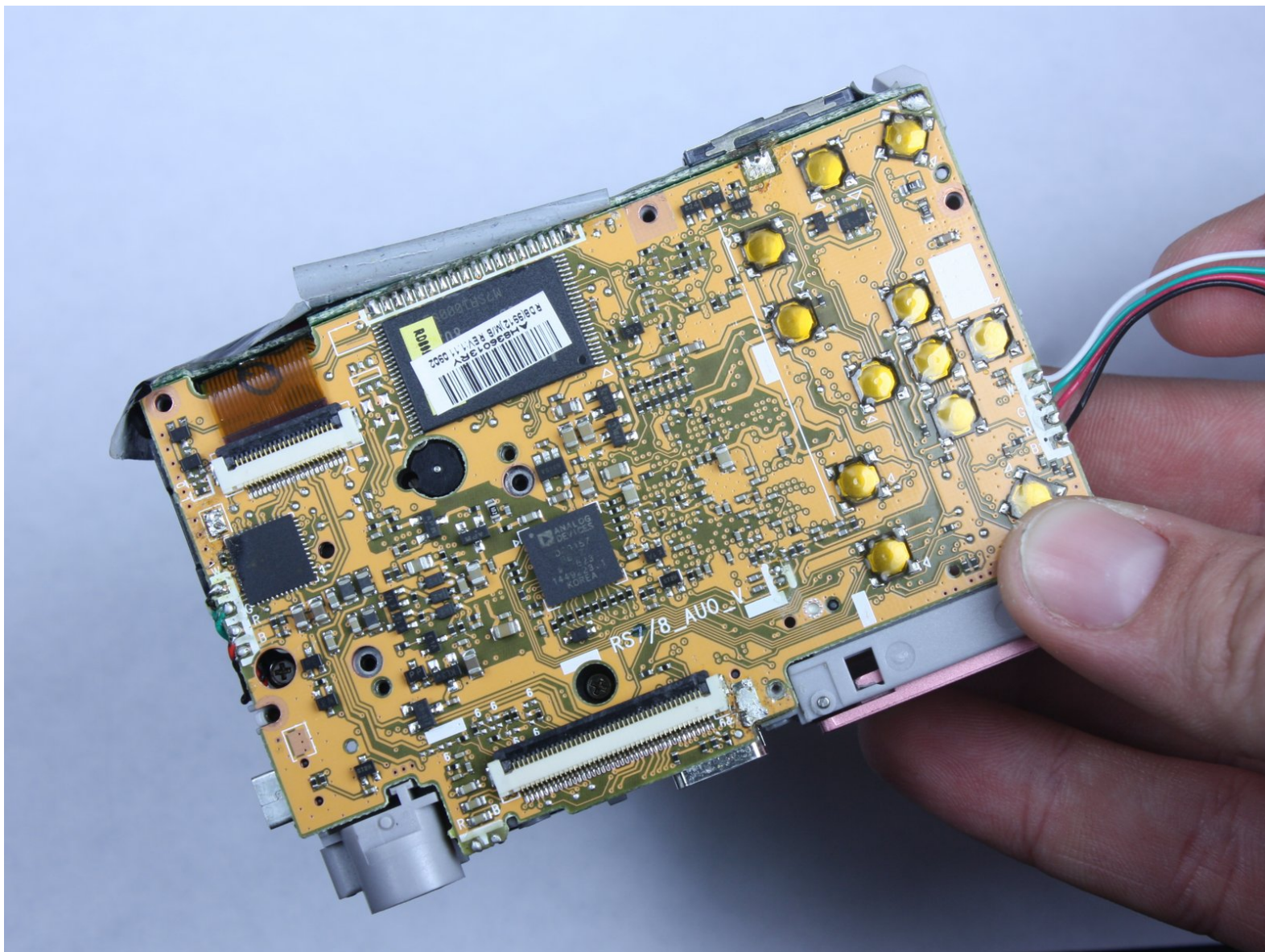




Kodak Easyshare C813 Logic Board Replacement

Replace the Logic Board in your Kodak Easyshare C81.3

Written By: Susan Marano



INTRODUCTION

This guide demonstrates how to replace the camera's logic board.



TOOLS:

- [Anti-Static Wrist Strap](#) (1)
 - [Desoldering Braid](#) (1)
 - [Phillips #00 Screwdriver](#) (1)
 - [Soldering Workstation](#) (1)
 - [iFixit Opening Tools](#) (1)
-

Step 1 — Battery



- Turn off camera by firmly pressing the power button that is located on the top of the camera near the selector dial.

Step 2



- Press thumb firmly on battery door and slide it in the direction of the arrow.
- Lift thumb allowing the door to swing open.

Step 3 — Back Cover



- Before removing back cover, it is advisable to use an [anti-static wrist strap](#) to prevent damage to electronics.

Step 4



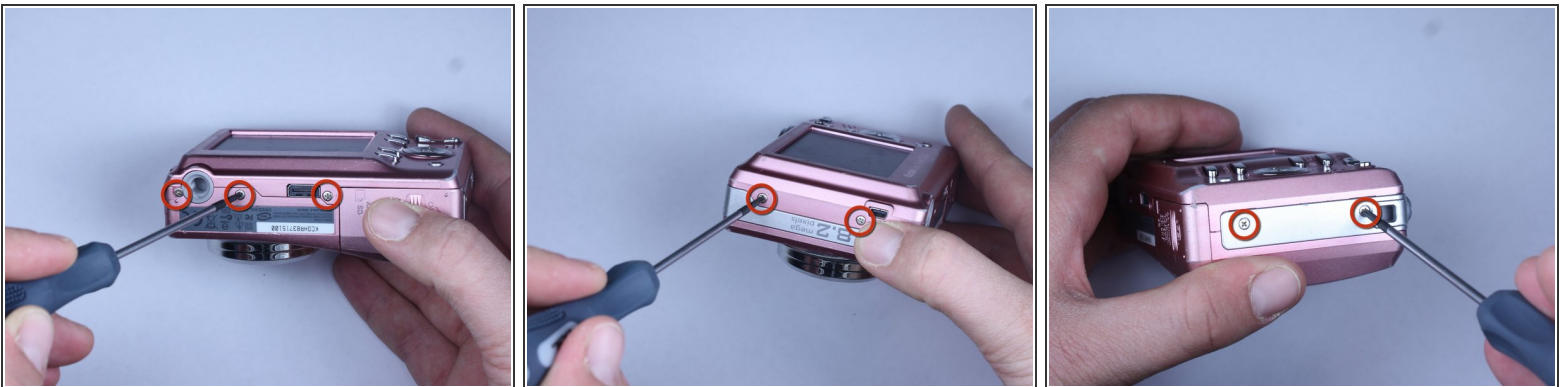
- Turn the camera off by firmly pressing the power button located on top of the camera.

Step 5



- Locate the 7 screws holding the back cover on.
 - Three screws are located on the bottom of the camera.
 - Two screws are located on the side shown in the photograph.
 - Two final screws are located on the opposite side shown in the photograph.

Step 6



- Remove all 7 screws:
 - Hold the camera firmly with one hand so that you can still see a screw.
 - Place the Philips 00([Found here](#))screwdriver into the screw.
 - Turn the screwdriver to the left until it is free.
 - Repeat for the remaining screws.

Step 7



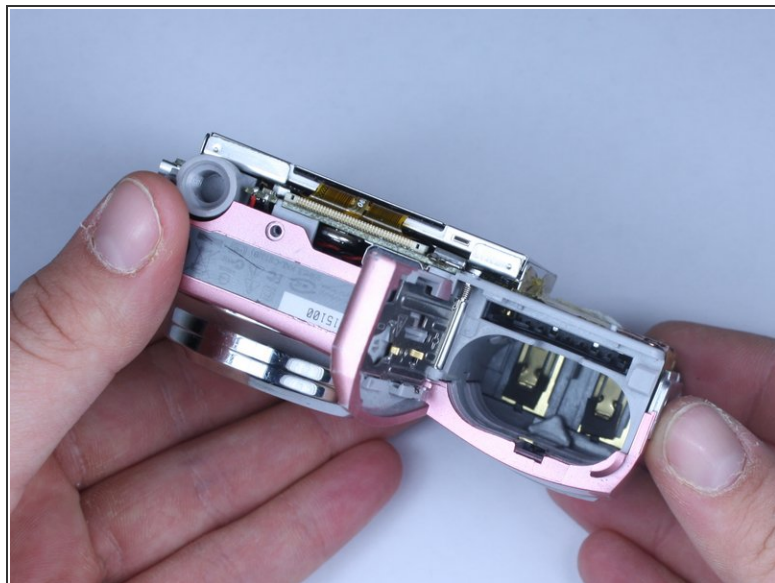
- Use [plastic opening tools](#) to slightly open the side of the case.
- Insert a plastic opening tool and apply pressure to the internal three tabs at the top.
 - The first two are near the words "3X Optical Zoom".
 - The third is near the shutter button.

Step 8



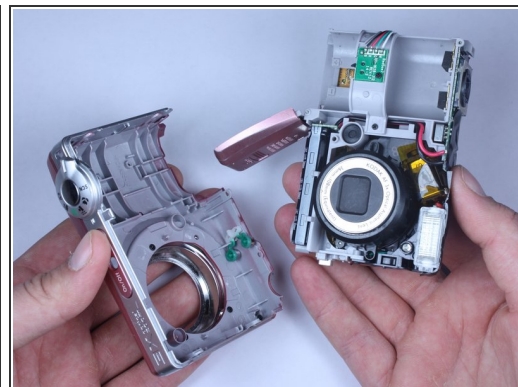
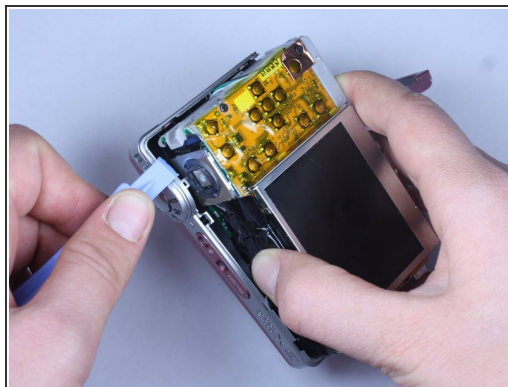
- Gently pull apart the back cover from the rest of the camera.
 - Make sure there are no more screws or tabs keeping the cover on.
 - Use the plastic opening tool to separate any sides still closely connected.

Step 9 — Front Cover



- Open the battery door.
 - Press thumb firmly on battery door and slide it in the direction of the arrow.
 - Lift thumb allowing the door to swing open.

Step 10



- Use the plastic opening tool to lift the casing around the shutter button.
- Gently remove the front cover from the device.

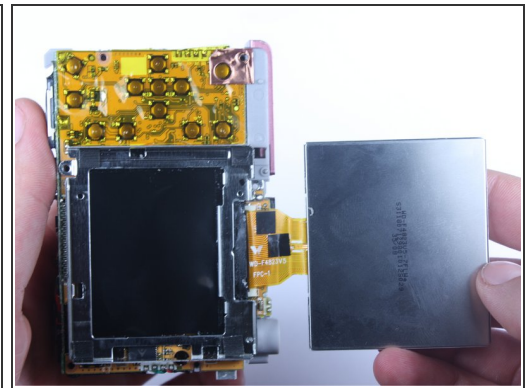
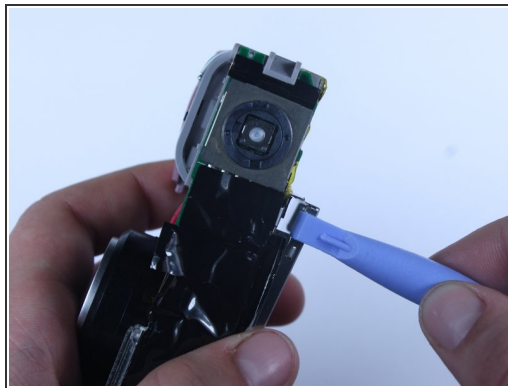
Step 11



⚠ Do not touch the terminals shown in the photo. These link to the capacitor which could shock you if not discharged.

- To discharge the capacitor follow this [guide](#).

Step 12 — LCD



i Once the front cover is removed, the battery door maybe closed for convenience.

- Locate the exposed portion of the LCD screen.
- Use a wedge to free the LCD screen from the metal housing.

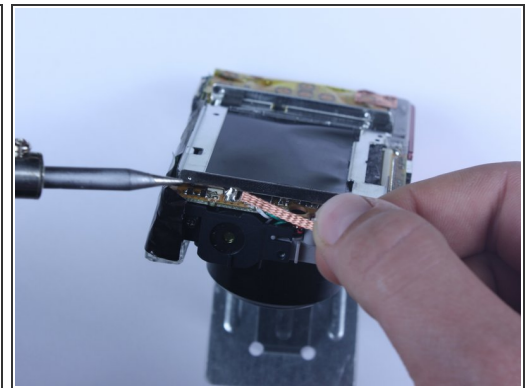
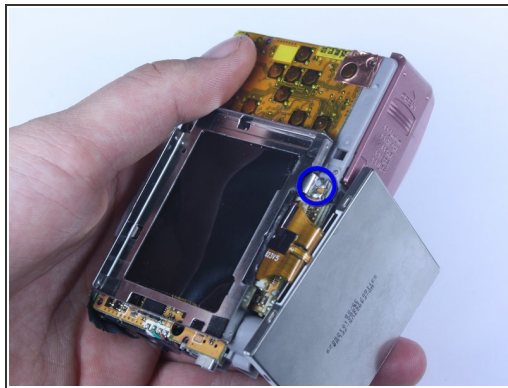
⚠ Do not pull the screen away completely, it is still attached to the logic board via the yellow cable.

Step 13



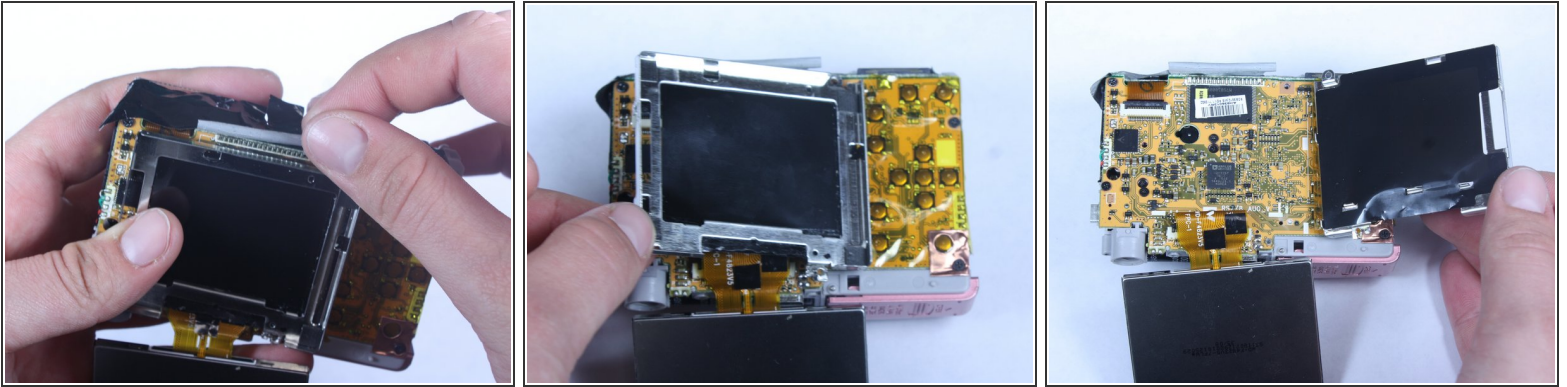
- Remove the screw at the upper right corner of the metal housing.

Step 14



- Locate the 2 solder joints holding down the metal housing.
- Remove the solder.
 - Place wick on solder.
 - Place solder iron on wick
- ⓘ The wick should be sandwiched between the iron and the solder.

Step 15



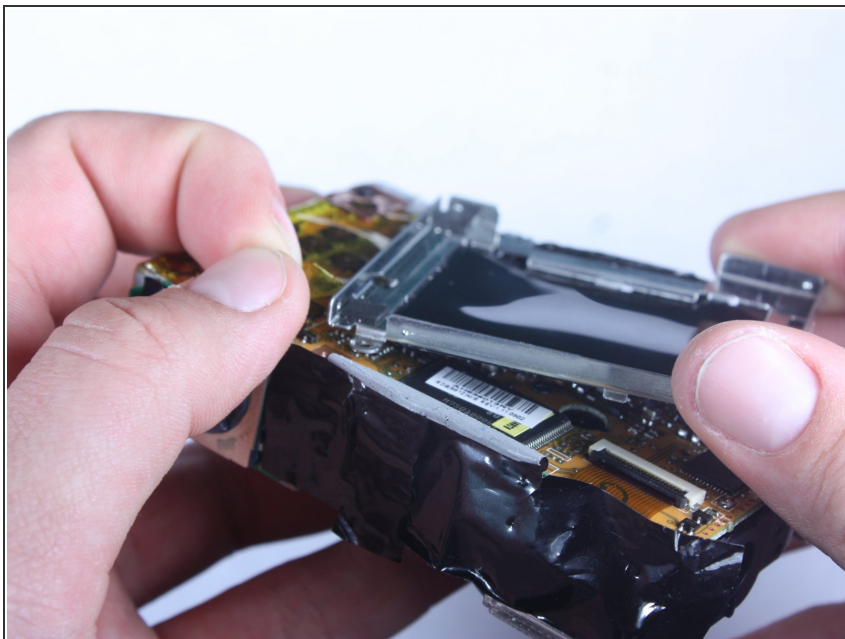
- Peel back the black tape from the metal housing.
- Lift the metal housing from the left so that it hinges on its right side.
 - ❗ The metal housing is still loosely attached on its right side.

Step 16



- Locate black tab holding the LCD screen connector in the port.
- Use wedge or fingernail to lift the black tab.
- Pull the the LCD screen connector out of the port.

Step 17 — Logic Board



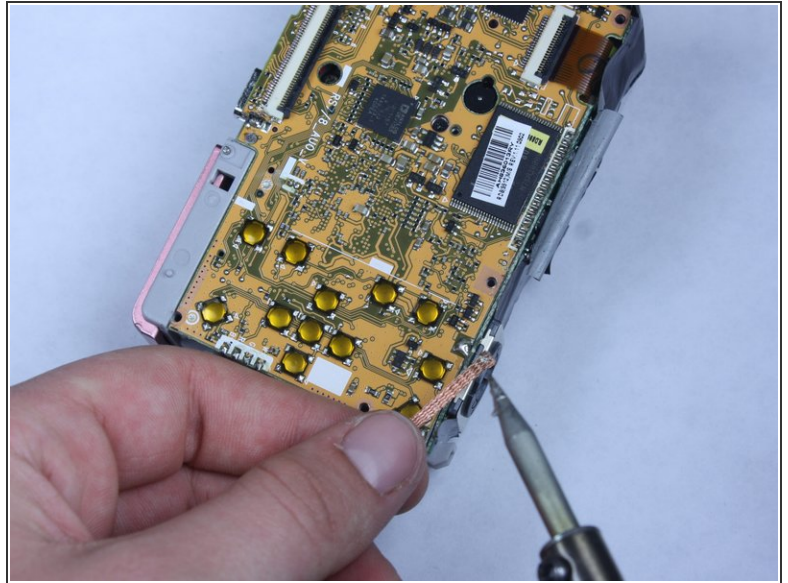
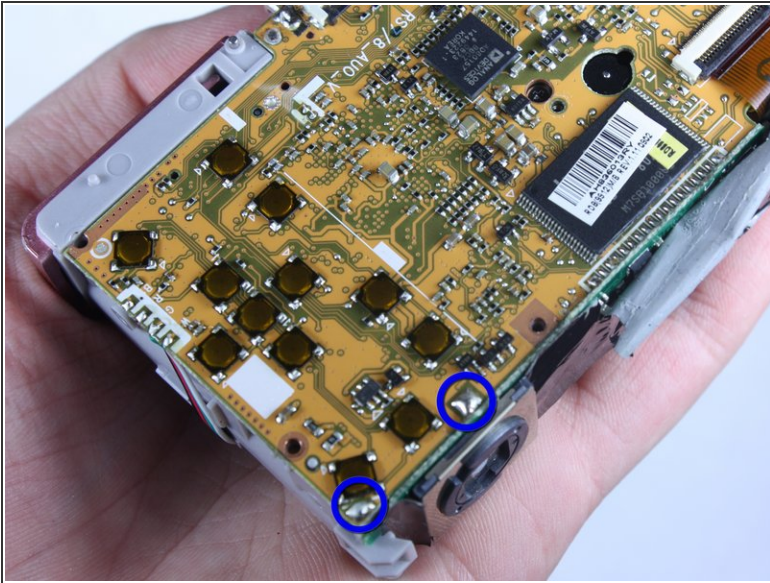
- Remove the metal housing from the logic board by carefully peeling the yellow tape off of the metal housing.

Step 18



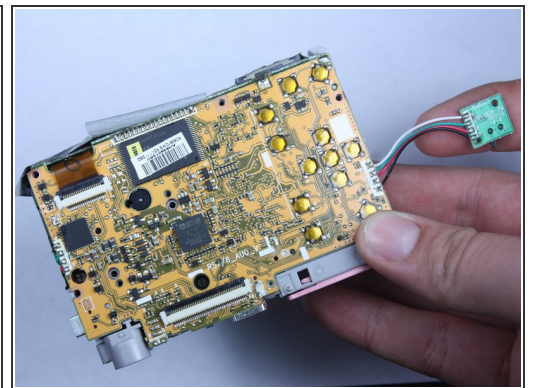
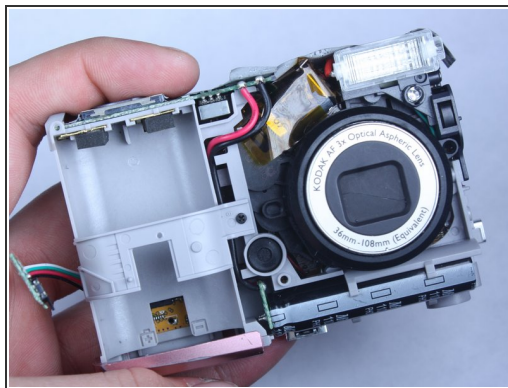
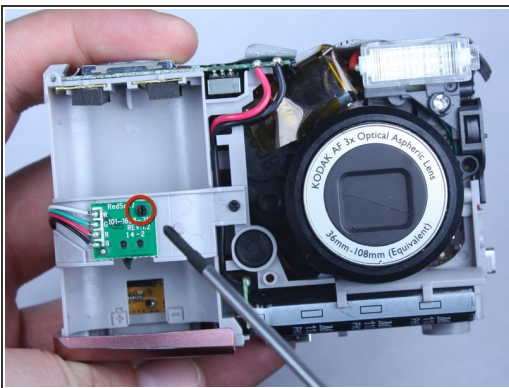
- Locate the 2 screws on the yellow tape.
- Remove the 2 screws.
- Remove the yellow tape.

Step 19



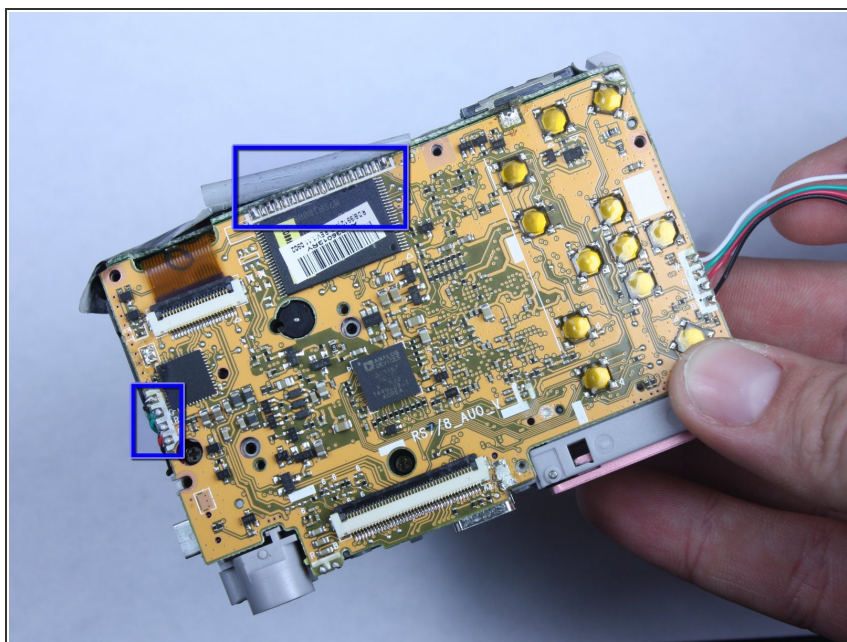
- Locate the 2 solder joints near the shutter button.
- Remove the solder on both joints with the wick and soldering iron in the same manner as Step 11.

Step 20



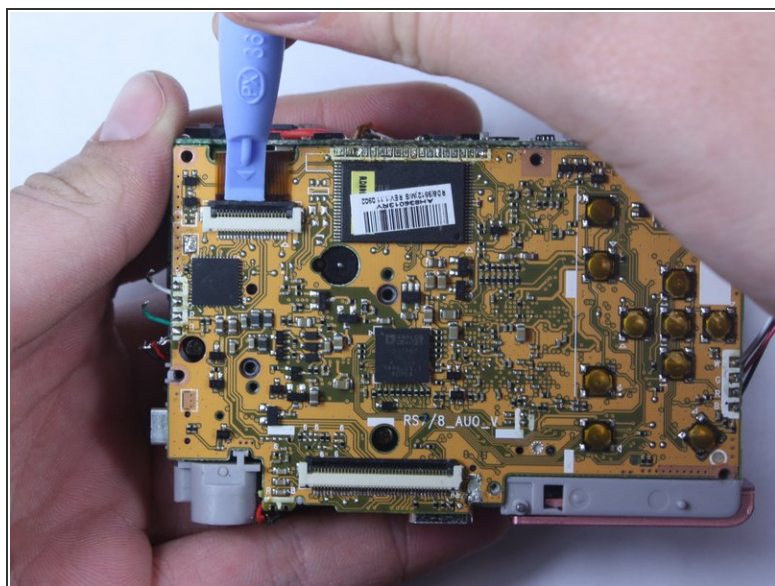
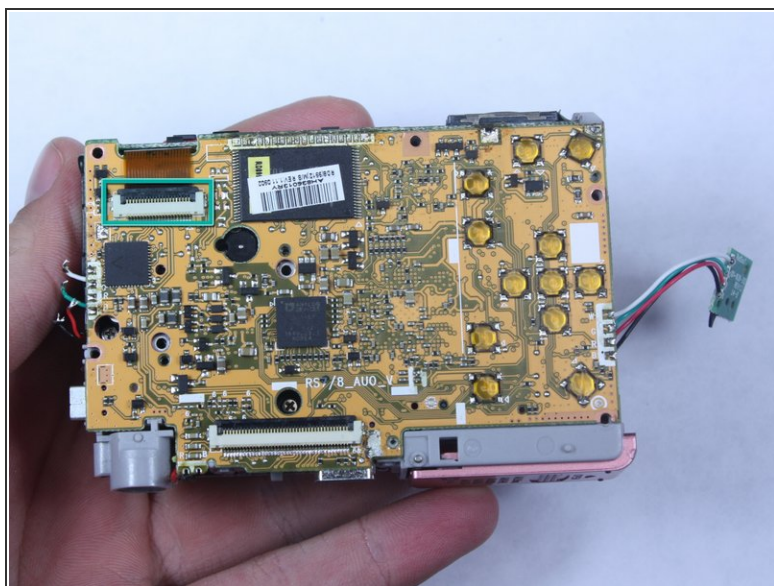
- Turn the camera over.
 - Remove the screw holding the small green board.
 - Lift the small green board.
- ⚠ The small green board is still attached to the logic board via wires.

Step 21



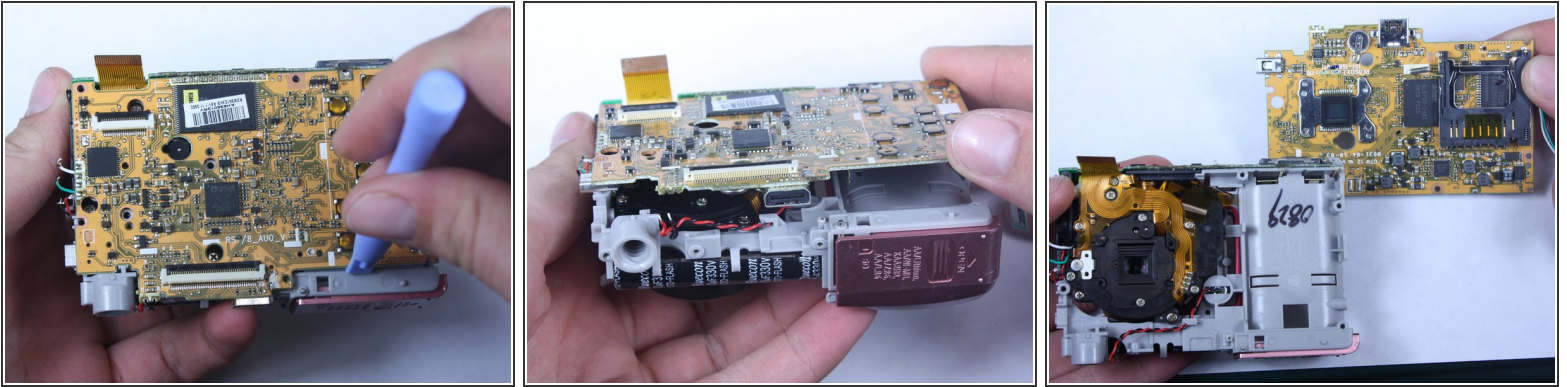
- Desolder the remaining 20 solder joints connecting the logic board to the camera.

Step 22



- Locate the black tab holding the yellow cable in place.
- Use a plastic opening tool or fingernail to lift the black tab.
- Pull the yellow cable from the port.

Step 23



- Use a plastic opening tool to lift the board from the camera.
- Continue to remove the board completely.

To reassemble your device, follow these instructions in reverse order.