



Kodak Easyshare C813 Memory Card Replacement

Written By: Samantha Murray



INTRODUCTION

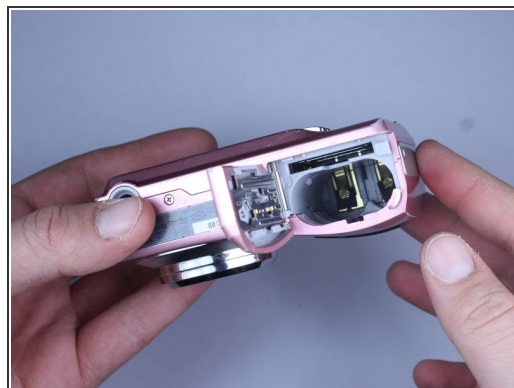
This guide demonstrates how to install a memory card.

Step 1 — Memory Card



- Turn off camera by firmly pressing the power button that is located on the top of the camera near the mode selector dial.

Step 2



- Locate battery compartment on bottom of camera and slide open by applying pressure in the direction of the arrow.

Step 3



- Locate memory card slot and insert memory card by inserting the gold terminals first.
- Apply pressure into you feel it lock into place.
- Note: To remove a memory card, apply pressure down until you feel it click. Then it should pop up and you can just pull it up.

Step 4



- Return the battery door to its formerly closed position.

Step 5



- Turn on camera.
- If you encounter a problem refer to your memory card, reference: [Camera Memory Problems](#)

To reassemble your device, follow these instructions in reverse order.