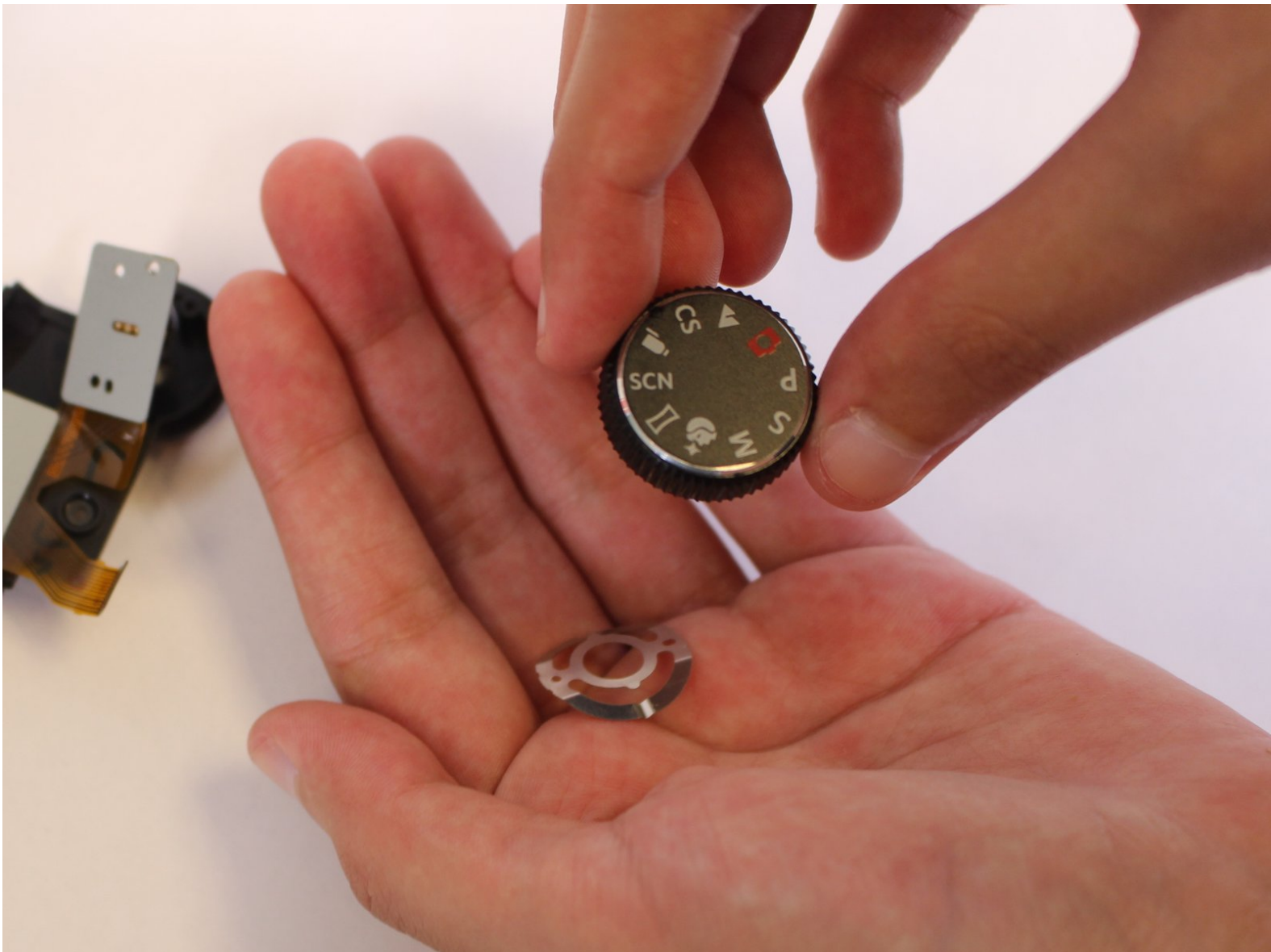




Kodak PixPro AZ251 Mode Dial Replacement

Learn how to repair and replace a faulty Mode Dial for your Kodak PixPro AZ251.

Written By: Rachel Llewellyn



INTRODUCTION

In this guide, you will learn how to repair and replace a faulty Mode Dial for your Kodak PixPro AZ251. This may be necessary if the camera mode does not change upon turning the Mode Dial, or if the Mode Dial is loose.



TOOLS:

- [JIS #000 Screwdriver](#) (1)
 - [JIS #00 Screwdriver](#) (1)
 - [Phillips #00 Screwdriver](#) (1)
 - [iFixit Opening Tools](#) (1)
 - [Tweezers](#) (1)
-

Step 1 — Batteries



- Slide switch to open lock position.

Step 2



- Press down on the battery cover and slide outwards to open.

Step 3



- Remove the batteries.

Step 4 — Back Cover



- Remove a total of four 5mm JIS #000 screws from around the camera:
 - Two screws from the right side.
 - Two screws from the left side.

Step 5



- Remove the single 5mm Phillips #00 screw from the bottom.

Step 6



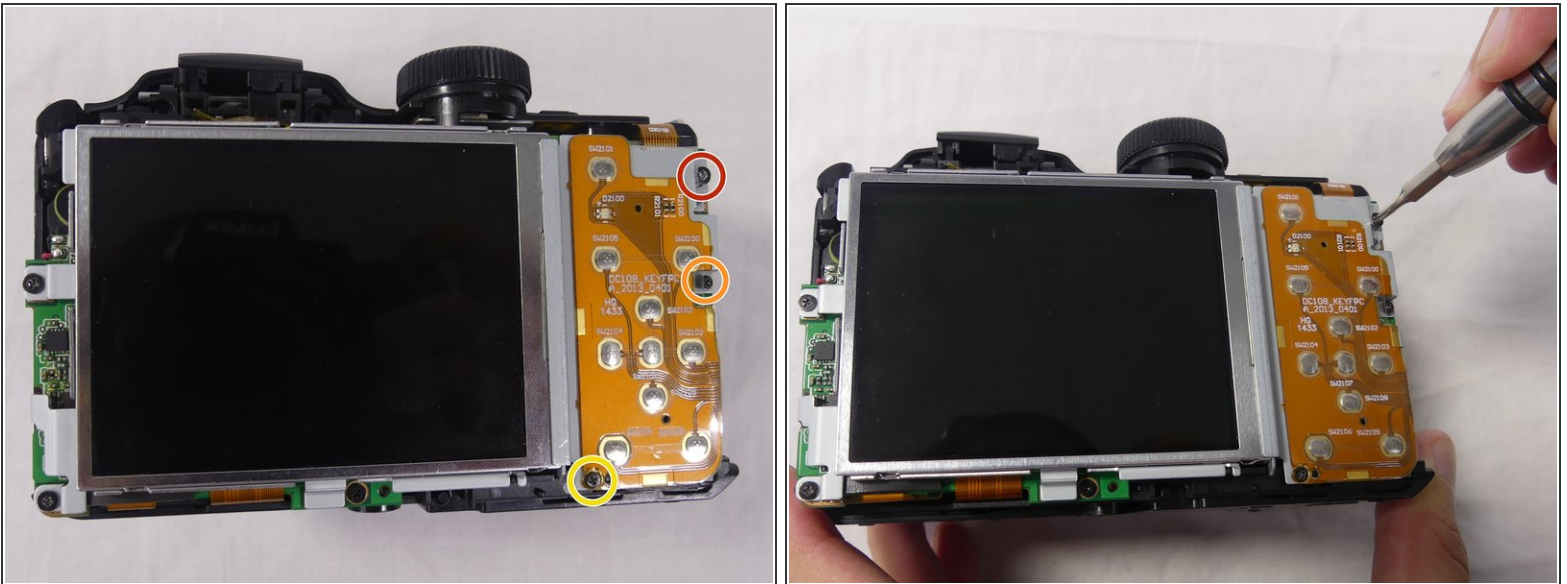
- Open the flash module.
- Remove the two 6mm JIS #00 screws found inside of the flash housing.

Step 7



- Use a plastic opening tool to pry apart both halves of the camera.
- Remove the back panel.

Step 8 — LCD Screen



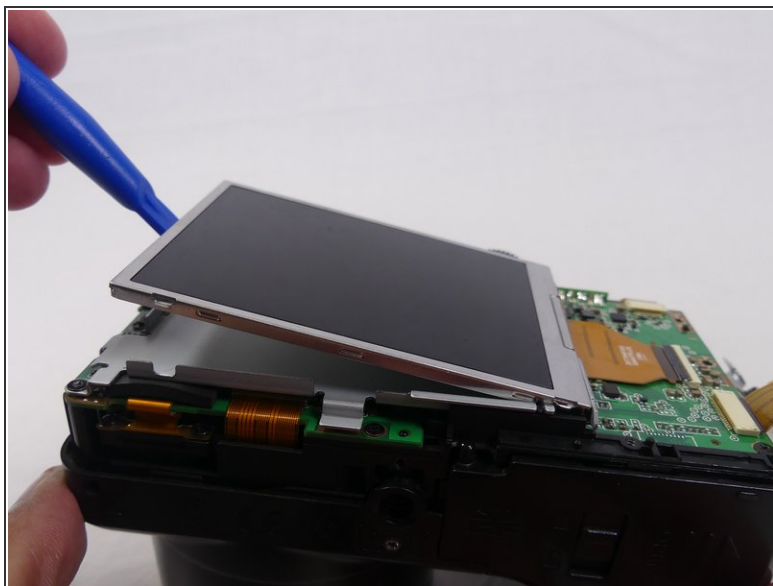
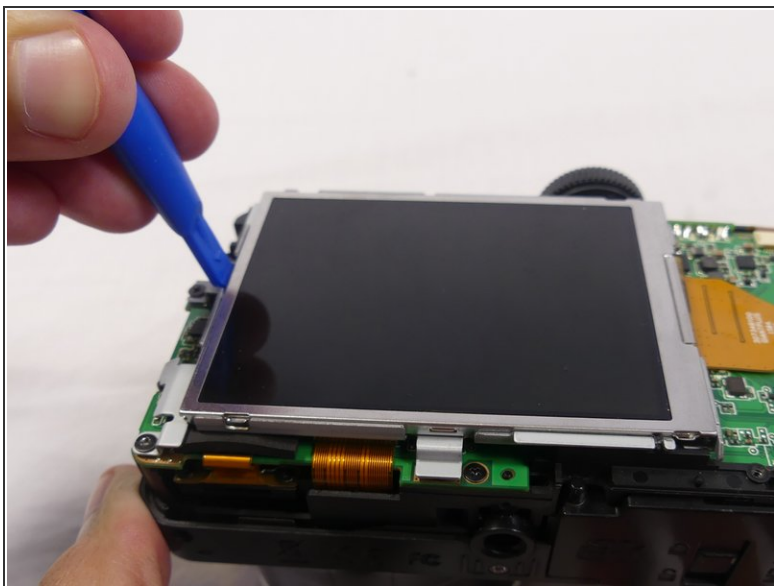
- Remove these three JIS #000 screws from the control board:
 - 5mm screw.
 - 4mm screw.
 - 2mm screw.

Step 9



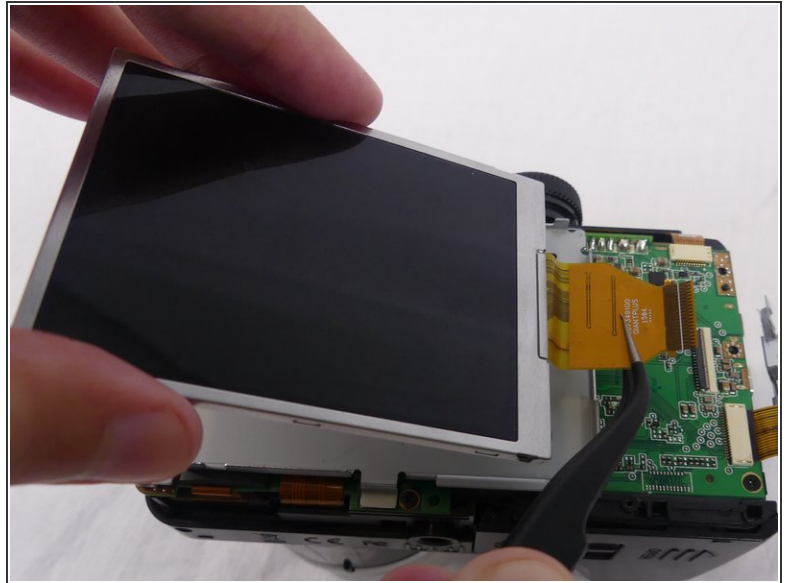
- Pull the small metal switch plate to the side.

Step 10



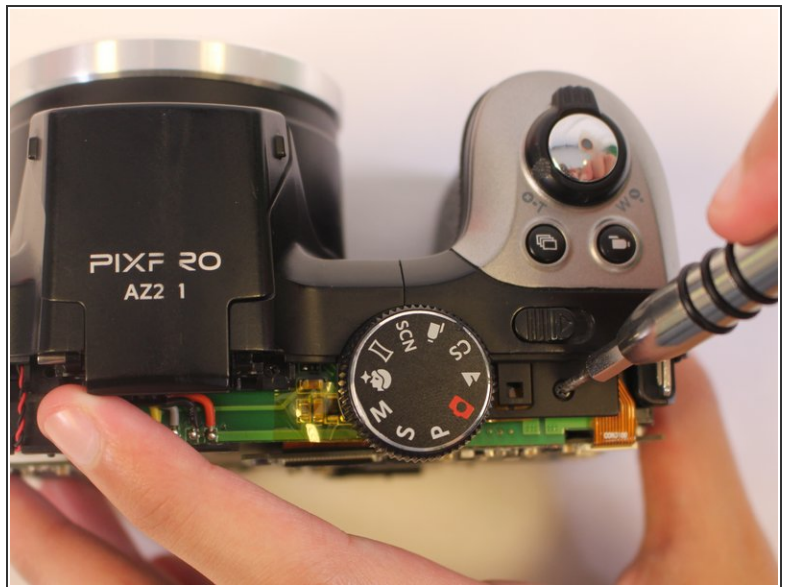
- Pry the LCD screen out of the metal housing plate with a plastic opening tool.

Step 11



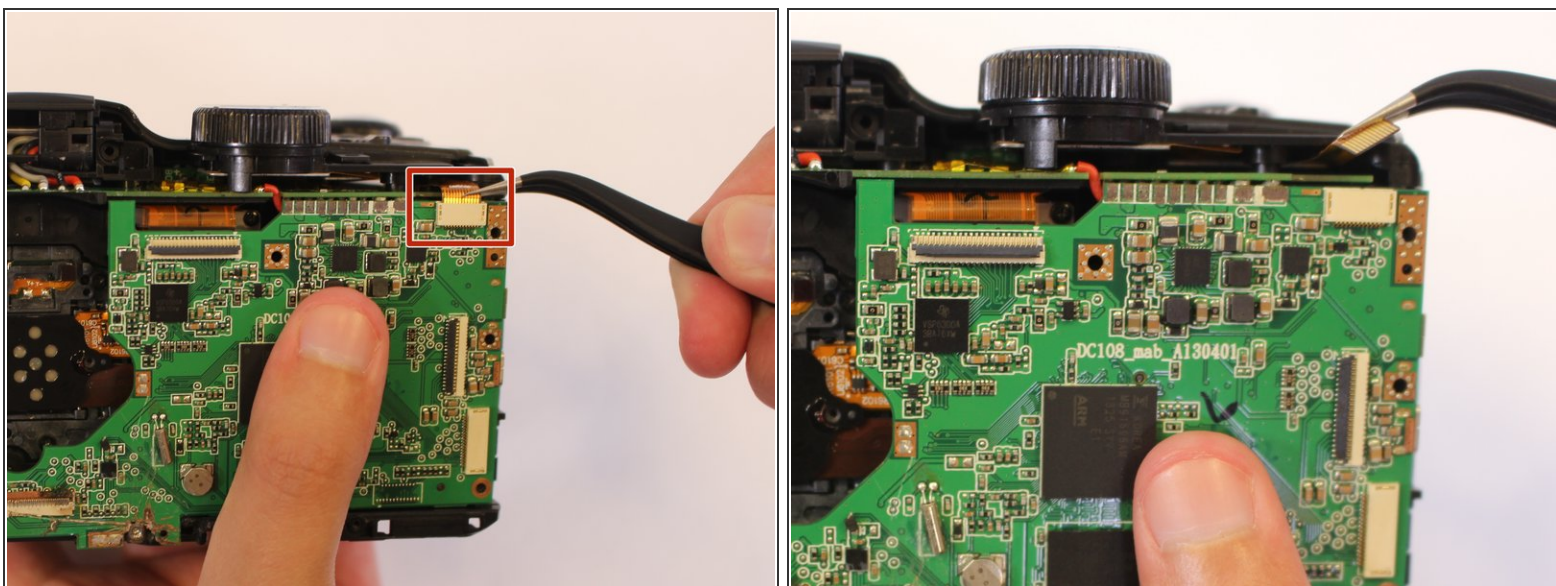
- Use a spudger to flip up the retaining flap on the display ribbon cable [ZIF](#) socket.
- Pull the orange cable out of the socket.

Step 12 — Mode Dial



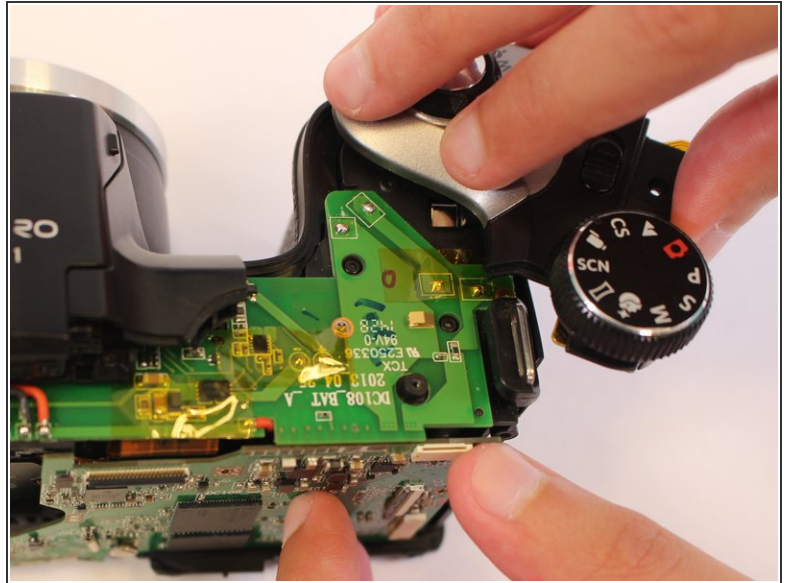
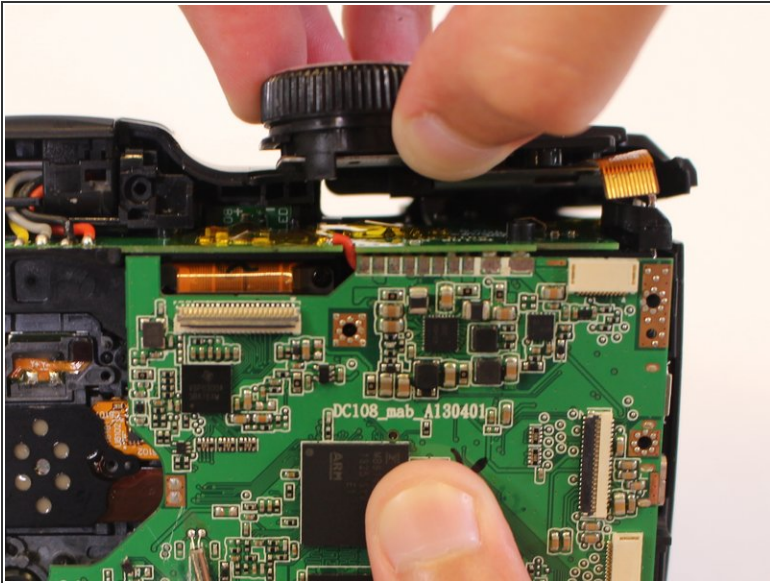
- Remove one 4-mm screw using a J000 screwdriver from the top of the camera, near the mode dial.

Step 13




- Using the tweezers, disconnect the orange cable connection at the top of the motherboard near the mode dial.

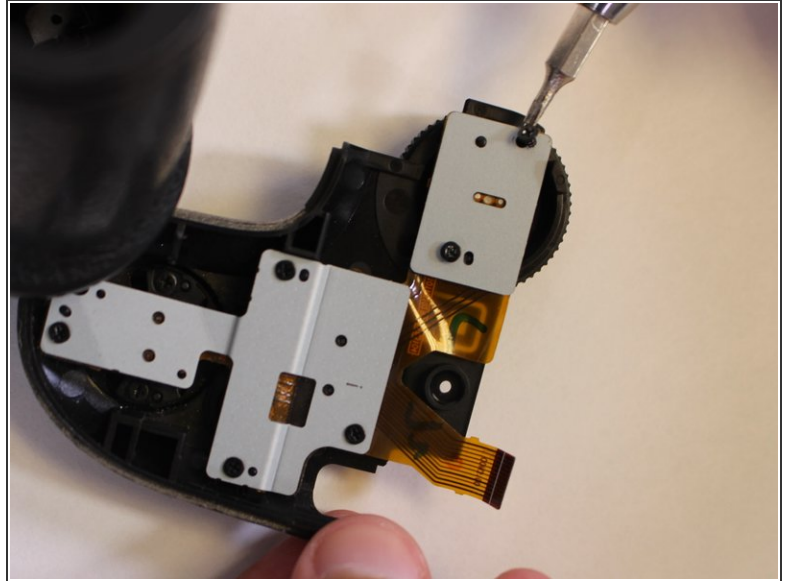
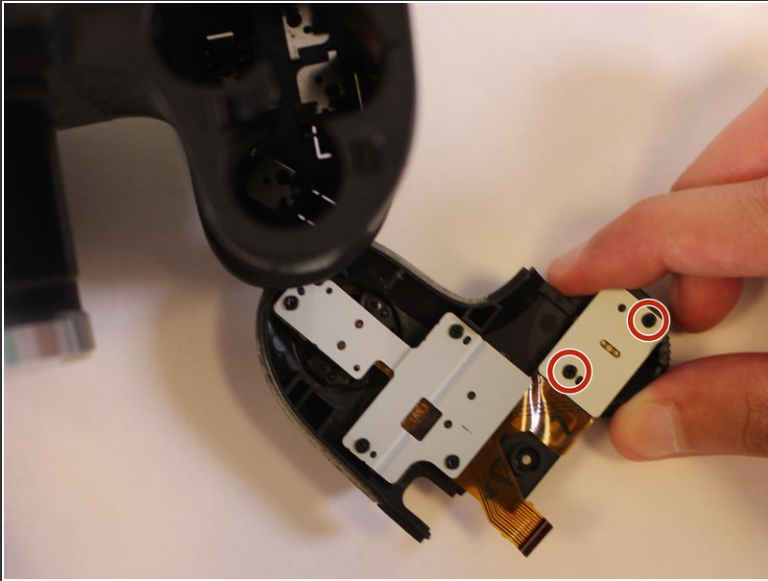
Step 14



- Pull the top side cover up.
- Rotate the top side cover to the right.

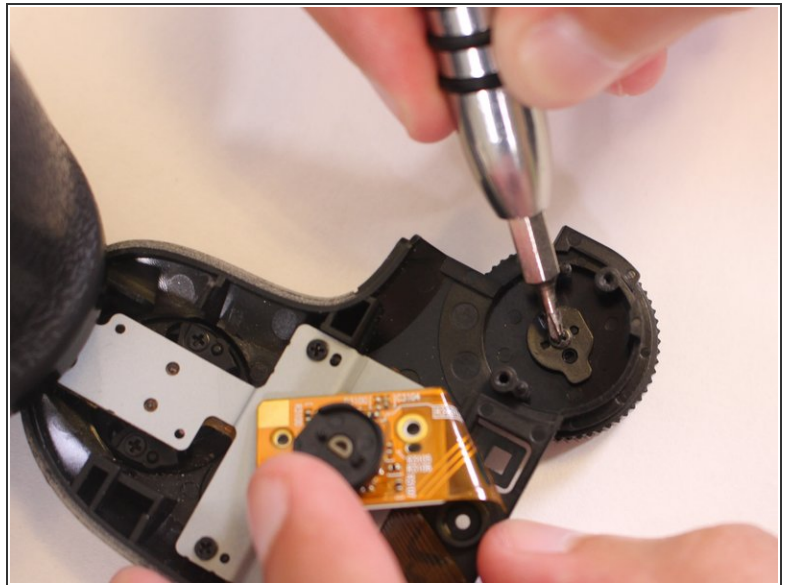
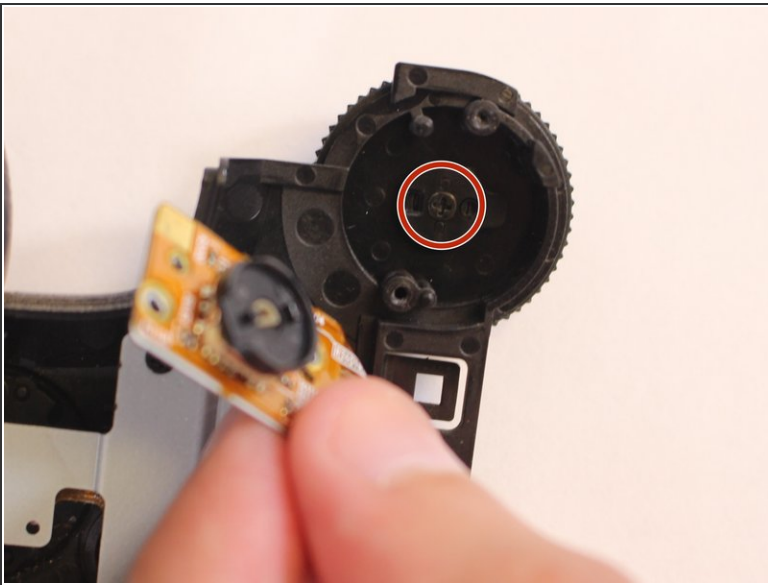
 Rotate carefully to avoid breaking the screw attaching the top side cover to the main body of the camera.

Step 15



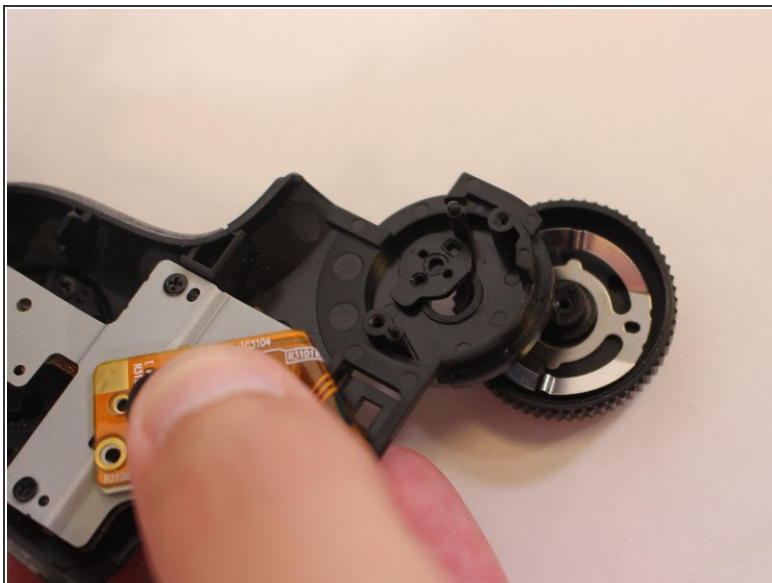
- Turn the camera upside down.
- Remove two 2mm JIS #000 screws from the metal base of the mode dial.

Step 16



- Lift the metal base and remove the 4mm JIS #000 screw from the center of the mode dial.

Step 17



- The mode dial should now be loose and can be easily removed from the top side cover.
- Turn the mode dial upside down to remove the metal part inside.

To reassemble your device, follow these instructions in reverse order.