



Kodak PixPro AZ251 Shutter Button Replacement

Learn how to repair and replace a faulty shutter button for your Kodak PixPro AZ251.

Written By: Rachel Llewellyn



INTRODUCTION

In this guide, you will learn how to repair and replace a loose or faulty shutter button on your Kodak PixPro AZ251.



TOOLS:

- [JIS #000 Screwdriver](#) (1)
 - [JIS #00 Screwdriver](#) (1)
 - [Phillips #00 Screwdriver](#) (1)
 - [Tweezers](#) (1)
 - [iFixit Opening Tools](#) (1)
-

Step 1 — Batteries



- Slide switch to open lock position.

Step 2



- Press down on the battery cover and slide outwards to open.

Step 3



- Remove the batteries.

Step 4 — Back Cover



- Remove a total of four 5mm JIS #000 screws from around the camera:
 - Two screws from the right side.
 - Two screws from the left side.

Step 5



- Remove the single 5mm Phillips #00 screw from the bottom.

Step 6



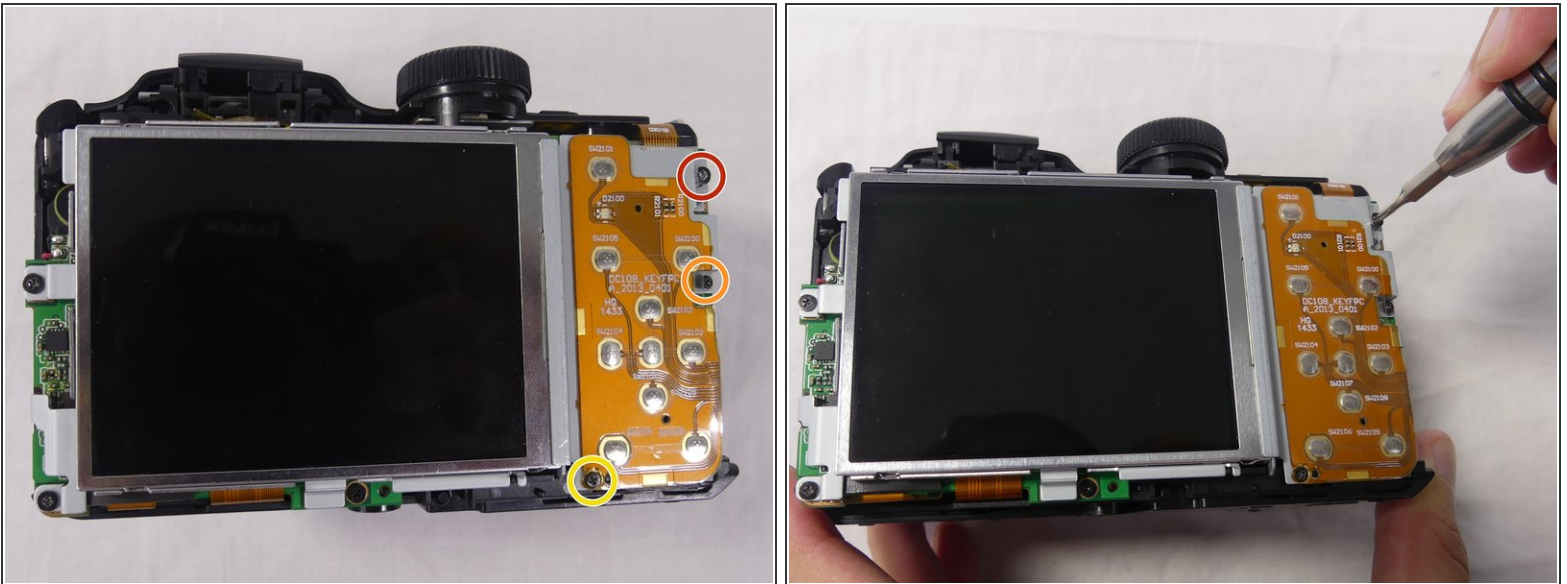
- Open the flash module.
- Remove the two 6mm JIS #00 screws found inside of the flash housing.

Step 7



- Use a plastic opening tool to pry apart both halves of the camera.
- Remove the back panel.

Step 8 — LCD Screen



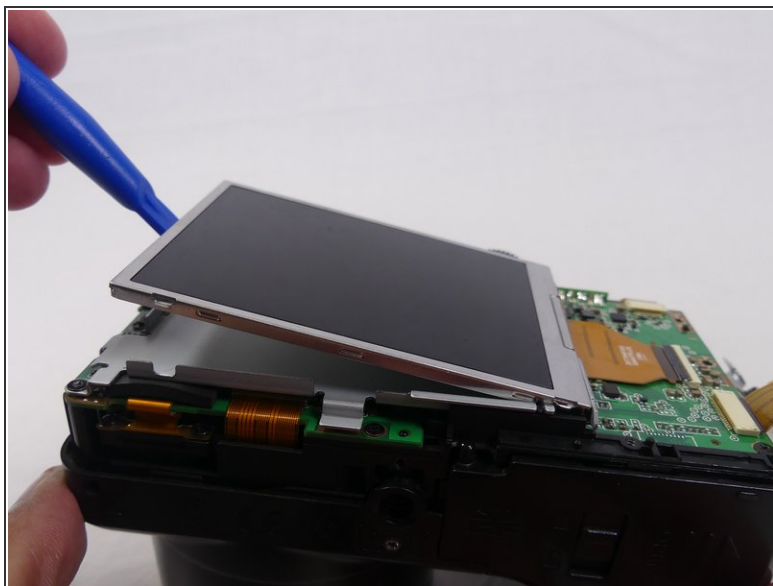
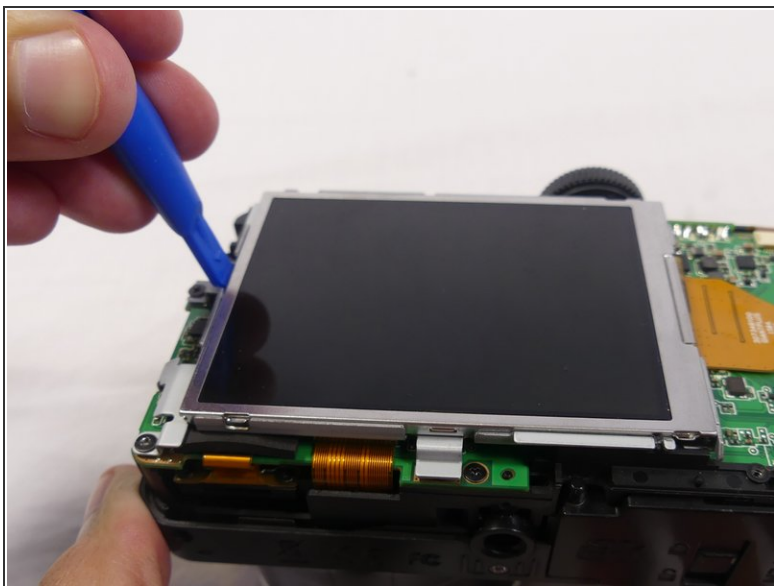
- Remove these three JIS #000 screws from the control board:
 - 5mm screw.
 - 4mm screw.
 - 2mm screw.

Step 9



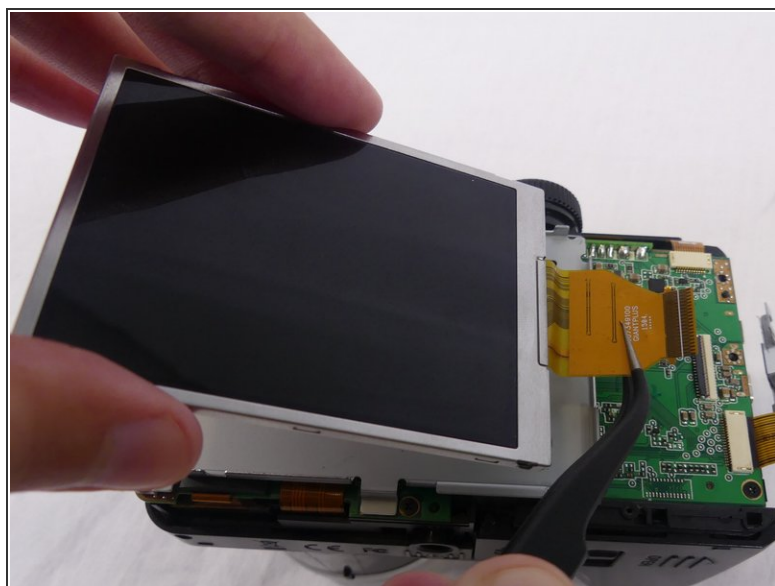
- Pull the small metal switch plate to the side.

Step 10



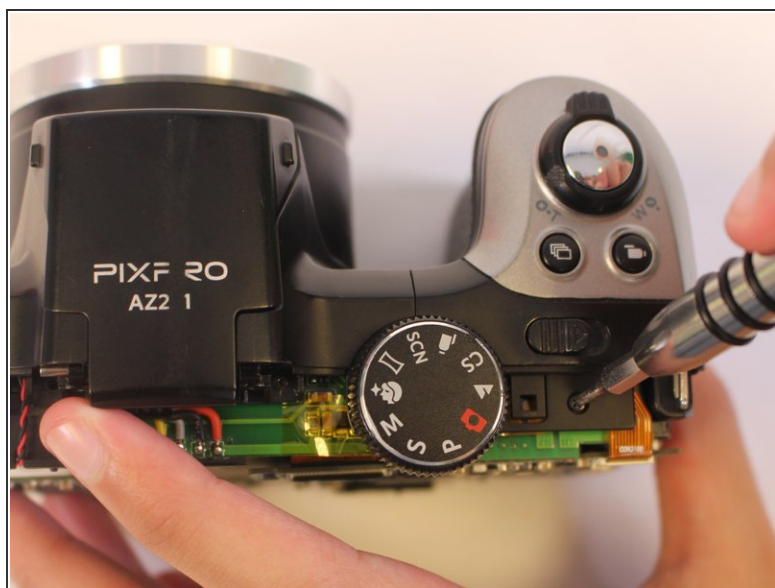
- Pry the LCD screen out of the metal housing plate with a plastic opening tool.

Step 11



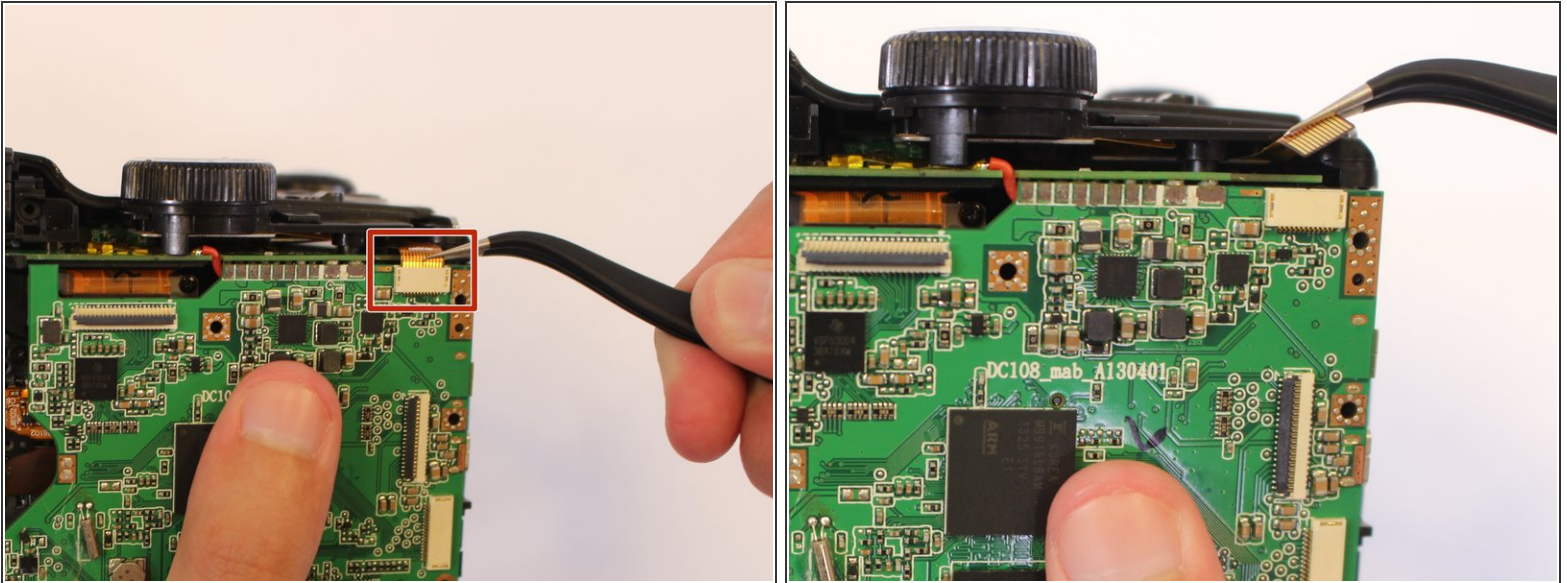
- Use a spudger to flip up the retaining flap on the display ribbon cable [ZIF](#) socket.
- Pull the orange cable out of the socket.

Step 12 — Shutter Button



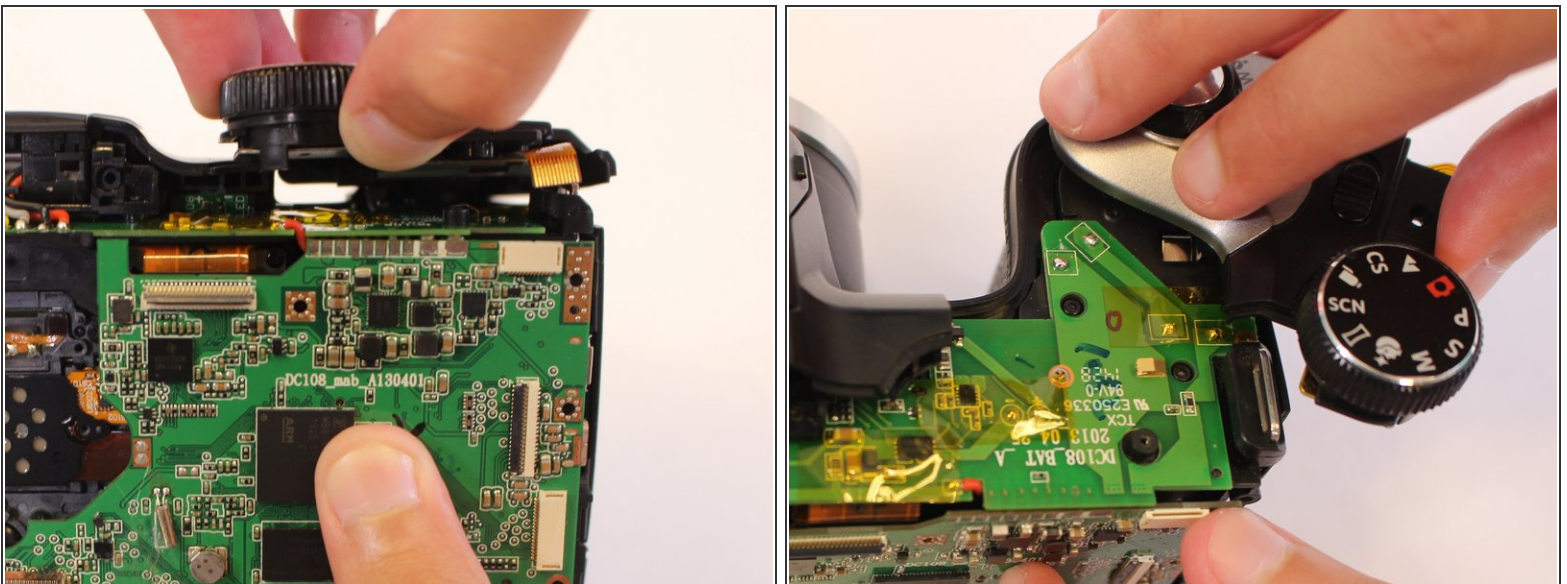
- Remove one 4mm JIS #000 screw from the top of the camera.

Step 13



- Using tweezers, disconnect the orange cable connection at the top of the motherboard.

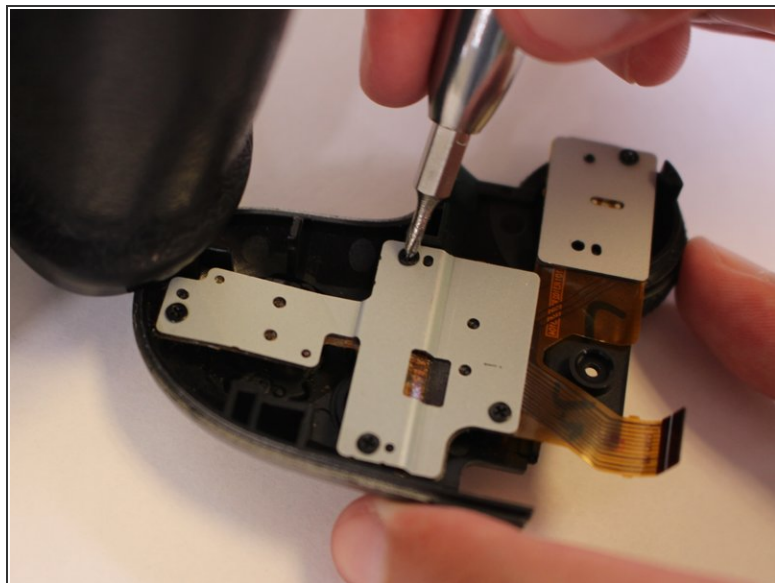
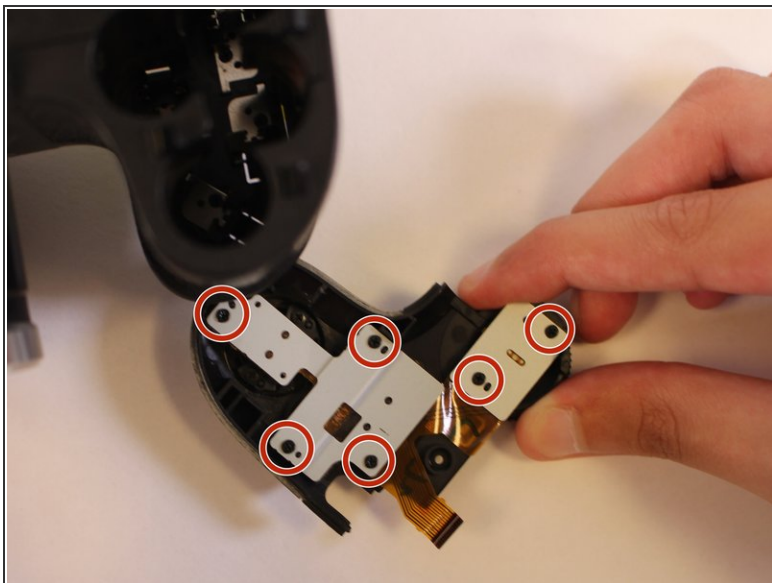
Step 14



- Pull the mode dial up and off of the camera.

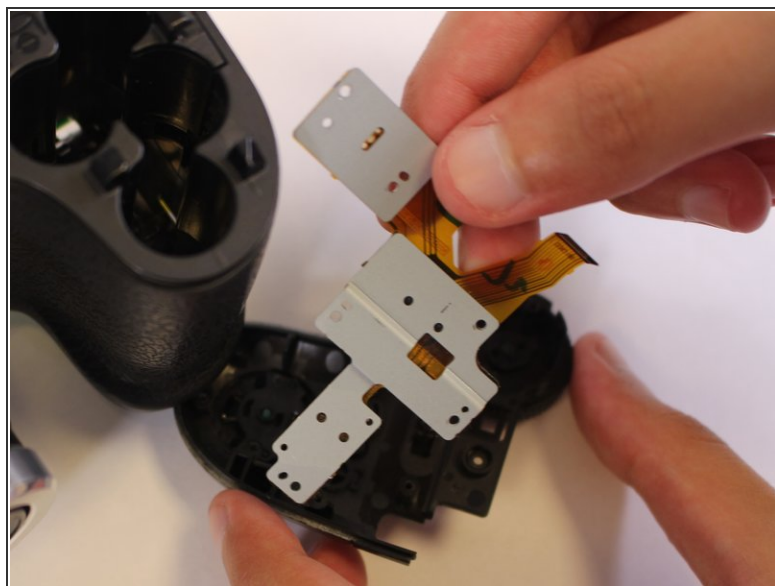
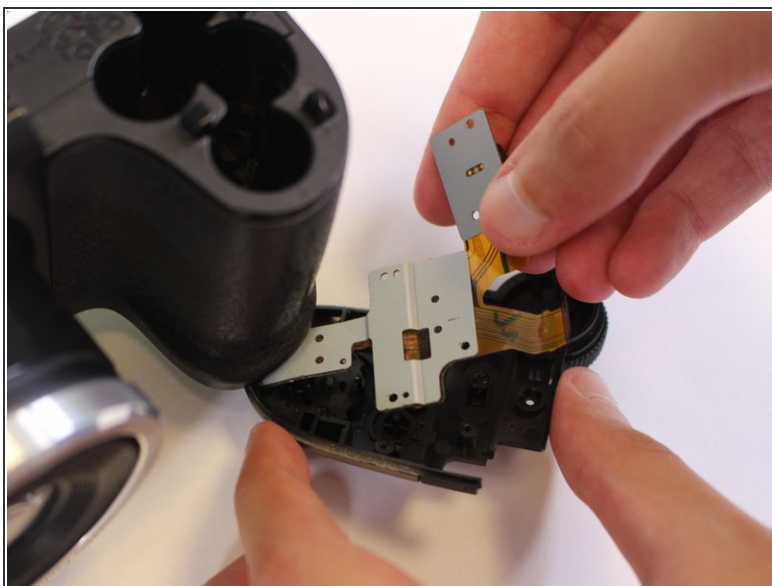
⚠ Rotate carefully to avoid breaking the screw attaching the top side cover to the main body of the camera.

Step 15



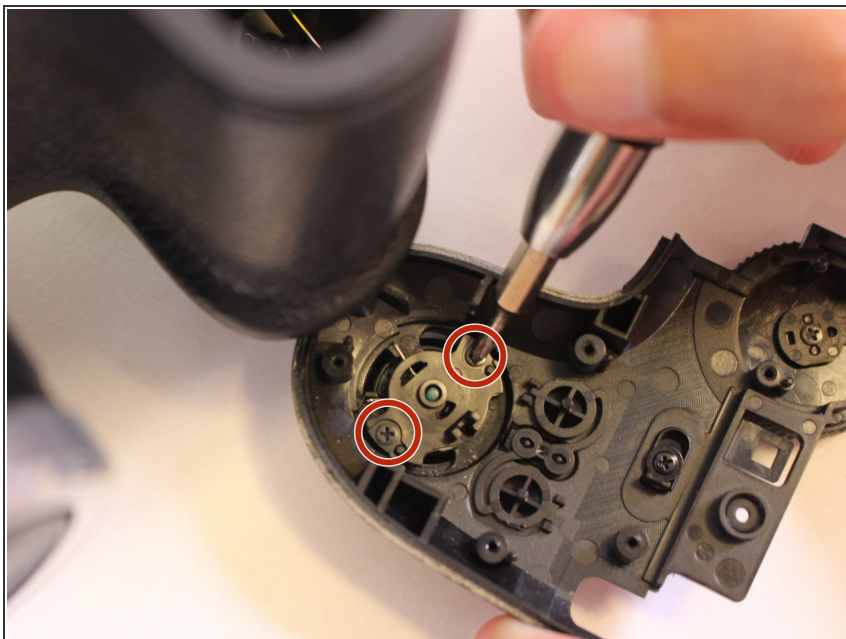
- Turn camera upside down.
- Remove the six 2mm JIS #000 screws from the metal base of the shutter button.

Step 16



- Remove the metal base and ribbon cables.

Step 17



- While holding the shutter button in place, remove the two 4mm JIS #000 screws from the base.

Step 18



- Remove the plastic base of the shutter button using tweezers by pulling it straight upward.

Step 19



- Remove the shutter button by pulling it out from the bottom side of the top cover.

To reassemble your device, follow these instructions in reverse order.