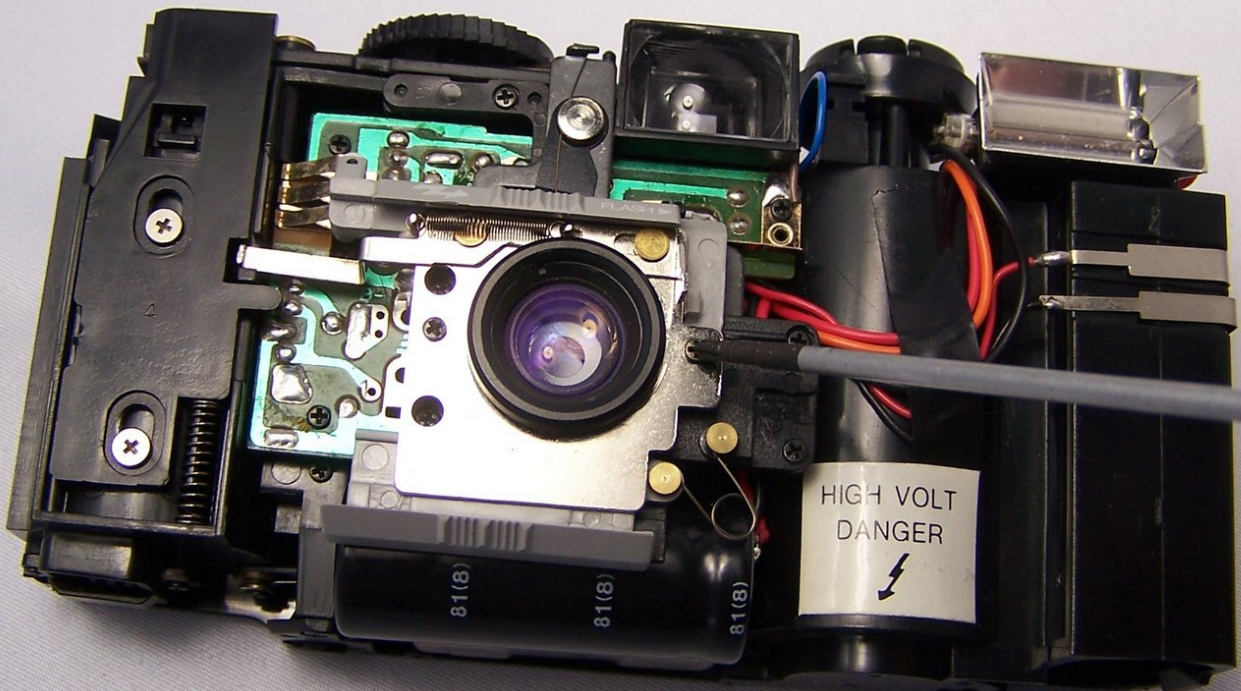




# Kodak S100 EF Lens Replacement

This will guide in the replacing and repair or the Kodak S100 EF lens.

Written By: Michelle



---

## INTRODUCTION

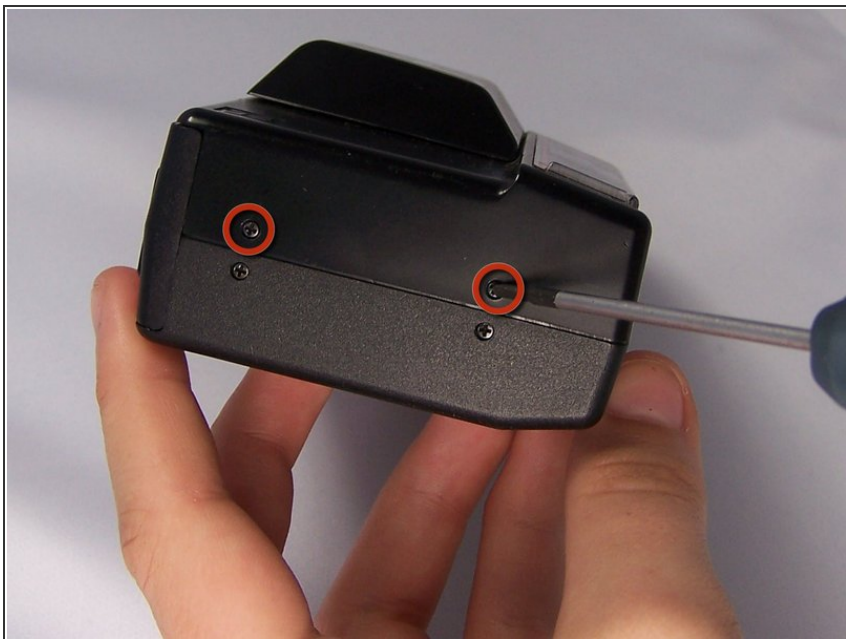
First, Front Cover Teardown guide must be used to get inside the camera in order to remove the lens.



### TOOLS:

- [Phillips #00 Screwdriver](#) (1)
-

## Step 1 — Front Cover



- ① Have the camera facing up and the flash closest to you.
- Unscrew the two 6.2 mm Phillips screws on the top half of the camera.

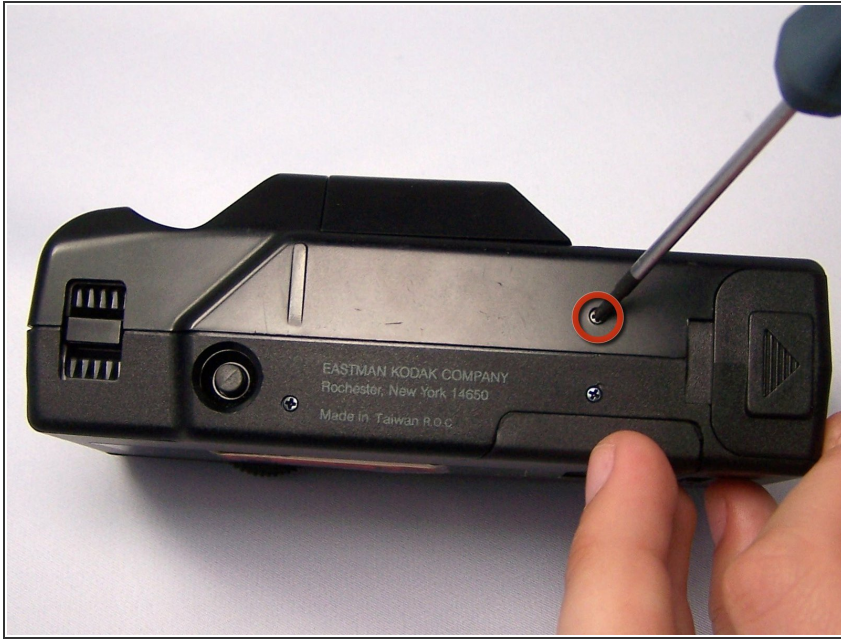
## Step 2



- ① Flip camera to other side-with flash farthest from you.
- Unscrew top two 6.2mm Phillips screws on this side.

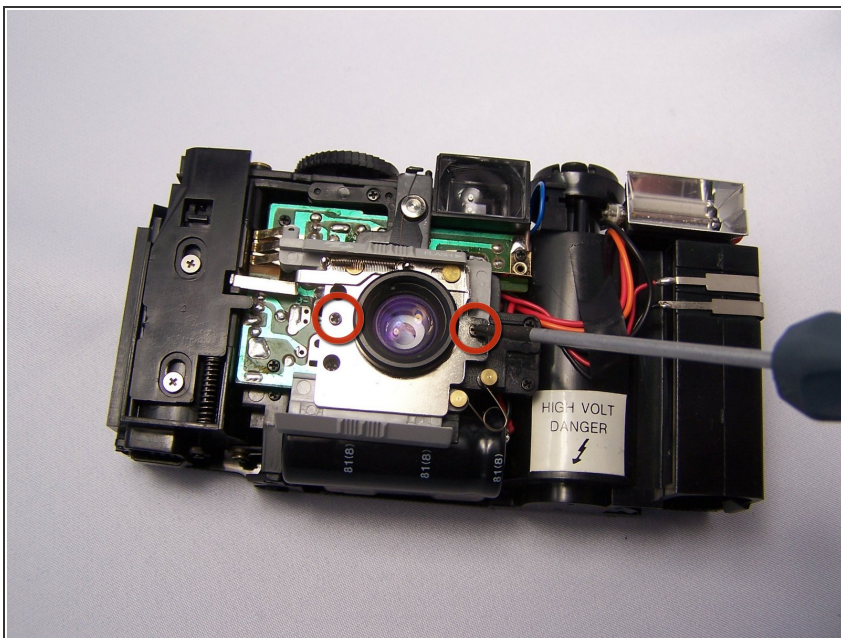


## Step 3



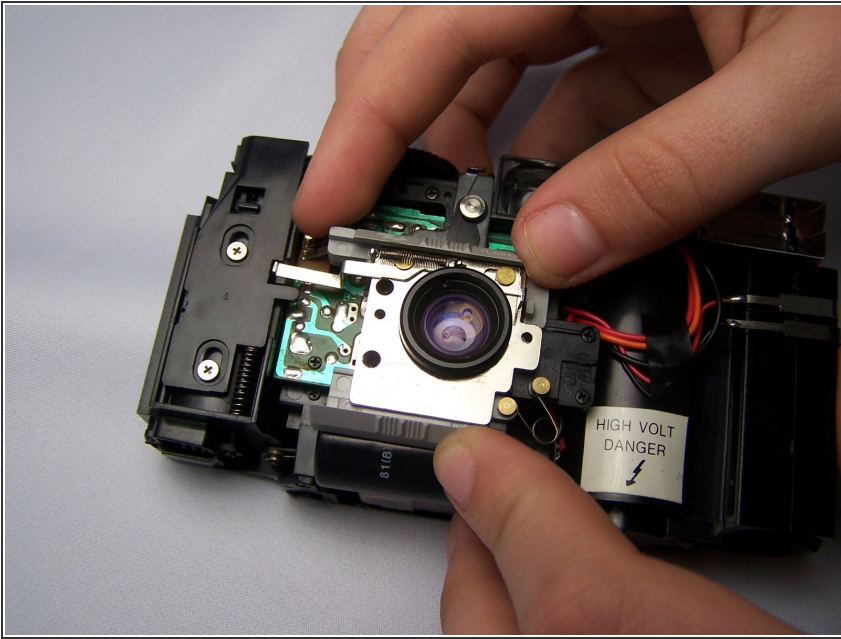
- ❗ Turn the camera so the bottom is facing up with the front facing away.
- Unscrew the 6.2mm Phillips screw on the top right.
- The front cover is now unscrewed and should be lifted up evenly and removed.

## Step 4 — Lens



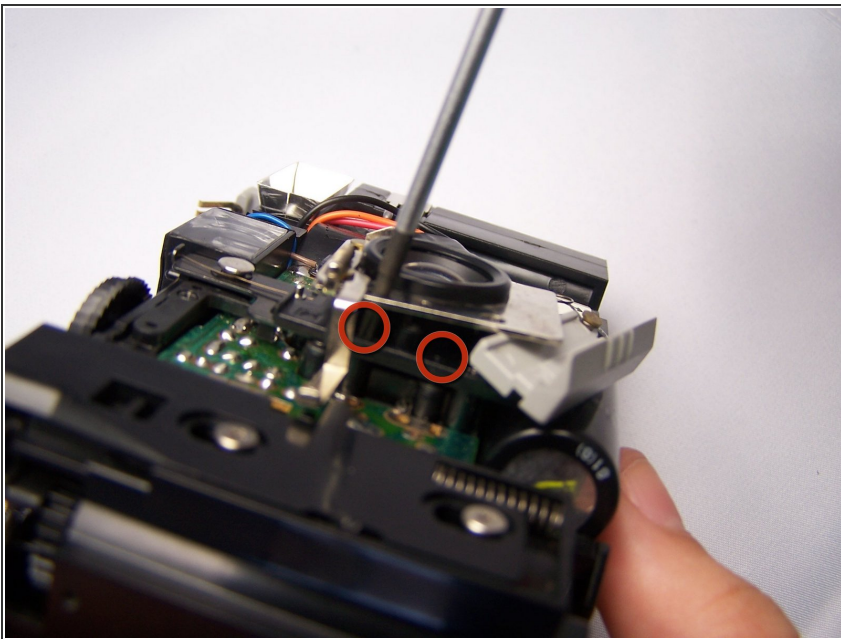
- Remove the two 6.2mm Phillips screws on either side of the lens on the metal plate.

## Step 5



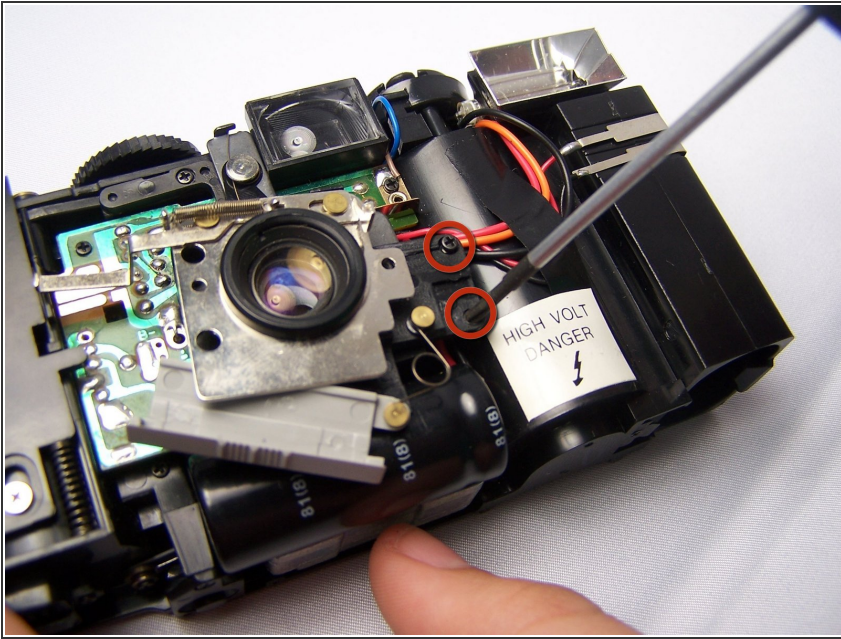
- ❗ Pull aside the top plastic piece resting on the metal lens plate in order to access the other screws.

## Step 6



- ❗ To remove other screws, metal panel must be lifted up slightly to access.
- Lift metal panel and insert screwdriver through holes in panel to reach screws underneath. Remove the two 6.2mm Phillips screws.

## Step 7



- ① Look at the black plate on the right side of the lens that the metal plate is resting on.
- Unscrew two 6.2mm Phillips screws on the black plate next to the lens.
- At this point, all screws are removed and lens can should be carefully lifted and removed, including both plates and the plastic ring around the lens.

To reassemble your device, follow these instructions in reverse order.