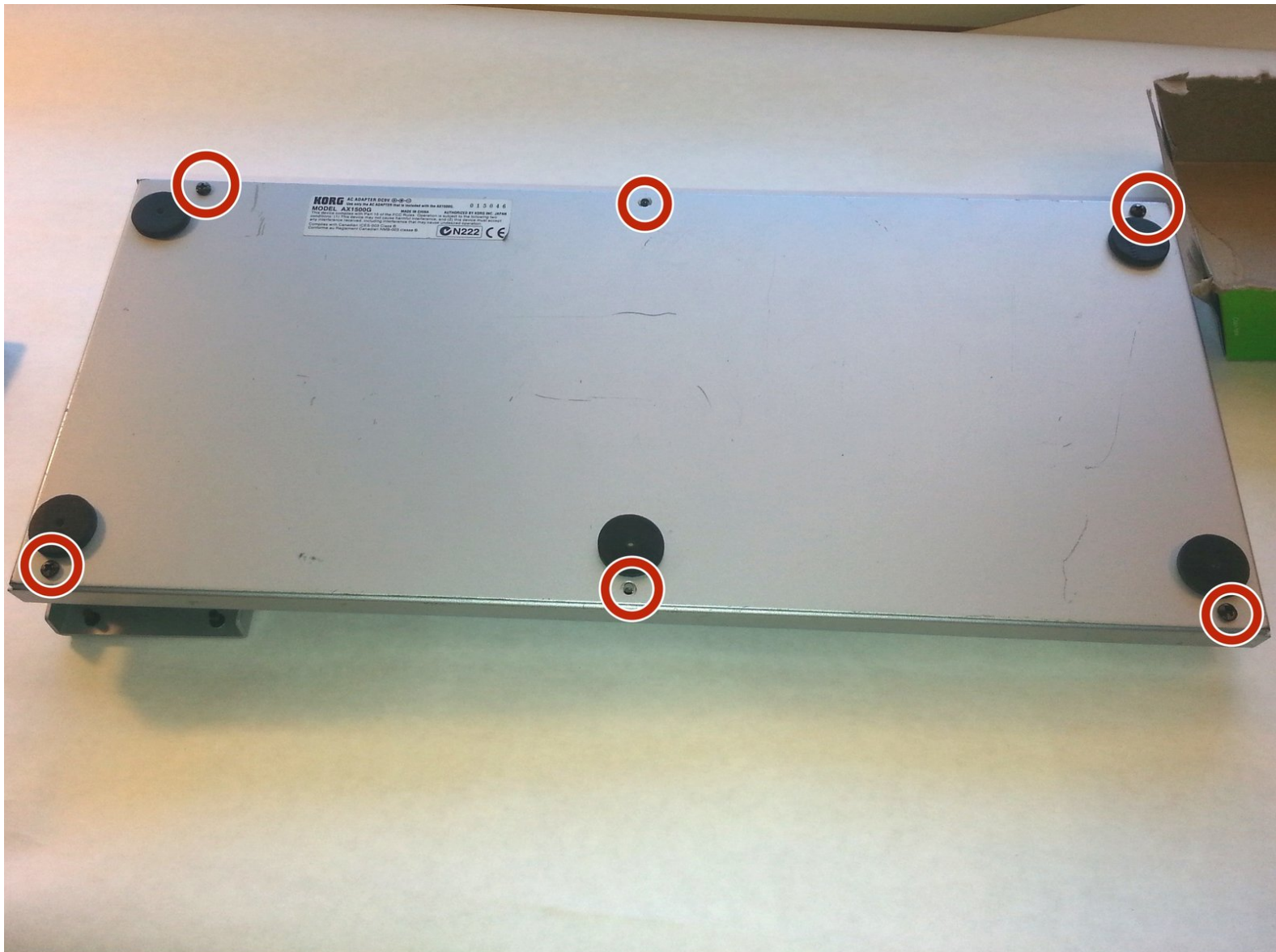




Korg Toneworks AX1500G Pedal Switch Replacement

Learn how to remove an old pedal switch from a Korg Toneworks pedal board.

Written By: Gabriel Maraboto



INTRODUCTION

You will be able to take out the pedal switch in your Korg pedal board. With the right knowledge and parts you can fix your pedal's volume control.



TOOLS:

- [Small Phillips Head Screwdriver](#) (2)

The screws on the outside require a smaller screwdriver than those inside

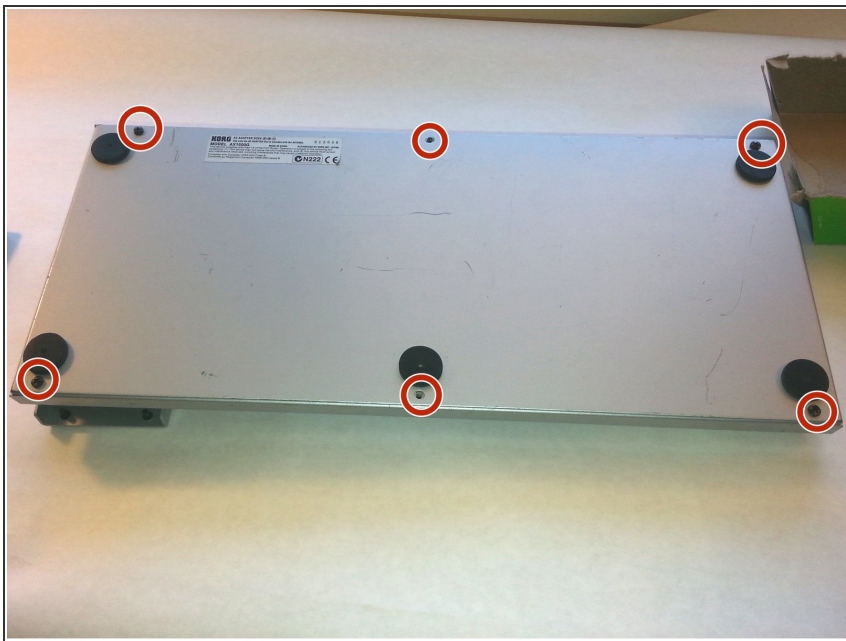
- [Soldering Iron](#) (1)



PARTS:

- [Interrupter \(Foot switch\)](#) (1)

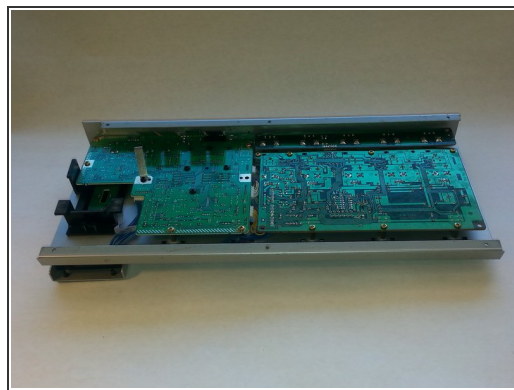
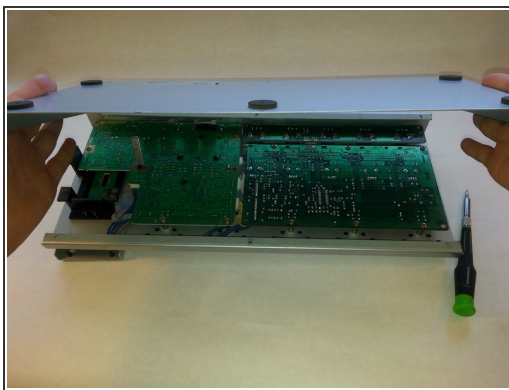
Step 1 — Pedal Switch



- Remove the black 8.0mm Phillips screws from the back of the Pedal Board.

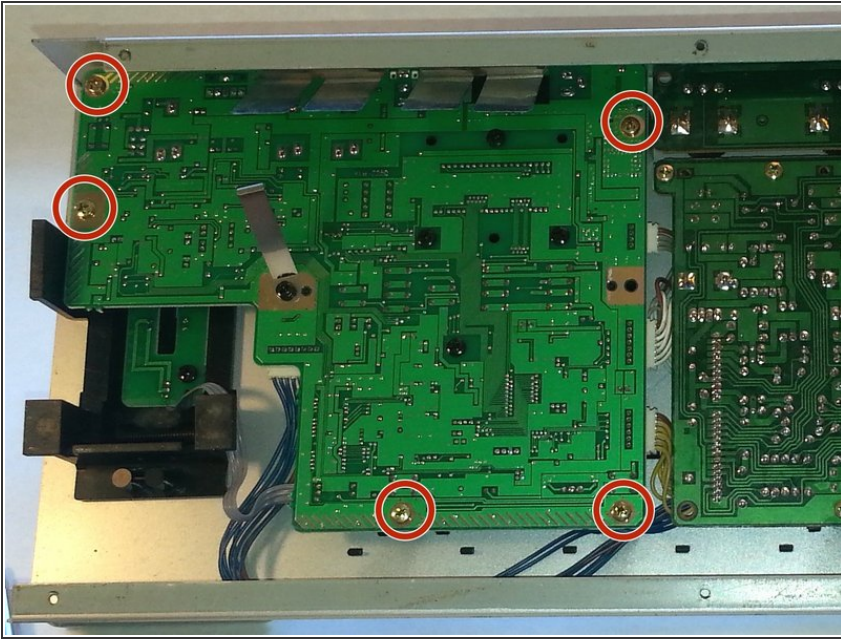
⚠ Be careful when working with small electronics, as many of the components are fragile.

Step 2



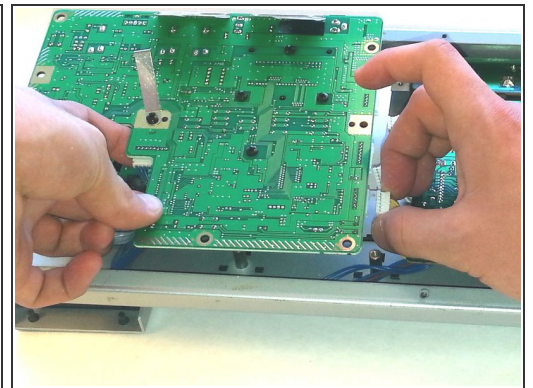
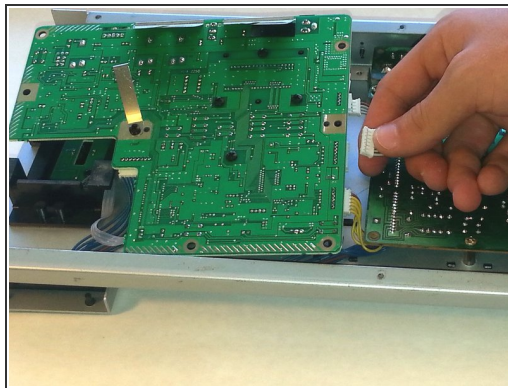
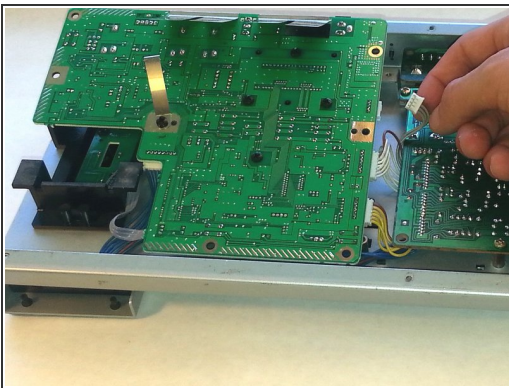
- Remove the back panel of the board.

Step 3



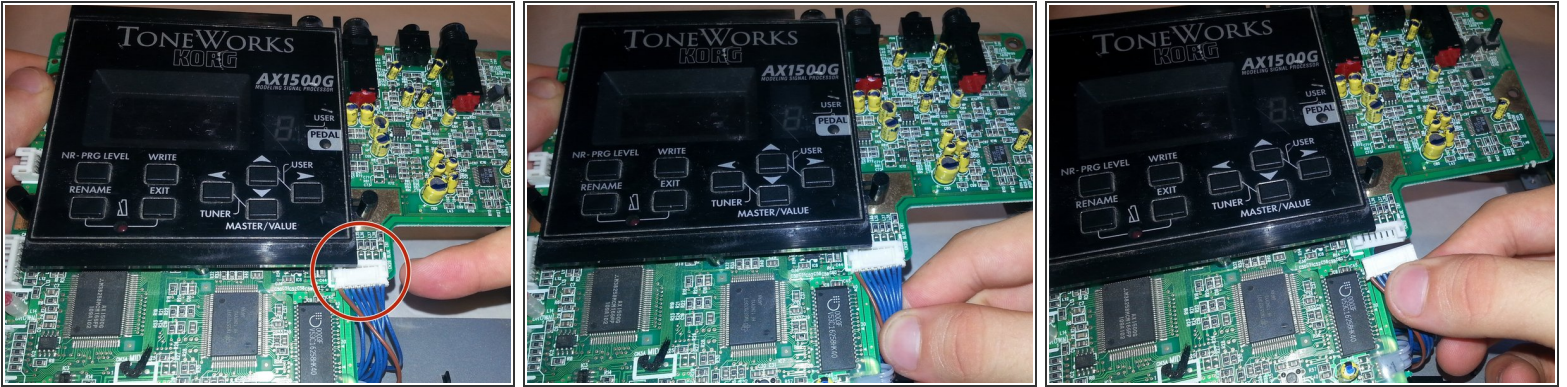
- Unscrew the five golden 8.0mm Phillips screws holding down the left circuit board.
- ⚠ Be careful not to hit to metal parts on the circuit board, this could cause sparks and failure.

Step 4



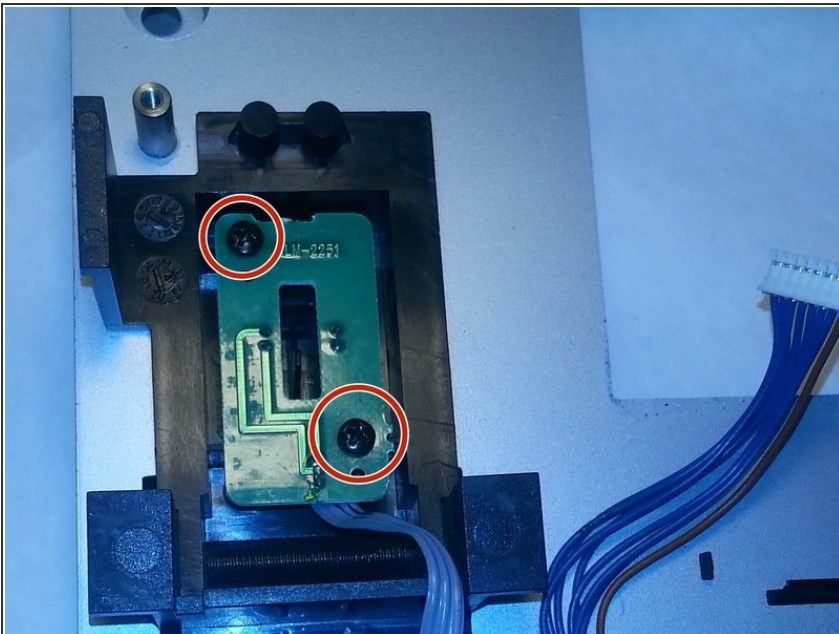
- Carefully unplug three wires connecting the left circuit board to the right circuit board.
- ⓘ The wires may be stuck and difficult to remove. Try to pull from the plastic part.

Step 5



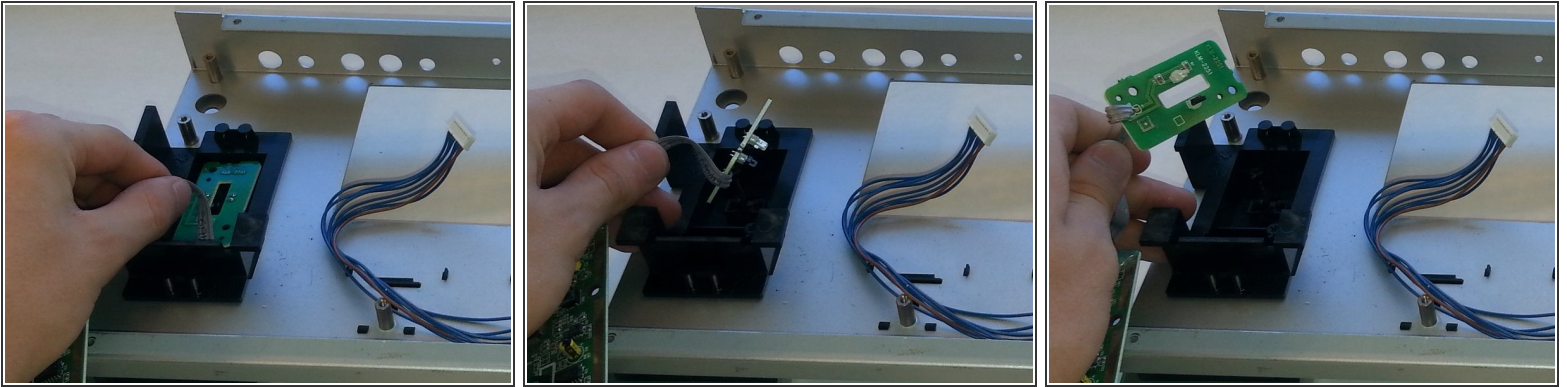
- i** The circuit board is still connected at this point.
- Carefully pull out the circuit board and turn it over.
 - Unplug the last cable connecting it to the other large circuit board.

Step 6



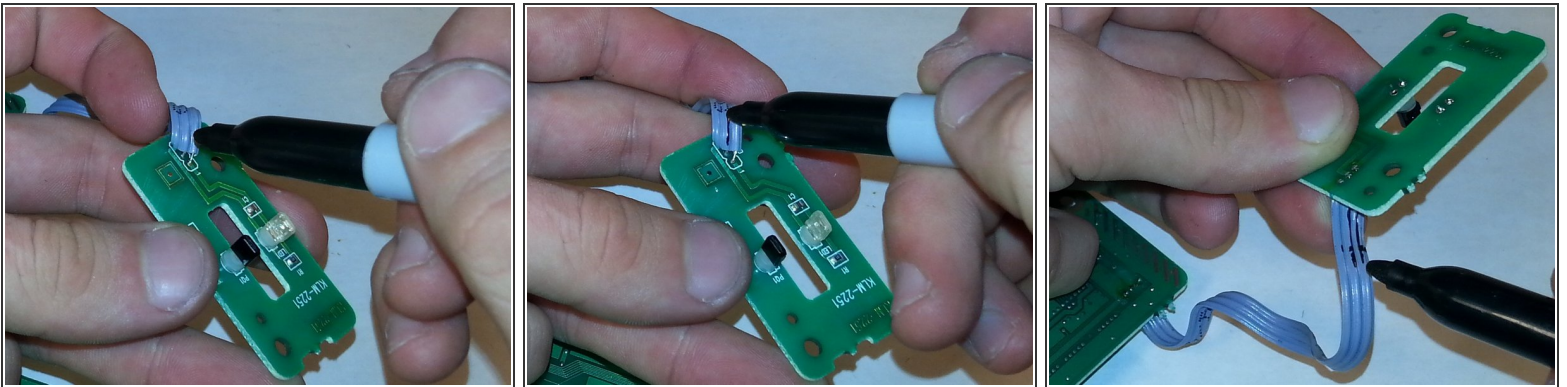
- Unscrew the two 8.0 mm black Phillips screws from the small circuit board.

Step 7



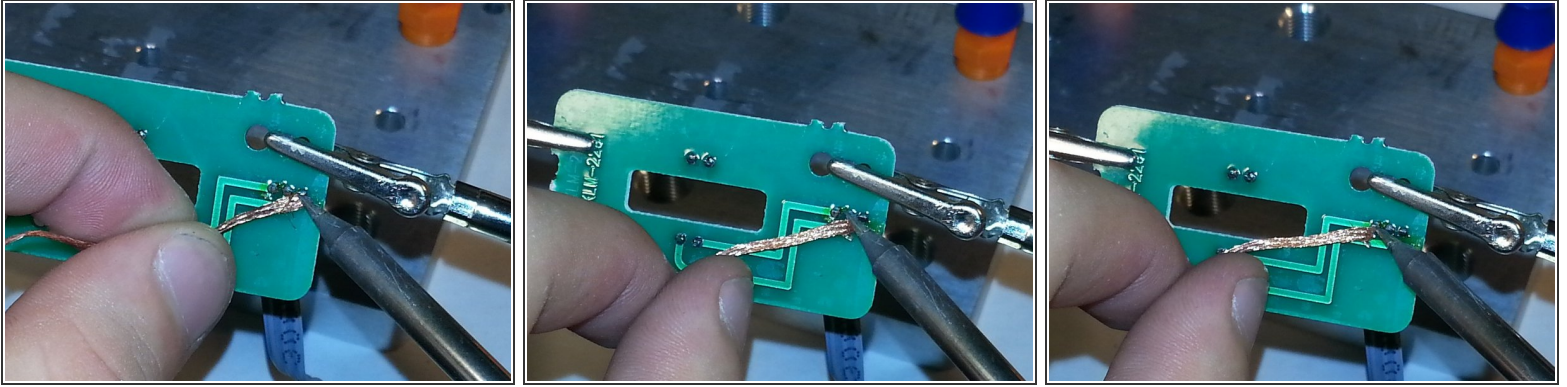
- Gently pull out the small circuit board by the purple wire.

Step 8



- Mark the wire connected to the small circuit board so for future reference.

Step 9



 Soldering Irons can be very dangerous if you are inexperienced.

- Desolder the wires connecting to the board and remove the board.
- Solder the new foot switch circuit on

To reassemble your device, follow these instructions in reverse order.