



Krups 963 Power Cord Replacement

Replacing a damaged or non-function power cord.

Written By: Wyatt Hall



INTRODUCTION

No prior knowledge needed! Be sure to unplug the device before beginning this guide to avoid electrical shock and damage to yourself and the device.



TOOLS:

- [Flathead 3/32" or 2.5 mm Screwdriver](#) (1)
 - [Phillips #2 Screwdriver](#) (1)
 - [Phillips #0 Screwdriver](#) (1)
-

Step 1 — Removing Bottom Screws



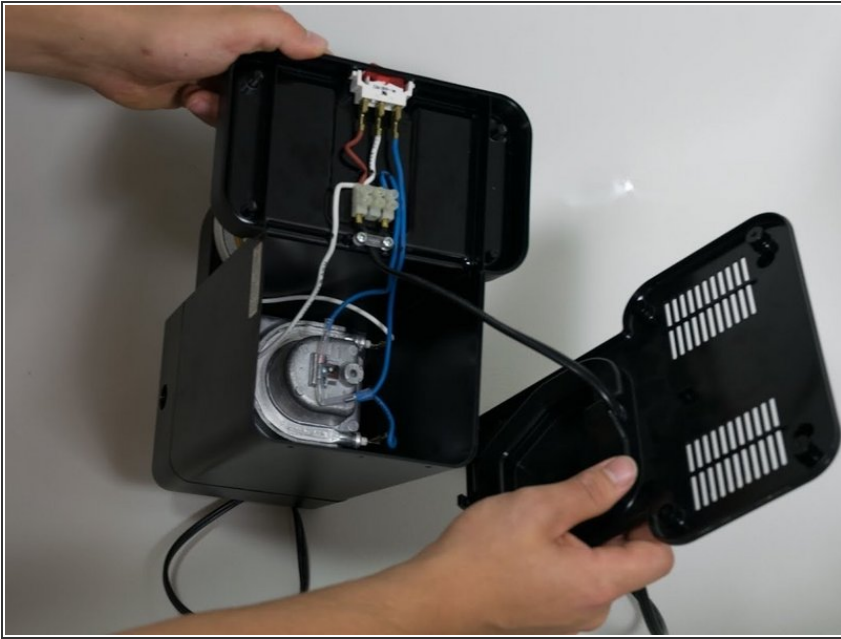
- ⚠ Make sure the device is unplugged before continuing.
- Use a Phillips size 2 screwdriver to remove the four 12mm screws found on the bottom of the machine.

Step 2



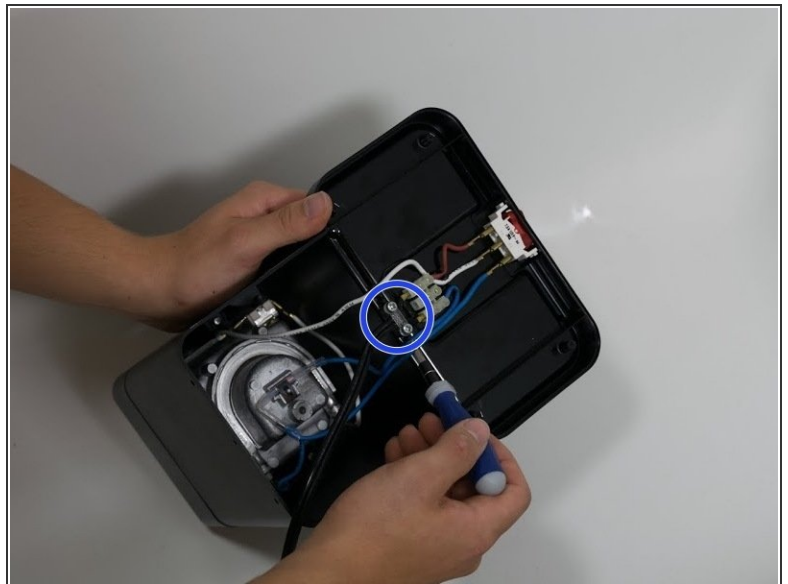
- Remove the single black Phillips size 0 10mm length screw on the back of the machine.

Step 3



- Remove the bottom cover from the machine and slide it down the power cord.

Step 4 — Power Cord



- Use the PH2 (or similar) screw driver to remove the two 12mm screws holding the clear restraining brace.
- Remove the restraining brace from the machine base.

Step 5



- Use a 2.0 flat head (or similar) screw driver to loosen the screw holding the power cord in.

To reassemble your device, follow these instructions in reverse order.