



Krups 963 Power Switch Replacement

A guide to replacing the red power switch on the front of the machine.

Written By: Wyatt Hall

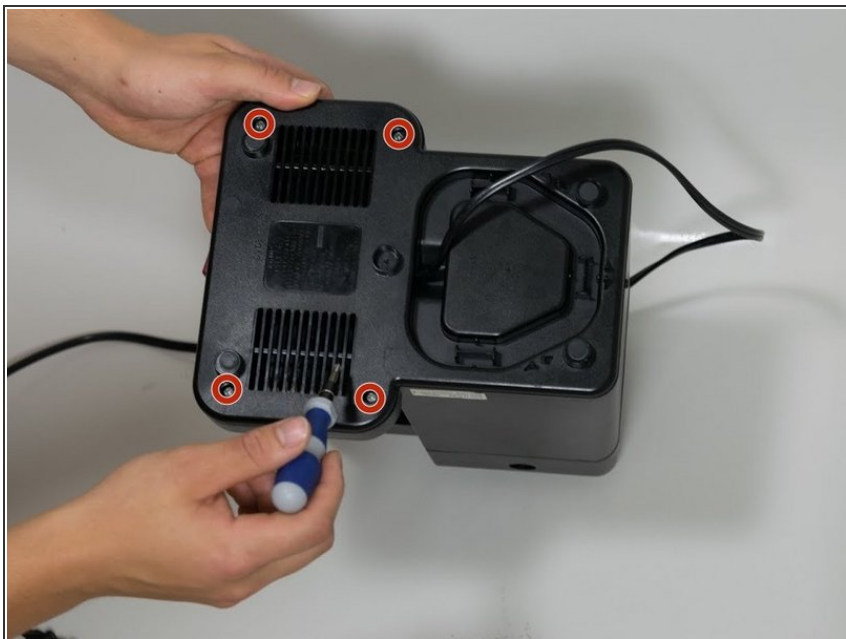




TOOLS:

- 8" Needle Nose Plier (1)
- Phillips #2 Screwdriver (1)
- Phillips #0 Screwdriver (1)

Step 1 — Removing Bottom Screws



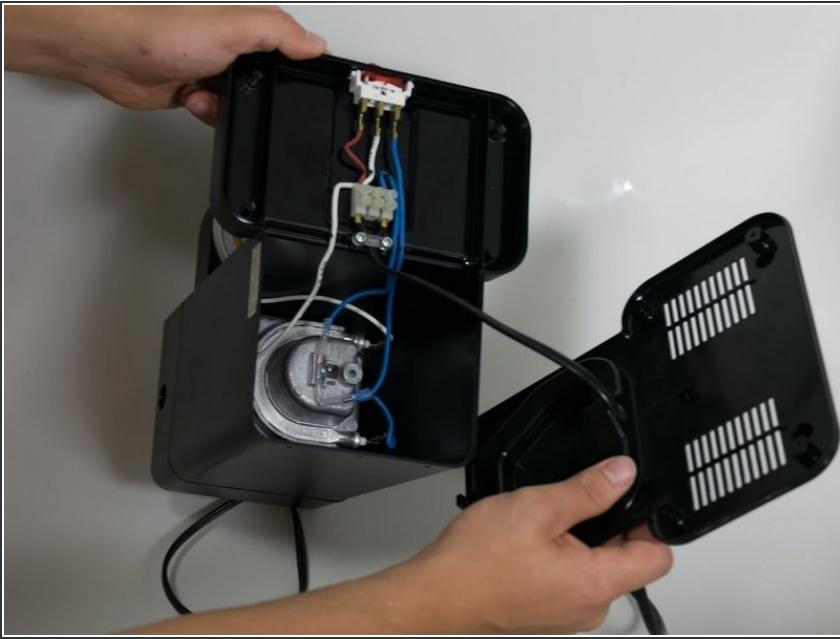
- ⚠ Make sure the device is unplugged before continuing.
- Use a Phillips size 2 screwdriver to remove the four 12mm screws found on the bottom of the machine.

Step 2



- Remove the single black Phillips size 0 10mm length screw on the back of the machine.

Step 3



- Remove the bottom cover from the machine and slide it down the power cord.

Step 4 — Power Switch



- Use your hands or a pair of needle nose pliers to remove the wire attached to the switch.

Step 5



- Grip either in the inside or outside of the switch with the needle nose pliers or your hand, and pull to remove the switch.

To reassemble your device, follow these instructions in reverse order.