



Kugoo S1 front light replace

When your Kugoo S1 front light goes bad, it's time for a quick diy and fix it.

Written By: bmdbest





PARTS:

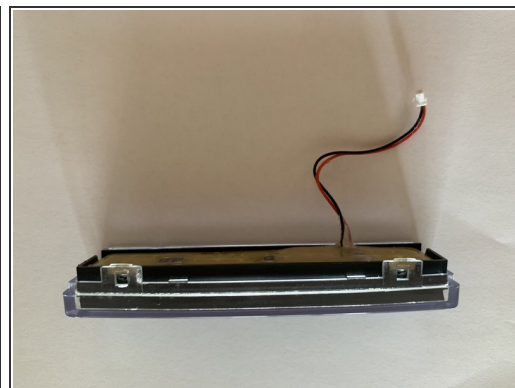
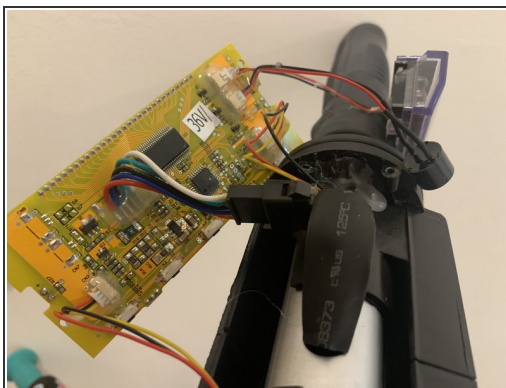
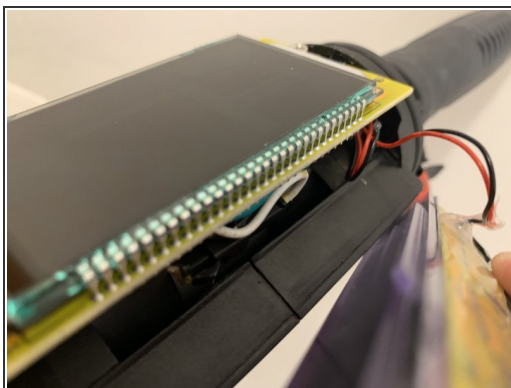
- [Headlight replacement part](#) (1)
-

Step 1 — Remove the four screws



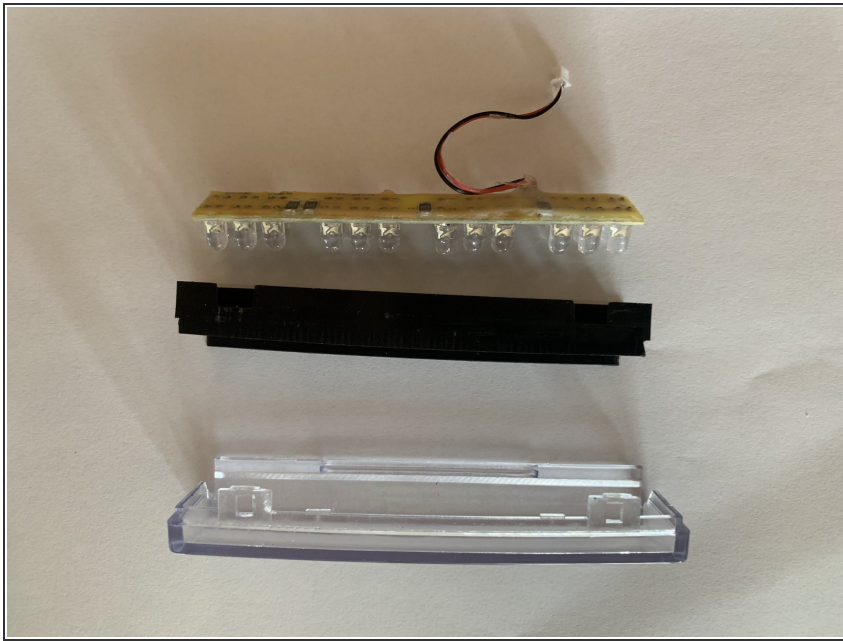
- Unscrew 2 screws above, two on the side.
- Remove the black cover

Step 2



- Unscrew the mainboard (2 screws)
- Unplug light assembly (remember its position and orientation)

Step 3



- Replace the broken light board with a new one.
- Screw back the mainboard (two screws)
- Place back the light in its initial position
- Add the black cover, make sure it snaps together with the light assembly
- Put back the 4 screws for the cover

Before reassembly you can try to power on and test the light, making sure you don't touch any exposed wiring.