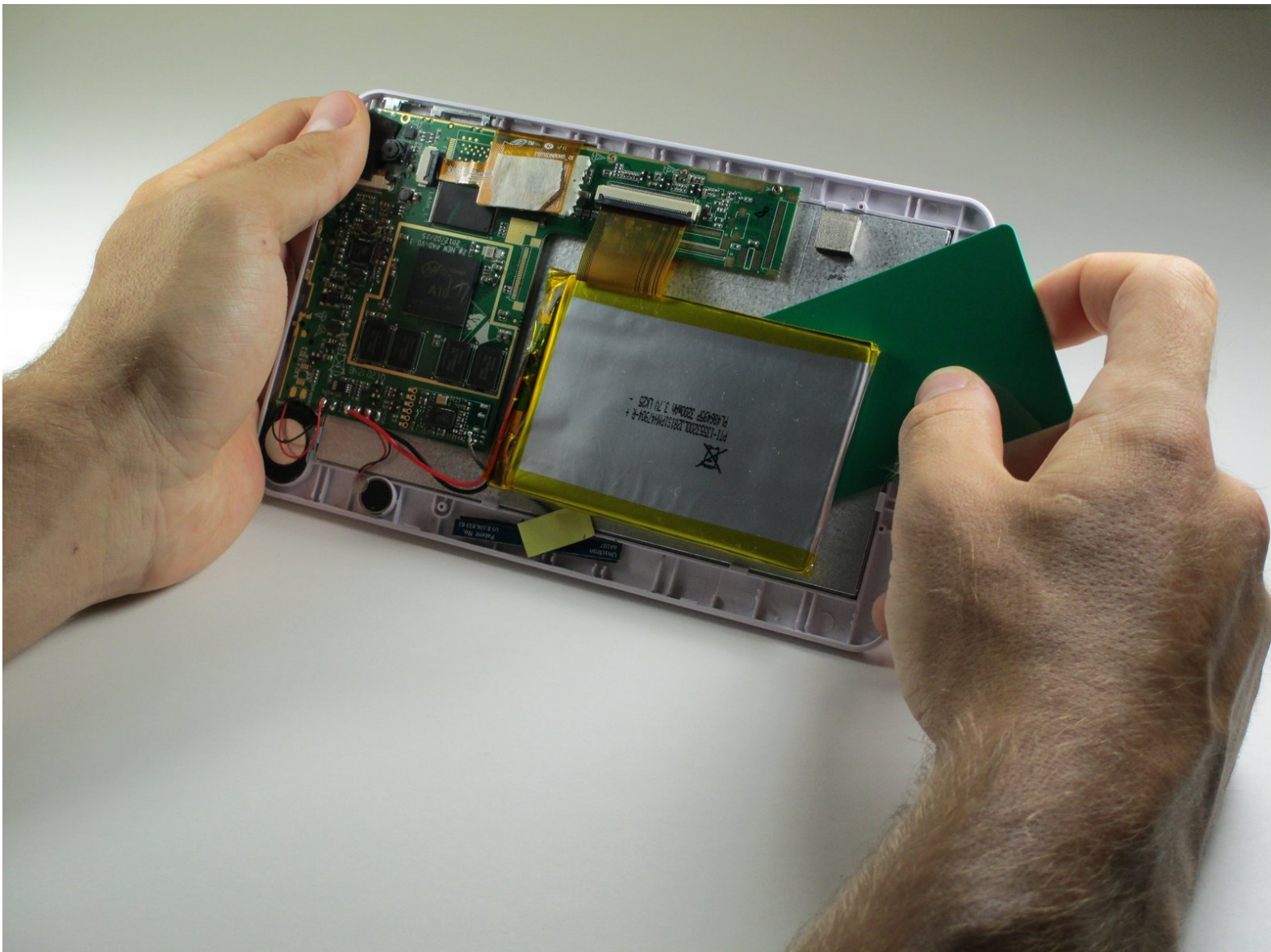




Kurio 7 Battery Replacement

This guide will show you how to remove and replace a battery for your Kurio 7 device.

Written By: Alex Powaser



INTRODUCTION

Accessing the battery is straight-forward, but the replacement requires soldering, and that can be tricky. Soldering involves melting two pieces of metal together so that they become one piece. Replacing the battery should prevent the Kurio 7 from malfunctioning.



TOOLS:

- [Plastic Cards](#) (1)
- [Soldering Workstation](#) (1)
- [Phillips #00 Screwdriver](#) (1)
- [iFixit Opening Tools](#) (1)



PARTS:

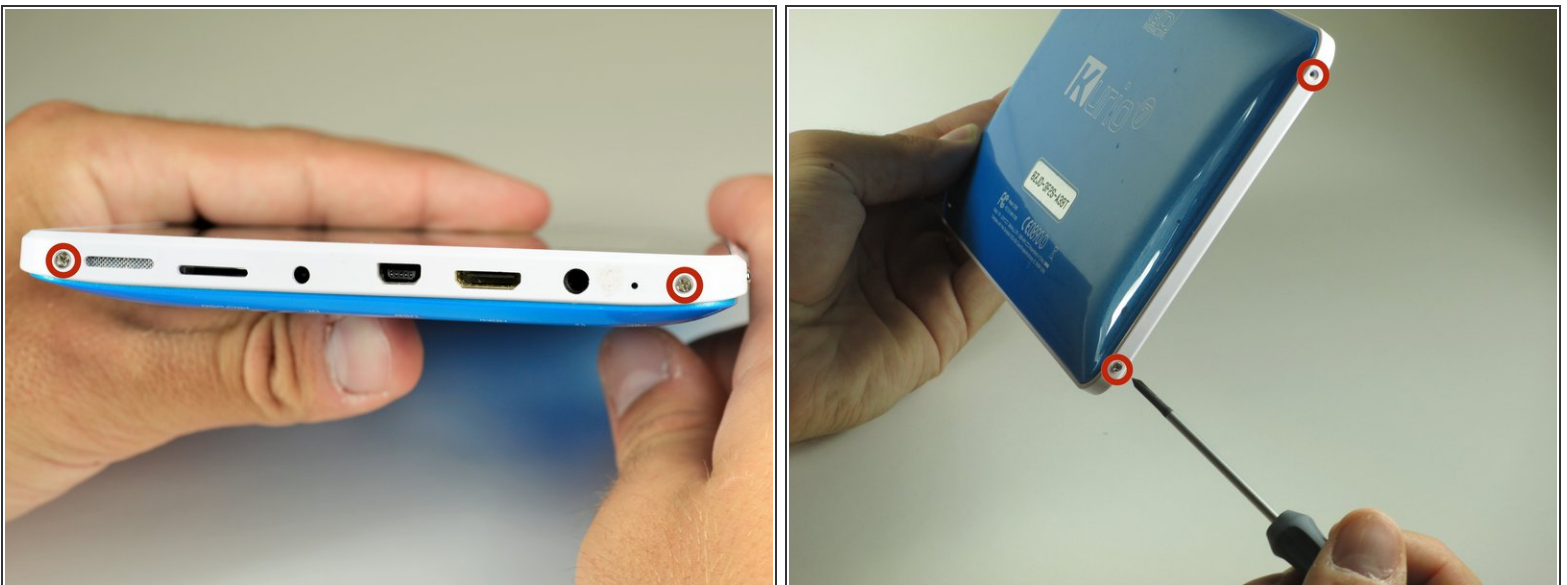
- [Kurio 7 Replacement Battery](#) (1)

Step 1 — Back Panel



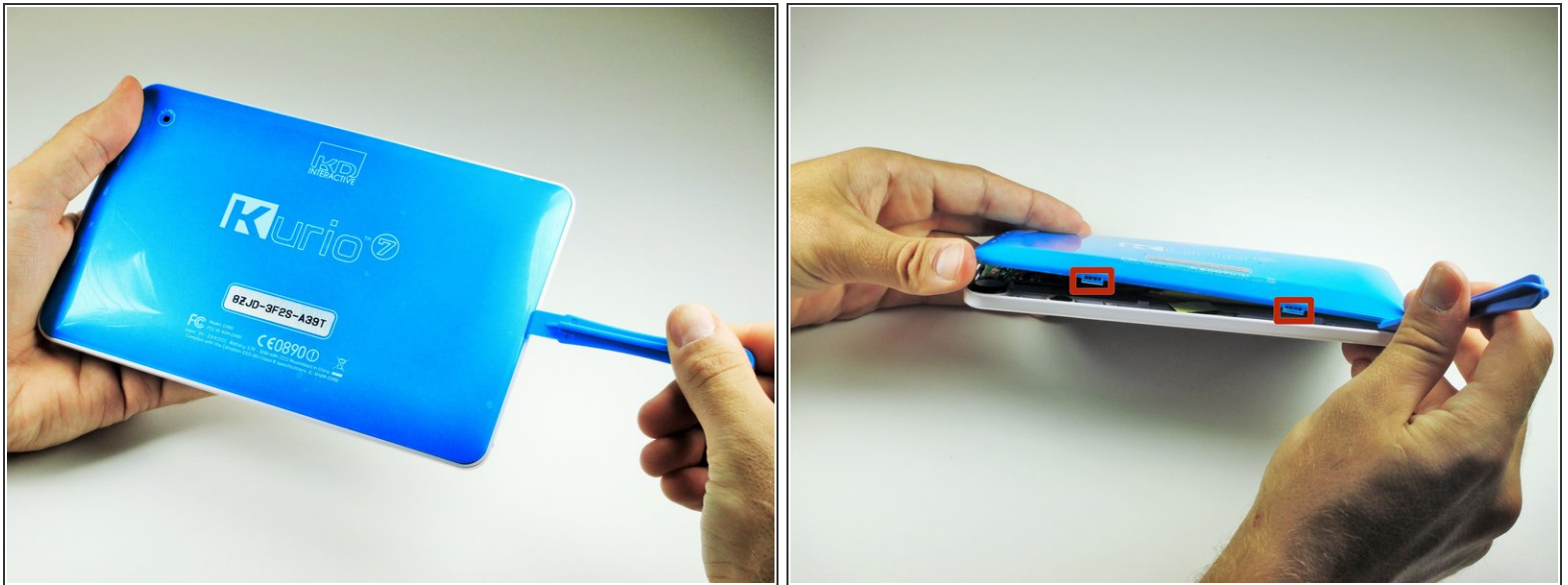
- Begin by removing the rubber cover from the Kurio 7.

Step 2



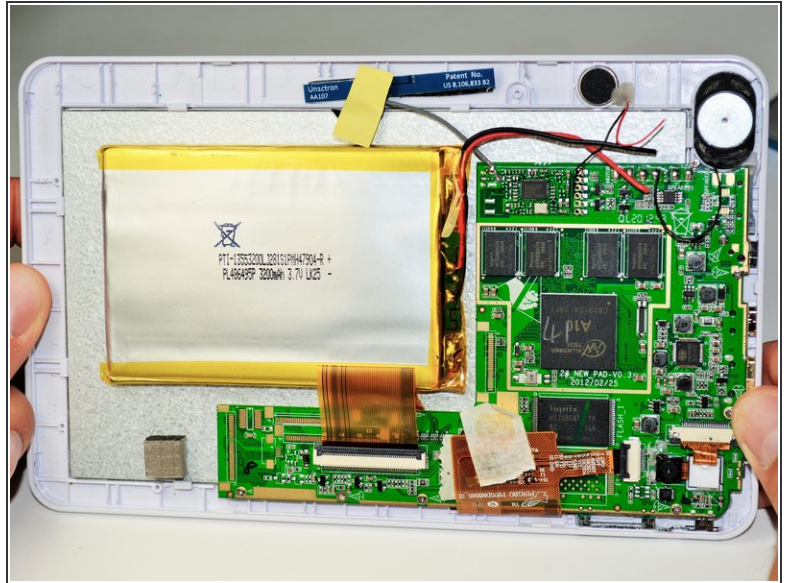
- Remove the four 30 mm Phillips #00 screws from the outer case.

Step 3



- Insert the plastic opening tool in the gap between the front cover and the back cover of the device.
 - Slide the plastic opening tool around the edge of the device. Gently pry apart the tabs that hold the front cover and the back cover together.
- ⚠ Be careful not to break off the tabs that hold the front cover and the back cover together.

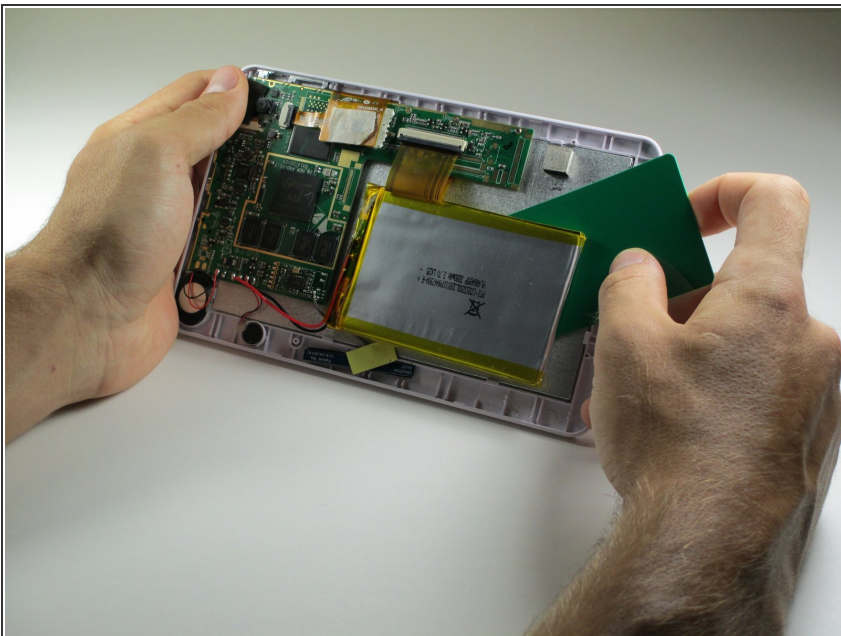
Step 4



- Once all of the tabs are removed, the back cover should come off easily.

⚠ Gently remove the back cover. There are wires inside that may get caught on the cover while removing it. These wires are soldered to their components and are difficult to reattach.

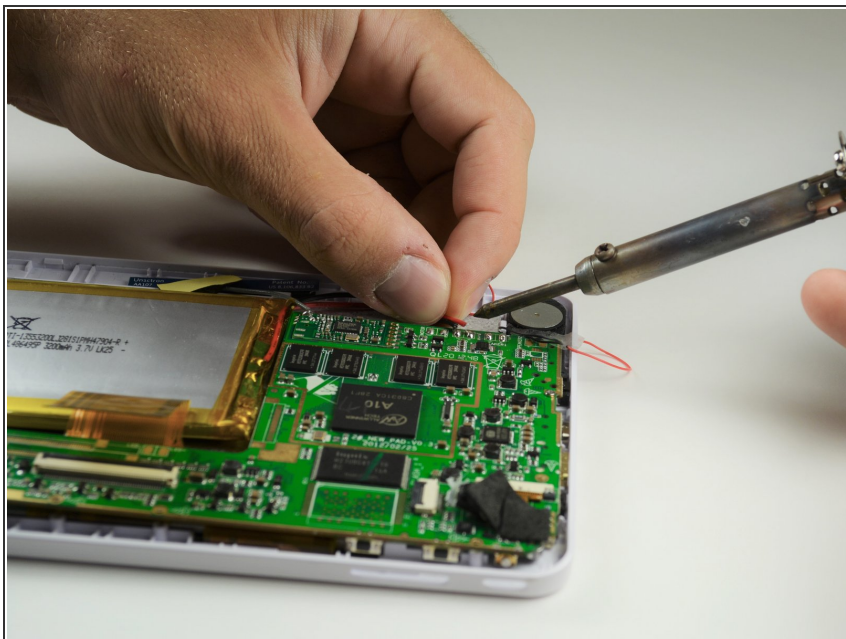
Step 5 — Battery



- Use a credit card, or other thin object, to separate the battery from the screen.

⚠ Be sure to work the card slowly and carefully in order to not damage, break, or deform the battery.

Step 6



- Desolder, or separate using the desoldering braid, the marked areas on the motherboard to remove the old battery.
- Refer to our [soldering guide](#) on how to solder and desolder.

Solder in the new battery. To reassemble your device, follow these instructions in reverse order.