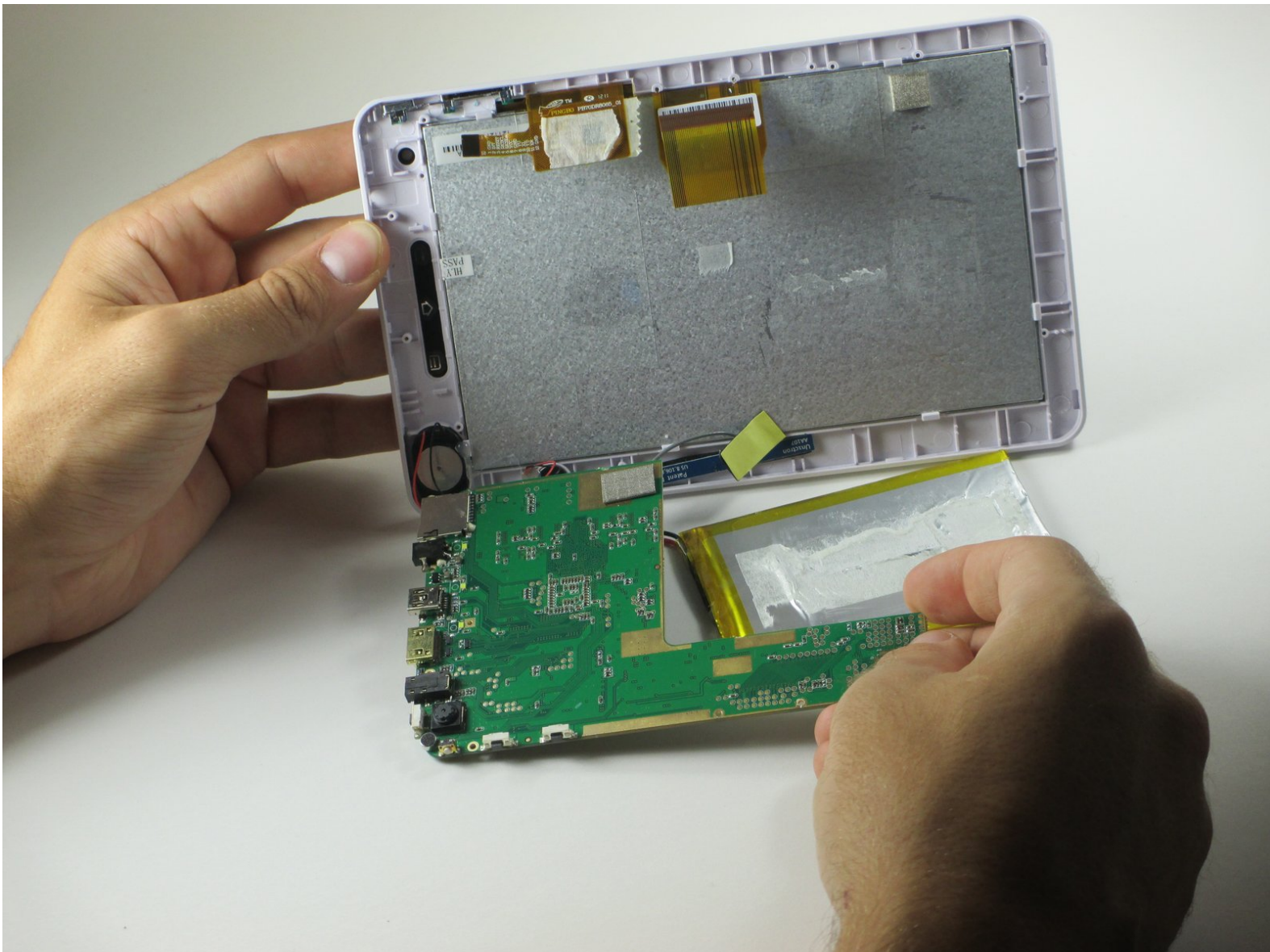




Kurio 7 Motherboard Removal Guide

This guide will show a step-by-step guide on how to remove the motherboard from a Kurio 7.

Written By: Eric Rice



INTRODUCTION

Once we have opened the Kurio 7, we may need to remove the motherboard in order to reach other components so that the Kurio 7 will work.



TOOLS:

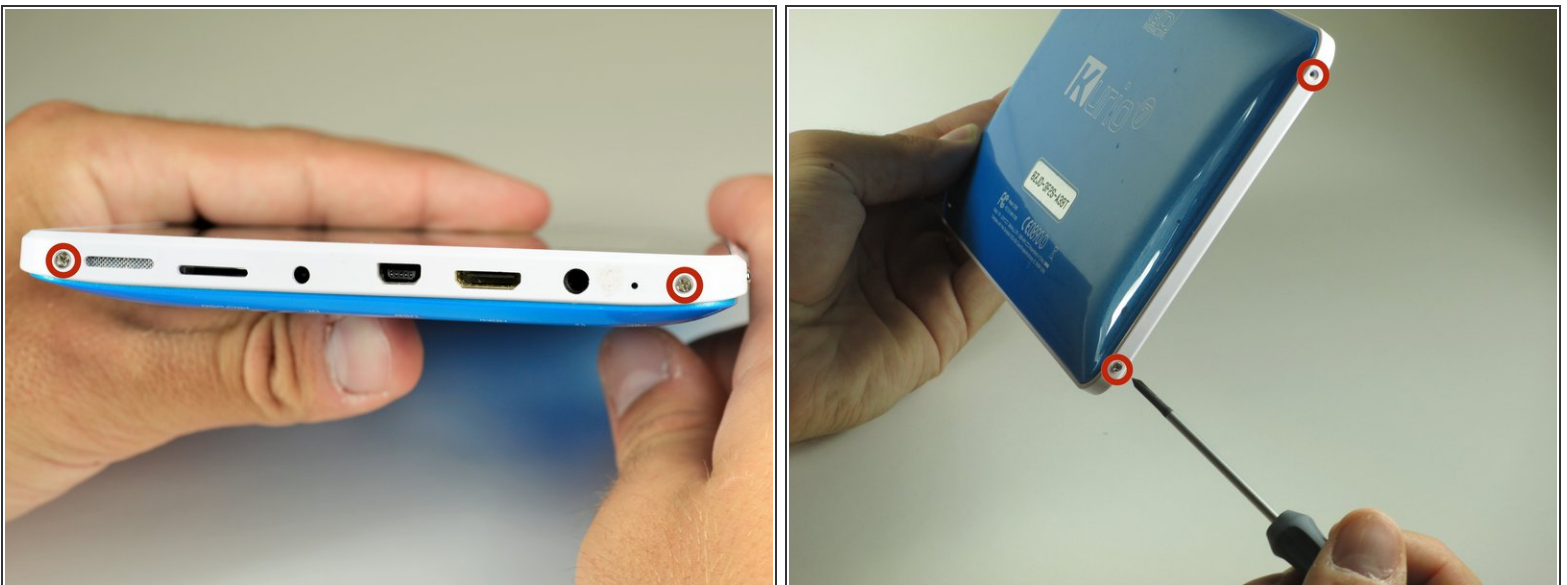
- [Phillips #00 Screwdriver](#) (1)
 - [iFixit Opening Tools](#) (1)
 - [Plastic Cards](#) (1)
-

Step 1 — Back Panel



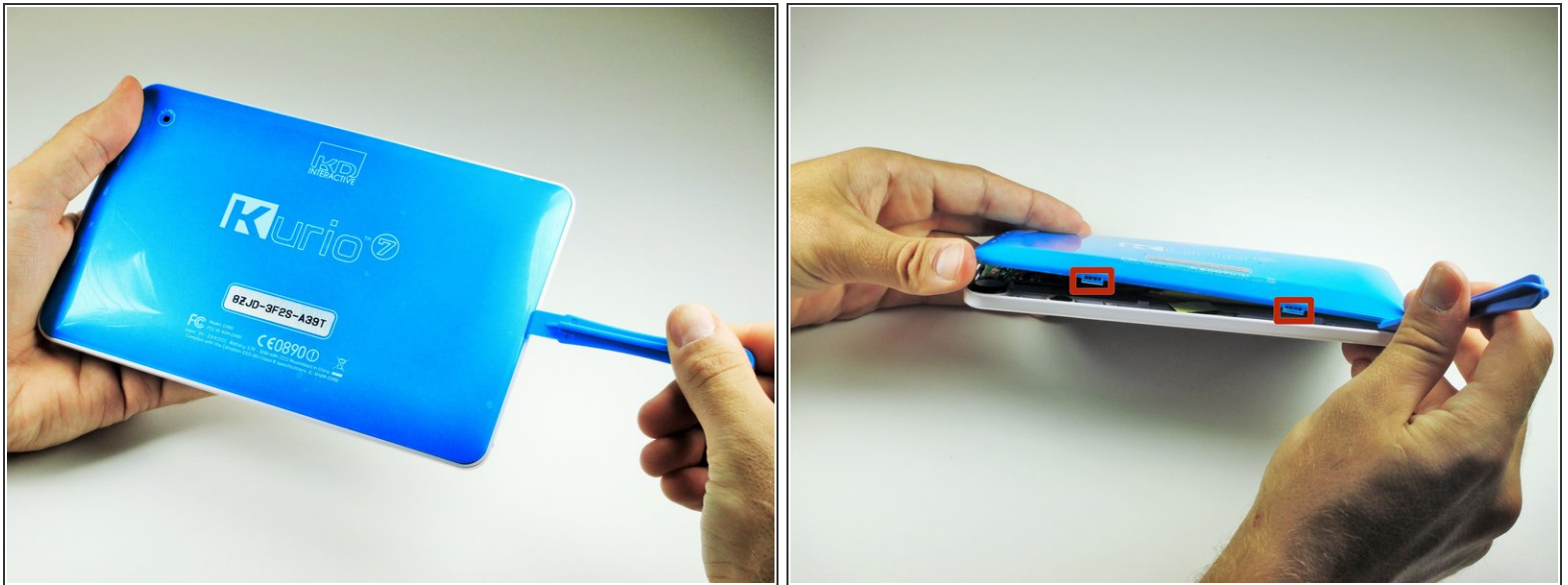
- Begin by removing the rubber cover from the Kurio 7.

Step 2



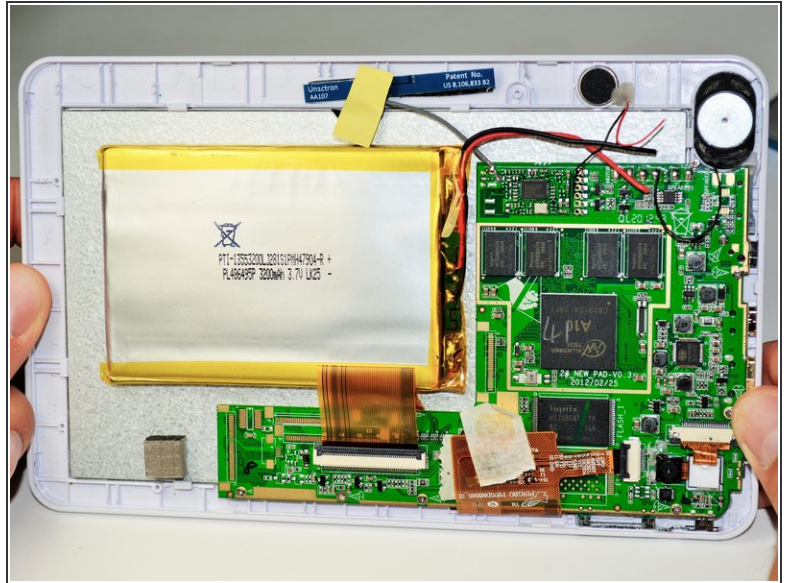
- Remove the four 30 mm Phillips #00 screws from the outer case.

Step 3



- Insert the plastic opening tool in the gap between the front cover and the back cover of the device.
 - Slide the plastic opening tool around the edge of the device. Gently pry apart the tabs that hold the front cover and the back cover together.
- ⚠ Be careful not to break off the tabs that hold the front cover and the back cover together.

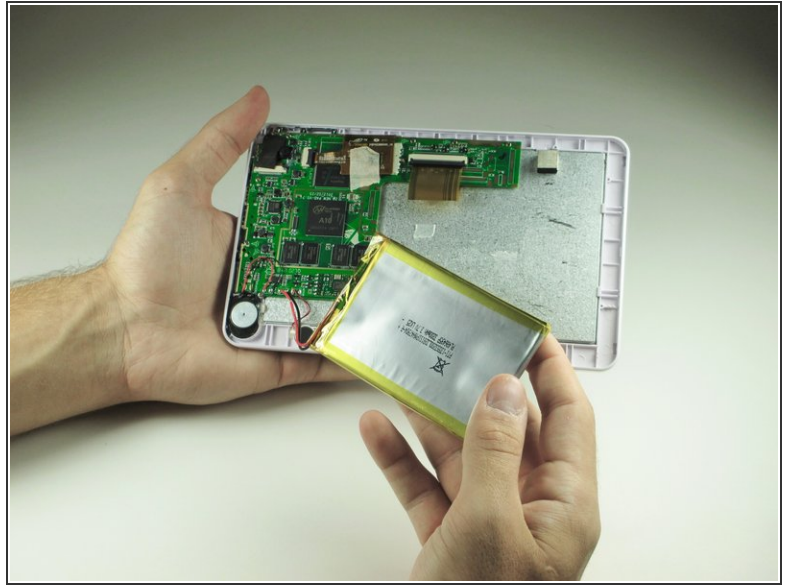
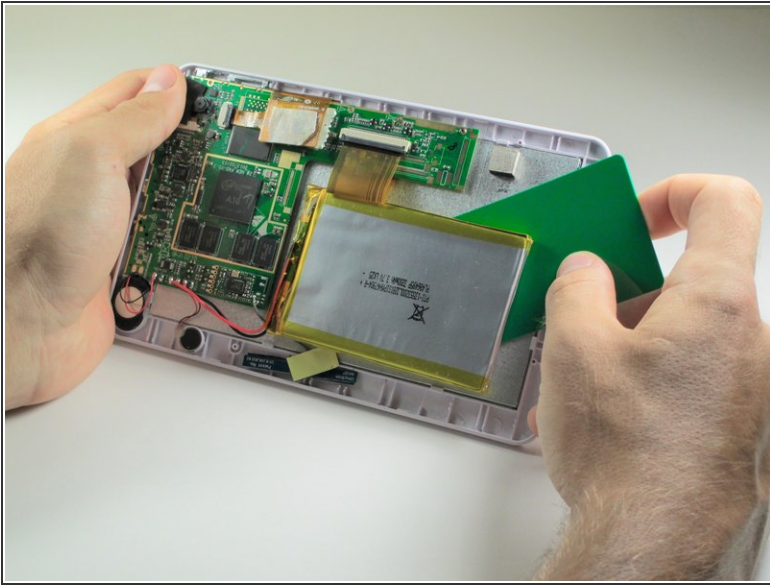
Step 4



- Once all of the tabs are removed, the back cover should come off easily.

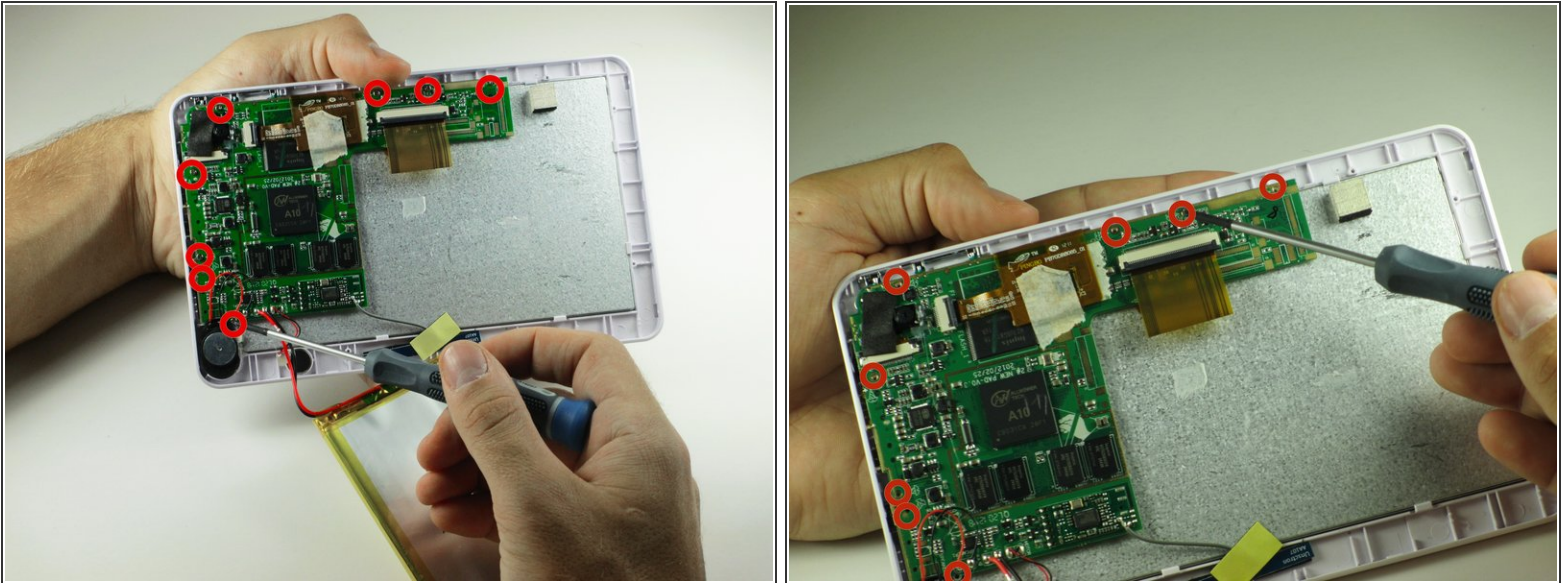
⚠ Gently remove the back cover. There are wires inside that may get caught on the cover while removing it. These wires are soldered to their components and are difficult to reattach.

Step 5 — Kurio 7 Motherboard Removal Guide



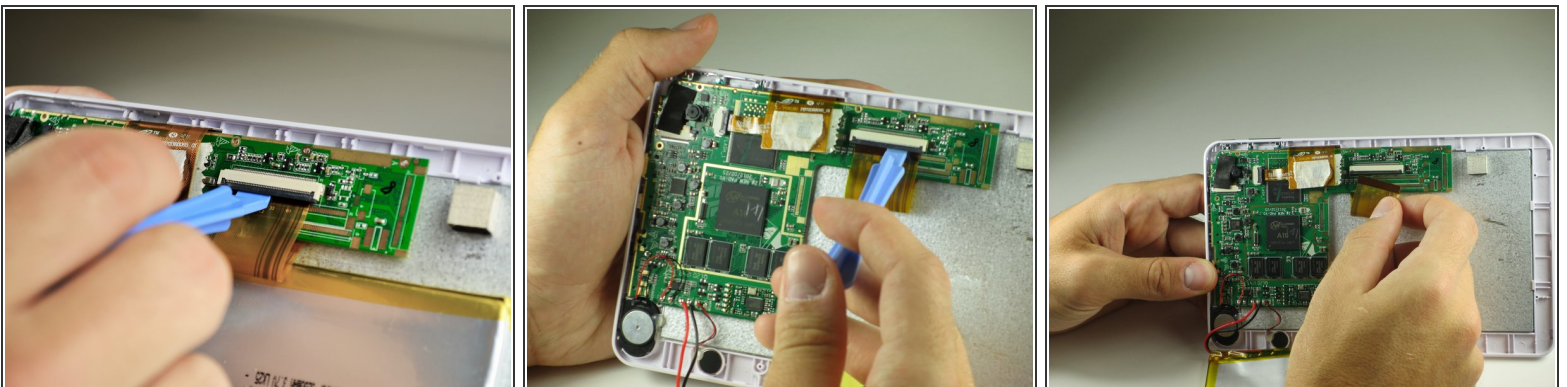
- Use a plastic credit card, or other thin object, to separate the battery from the screen.
- ⚠ Be sure to work the card carefully and slowly around in order to not damage, break, or deform the battery.
- Carefully set the battery aside.

Step 6



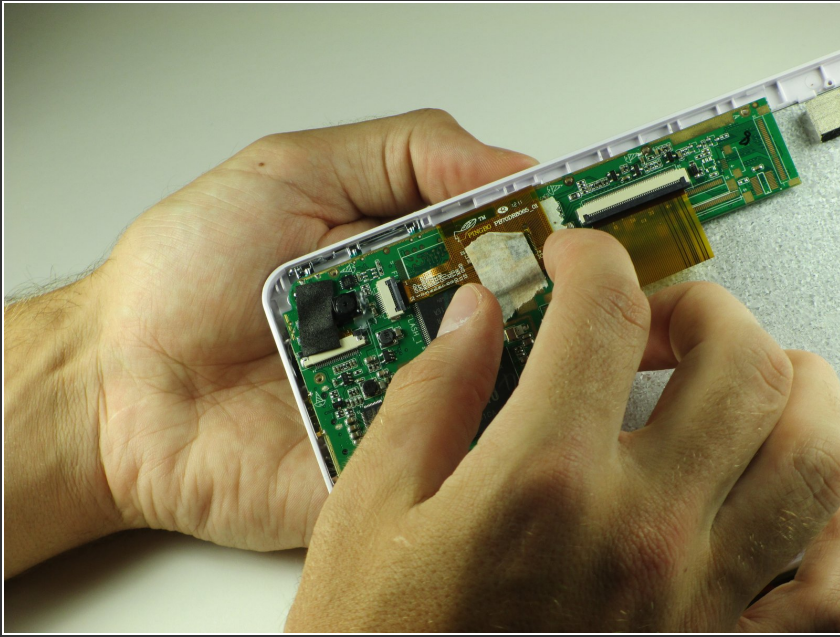
- Use a Phillips #00 screwdriver to remove the eight 40mm screws holding the motherboard in place.

Step 7




- Place the plastic opening tool on the base of the black ribbon clip and pull up, like a lever, to release the mount. This should release the clip holding the ribbon to the mount.
- Pull the ribbon out of the mount.

Step 8

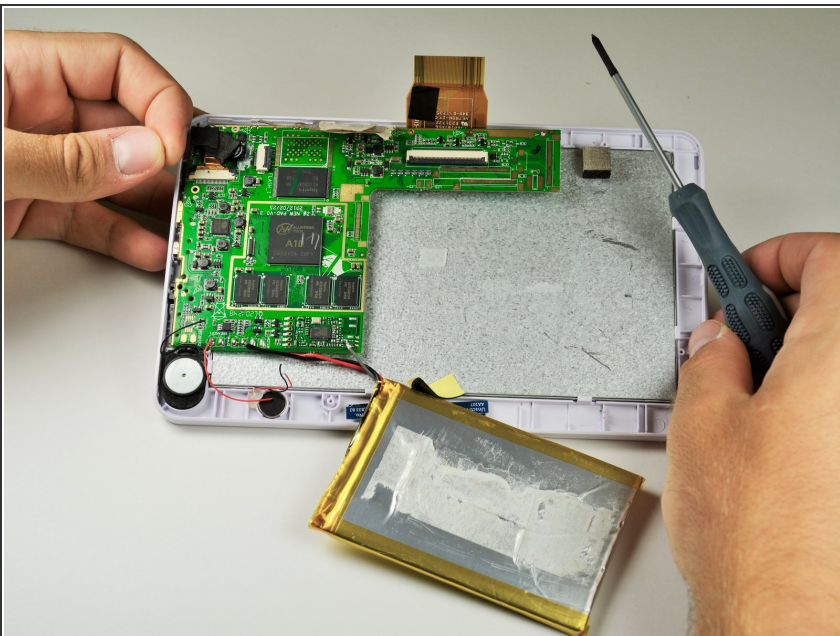


- There should be masking tape on the yellow ribbon. Pull the tape off of the motherboard and wrap it around the yellow ribbon.

 Do not pull the tape completely off the motherboard, as it is used to protect components on the ribbon.

- To remove the ribbon from the mount, follow the same steps in Step 3.

Step 9



- Pull back the ribbons and put the battery near the bottom of the Kurio.
- The motherboard is now removed so that other components can be worked on.

To reassemble your device, follow these instructions in reverse order.