



# Kurio 7 Volume/ Power Button Replacement

Follow these steps to replace a broken power/volume key located on the side of the Kurio 7.

Written By: Omri Nissan



## INTRODUCTION

If the power/volume button is stuck, replace it by following these steps. This guide requires the removal of the screen. This takes care, but the steps are easy to carry out.



### TOOLS:

- [Phillips #00 Screwdriver](#) (1)
- [Plastic Cards](#) (1)
- [Tweezers](#) (1)
- [iFixit Opening Tools](#) (1)



### PARTS:

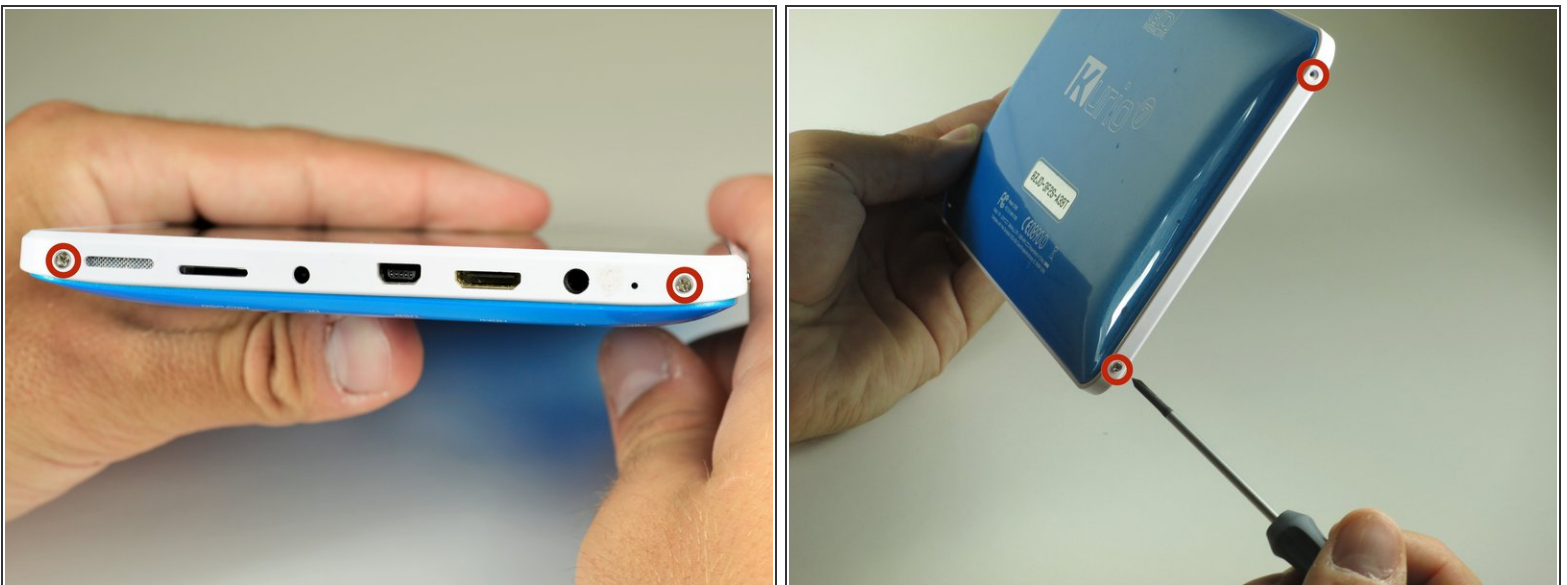
- [Kurio 7 Replacement Power Key](#) (1)

## Step 1 — Back Panel



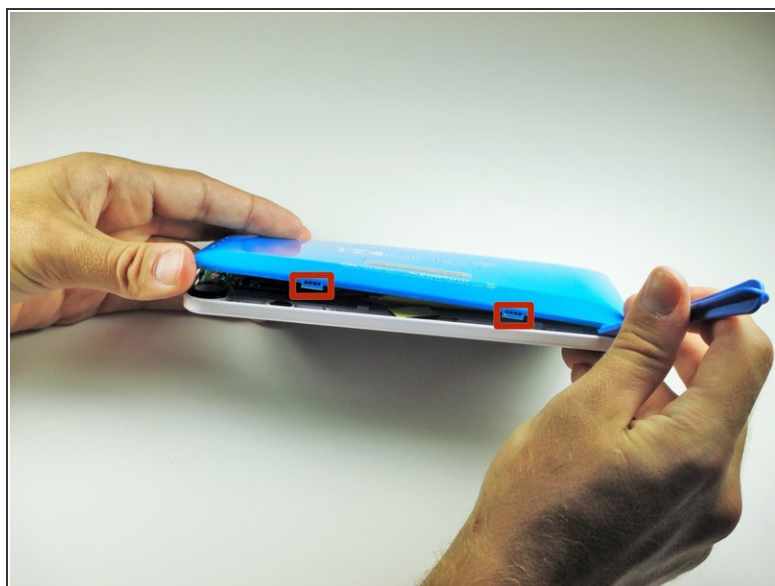
- Begin by removing the rubber cover from the Kurio 7.

## Step 2



- Remove the four 30 mm Phillips #00 screws from the outer case.

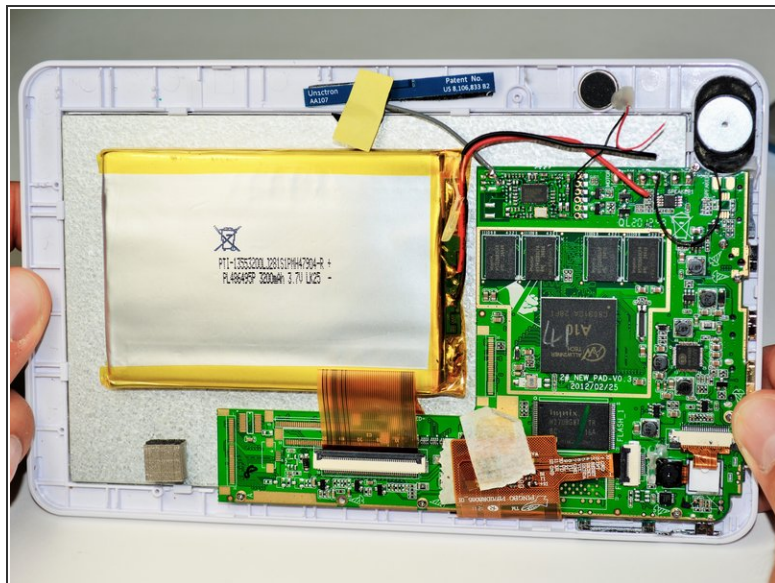
## Step 3



- Insert the plastic opening tool in the gap between the front cover and the back cover of the device.
  - Slide the plastic opening tool around the edge of the device. Gently pry apart the tabs that hold the front cover and the back cover together.
- ⚠ Be careful not to break off the tabs that hold the front cover and the back cover together.

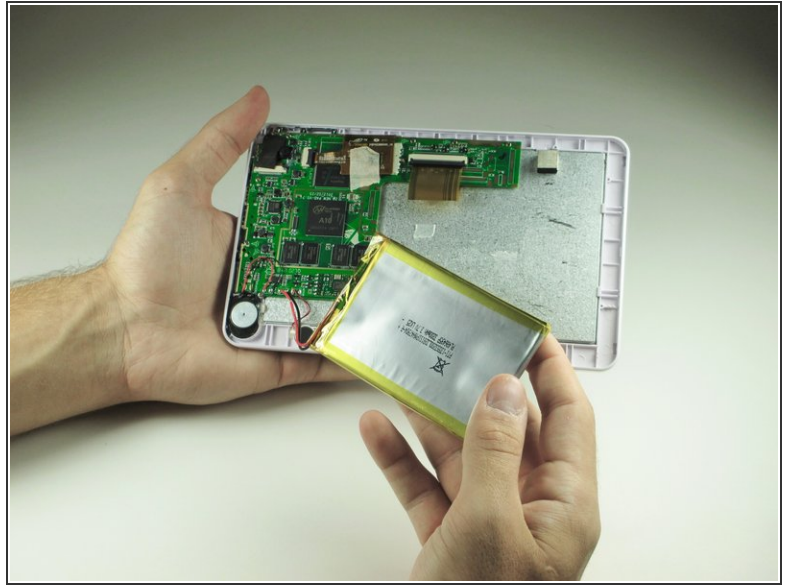
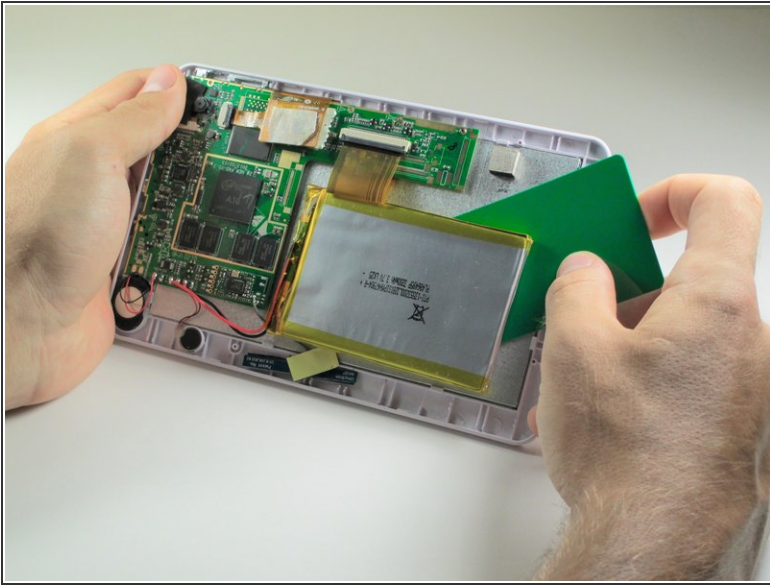


## Step 4



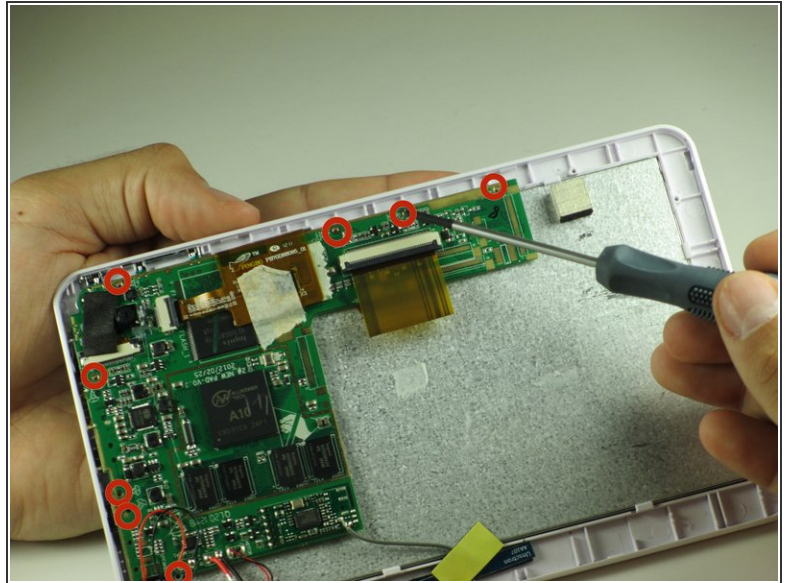
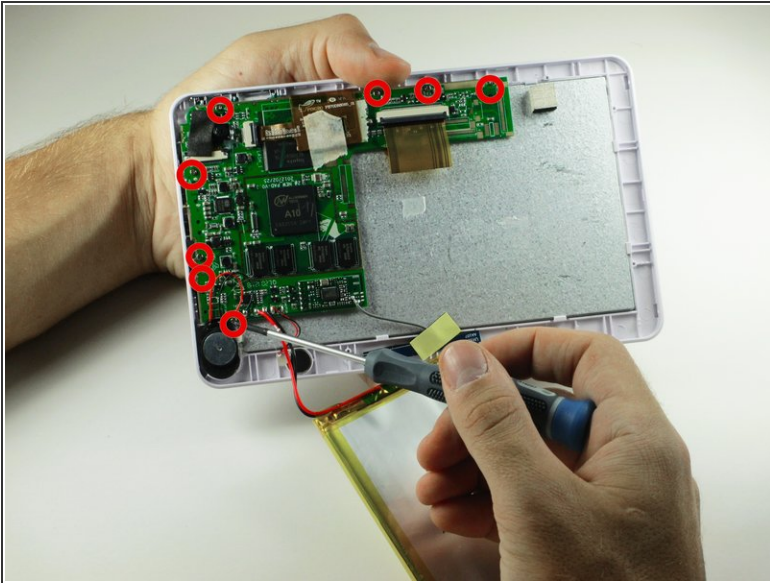
- Once all of the tabs are removed, the back cover should come off easily.
- ⚠ Gently remove the back cover. There are wires inside that may get caught on the cover while removing it. These wires are soldered to their components and are difficult to reattach.

## Step 5 — Kurio 7 Motherboard Removal Guide



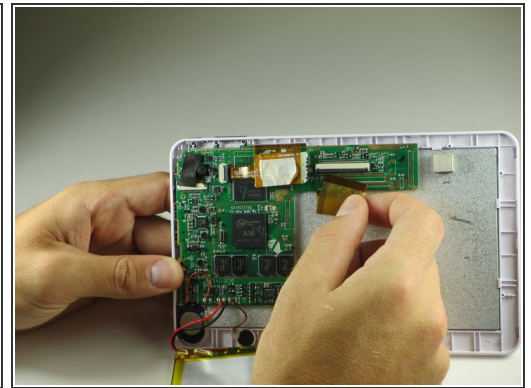
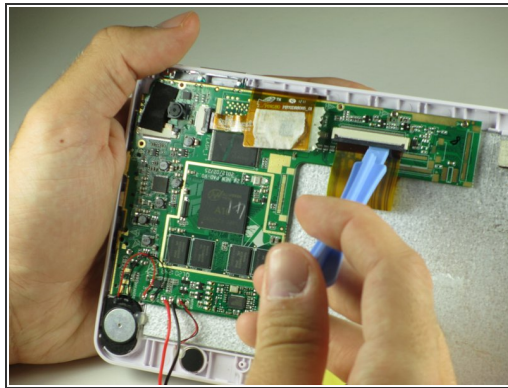
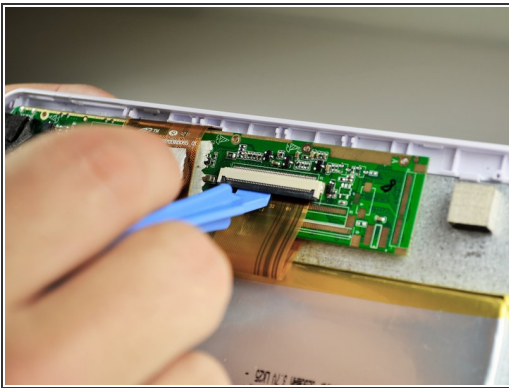
- Use a plastic credit card, or other thin object, to separate the battery from the screen.
- ⚠ Be sure to work the card carefully and slowly around in order to not damage, break, or deform the battery.
- Carefully set the battery aside.

## Step 6



- Use a Phillips #00 screwdriver to remove the eight 40mm screws holding the motherboard in place.

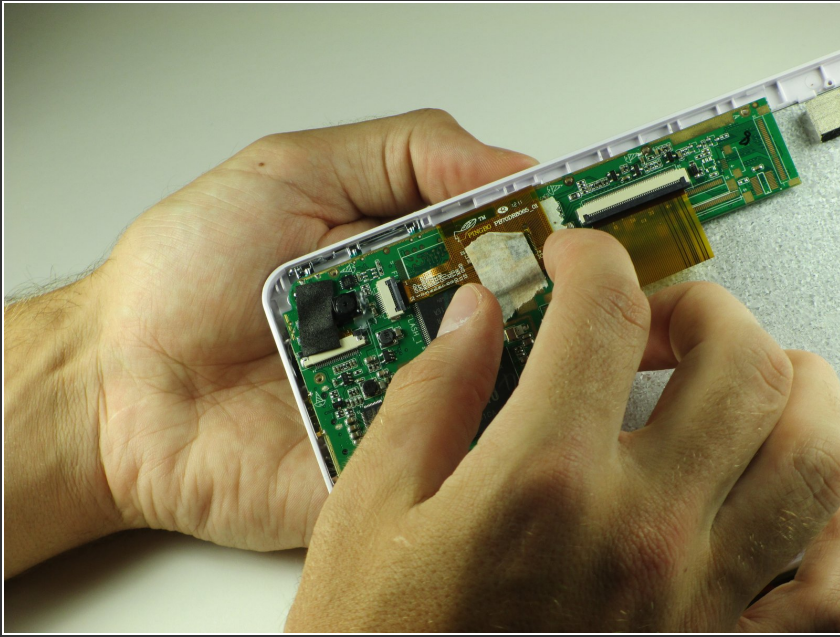
## Step 7




- Place the plastic opening tool on the base of the black ribbon clip and pull up, like a lever, to release the mount. This should release the clip holding the ribbon to the mount.
- Pull the ribbon out of the mount.



## Step 8

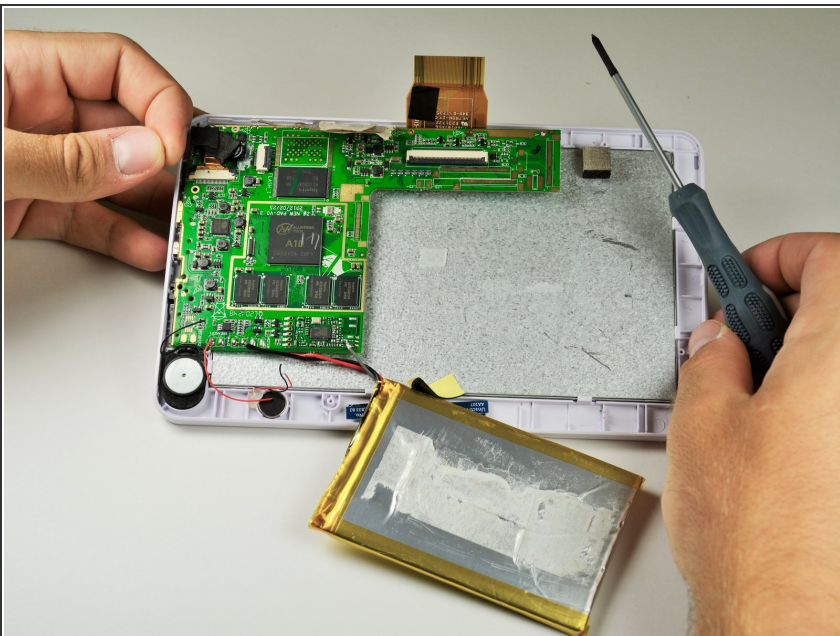


- There should be masking tape on the yellow ribbon. Pull the tape off of the motherboard and wrap it around the yellow ribbon.

 Do not pull the tape completely off the motherboard, as it is used to protect components on the ribbon.

- To remove the ribbon from the mount, follow the same steps in Step 3.

## Step 9



- Pull back the ribbons and put the battery near the bottom of the Kurio.
- The motherboard is now removed so that other components can be worked on.



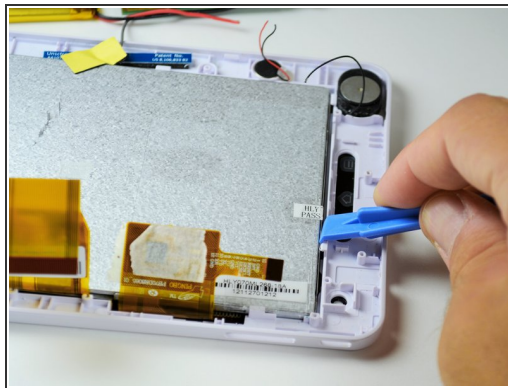
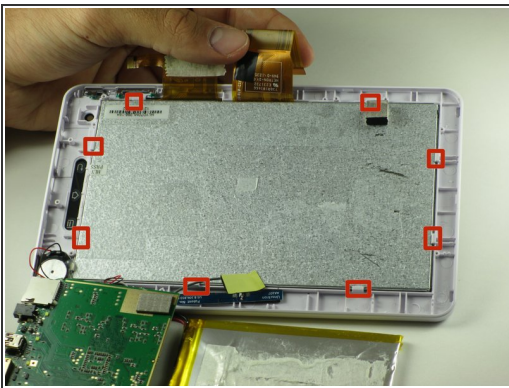
## Step 10 — Screen



- Flip motherboard down near base of device.

⚠ Be careful not to pull out any wires when moving the motherboard.

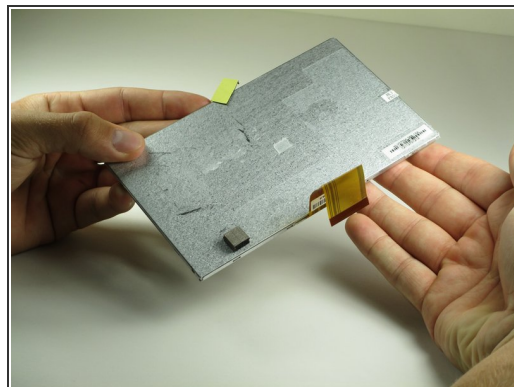
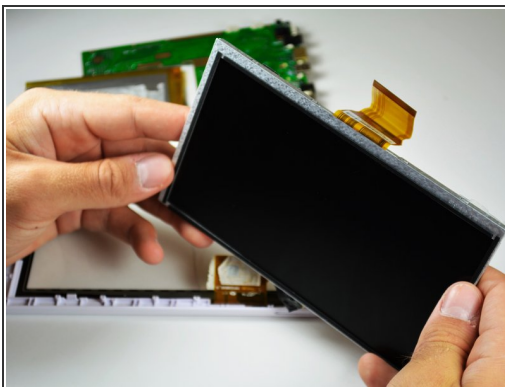
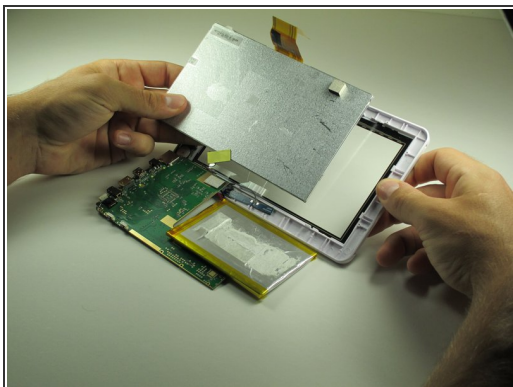
## Step 11



- This is tricky, and an extra pair of hands may help. Use the opening tool to pry the screen out from underneath the tabs holding it in place.
- Once you have created some space between the screen and the cover, slide the opening tool under the screen.
- Slide the opening tool around the outside of the screen, releasing the tabs as you go along.

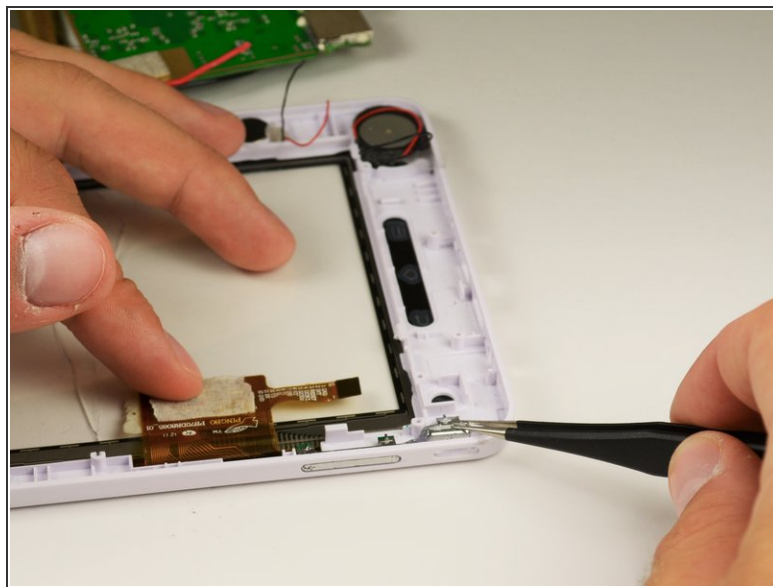
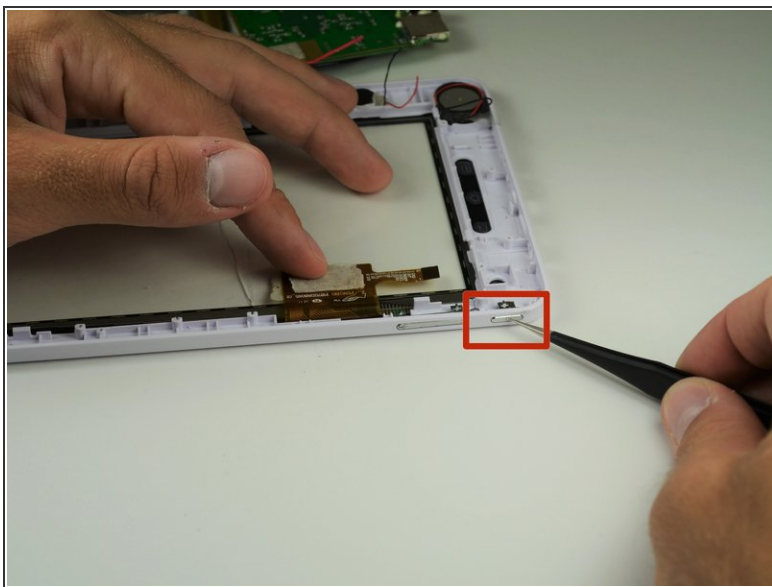
⚠ Be careful not to pull too hard on the motherboard while doing this, as there are still many wires attached to the body of the device.

## Step 12



- Pull the screen out from the casing.
- You have successfully removed the screen!

## Step 13 — Volume/ Power Button



- Locate the volume button. It will be located at the corner adjacent to the speaker.
- Pull out the detached power key.

## Step 14



- Remove volume button by using the opening tool to push inward from the outside while pulling on it from the inside using the tweezers.
- ⓘ Don't be afraid to press hard with the opening tool. Extra force may be needed to remove the volume button.

Inserting the replacement part may be tricky. Do not force the new part in, as it may break. To reassemble your device, follow these instructions in reverse order.