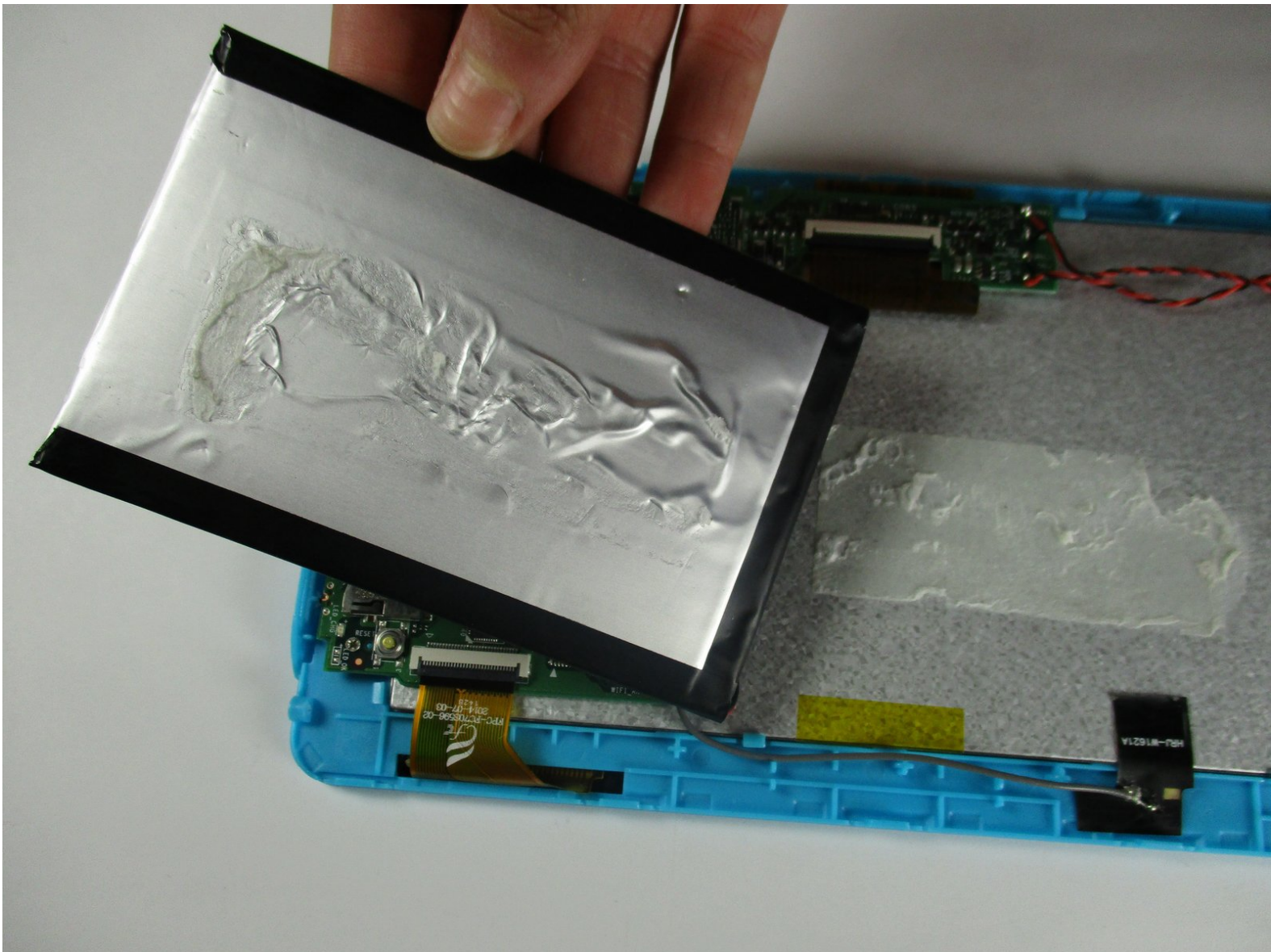




Kurio Xtreme Battery Replacement

Replace your Kurio Xtreme's faulty battery with a new battery.

Written By: Mallory Myers



INTRODUCTION

If your Kurio Xtreme is not charging or is not holding a charge, follow these steps to remove the faulty battery. Before proceeding, make sure that you have a soldering iron and know how to use it.



TOOLS:

- [Phillips #000 Screwdriver](#) (1)
 - [iFixit Opening Tools](#) (1)
 - [Soldering Iron](#) (1)
 - [Plastic Cards](#) (1)
-

Step 1 — Back Panel



- Remove the rubber case by beginning to peel from one of the top corners and continue peeling until the cover is completely removed.

Step 2



- Unscrew the four 4 mm black screws using a Phillips #000 screw driver.

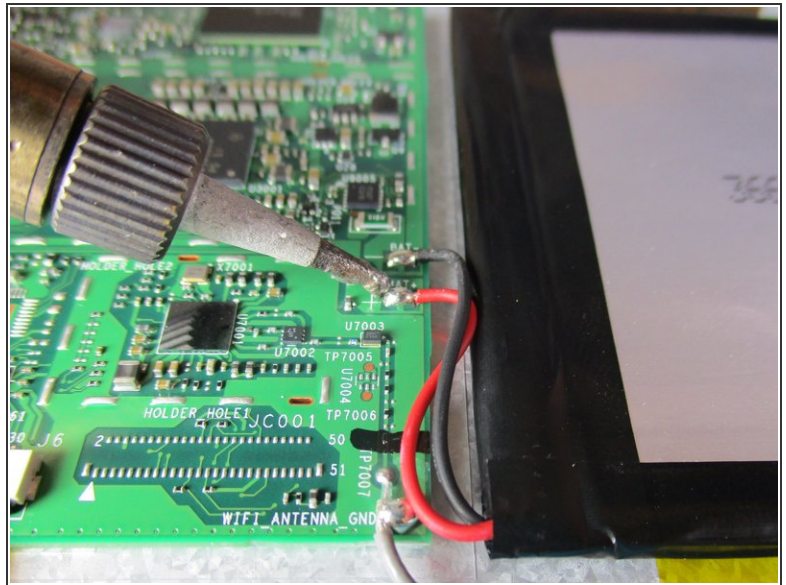
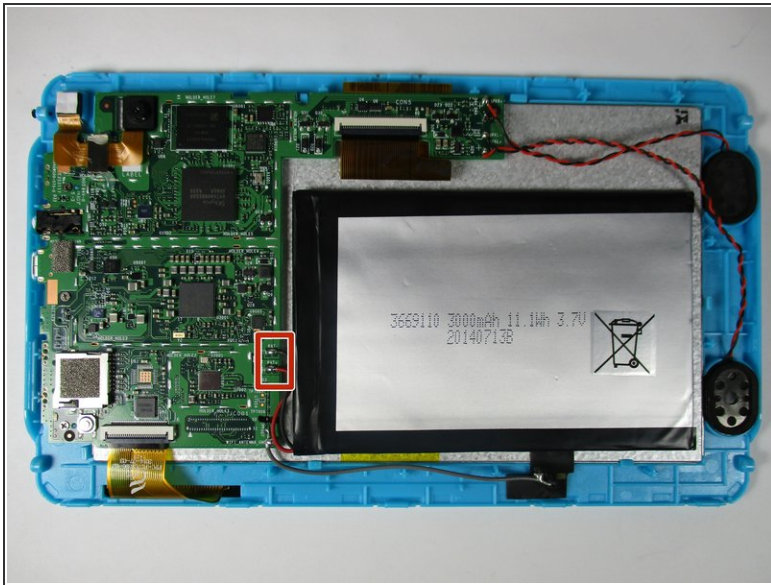
ⓘ There are two screws on each side of the device (four total).

Step 3



- Insert the plastic opening tool in between the edges of the blue front casing and black back casing.
- Slide the plastic opening tool around the perimeter of the device. This may require that you repeatedly run the opening tool up and down the edges of the device.
- ⚠ Be sure not to break any of the plastic clamps along the edges of the device when removing the back cover.
- Carefully lift the back panel off of the rest of the device.

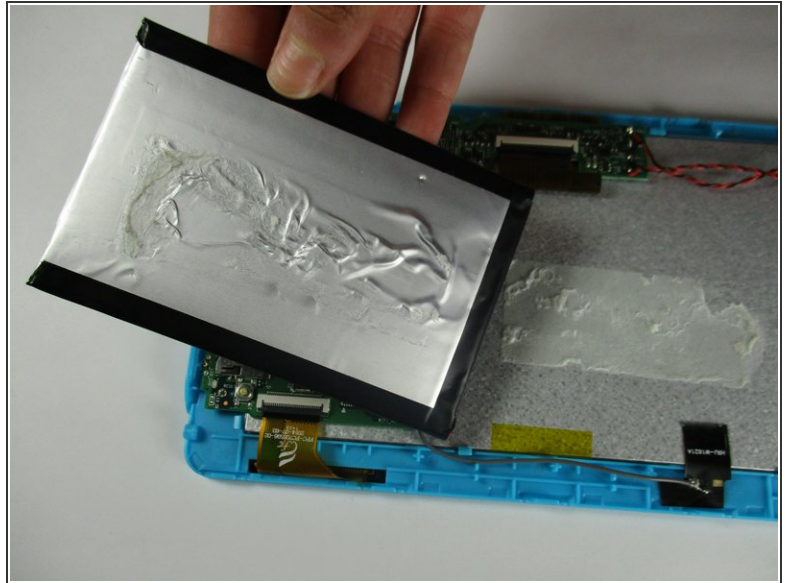
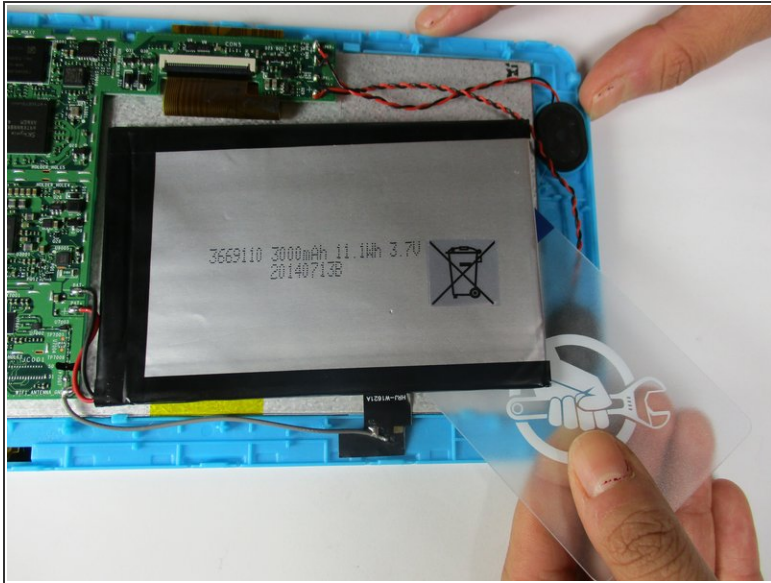
Step 4 — Battery



- Disconnect the black and red wires from the motherboard by [soldering](#) the ends that are connected to the motherboard.

⚠ The soldering iron gets very hot and may injure you if exposed to your skin.

Step 5



- Slide iFixit's Plastic Card tool or a credit card under the battery to remove the glue that is holding it in place.
- ⓘ Be patient and gentle. The glue is strong and may take up to 30 seconds to remove.
- Carefully lift the battery out of the device.

To reassemble your device, follow these instructions in reverse order.