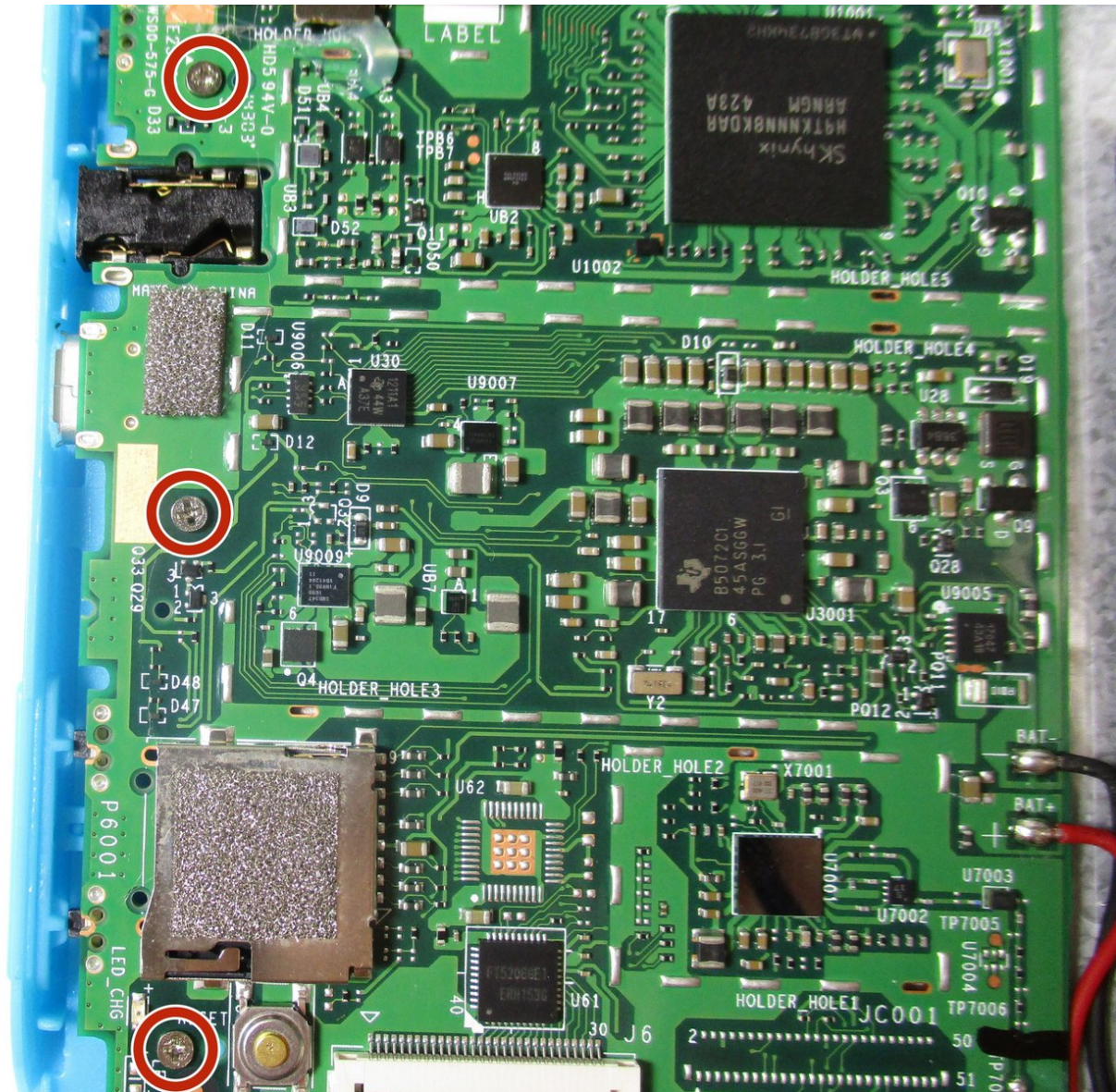




# Kurio Xtreme Power/Volume Buttons Replacement

Replace the faulty power and/or volume buttons on your Kurio Xtreme.

Written By: Mallory Myers



# INTRODUCTION

If the power and/or volume buttons on your Kurio Xtreme are no longer working, follow this guide to replace them. Before you begin, make sure that you have a soldering iron and know how to use it.



## TOOLS:

- [Phillips #000 Screwdriver](#) (1)
- [iFixit Opening Tools](#) (1)
- [Soldering Workstation](#) (1)

## Step 1 — Back Panel



- Remove the rubber case by beginning to peel from one of the top corners and continue peeling until the cover is completely removed.

## Step 2



- Unscrew the four 4 mm black screws using a Phillips #000 screw driver.

ⓘ There are two screws on each side of the device (four total).

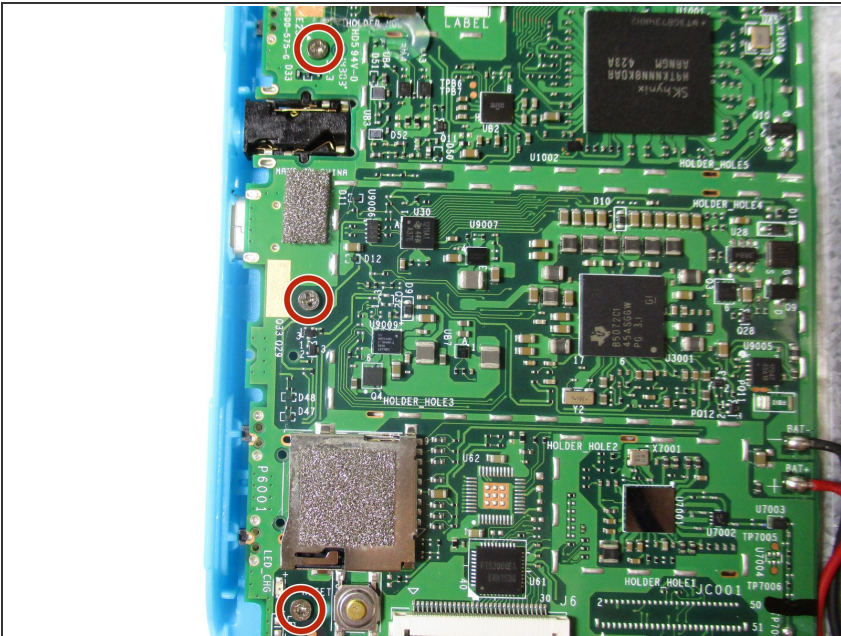


### Step 3



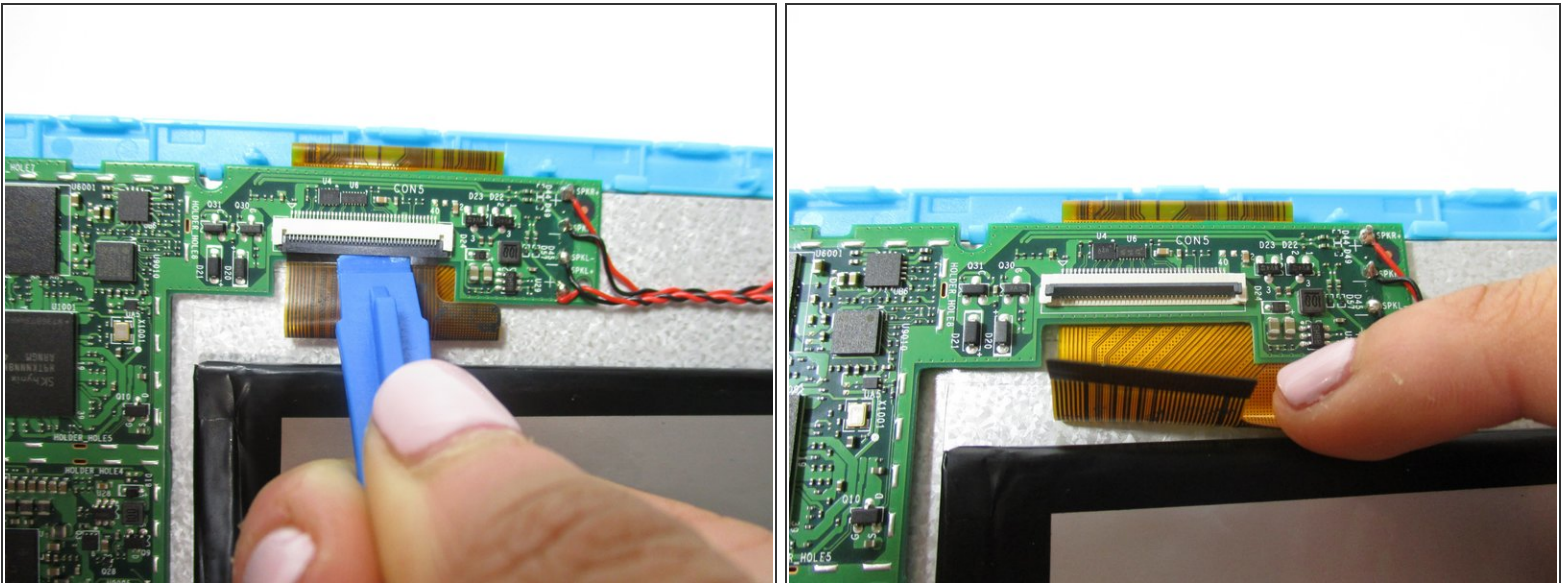
- Insert the plastic opening tool in between the edges of the blue front casing and black back casing.
- Slide the plastic opening tool around the perimeter of the device. This may require that you repeatedly run the opening tool up and down the edges of the device.
- ⚠ Be sure not to break any of the plastic clamps along the edges of the device when removing the back cover.
- Carefully lift the back panel off of the rest of the device.

### Step 4 — Power/Volume Buttons



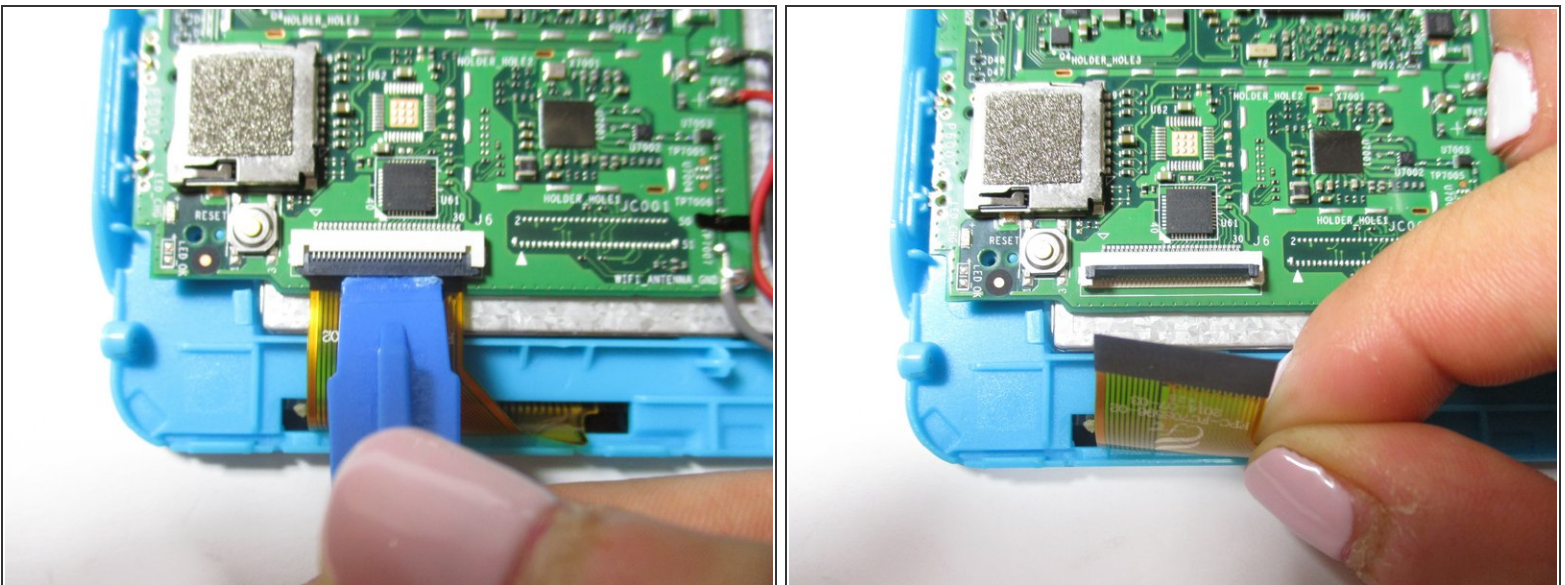
- Remove the three 4 mm screws on the motherboard with a Phillips #000 screwdriver.

## Step 5



- Remove the orange data display ribbon wire above the battery by prying open the ZIF connector with the plastic opening tool.

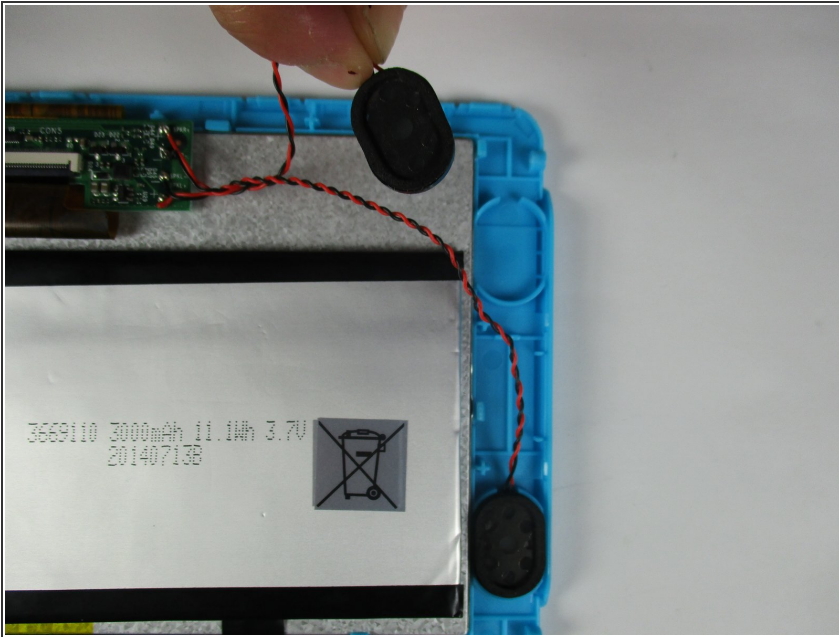
## Step 6



- Remove the orange data display ribbon wire to the left of the battery by prying open the ZIF connector with the plastic opening tool.



## Step 7



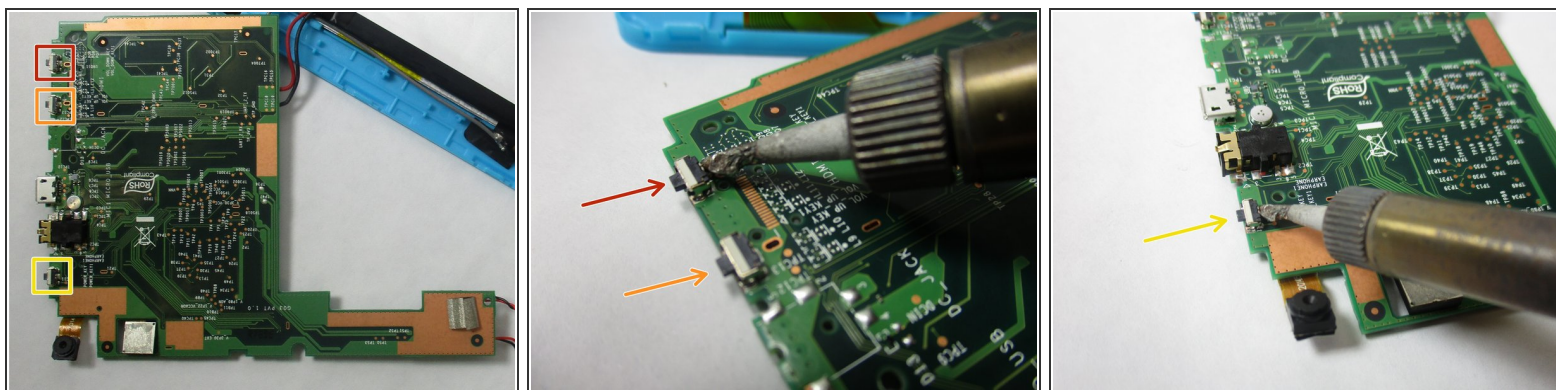
- Remove the speakers out of the plastic molds by lifting up the black and red wires.
- ⚠ Be careful not to disconnect the black and red wires from the motherboard.

## Step 8



- Remove the motherboard by lifting it out of the casing. Set it upside down below the casing.
- ⓘ The motherboard will still be connected to the battery and the speakers.

## Step 9



- Remove the volume buttons and/or power button by soldering them at their bases.
  - Volume down
  - Volume up
  - Power

To reassemble your device, follow these instructions in reverse order.