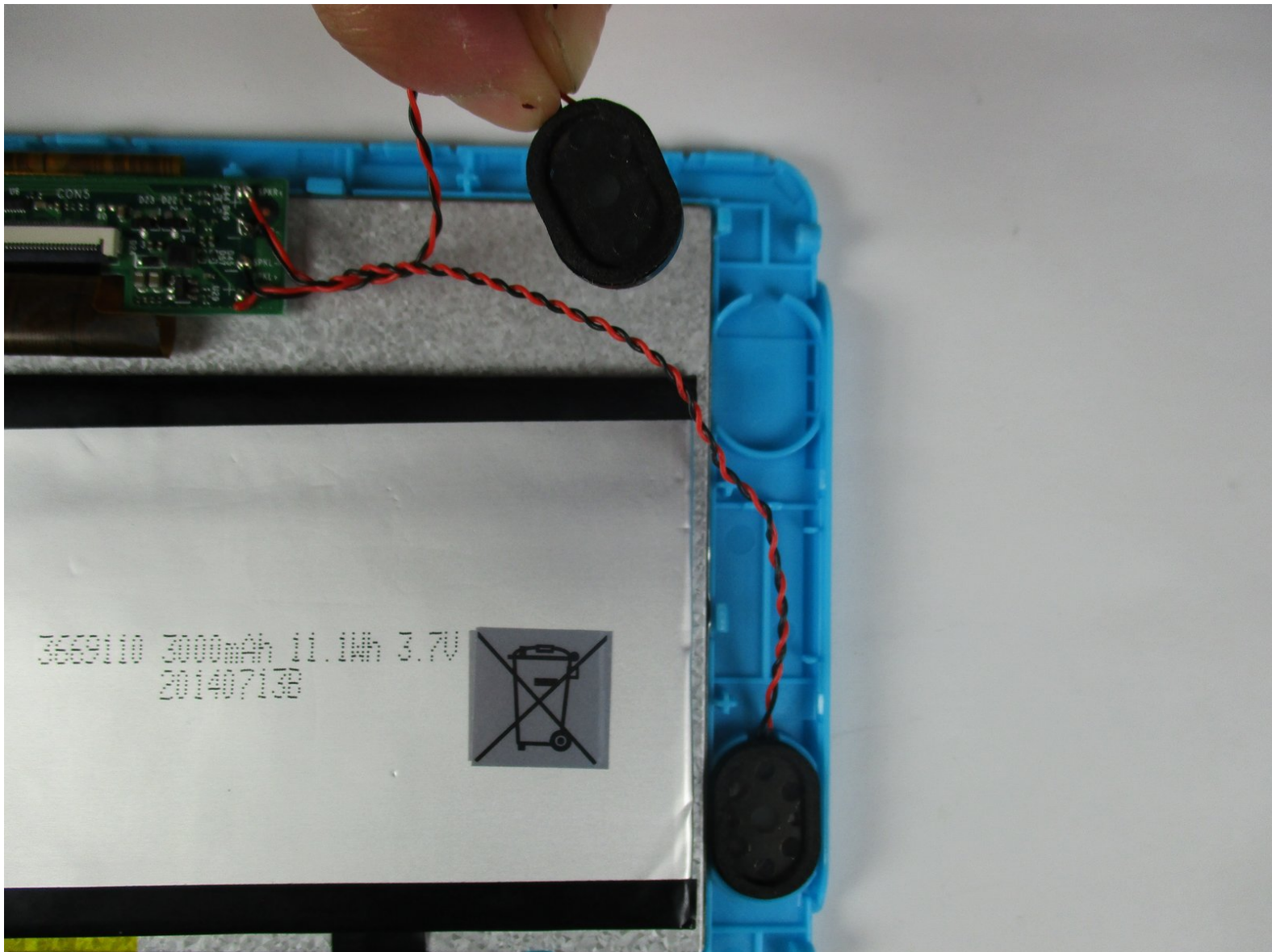




# Kurio Xtreme Speaker Replacement

Replace your Kurio Xtreme's faulty speakers with new speakers.

Written By: Mallory Myers



---

## INTRODUCTION

If your Kurio Xtreme's speakers are not working properly, follow these steps to replace the faulty speakers with new speakers. Before proceeding, make sure that you have a soldering iron and know how to use it.



### TOOLS:

- [Phillips #000 Screwdriver](#) (1)
  - [iFixit Opening Tools](#) (1)
  - [Soldering Iron](#) (1)
-

## Step 1 — Back Panel



- Remove the rubber case by beginning to peel from one of the top corners and continue peeling until the cover is completely removed.

## Step 2



- Unscrew the four 4 mm black screws using a Phillips #000 screw driver.

ⓘ There are two screws on each side of the device (four total).

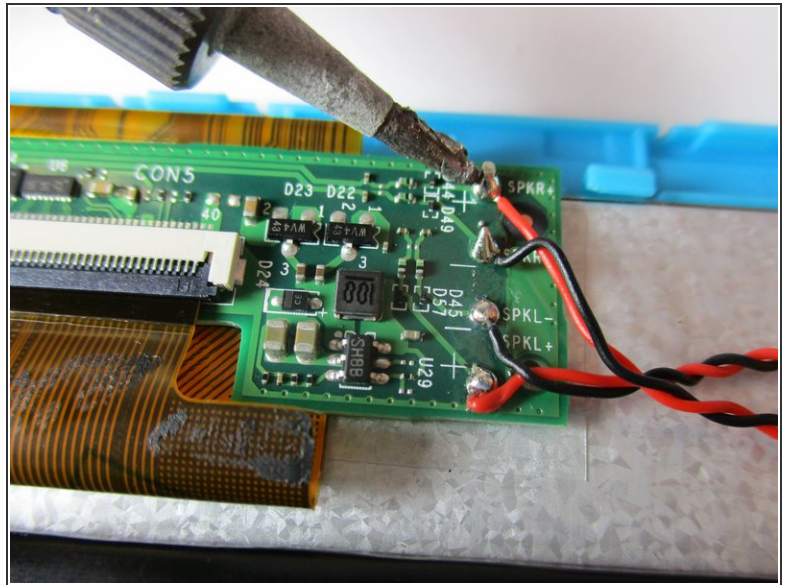
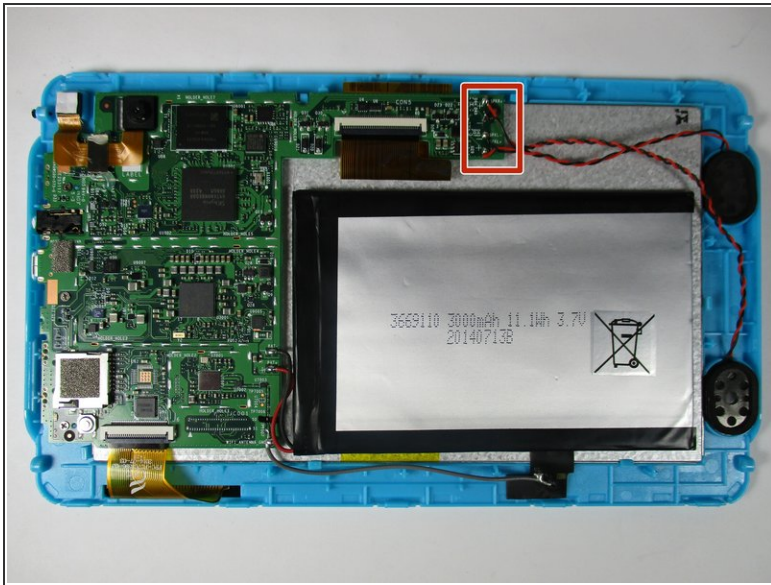
### Step 3



- Insert the plastic opening tool in between the edges of the blue front casing and black back casing.
- Slide the plastic opening tool around the perimeter of the device. This may require that you repeatedly run the opening tool up and down the edges of the device.
- ⚠ Be sure not to break any of the plastic clamps along the edges of the device when removing the back cover.
- Carefully lift the back panel off of the rest of the device.



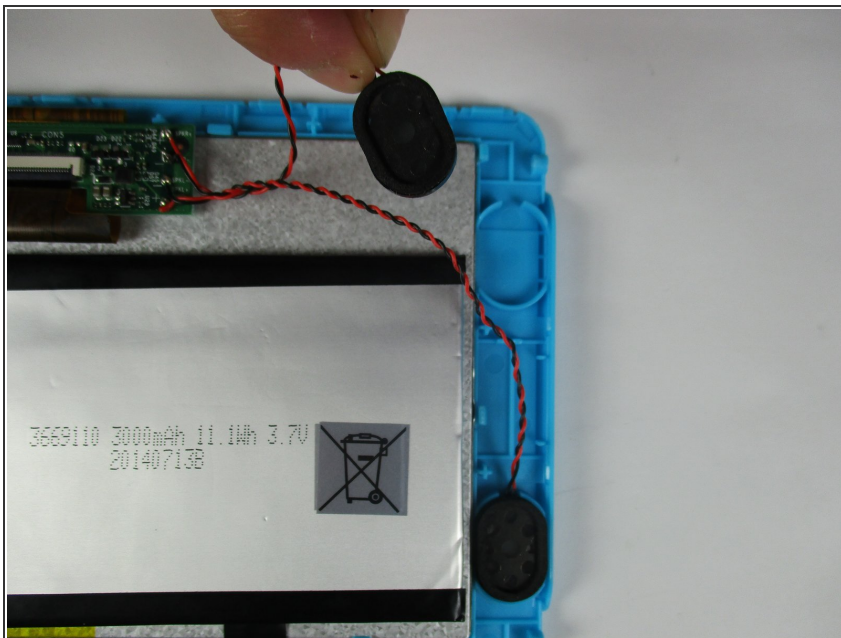
## Step 4 — Speaker



- Disconnect the 2 sets of black and red wires (4 wires total) from the motherboard by soldering the ends connected to the motherboard.

⚠ The soldering iron gets very hot and may injure you if exposed to your skin.

## Step 5



- Carefully remove the speakers out of the plastic molds by lifting up the black and red wires.

To reassemble your device, follow these instructions in reverse order.