



# Kyocera DuraForce PRO Battery Replacement

In this guide I will be showing you how to take the phone apart to replace an old battery.

Written By: Mike Rote





## TOOLS:

- [iFixit Opening Tools](#) (1)
  - [Tweezers](#) (1)
  - [Phillips #000 Screwdriver](#) (1)
  - [iFixit Opening Picks set of 6](#) (1)
-

## Step 1 — Remove Back Cover.



 Make sure to power down phone before starting.

- Insert the opening pick/tool into the slit between the case and the body of the phone. It can be easier to insert near buttons. Make your way around the case as you use the pick/tool to lift the cover from the body.
- Once completely loose lift the cover off and set aside.
- This is a good opportunity to blow out any dust that has accumulated.

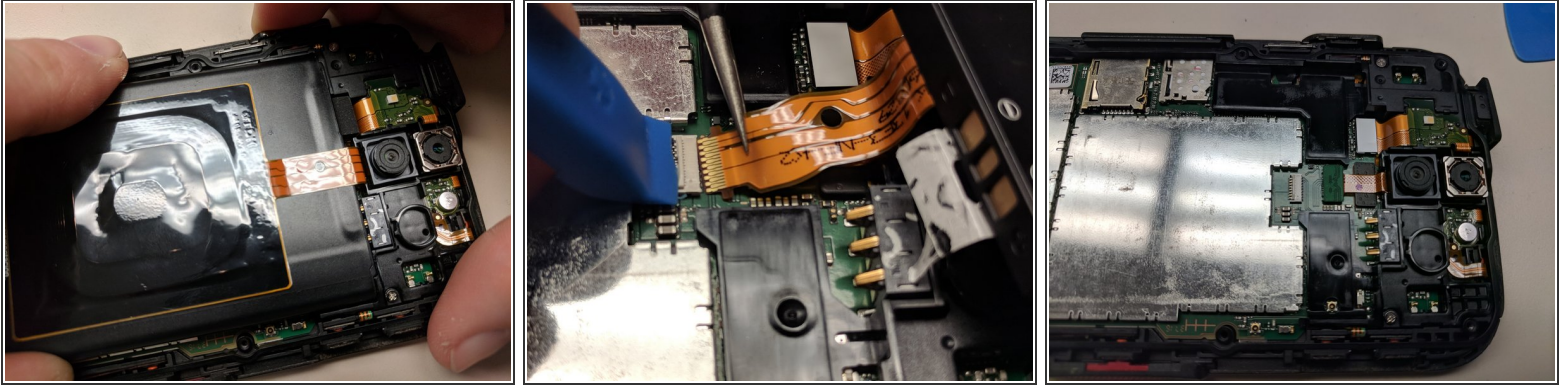




## Step 2 — Remove Waterproof Cover



- Using your Phillips 000 remove the eight screws found in the waterproof cover.
  - ⓘ Make sure to keep your screws in a small bowl or cup to keep them from rolling off the table.
- Once the screws are removed, take your pick tool and make your way around the case as you use the pick/tool to lift the waterproof cover from the body.
- Once loosen by the pick carefully remove the cover from the base and set aside.
  - ⓘ Be careful of the buttons and port covers that will loosen and come off. If they come completely off set them aside and remember which location/direction they go.
  - ⓘ Also be careful of the orange seal that is embedded in the waterproof cover. If it comes loose you can push back in place with tweezers.

### Step 3 — Remove Battery



-  Highly recommend making sure you are grounded before removing the battery. You will be handling areas that could cause damage if you accidentally create a static discharge.
-  You will notice a disclaimer on the battery that states that if you remove the battery you void the warranty. Make sure your warranty has expired before performing this repair.
- Starting near the lower area of the phone, carefully press the battery towards the top of the phone and then lift up.
  - Lift the battery up and over the top of the phone to expose the battery cable and port.
  - Using tweezers and opening tool, flip the lock on the port and carefully pull out the cable.

To reassemble your device, follow these instructions in reverse order.