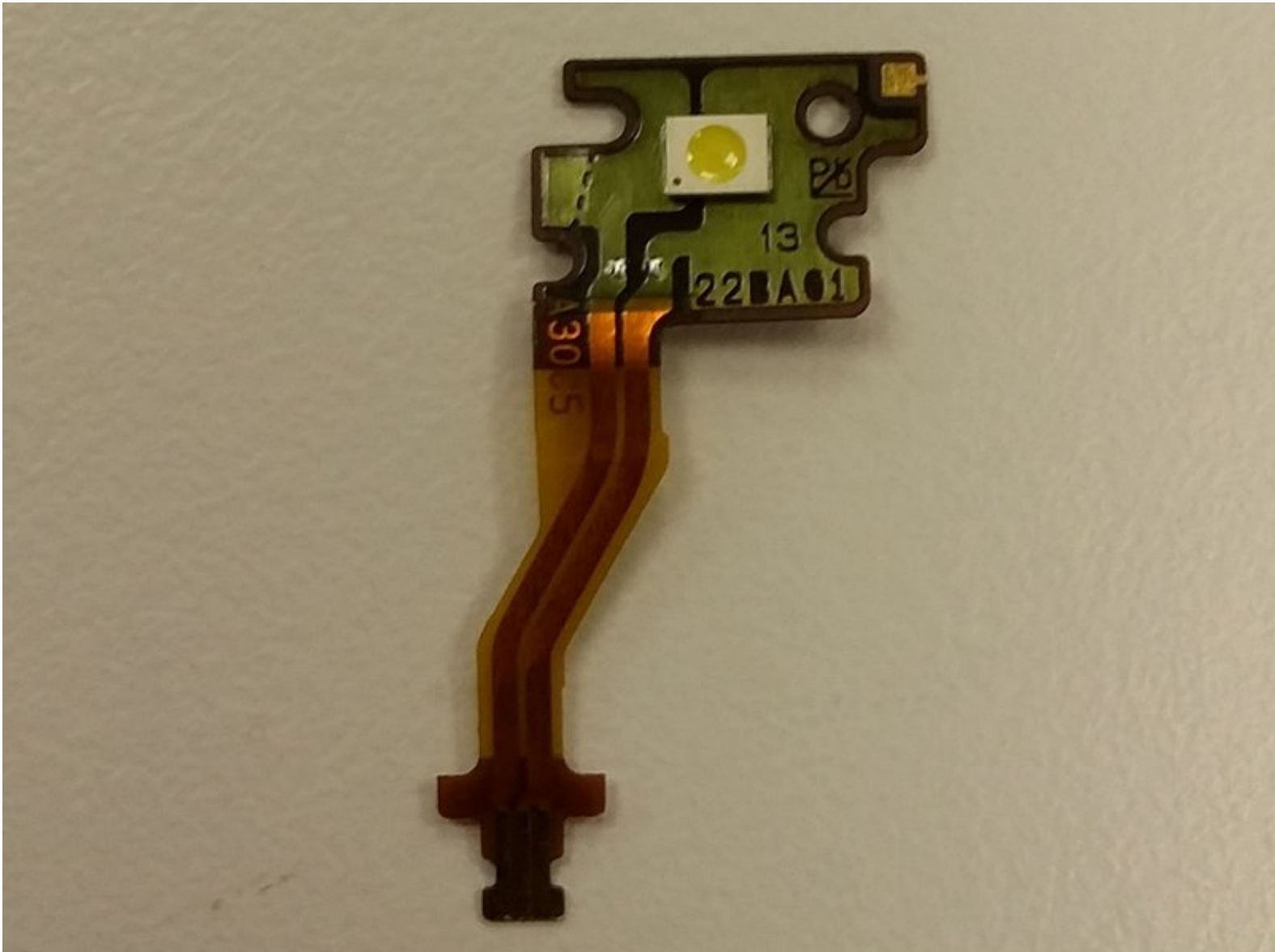




Kyocera Event Camera Flash Chip Replacement

This guide details the removal of the camera flash chip from the Kyocera Event.

Written By: Derek Grandstaff



INTRODUCTION

This guide describes the step by step process involved in removing the flash chip of the Kyocera Event phone.



TOOLS:

- [Tweezers](#) (1)
 - [Pry Bar](#) (1)
 - [Tri-wing Screwdriver](#) (1)
-

Step 1 — Battery



- Locate the small notch on the bottom right side of the phone.
 - To remove the cover, hook your thumb or fingernail into the slot. Then, gently lift the cover up and off.
- i** The back cover may flex slightly as you remove it. This is normal, but avoid applying excessive force.

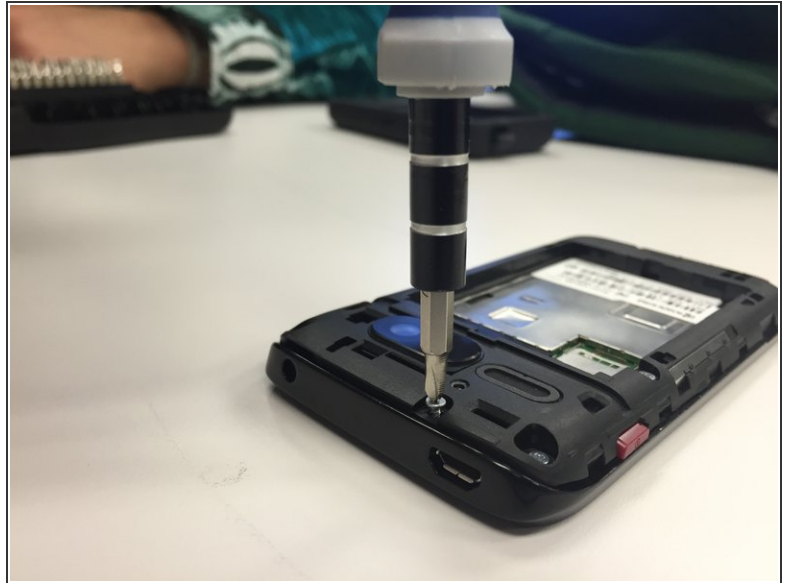
Step 2



- Locate the small notch below the battery. You may see a white plastic notch sticking out of this space; if so, grasp that tab to pull the battery out of its compartment. If you do not see a white plastic tab, then place your fingernail in the notch and pull upward to release the battery from its compartment.

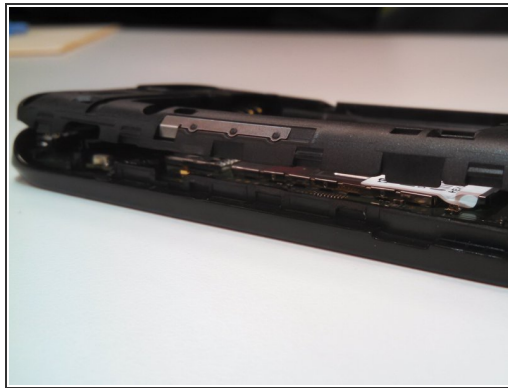
i The plastic prying tool can be used to help remove the battery.

Step 3 — Remove the screws.



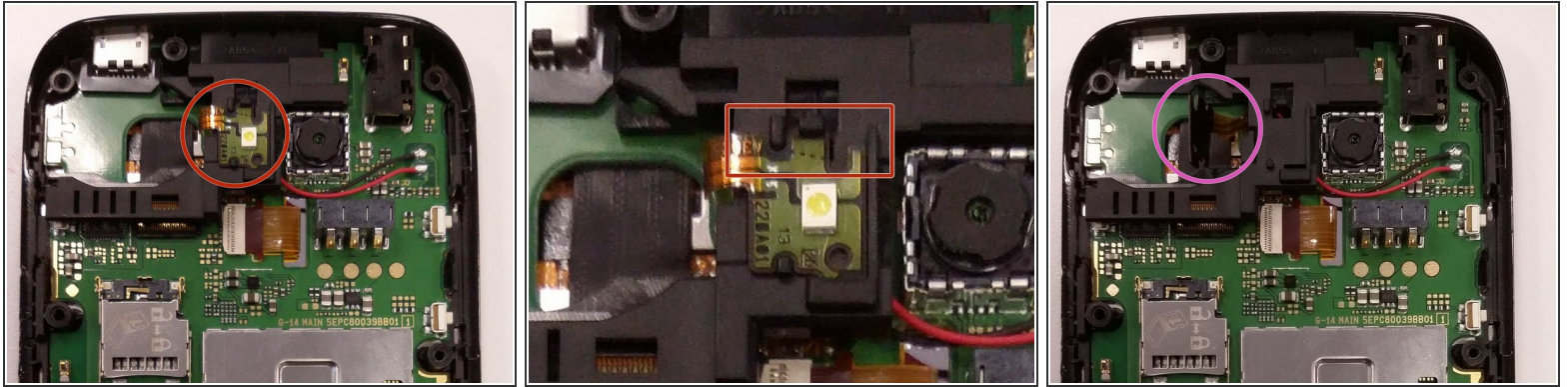
- Remove seven of the 4.9mm **tri-head** screws. Keep them in a secure location.

Step 4 — Remove the back assembly



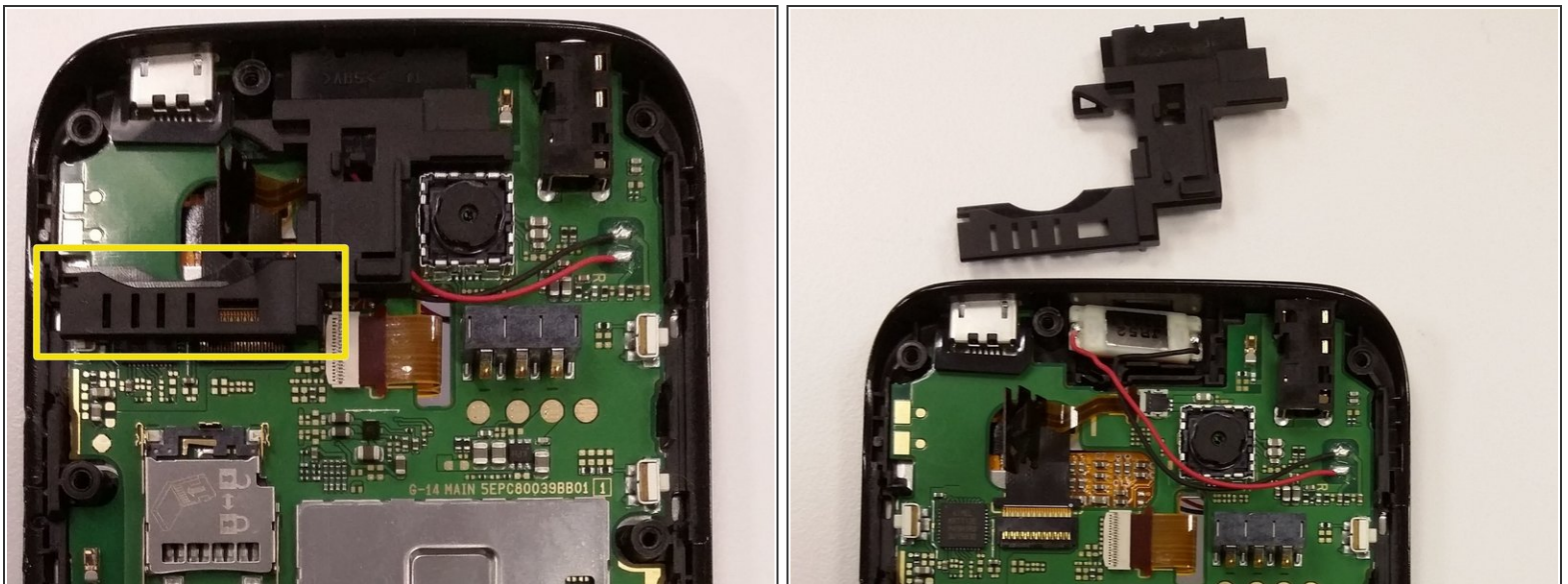
- Pry the back assembly away from the body on all four sides of the phone.
 - Start prying at the top and work around.
 - Remove the buttons for the volume and power-this will allow for easier disassembly.
- i** The back assembly is firmly attached to the body of the phone so removing it will require some force.

Step 5 — Separating the Flash Chip from its housing.



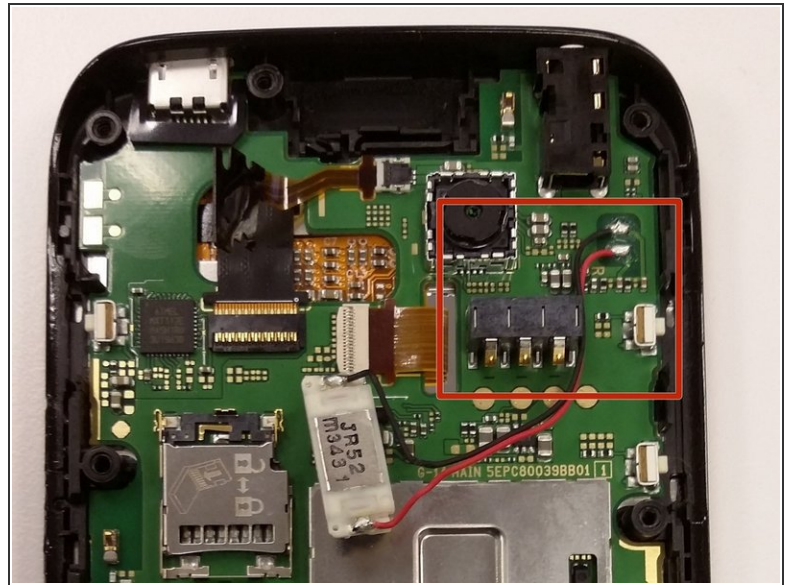
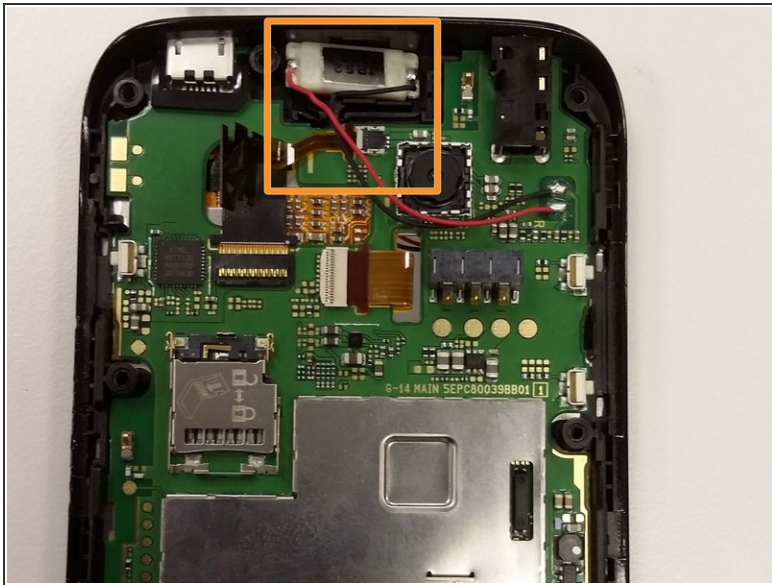
- Detach the Flash Chip from its housing using tweezers.
- ⓘ You may find it easier to loosen the top portion of the Flash Chip first.
- Once loosened, slide the Flash Chip upward and out of its housing.

Step 6 — Removing the Flash Chip housing.



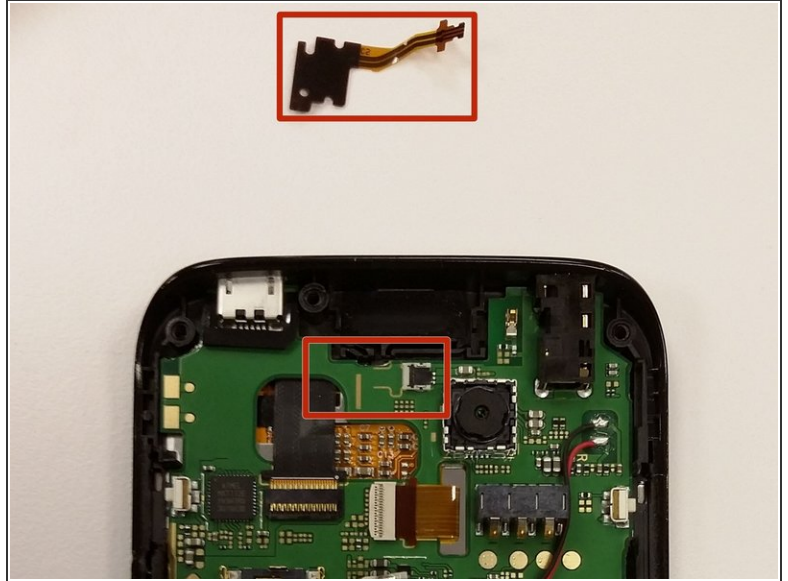
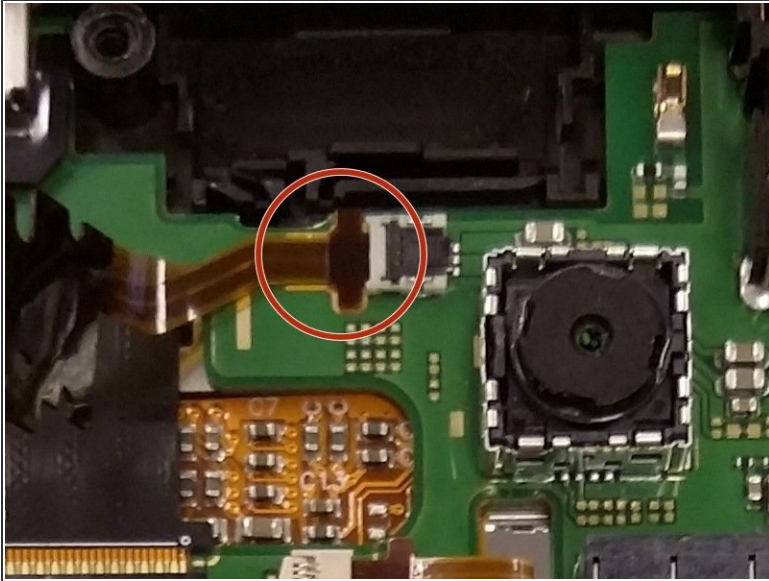
- Grab the housing on the bottom left side with fingers and pull outwards and towards the bottom of the phone.

Step 7 — Repositioning the speaker.



- Grab the speaker by its black and red wires with tweezers. Pull the wires down and to the right side of the phone.
- The speaker wires tend to move back to their original position - you may find it helpful to secure the wires behind the battery terminals to keep your work area clear.

Step 8 — Removing the Flash Chip.



- The Flash Chip attaches to the phone using a small, flat brown cord (a "ribbon"). Using tweezers, grab the ribbon as close to its attachment point as possible and pull forcefully to the left.

⚠ The Flash Chip's ribbon may be very secure due to adhesive. Be firm but gentle in removing the ribbon from its attachment point.

To reassemble your device, follow these instructions in reverse order.