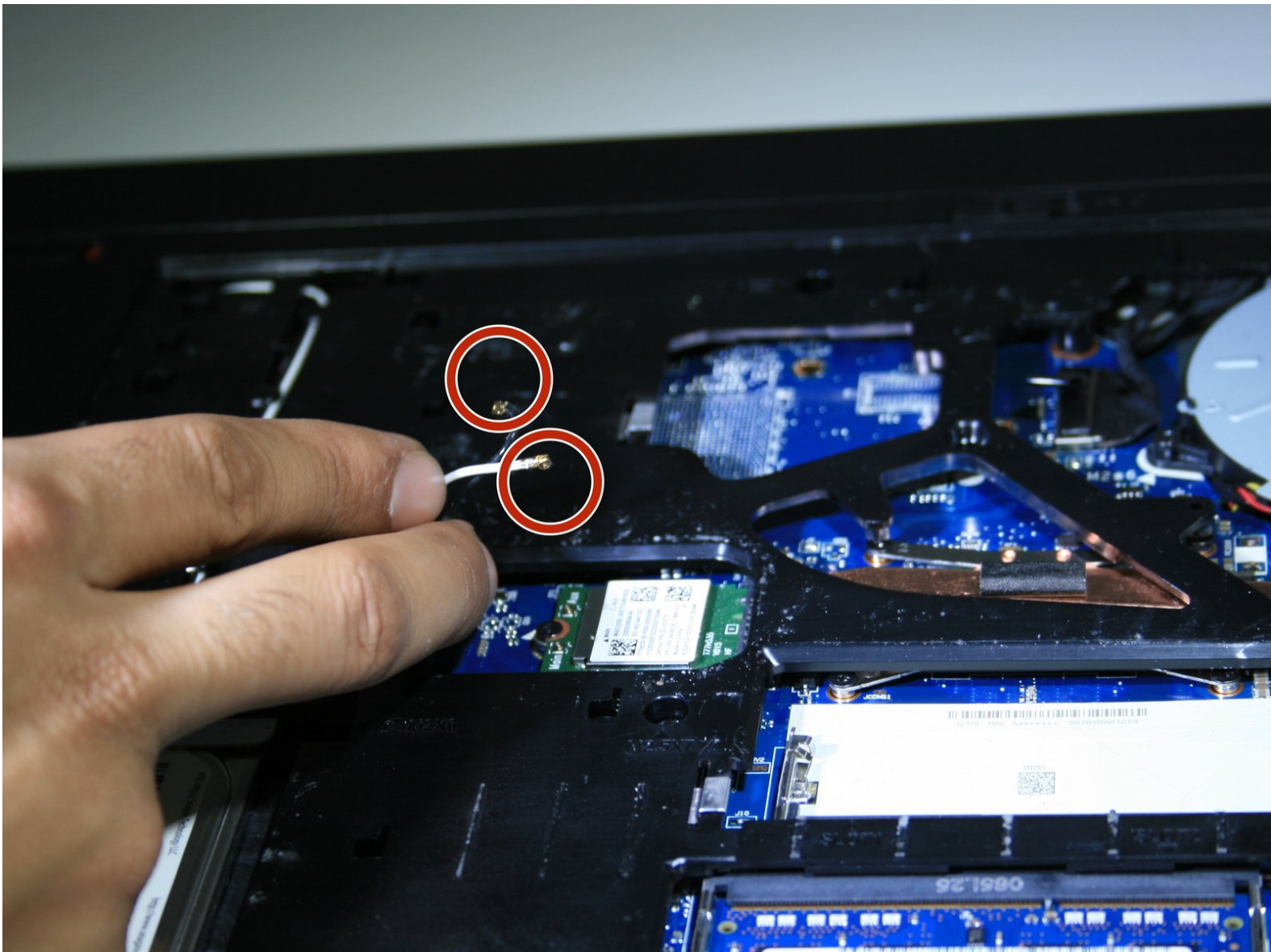




LENOVO G70-35Wi-Fi PCI Card Replacement

This guide will show you how to replace the Wi-Fi PCI Card in Lenovo G70-35 Laptop

Written By: abdualmjeed Alabdurazzaq



INTRODUCTION

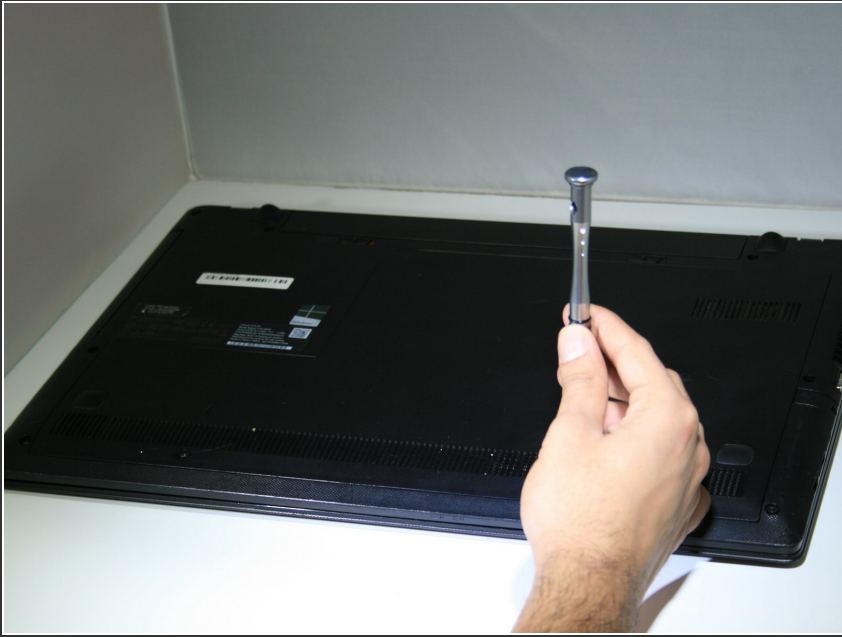
This guide will help you with the process of replacing the Wi-Fi PCI Card in your device.



TOOLS:

- [Spudger](#) (1)
 - [Phillips #0 Screwdriver](#) (1)
-

Step 1 — Back Cover



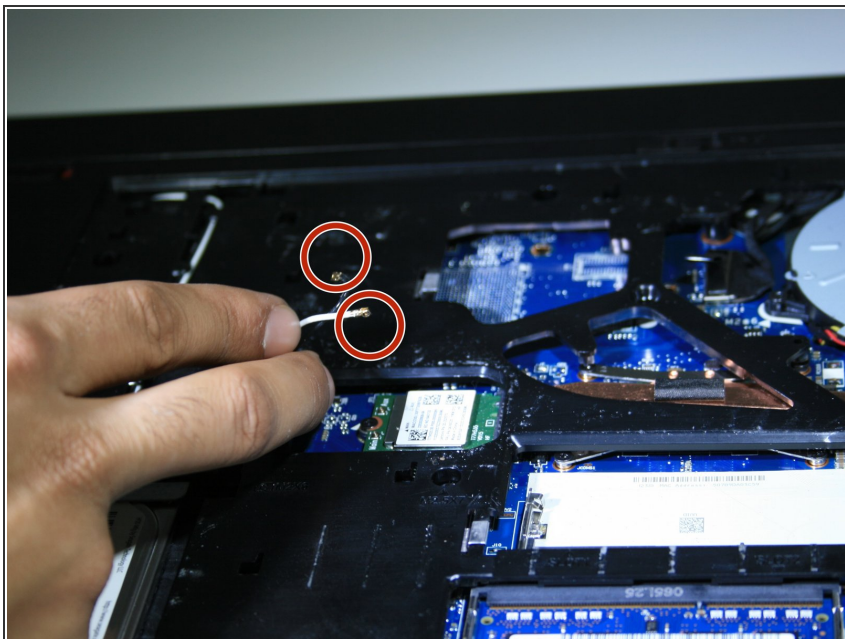
- Unscrew the two screws using a Phillips #0 screwdriver.

Step 2



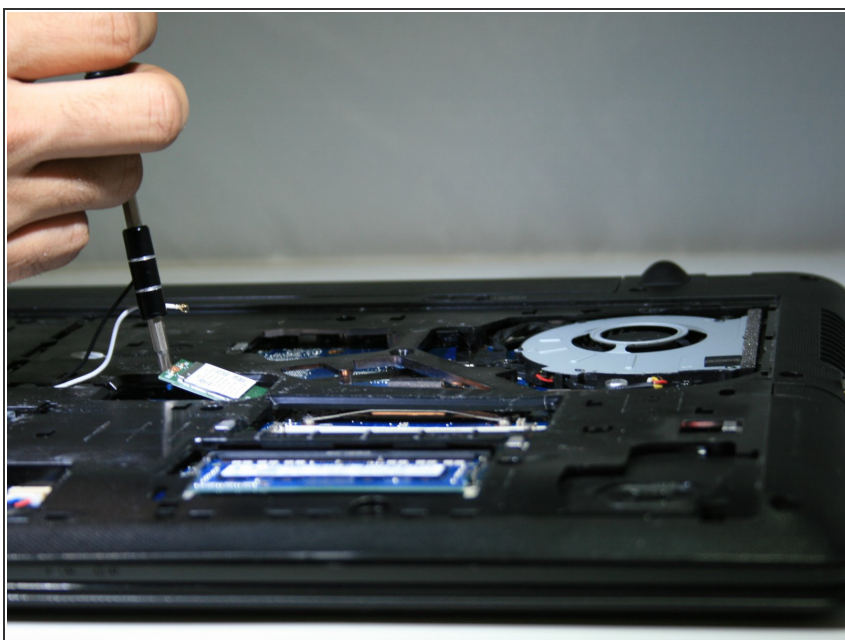
- Use a spudger to lift the back cover and remove it from the device.

Step 3 — Wi-Fi PCI Card



- Unplug the two wires that are on the Wi-Fi PCI card (white & black).

Step 4



- Unscrew the single screw in front of the Wi-Fi PCI card using the Phillips #0 screwdriver.

Step 5



- Remove the Wi-Fi PCI card from the device.

To reassemble your device, follow these instructions in reverse order.