



LG 1010 Back Cover Replacement

How to replace a damaged Back Cover on the LG 1010 Cellular Phone.

Written By: Nicholas Schmidt



INTRODUCTION

This repair guide will instruct the user how to properly remove the back cover on a LG cell phone.



TOOLS:

- [T6 Torx Screwdriver](#) (1)
-

Step 1 — Battery



- Turn off the cell phone and place face down on a flat surface.

Step 2



- While sliding the gray tab up, lift battery up and away from the cell phone.

Step 3



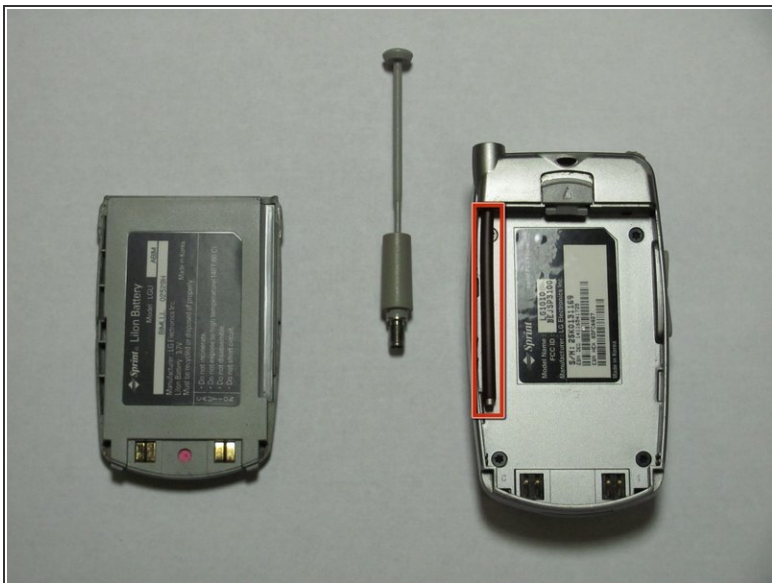
- Remove battery and set aside.

Step 4 — Antenna



- While holding cell phone firmly in one hand, unscrew and remove the antenna with the other hand.

Step 5



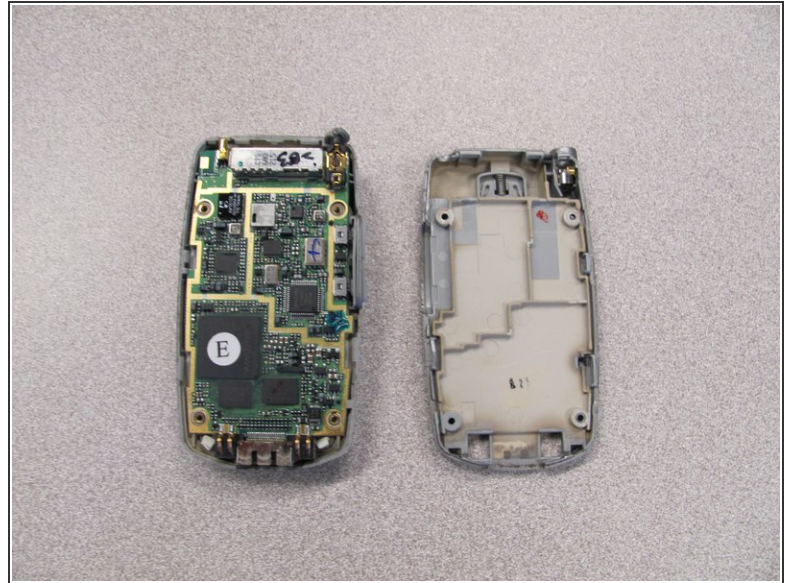
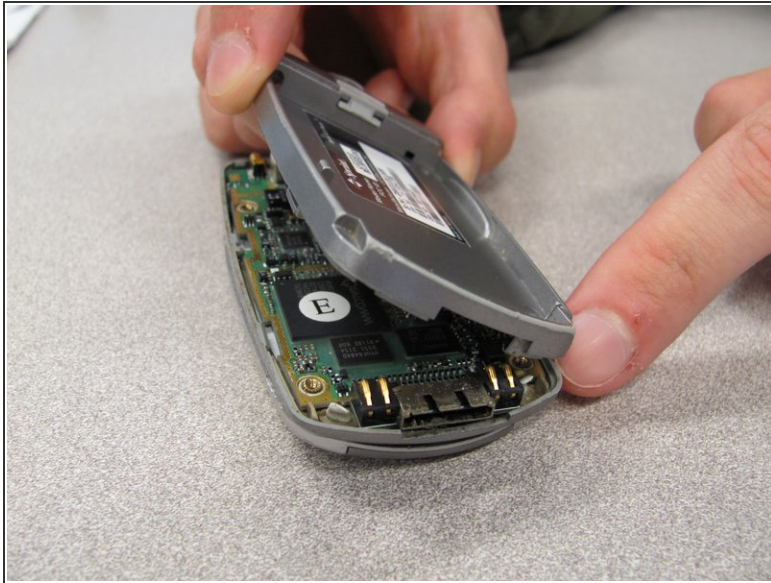
- Pull the antenna housing (black tube) towards bottom of phone and remove.

Step 6 — Back Cover



- Unscrew the four screws on the back case using a T6 Torx Screwdriver.

Step 7



- Pull the back cover straight off the phone using your thumb and forefinger.

To reassemble your device, follow these instructions in reverse order.