



LG 1010 LCD Screen Replacement

How to replace a broken LCD screen in a LG 1010 Cellular phone.

Written By: Nicholas Schmidt





TOOLS:

- [Flathead 3/32" or 2.5 mm Screwdriver](#) (1)
 - [T6 Torx Screwdriver](#) (1)
-

Step 1 — Battery



- Turn off the cell phone and place face down on a flat surface.

Step 2



- While sliding the gray tab up, lift battery up and away from the cell phone.

Step 3



- Remove battery and set aside.

Step 4 — Front Cover



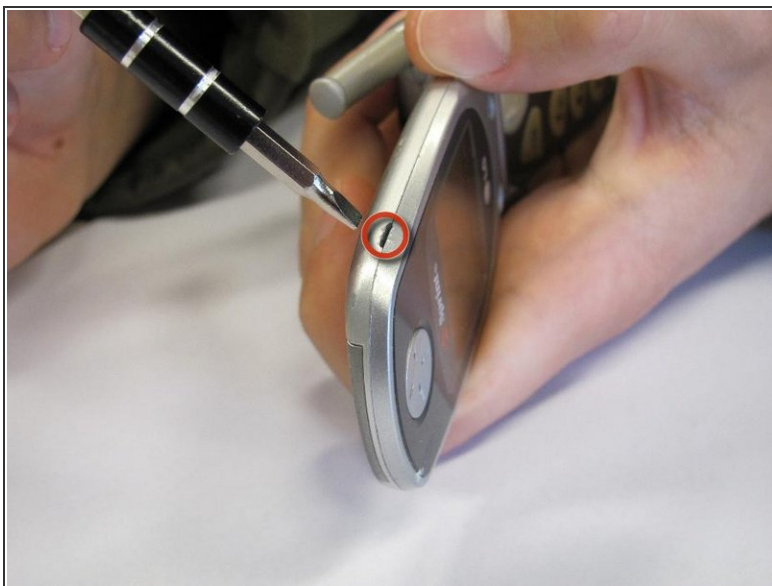
- Use a Spudger to remove the two front plastic covers to reveal screws.

Step 5



- Remove two screws using a Torx T6 screwdriver.

Step 6



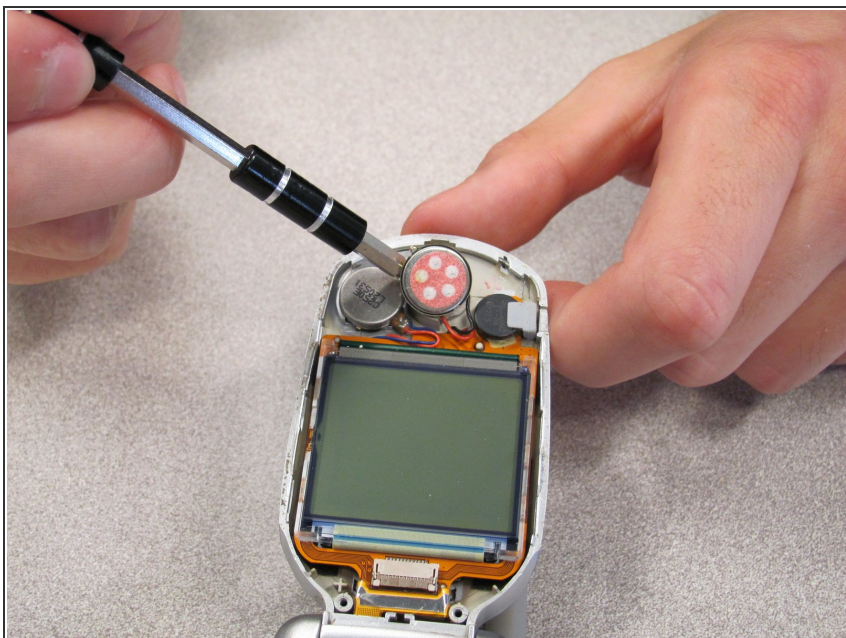
- Pry off the screen front cover with a small flathead screwdriver.

Step 7



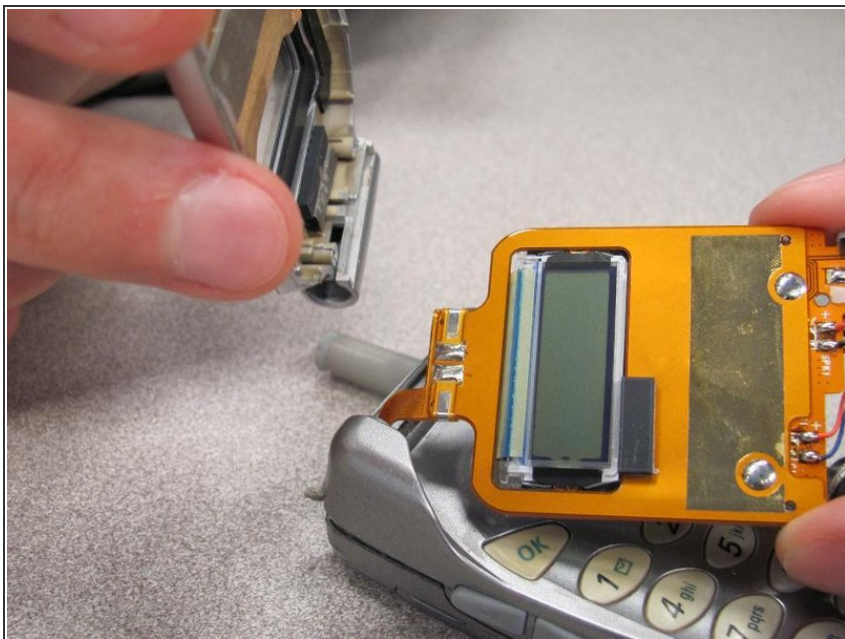
- Insert a small flathead screwdriver into the hinge and separate hinge connection.

Step 8




- Pry off the speaker which is glued on to the front cover using a small flathead screwdriver.

Step 9



- Remove remaining portion of the front case from the flexible circuit board.

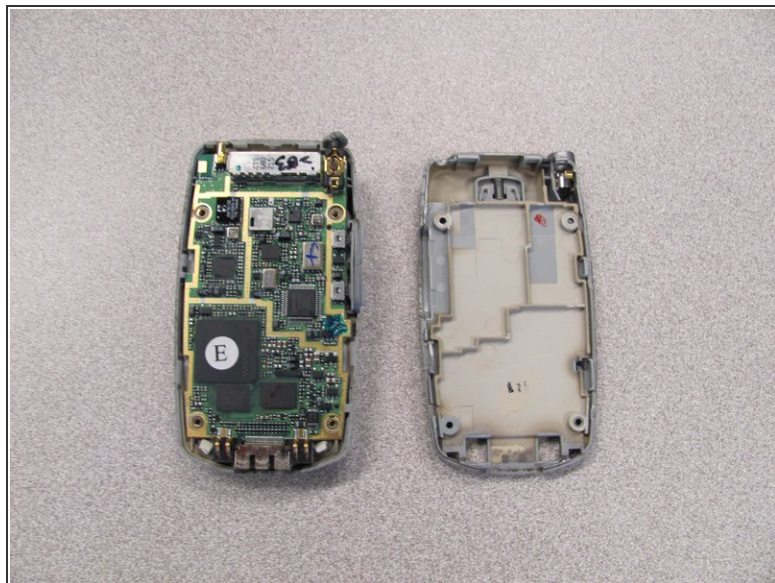
 Do not attempt to remove the LCD board at this time, as it is attached to the rear panel assembly.

Step 10 — Back Cover



- Unscrew the four screws on the back case using a T6 Torx Screwdriver.

Step 11



- Pull the back cover straight off the phone using your thumb and forefinger.

Step 12 — Keypad



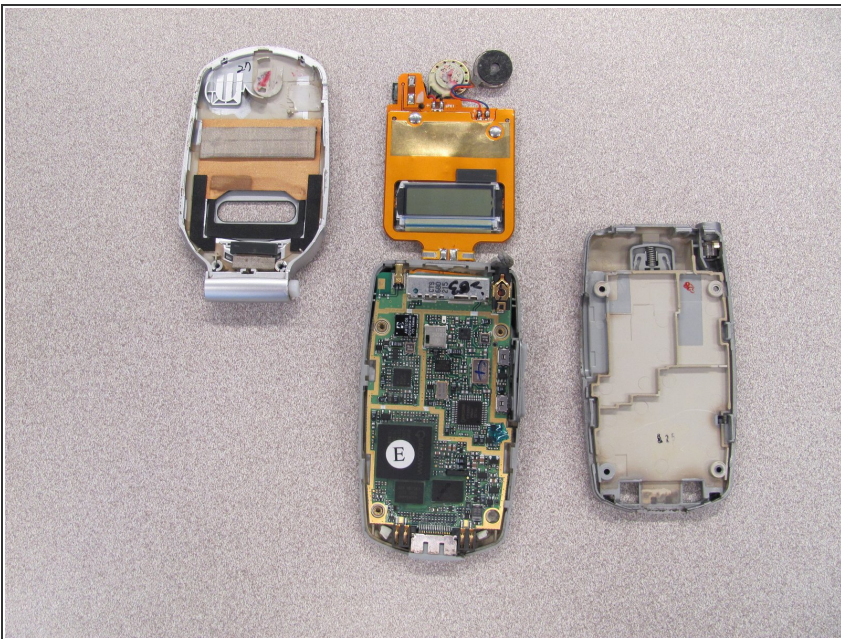
- Pry off circuit board with a flathead screwdriver.

Step 13



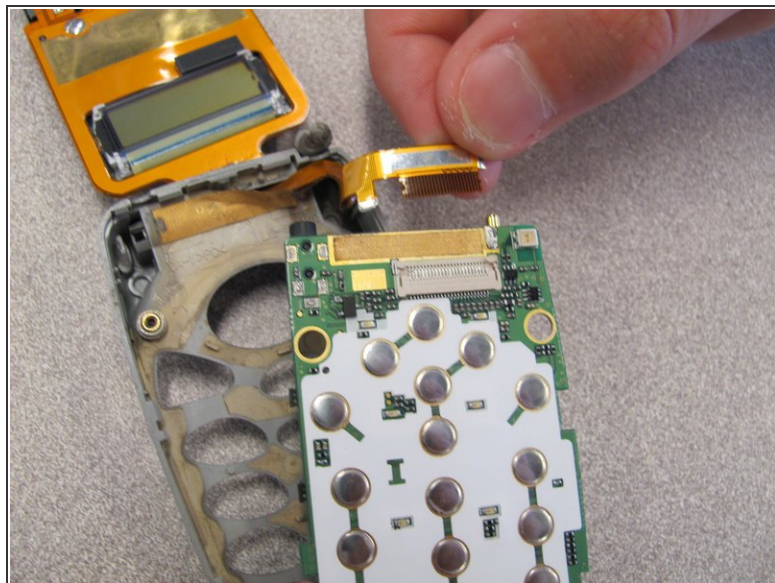
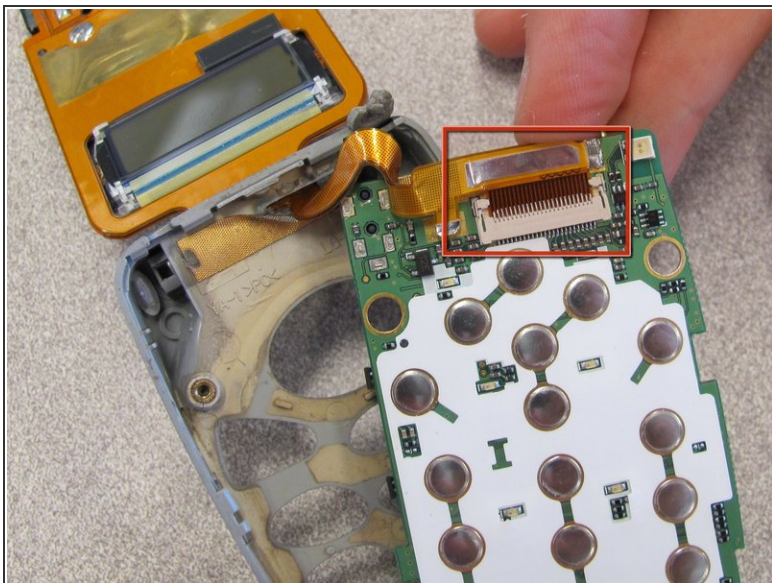
- Pull out flexible keypad.

Step 14 — LCD Screen



- The phone should now look like the picture to the left.

Step 15



- Locate and detach the ribbon cable from circuit board.

Step 16



- Remove the LCD Screen from the phone case and replace with a new LCD screen.

To reassemble your device, follow these instructions in reverse order.