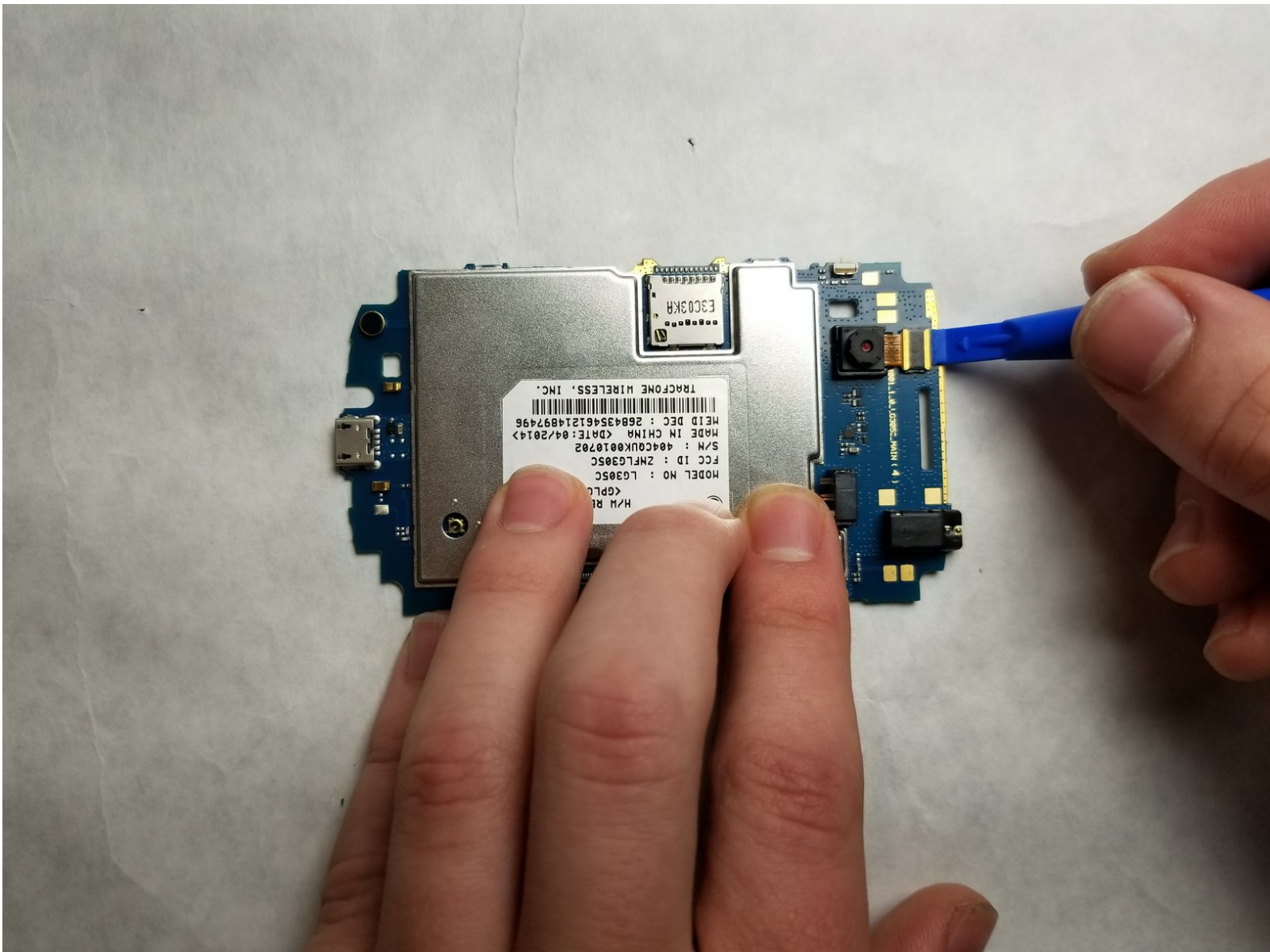




LG 305C Camera Replacement

This replacement guide will show how to replace the camera in the LG 305C.

Written By: Ashley Kidwell



INTRODUCTION

Before completing this replacement guide, it is important to unplug the device. This replacement guide will show how to replace the camera from the LG 305C.

TOOLS:

- [iFixit Opening Tools](#) (1)
 - [Spudger](#) (1)
 - [JIS #000 Screwdriver](#) (1)
-

Step 1 — Battery



- Pry open the back case on the device with a plastic opening tool and remove it.

Step 2



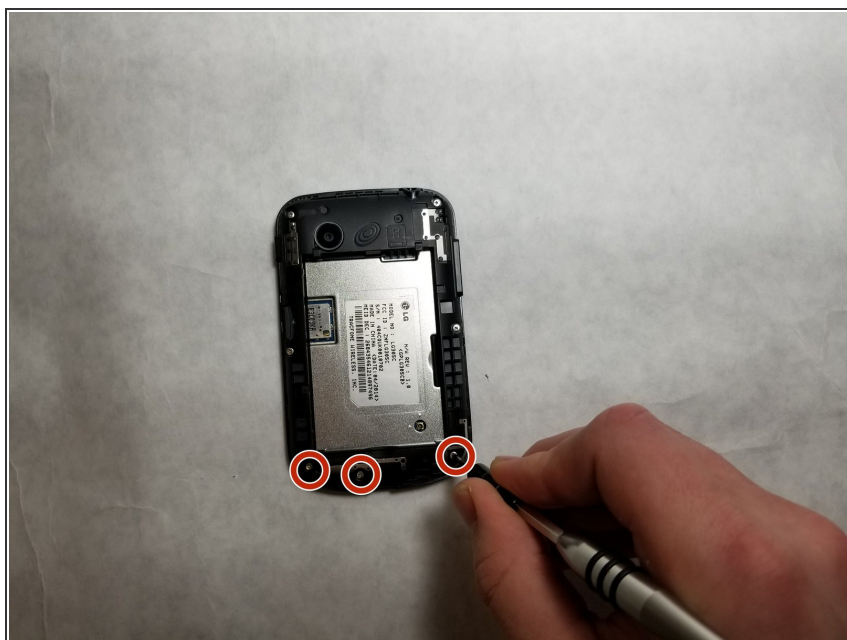
- Pry the battery out of the device with a plastic opening tool and remove it.

Step 3 — MicroSD card



- Dislodge the microSD card from the microSD card slot using your index finger and remove it.

Step 4 — Internal Casing



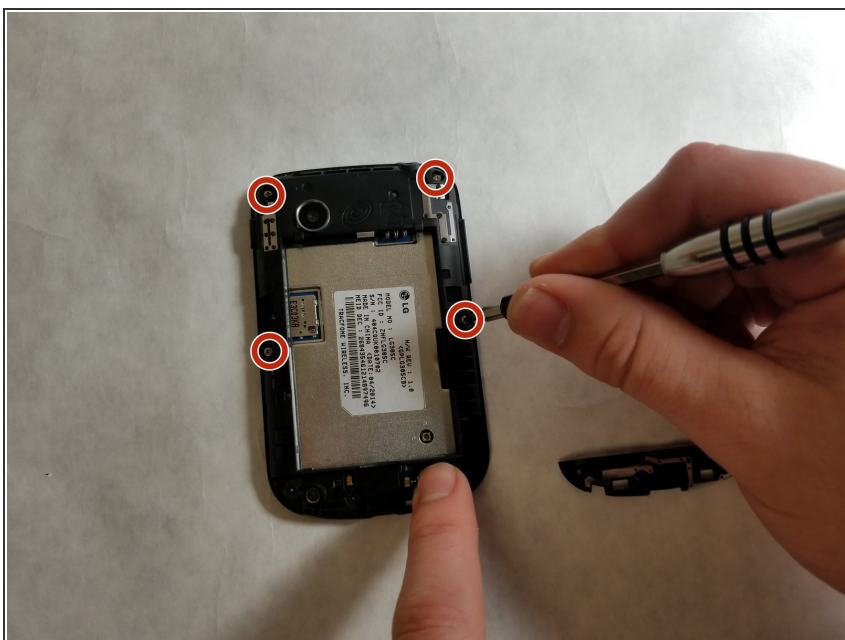
- Remove the three 4 mm screws using a JIS screwdriver with a J000 head from the bottom part of the internal casing.

Step 5



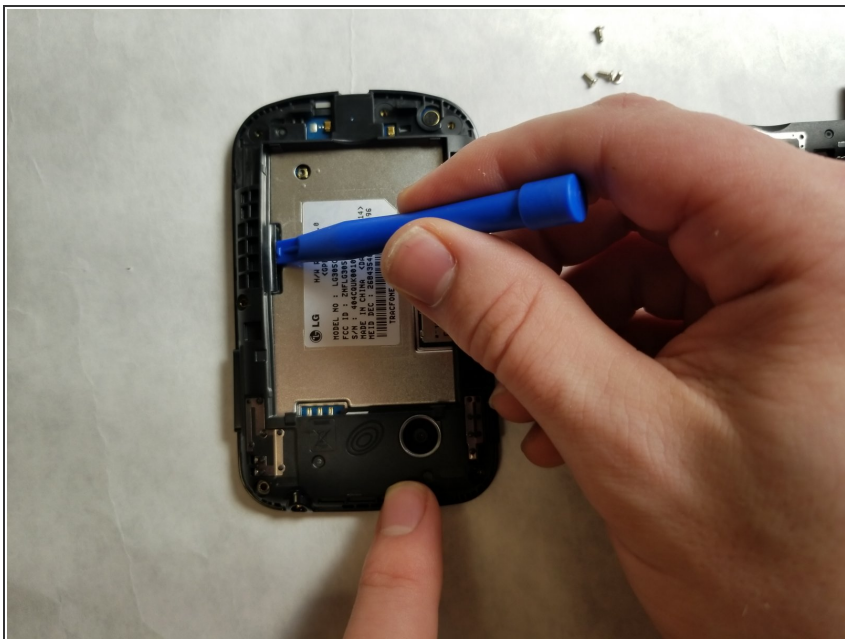
- Pry open the bottom part of the internal casing with the plastic opening tool and remove it.

Step 6



- Remove the four 4 mm screws using a JIS screwdriver with a J000 head from the top part of the internal casing.

Step 7



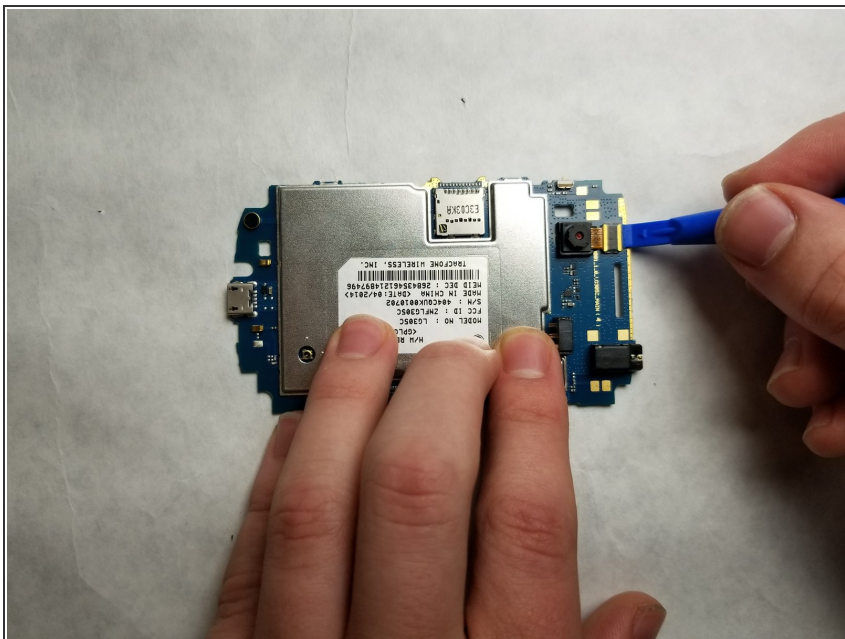
- Pry open the top part of the internal casing with the plastic opening tool and remove it.

Step 8 — Motherboard



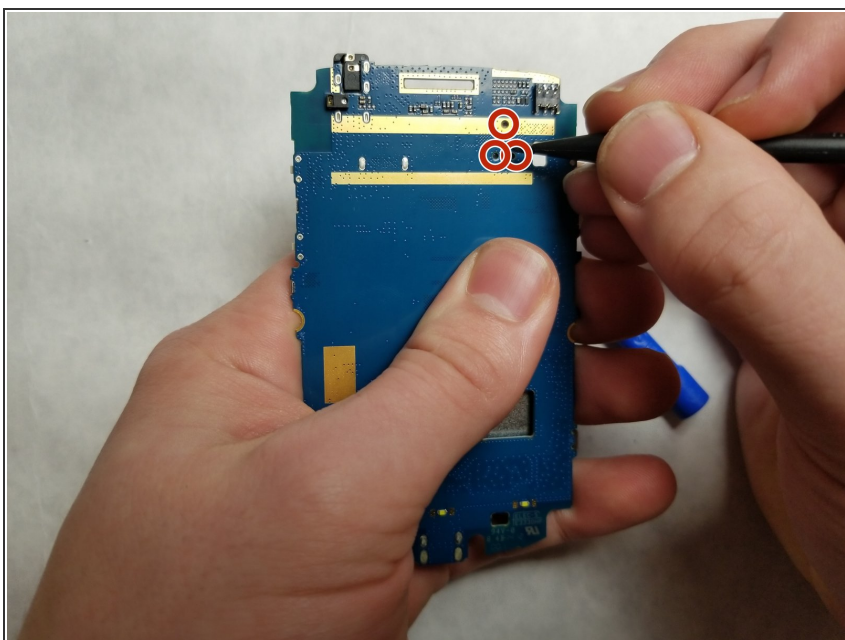
- Pry the screen from the internal circuit board with a plastic opening tool and remove it.

Step 9 — Camera



- Pry the camera from the internal circuit board with the plastic opening tool and remove it.

Step 10



- Detach the camera completely by using the spudger tool to poke through the camera attachment holes.

To reassemble your device, follow these instructions in reverse order.