



LG 32CS560 Power Supply Board Replacement

Use this guide to replace the power supply board inside the LG 32CS560.

Written By: Coyt Barringer



INTRODUCTION

Replacing the power supply board inside the LG 32CS560 is a simple task to complete with the proper preparation. It involves opening up the TV, identifying the bad power supply board, removing it, adding a new power supply board, and re-assembling the TV.

Note, only replace the power supply board if you know it is the cause for your TV's problems. If the TV doesn't turn on or only the LED's on the front of the TV turn on, then the power supply is likely to blame. Use the troubleshooting guide to help you determine if you need to replace the power supply board. Also, an annoying wining noise or burn marks on the power supply board indicate it has failed.

Please have a replacement power supply board ready to go as well. The model of power supply is the LGP32-12P. You can purchase it from numerous sites such as eBay [here](#).



TOOLS:

- [Phillips #2 Screwdriver](#) (1)



PARTS:

- [LGP32-12P Replacement Power Supply Board](#) (1)

Step 1 — Prepare your LG 32CS560 for disassembly



- Lay the TV face down on a soft surface
- Locate the position of the 15 screws needed to take the TV apart
- Be sure you already removed the TV's base by unscrewing the 4 base screws.

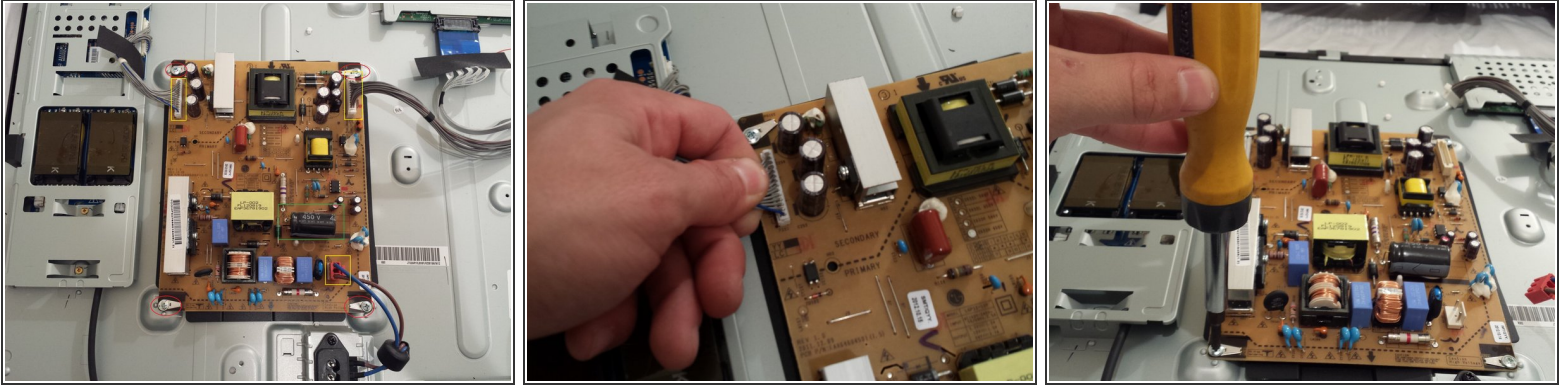
Step 2 — Disassemble the LG32CS560



- Use a Phillips head screwdriver to unscrew all 15 screws from the back of the TV
- Carefully remove the black plastic back panel of the TV to expose the electronics inside
- Locate the power supply board in the yellow square. The power supply board is the only board that is not green.

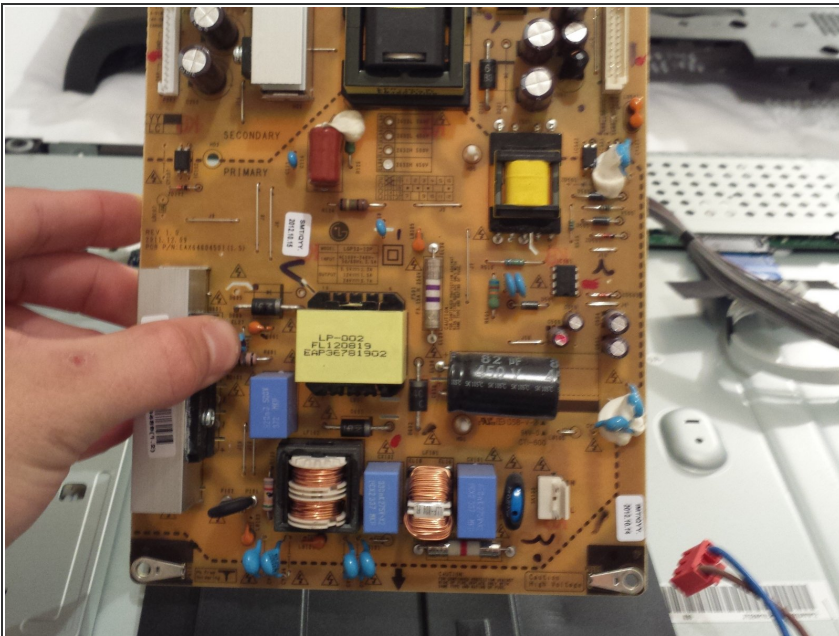
This document was generated on 2019-09-23 08:36:33 AM (MST).

Step 3 — Disconnect & Remove the Bad Power Supply Board



- Carefully disconnect the three wire bundles attached to the bad power supply board. They are in yellow boxes in the picture
- Remove the four screws (red circles in the picture) in the corners of the bad power supply board and lift it up to remove it
- The black cylindrical component in the green square on the board is a capacitor. If it is puffy or leaking liquid or goo, then the power supply board is definitely bad!

Step 4 — Add your new power supply board and reassemble!



- Simply put your new power supply board in place of the old one!

To reassemble your device, follow these instructions in reverse order.