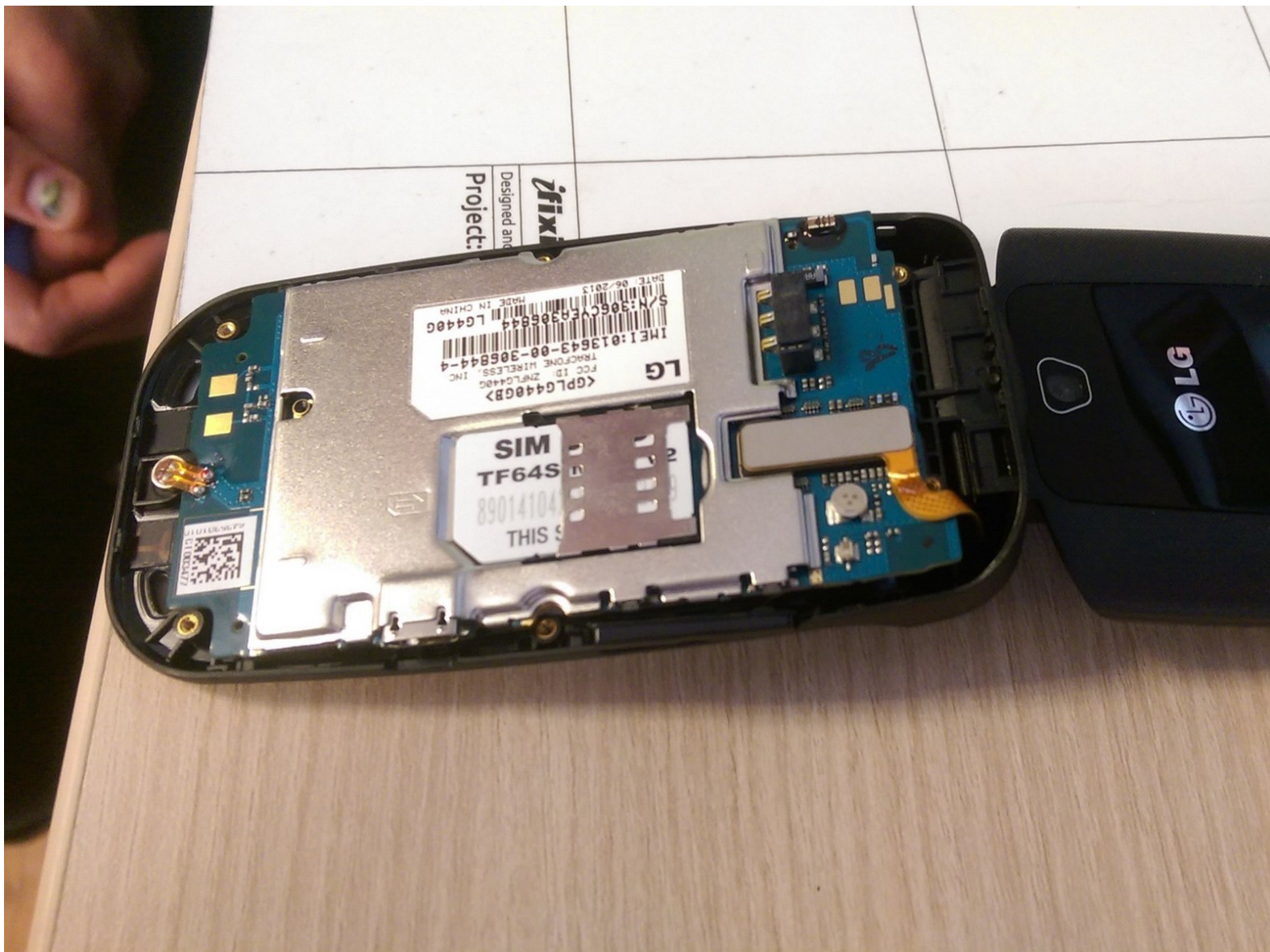




LG 440G Logic Board Replacement

removing logic board

Written By: JP Belanger





TOOLS:

- [iFixit Opening Tools](#) (1)
-

Step 1 — Turn off phone.



- Power phone off by pressing and holding red button.

Step 2 — Flip phone.



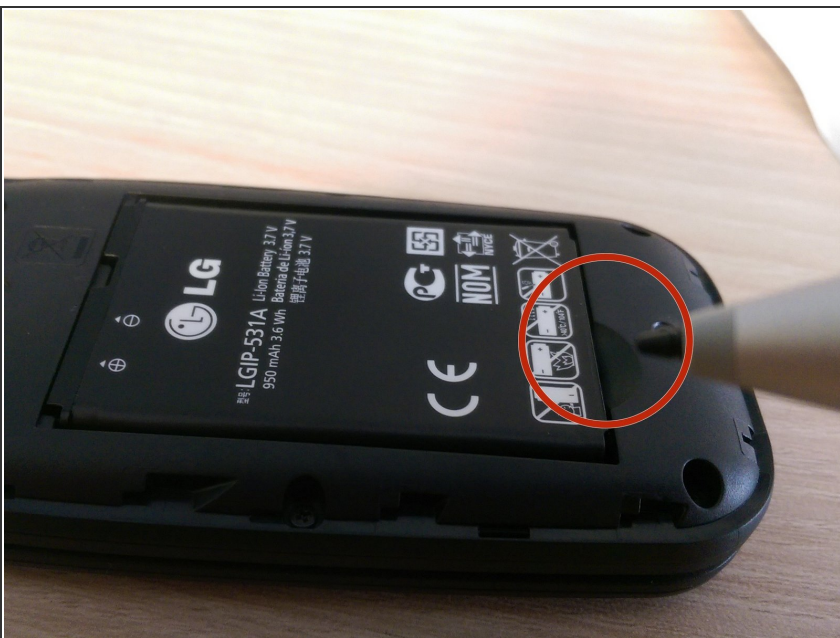
- Flip over phone to expose the rear.

Step 3 — Rear cover removal.



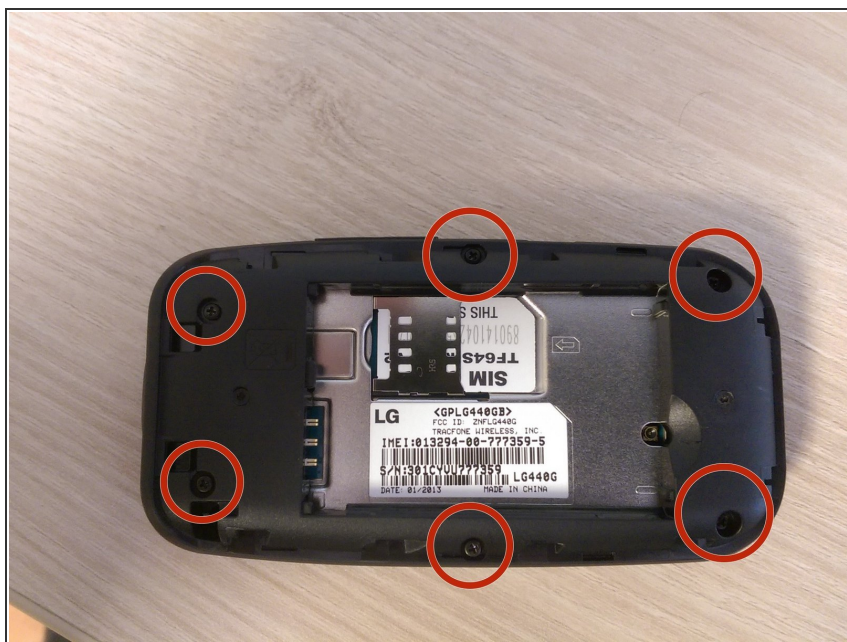
- Slide rear cover downward and lift off. You can now access the battery.

Step 4 — Removal of battery.



- Gently lift battery from bottom. Battery should lift out easily.

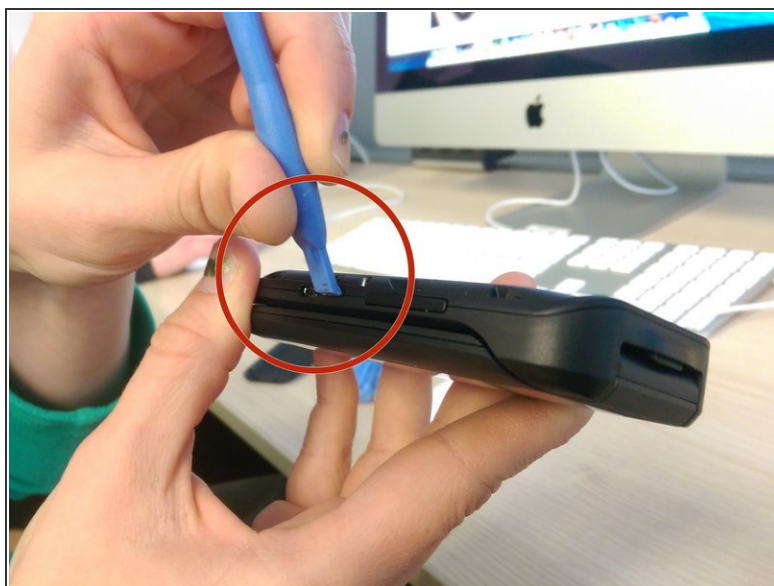
Step 5 — Unscrew six screws along edges of casing



- Use a Phillips #00 screw driver to remove six screws.

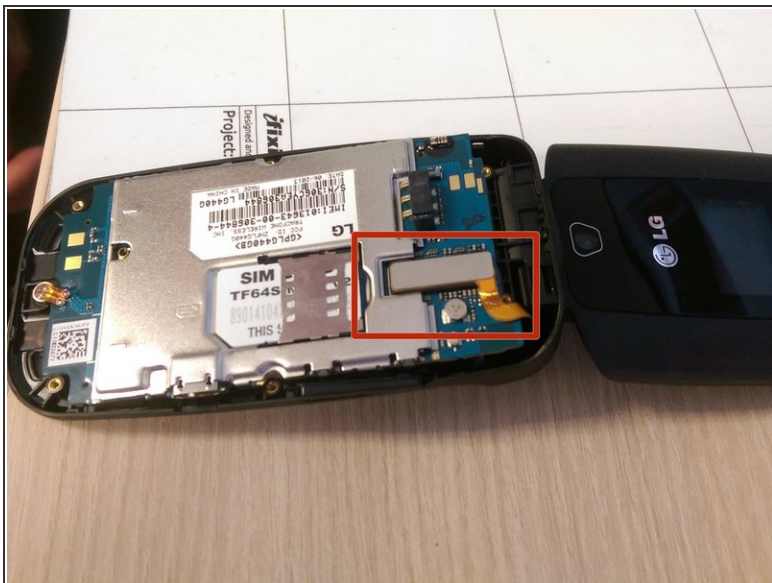
ⓘ Save screws for reassembly.

Step 6 — Lift casing cover



- Run the plastic opening tool along edge of phone to release the casing cover.
- Lift the casing cover.

Step 7 — Remove rectangular piece (with orange tape attached)



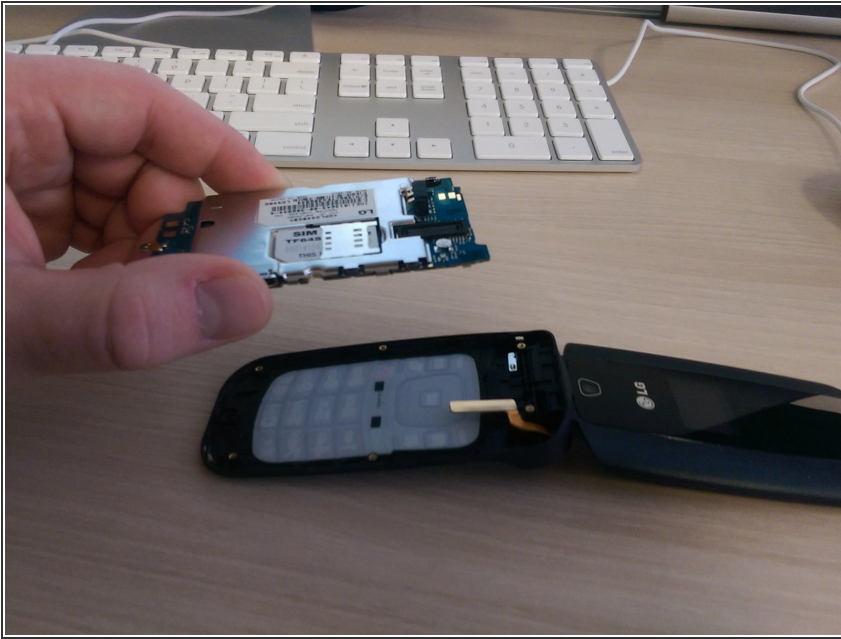
- Use plastic opening tool or fingernail to lift rectangular piece up. The piece can be identified by the orange tape attached to it.

Step 8 — Dislodge logic board



- Dislodge logic board using a plastic opening tool.

Step 9 — Lift logic board out



- Remove logic board by lifting up.

To reassemble your device, follow these instructions in reverse order.