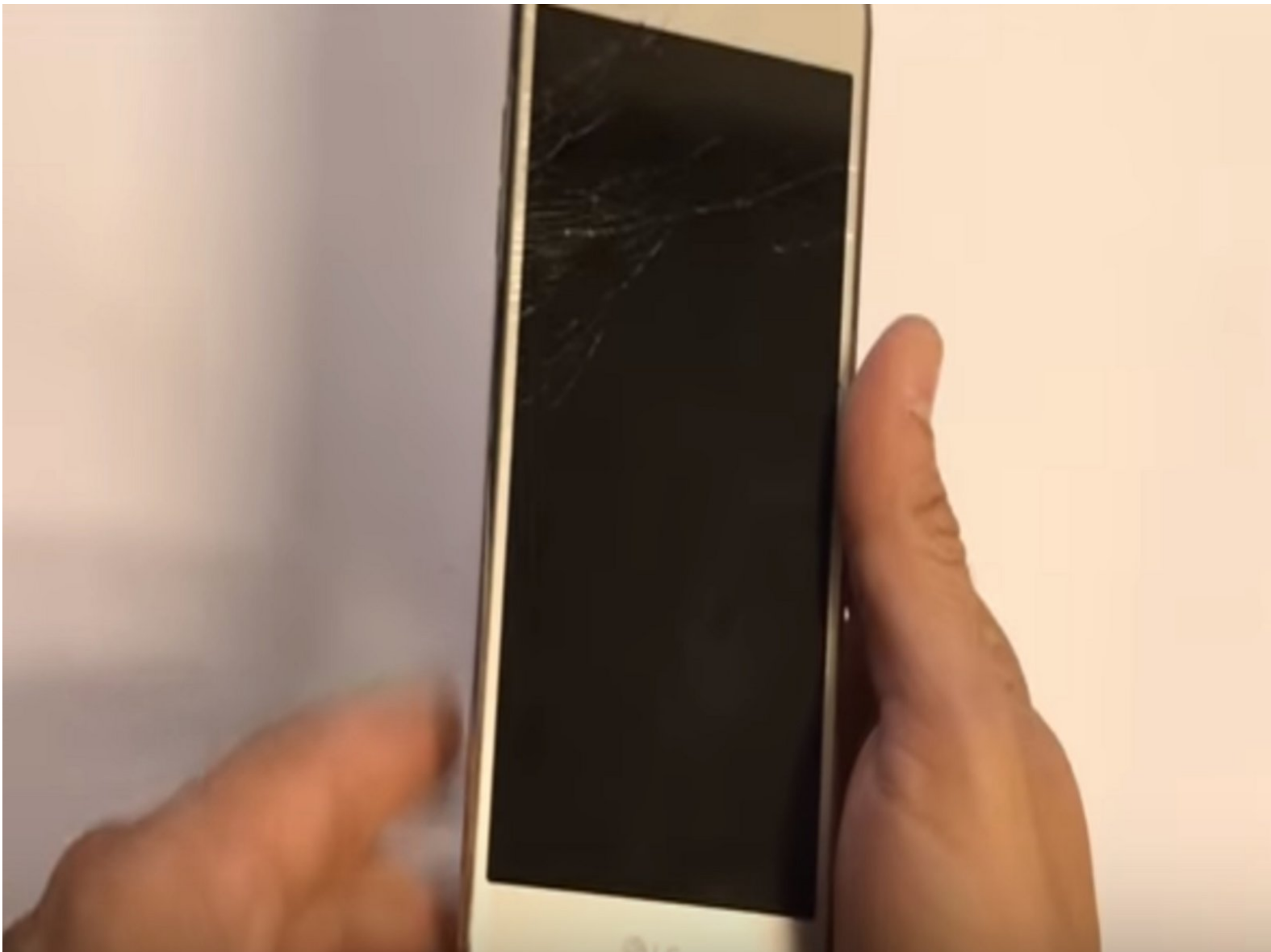




# LG Aristo MS210 Screen Replacement

This will help an individual replace and repair their LG Aristo screen.

Written By: Michael Williams



# INTRODUCTION

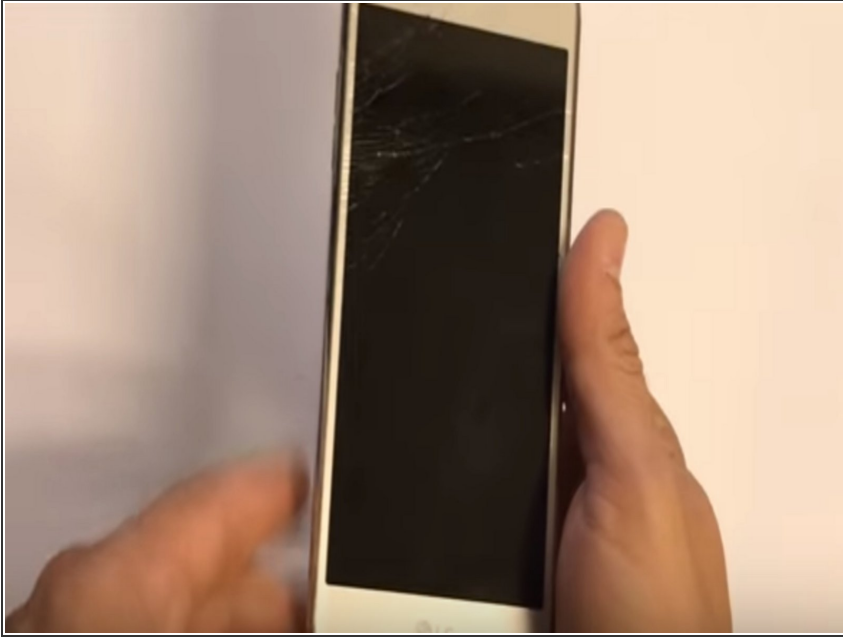
This guide was developed to demonstrate and teach the proper way to replace the screen and digitizer of an LG Aristo MS210 version.



## TOOLS:

- [Phillips #00 Screwdriver](#) (1)
  - [iFixit Opening Tools](#) (1)
  - [Spudger](#) (1)
-

## Step 1 — Screen



- Identify the problem.

## Step 2



- Remove back plating to expose the battery, sim card, and SD card (if applicable)

## Step 3



- Remove the battery.
- Remove the Sim Card
- ① If applicable remove the SD card.

## Step 4



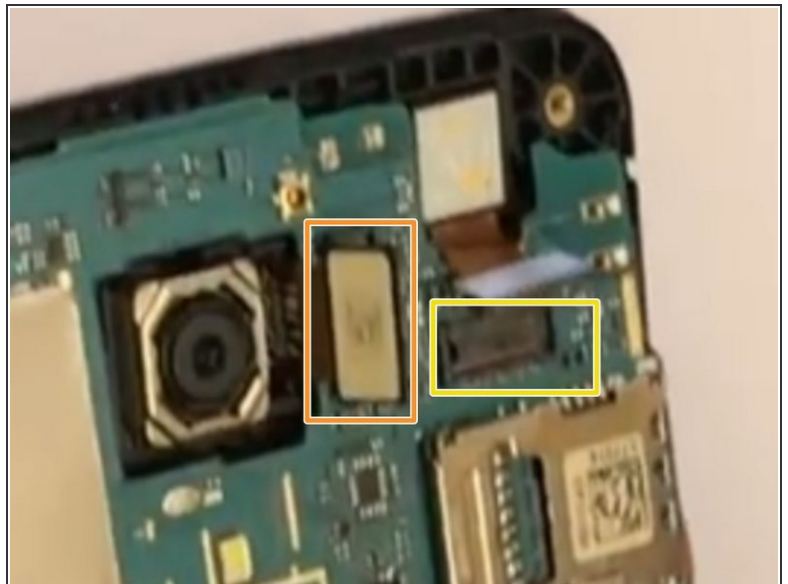
- Remove the ten screws with a Phillips #00 screwdriver.

## Step 5



- Use finger nail or wedge to gently remove dust cover, and reveal the motherboard.

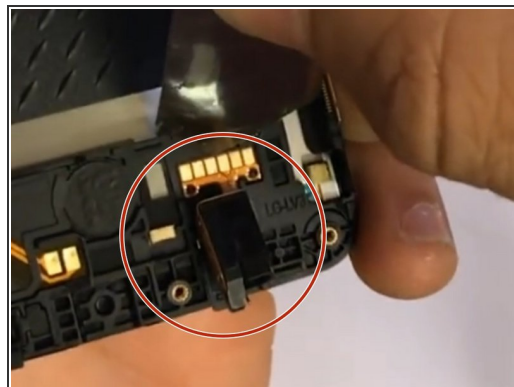
## Step 6



- Detach the bottom cable from the socket.
- Detach the cable from the socket.
- Detach and move the cable out of the housing.



## Step 7



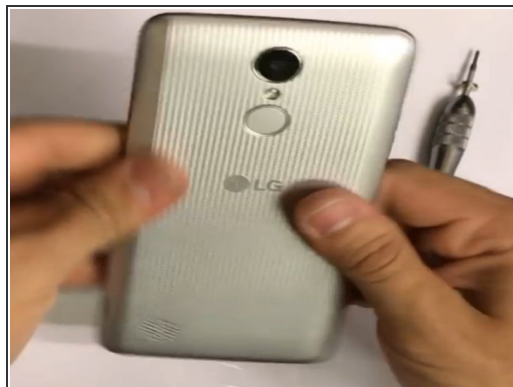
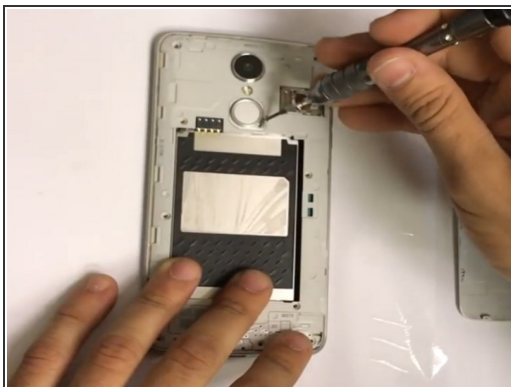
- Remove the motherboard.
- Remove the front facing camera (top)
- Remove the audio jack (bottom)

## Step 8



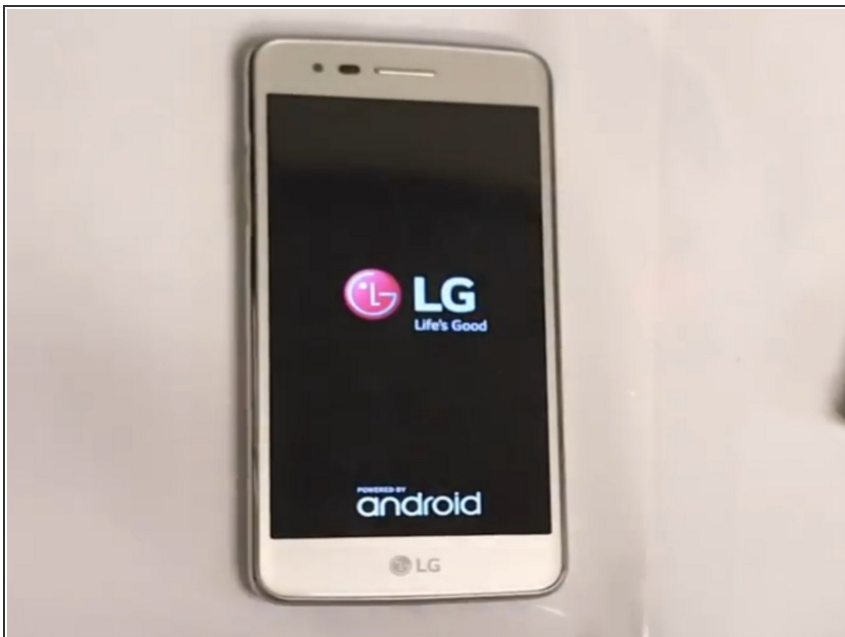
- Place components onto new screen/ digitizer.

## Step 9



- Reattach back plating.
- Use mini screwdriver to firmly attach back plating (10) screws.
- Reattach insert SD card, Sim card, and battery.
- Reattach back cover.

## Step 10



- Power on mobile device and make sure everything works properly.

To reassemble your device, follow these instructions in reverse order.

