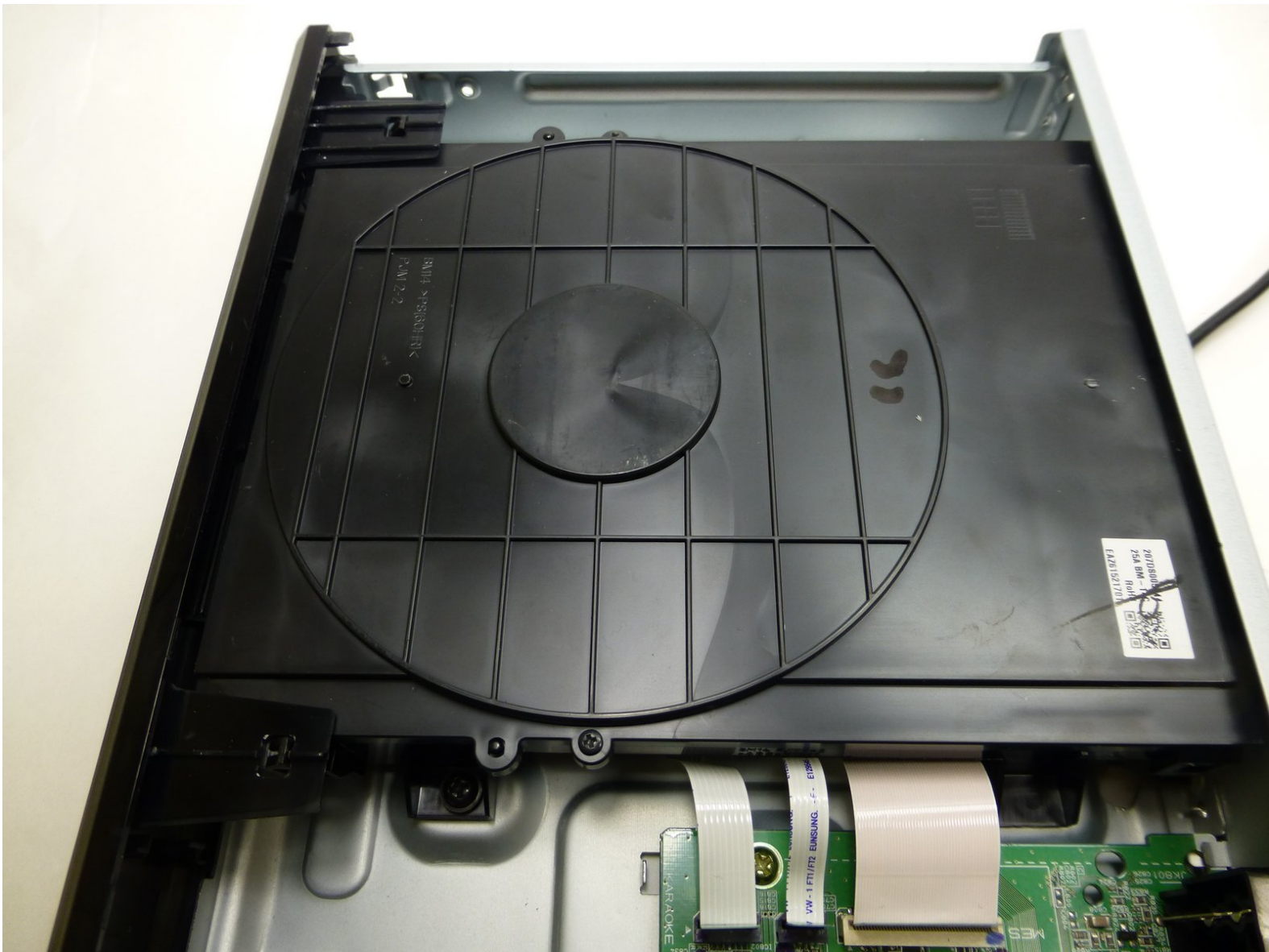




# LG BP220 Disc Drive Replacement

The removal of the disc drive is required in order to install a new one or to gain access to the disc drive's components such as the reader and tray motor system.

Written By: Bart Quicho



---

## INTRODUCTION

This guide will show you how to open up your Blu-ray player and remove the disc drive, whether it is to install a new one or gain access to the disc drive's components like the reader and tray motor.

---

### TOOLS:

- [Phillips #2 Screwdriver](#) (1)
-

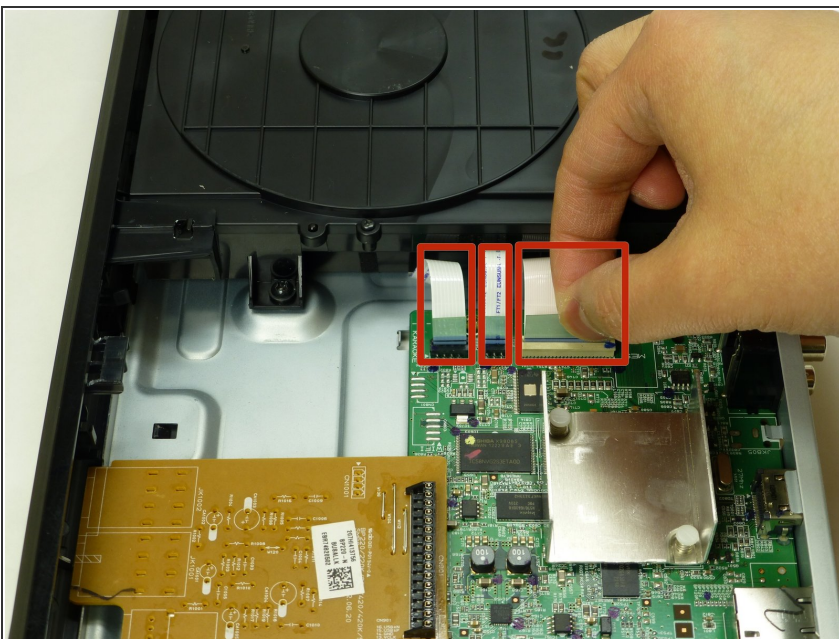
## Step 1 — Disc Drive



⚠ Ensure the device is unplugged to prevent shocks.

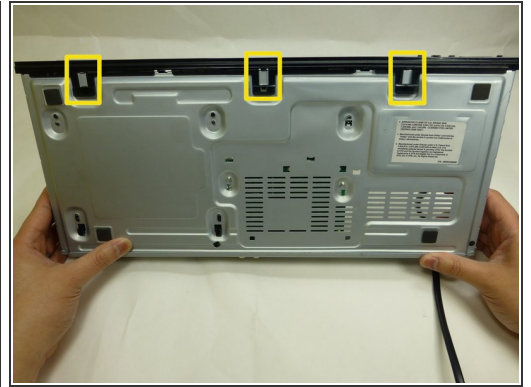
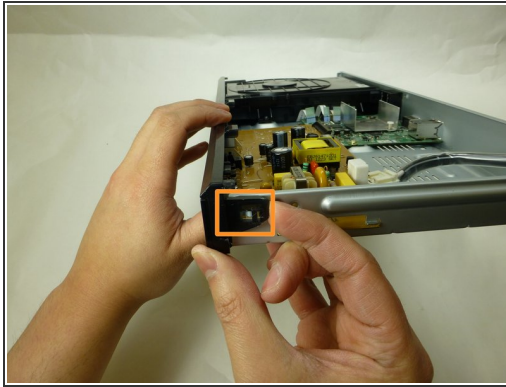
- Remove the three black 3/16" Phillips #2 screws from the backside of the player.
- With the backside (audio/video jacks) facing you, lift the part of the cover closer to you and pull until it is off.

## Step 2



- Using your fingers, pull the three tape-like cables to disconnect the disc drive from the green motherboard.

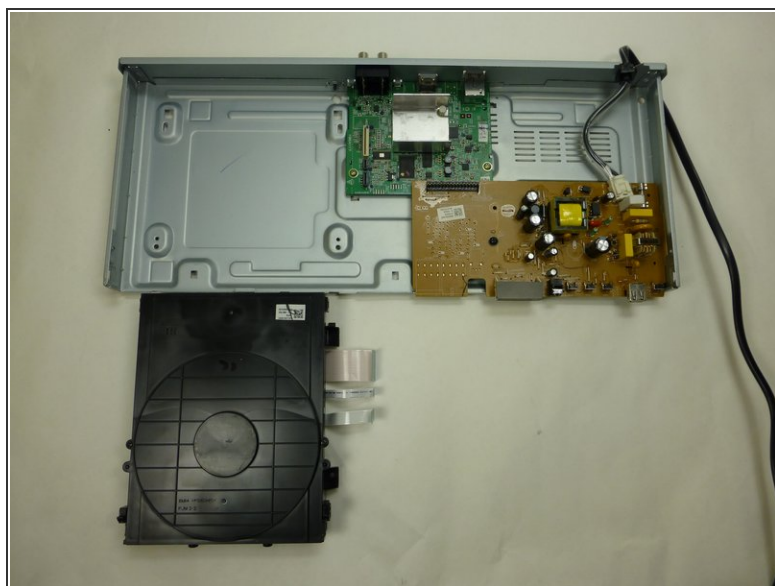
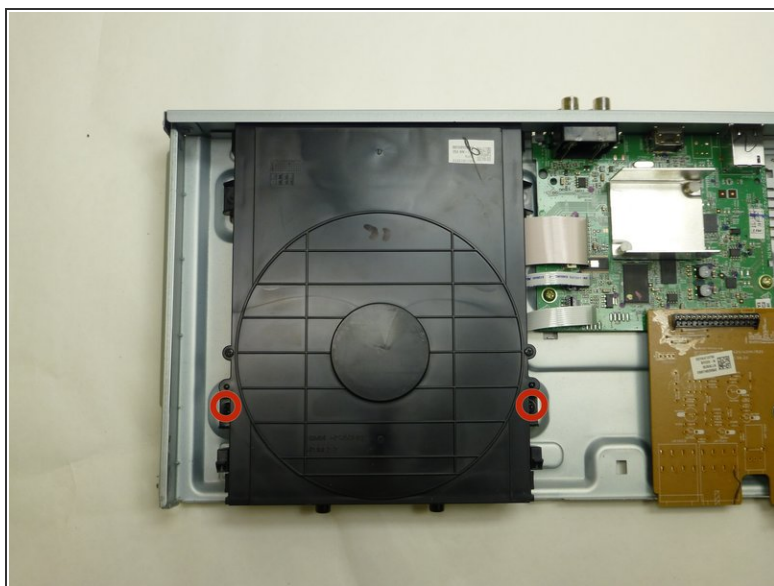
## Step 3



- Unhinge the tabs that attach the front panel to the unit:
  - Two tabs on the disc drive
  - Two tabs on the left and right side of the player
  - ⚠ Be careful when handling these tabs. They are very fragile and can be easily broken.
  - Three tabs on the underside of the player
- Pull panel away from case.
  - ⓘ If the panel does not come off right away, be sure to check if tabs have inadvertently switched back to their locked position.



## Step 4



- Remove the two black 3/16" Phillips #2 mounting screws from the left and right side of the disc drive.
- With the front side facing you lift the front of disc drive and pull out to remove.

To reassemble your device, follow these instructions in reverse order.