



LG BP220 Motherboard Replacement

The removal of the processing and button motherboards will allow the replacement of their various components or the whole unit.

Written By: Bart Quicho



INTRODUCTION

This guide will show you how to open up your Blu-ray player and remove the motherboard in order to replace various components of it or the whole unit.

TOOLS:

- [Phillips #2 Screwdriver](#) (1)
-

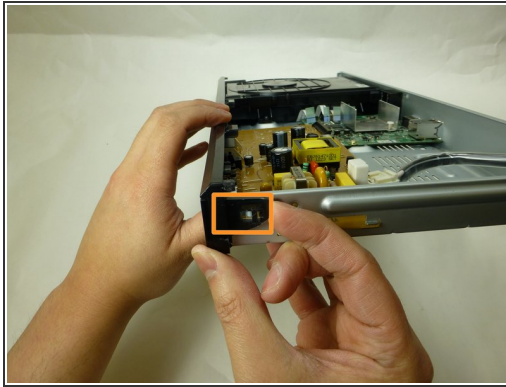
Step 1 — Motherboard



 Ensure the device is unplugged to prevent shocks.

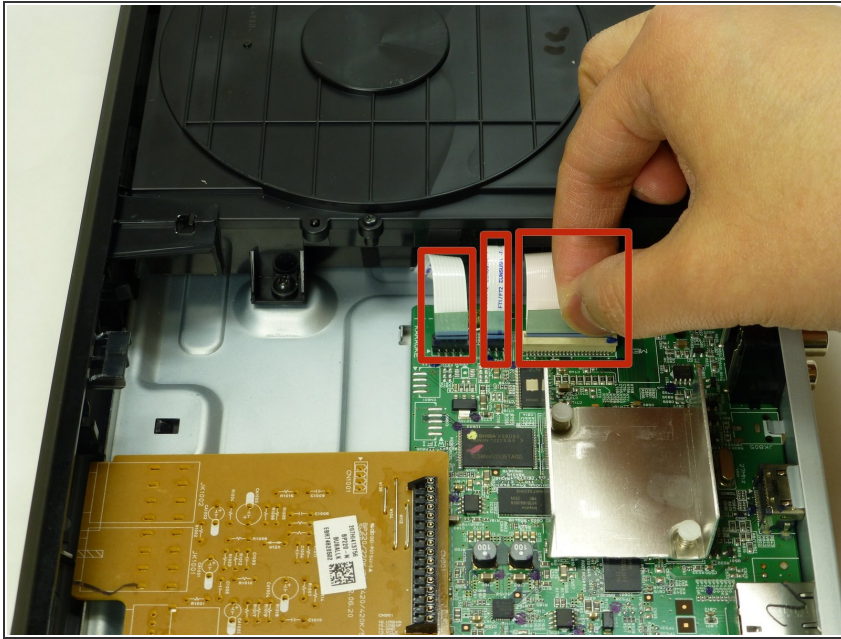
- Remove the three black 3/16" Phillips #2 screws from the backside of the player.
- With the backside (audio/video jacks) facing you, lift the part of the cover closer to you and pull until it is off.

Step 2



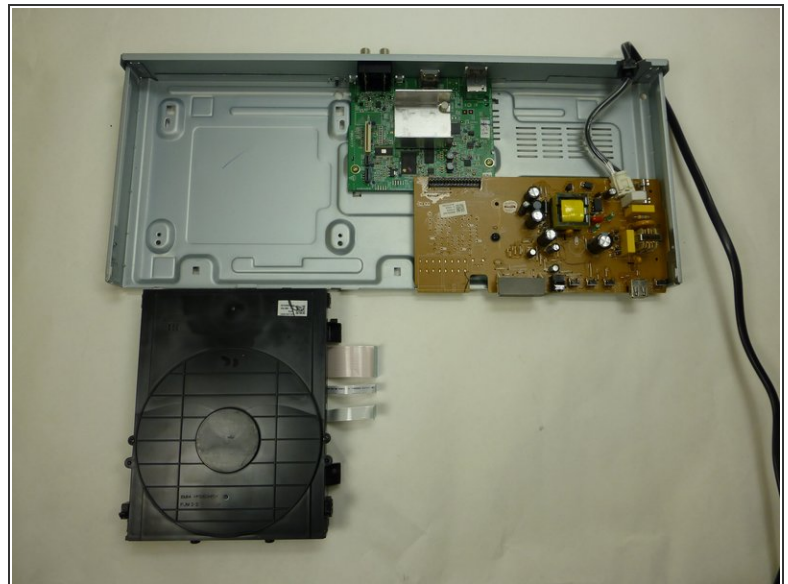
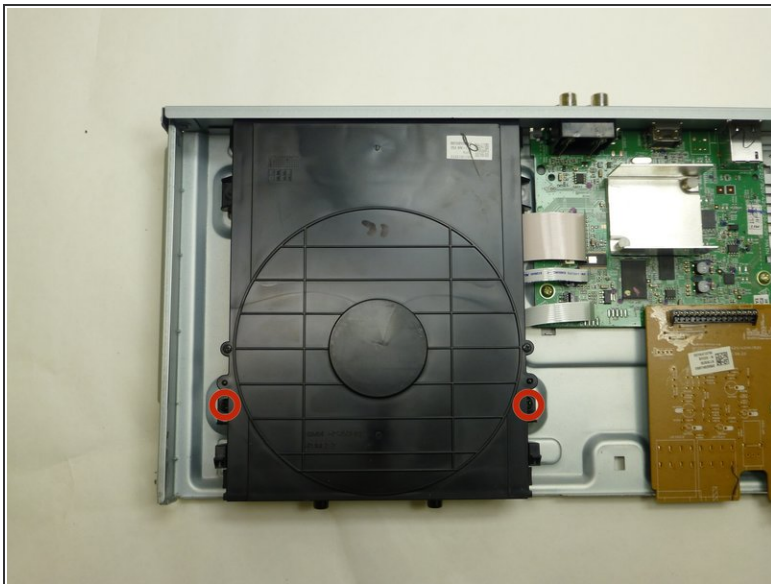
- Unhinge the tabs that attach the front panel to the unit:
 - Two tabs on the disc drive
 - Two tabs on the left and right side of the player
 - ⚠ Be careful when handling these tabs. They are very fragile and can be easily broken.
 - Three tabs on the underside of the player
- Pull panel away from case.
- ⓘ If the panel does not come off right away, be sure to check if tabs have inadvertently switched back to their locked position.

Step 3



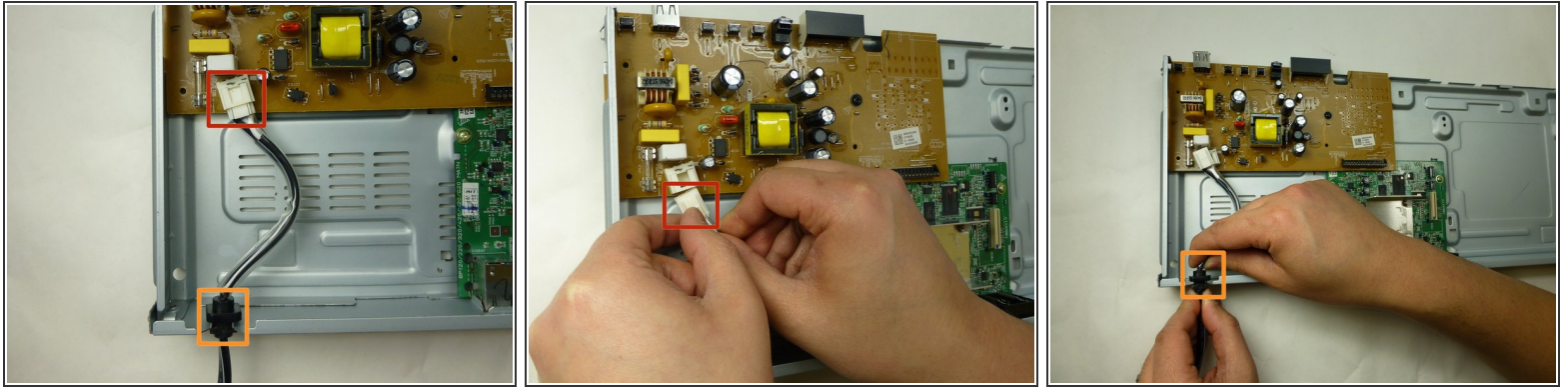
- Using your fingers, pull the three tape-like cables to disconnect the disc drive from the green motherboard.

Step 4



- Remove the two black 3/16" Phillips #2 mounting screws from the left and right side of the disc drive.
- With the front side facing you lift the front of disc drive, slide it toward you and pull out to remove.

Step 5



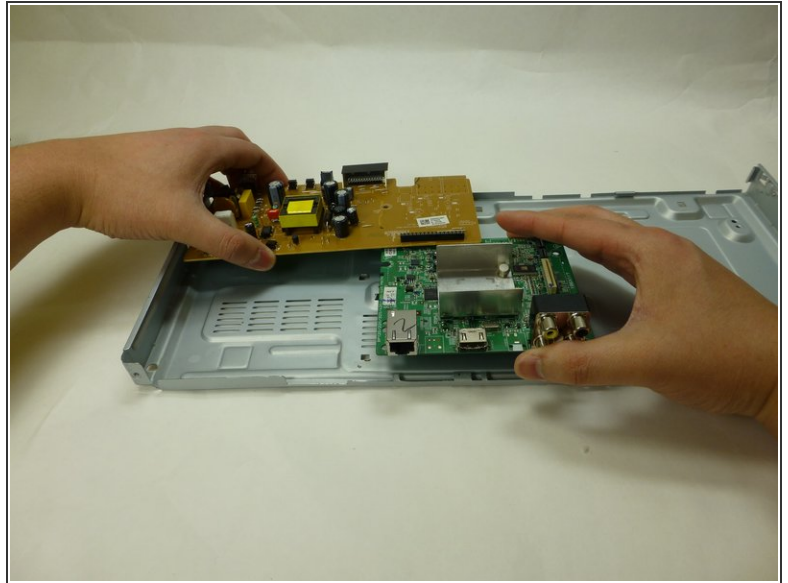
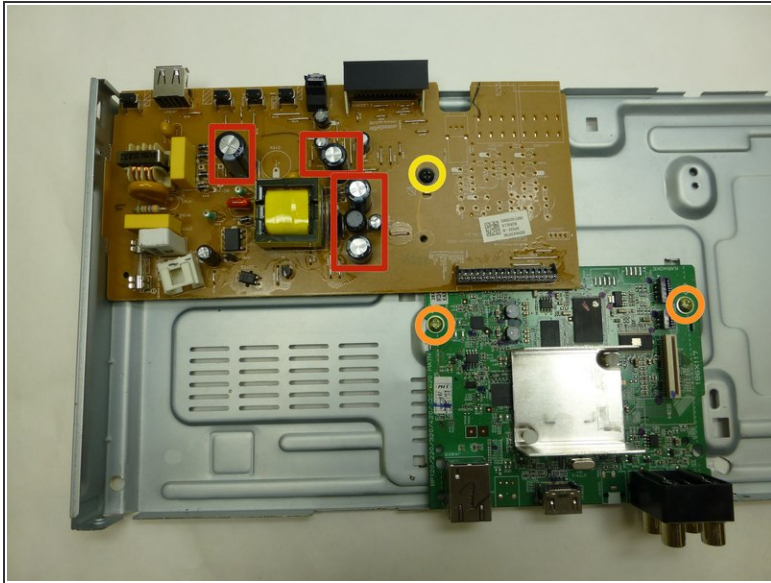
- Detach the power supply cord from the brown motherboard by pushing the locking clip on the connector, and pulling out.
- ⓘ The connector may be difficult to remove. Wiggling it while pulling out may help release it.
- Remove the power cord from the panel by carefully sliding it upwards from its seating.

Step 6



- Remove the two black 3/16" Phillips #2 screws from the backside of the player.
 - One screw inbetween the audio/video jacks
 - One screw to the bottom right of the audio/video jacks
- With the backside facing you, pull the bottom of the panel towards you and lift to remove it.

Step 7



Handle the motherboards with care. They are fragile.



Beware of the capacitors as they may shock you when touched.

- Remove the the two silver 3/16" Phillips #2 screws from the green motherboard.
- Remove the one black 3/16" Phillips #2 screw from the brown motherboard
- Use both hands to carefully lift the motherboard unit away from the player.

To reassemble your device, follow these instructions in reverse order.