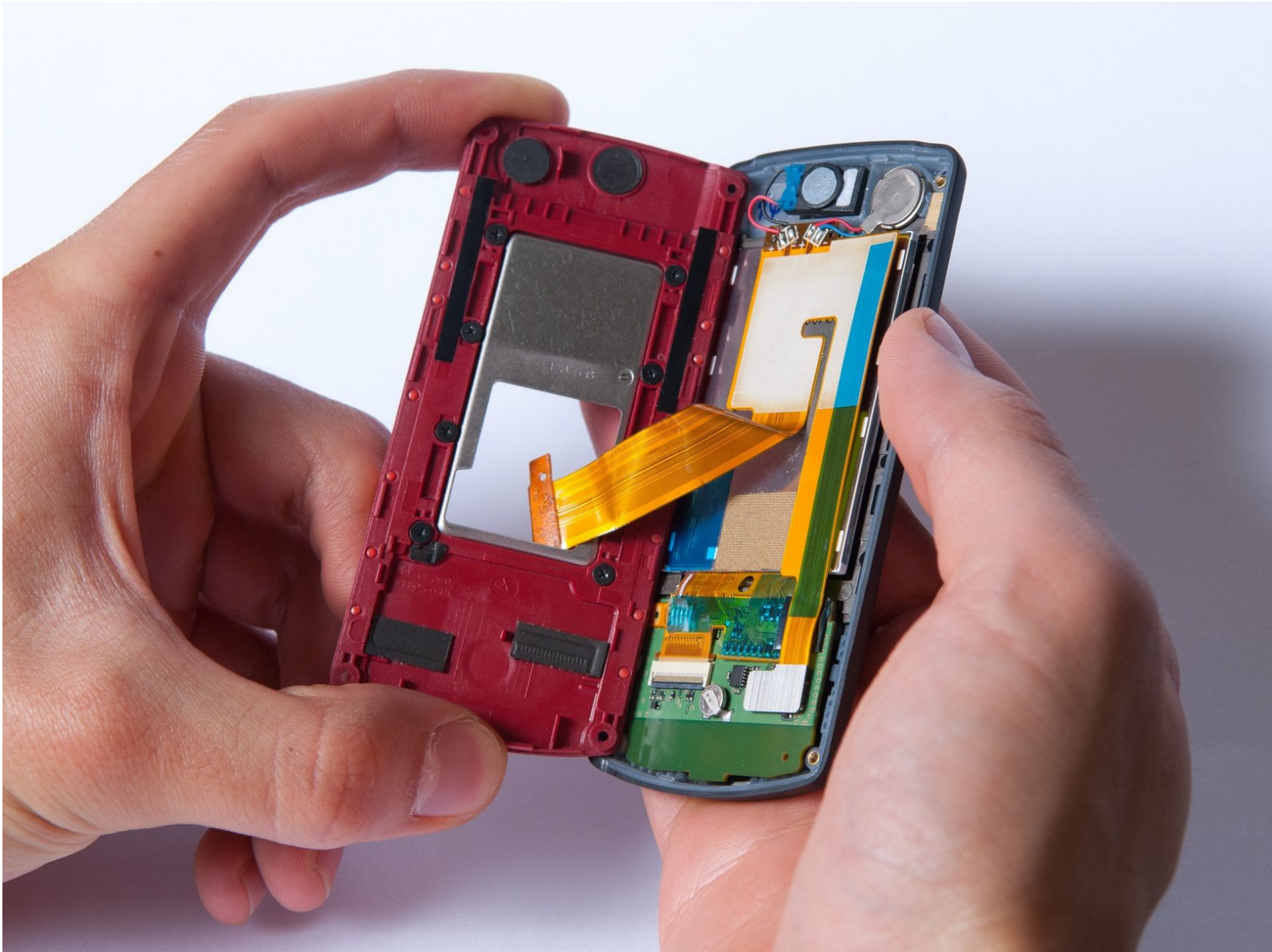




LG CF360 Front Case Replacement

How to separate the front case from the sliding portion.

Written By: Kathrine Muirhead



INTRODUCTION

Your phone uses a spring to help make the keypad slide in and out seamlessly. It is located between the front and back case. In this guide you will learn how to separate the front case from the sliding portion

TOOLS:

- [Phillips #000 Screwdriver](#) (1)
 - [iFixit Opening Tools](#) (1)
 - [Tweezers](#) (1)
-

Step 1 — Battery



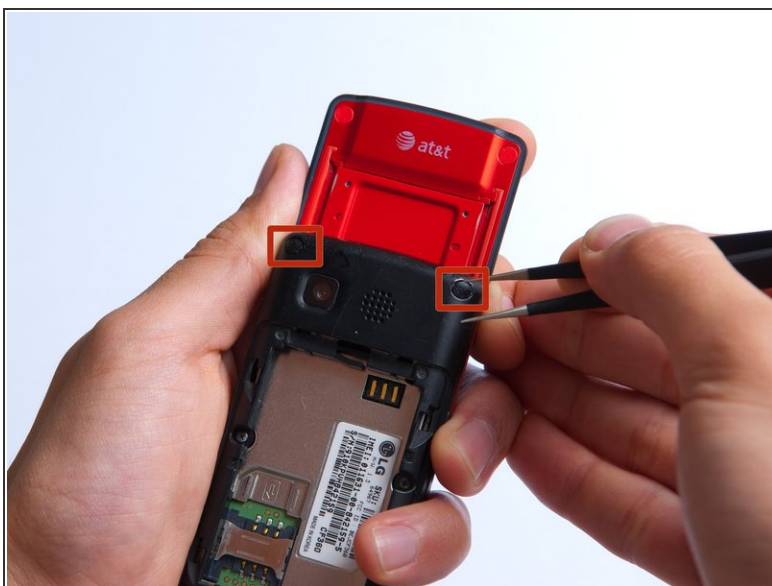
- On the back of the phone, place your thumb on the three raised bumps and slide the back cover upward.

Step 2



- Lift and remove the battery.

Step 3 — Back Cover



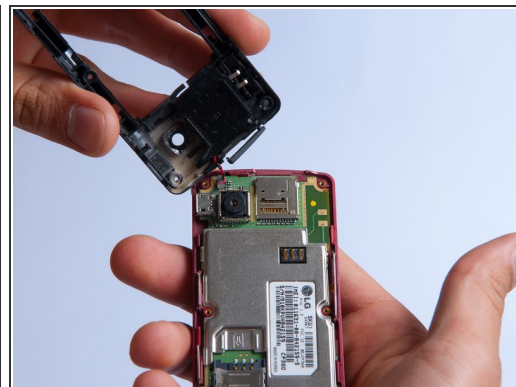
- Remove the two screw covers at the top of phone with tweezers.

Step 4



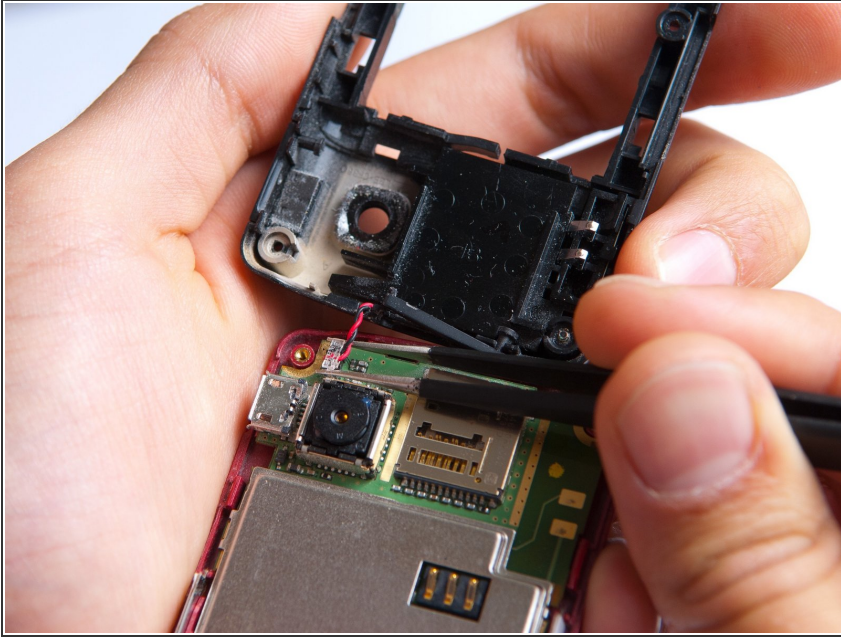
- Remove the six Phillips #000 (3mm) screws.

Step 5



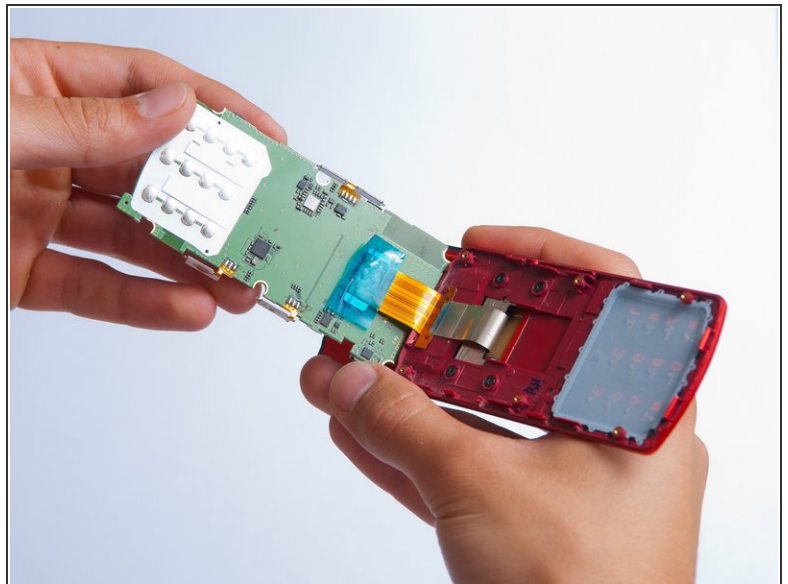
- Use the plastic opening tool to pry the back cover off. Insert the tool between the back cover and red mid section and go around the entire phone.
- ⓘ The plastic side buttons fall out when you take the back cover off.
- ⓘ The back cover is connected to the speaker by red and black wires.

Step 6



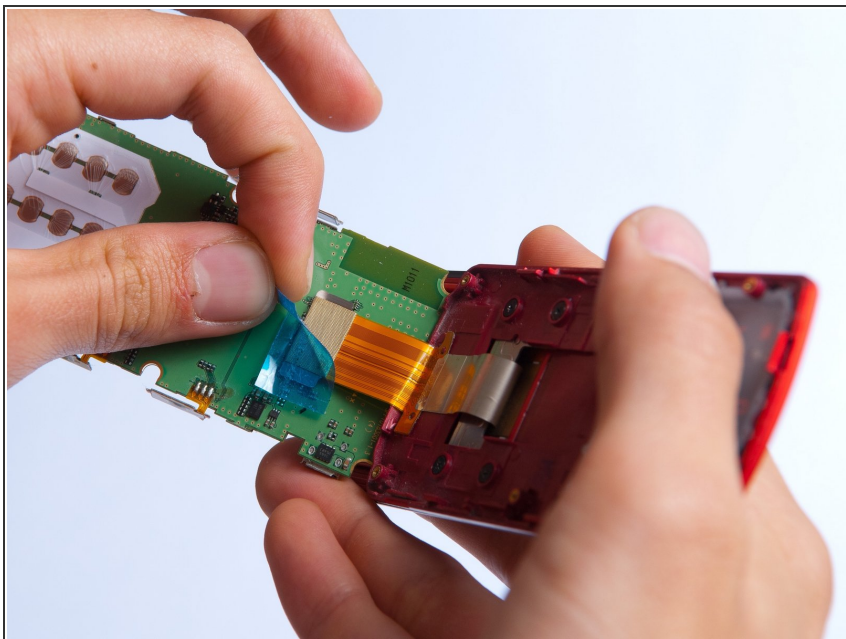
- Use the tweezers to remove the red and black wires connecting the speaker to the green motherboard by pinching the sides of the plastic base near the motherboard.
- Set the back cover with the speaker aside.

Step 7 — Motherboard



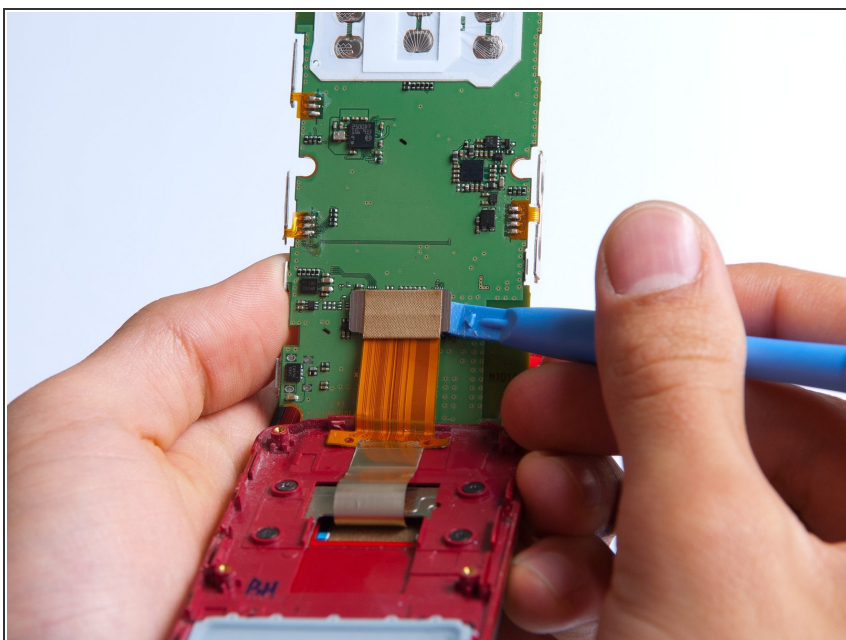
- Use the plastic opening tool to gently lift the snapped-in motherboard from the front panel.
- ⓘ An orange ribbon from the LCD is connected to the underside of the motherboard, so do not force the motherboard from the rest of the phone yet.

Step 8



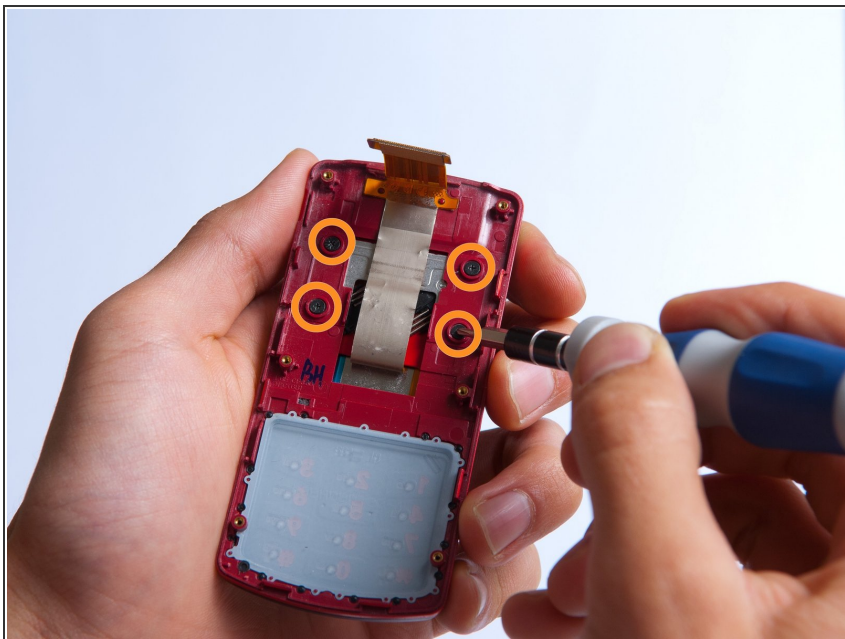
- Gently remove the blue transparent tape from the connector.

Step 9



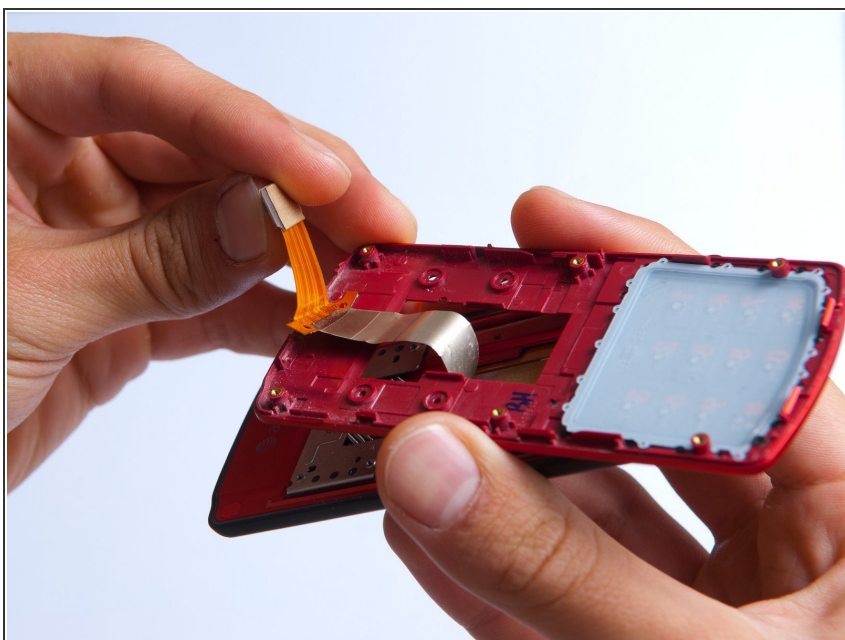
- With the plastic opening tool, gently pry the LCD connector from the motherboard.
- Set the motherboard aside.

Step 10 — Front Case



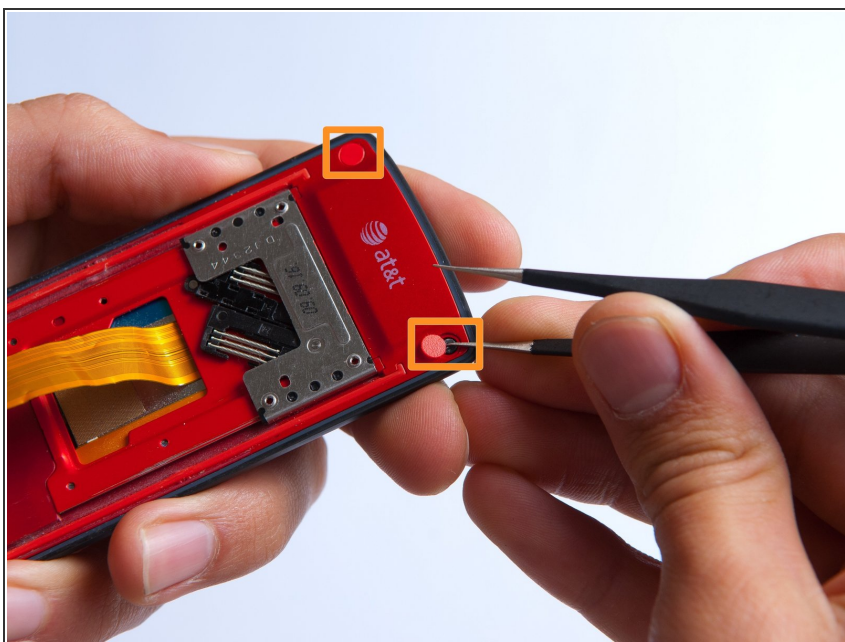
- Take the front case and unscrew the four Phillips #000 (1mm) screws around the ribbon.

Step 11



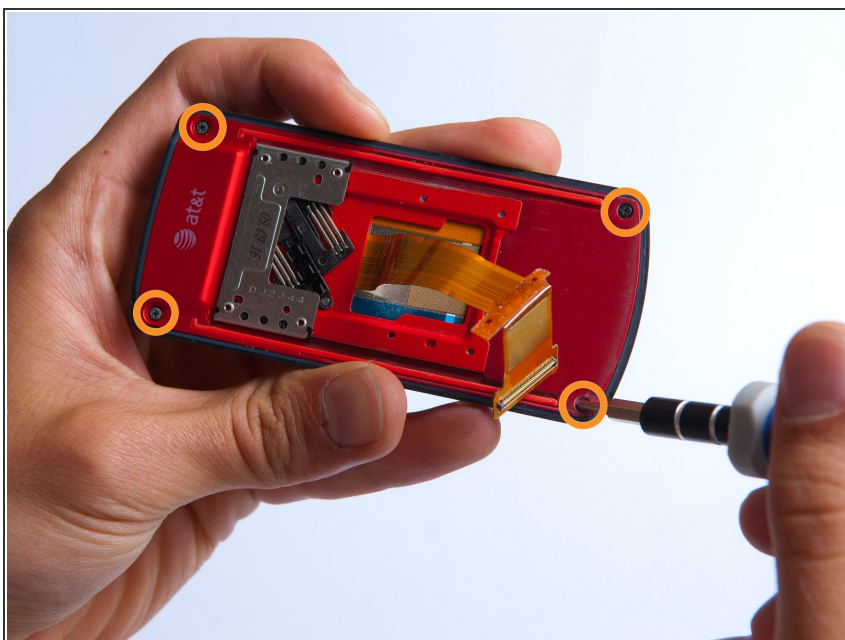
- Gently pull the orange ribbon from the number pad casing.
- *Set the number pad case to the side once it is detached from the ribbon.*

Step 12



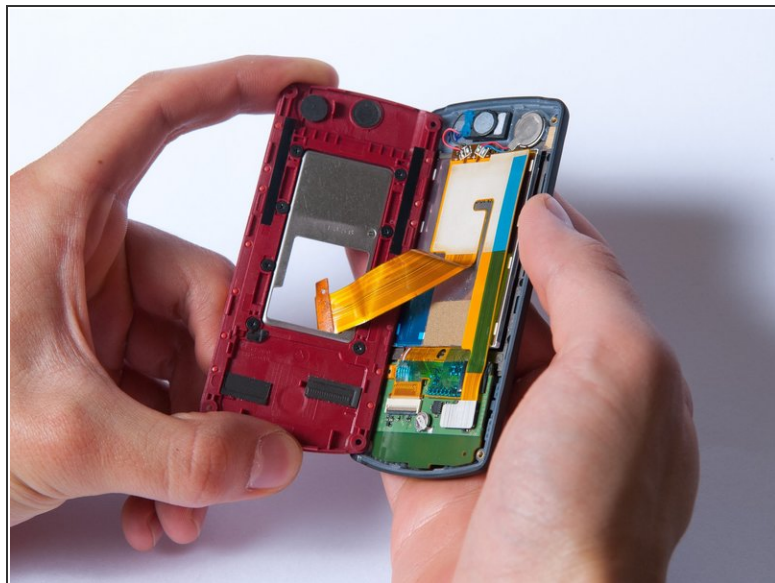
- Remove the two red sticker screw coverings at the top corners with tweezers.

Step 13



- Unscrew the four Phillips #000 (3mm) screws at the corners of the phone.

Step 14



- Pry the red sliding backing from the front cover by inserting the plastic opening tool in between the two sections and going around the entire phone.
- Set the red sliding backing and front cover to the side.

To reassemble your device, follow these instructions in reverse order.