



LG CG180 Display Replacement

Written By: Alex Jacobs



INTRODUCTION

How to remove the display screen from an LG CG180 cell phone.



TOOLS:

- [Fingers](#) (1)
 - [Phillips #00 Screwdriver](#) (1)
 - [iFixit Opening Tools](#) (1)
-

Step 1 — Battery



- Power down the cell phone by pressing and holding down the red "end call" button.

Step 2



- Turn the phone screen-down so you are looking at the back cover.

Step 3



- Slide the back cover down using your finger to remove the cover from the phone.

Step 4



- Place your finger at the top of the battery in small gap.

Step 5



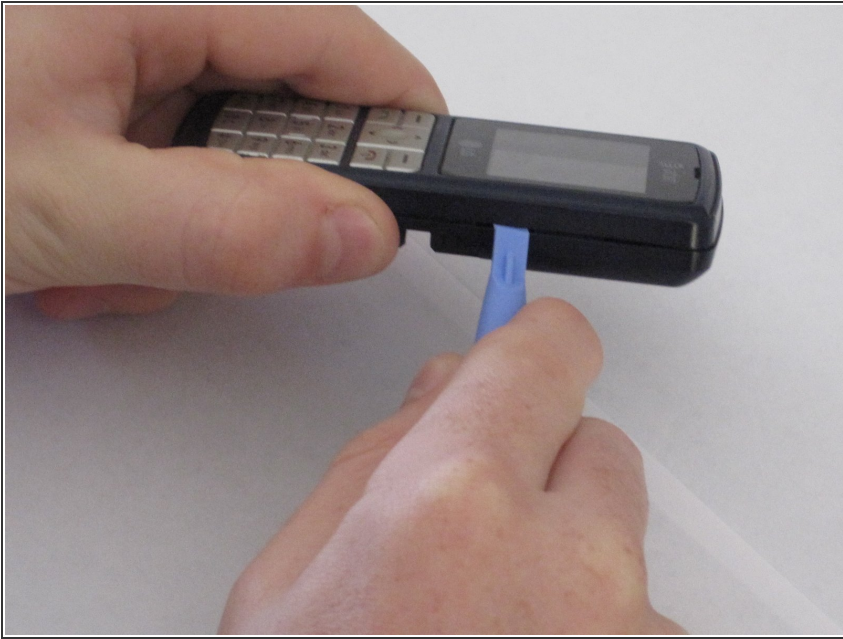
- Press downward while pulling outward to remove the battery.

Step 6 — Hardshell Case



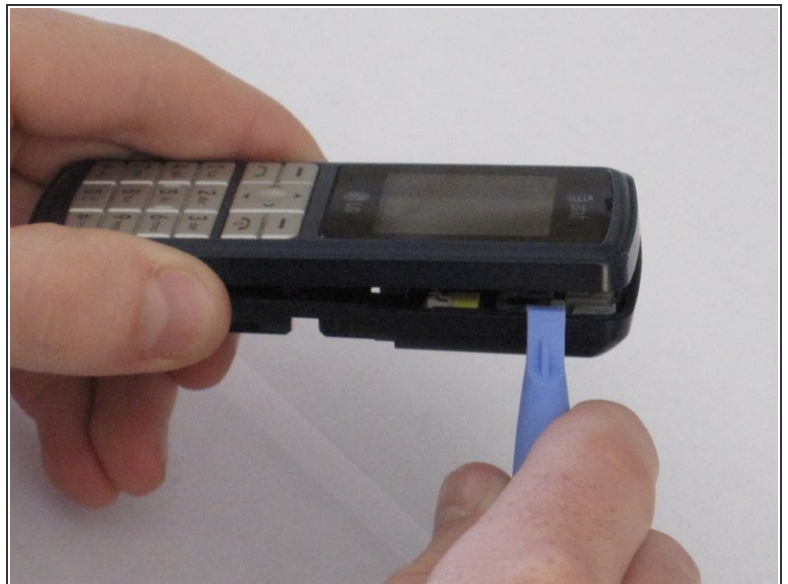
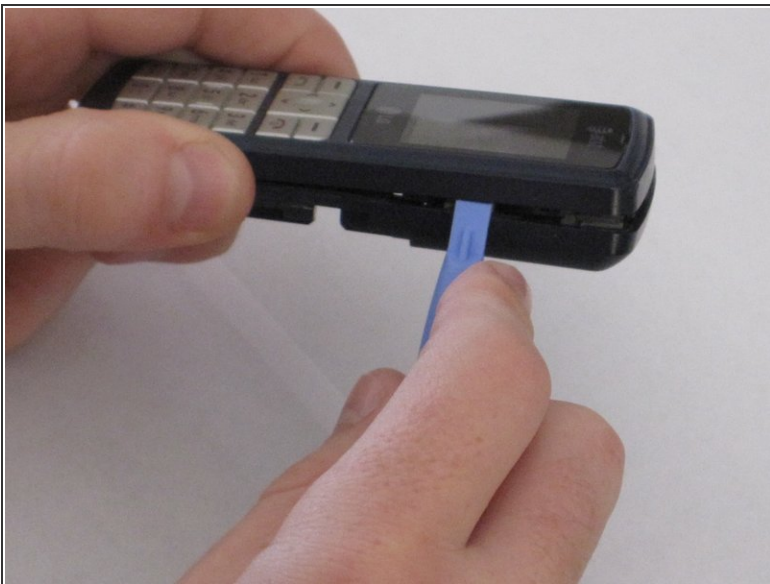
- Remove all four screws on the back of the phone using a Phillips #00 screwdriver.

Step 7



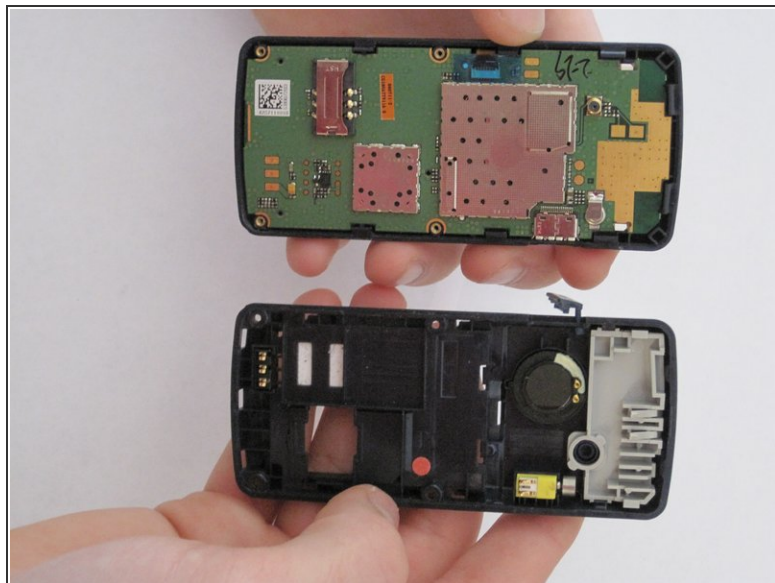
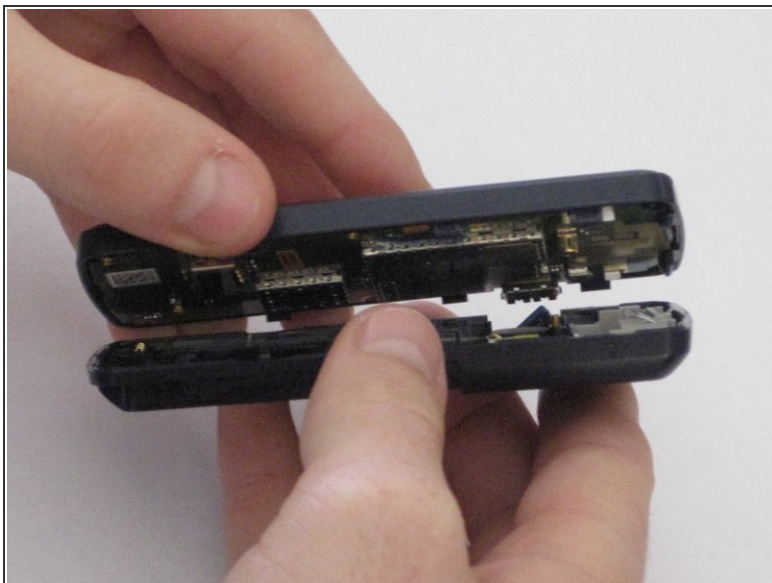
- Insert a plastic opening tool in the seam.

Step 8



- Run the tool along the seam to release all the tabs.

Step 9



- Pull the phone back cover off once all the tabs are released.

Step 10



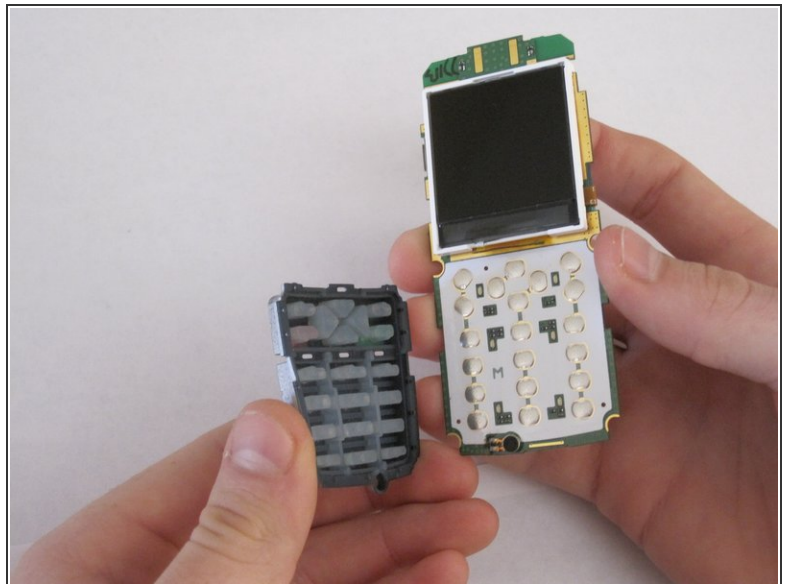
- Push the contents of the phone away from the hardshell case by applying pressure to the keypad with both thumbs.

Step 11



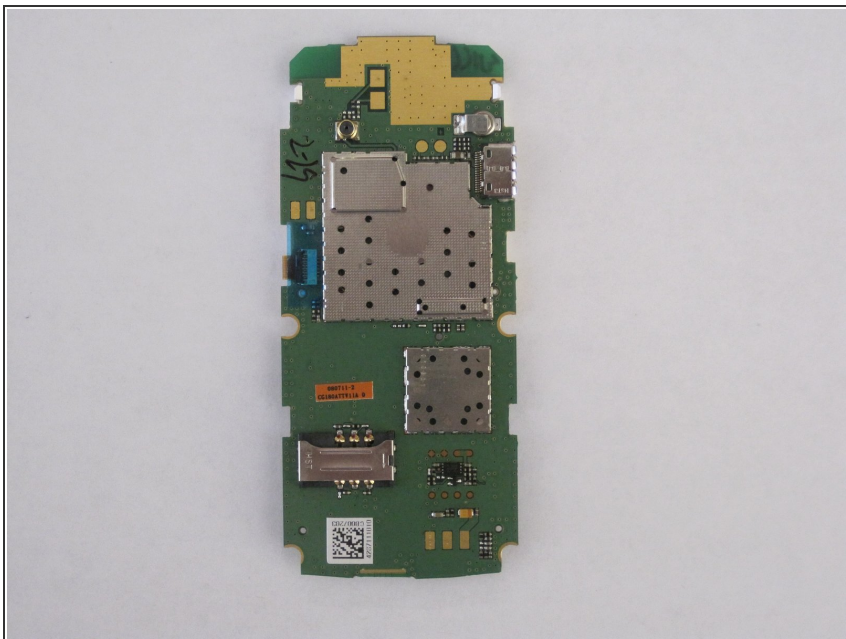
- The hardshell case is separated from the rest of the phone.

Step 12 — Keypad



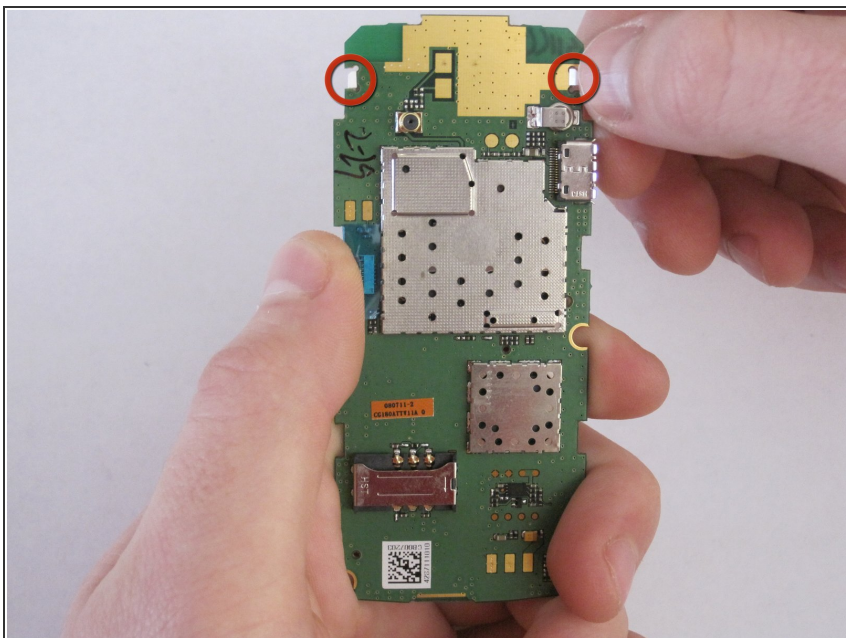
- Separate keypad from circuit board by turning it upside down and allowing it to fall off.

Step 13 — Display



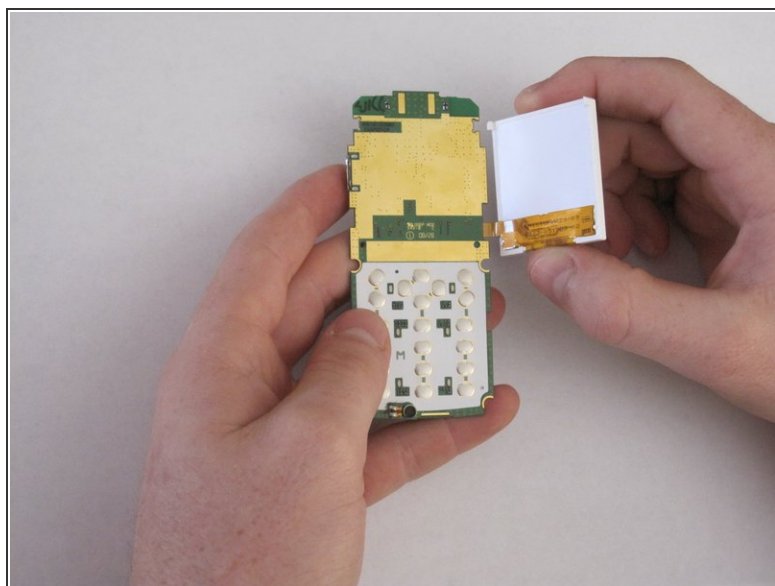
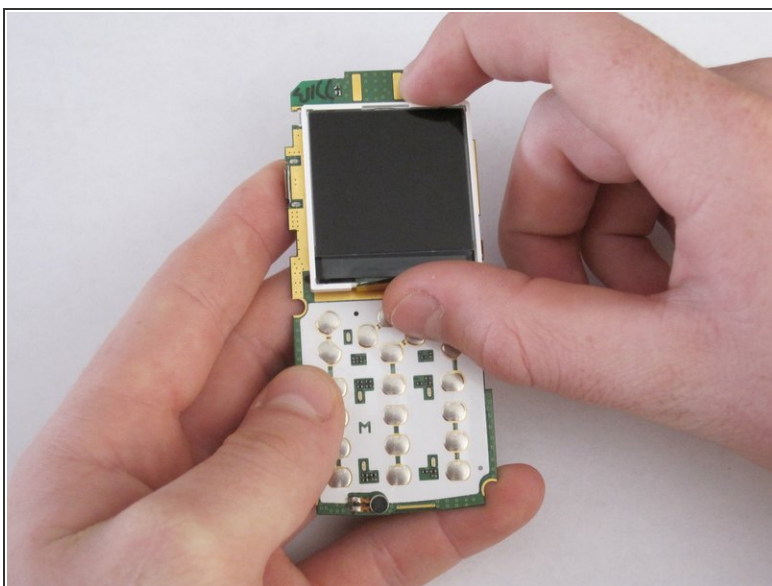
- Place the circuit board with the display facing downward.

Step 14



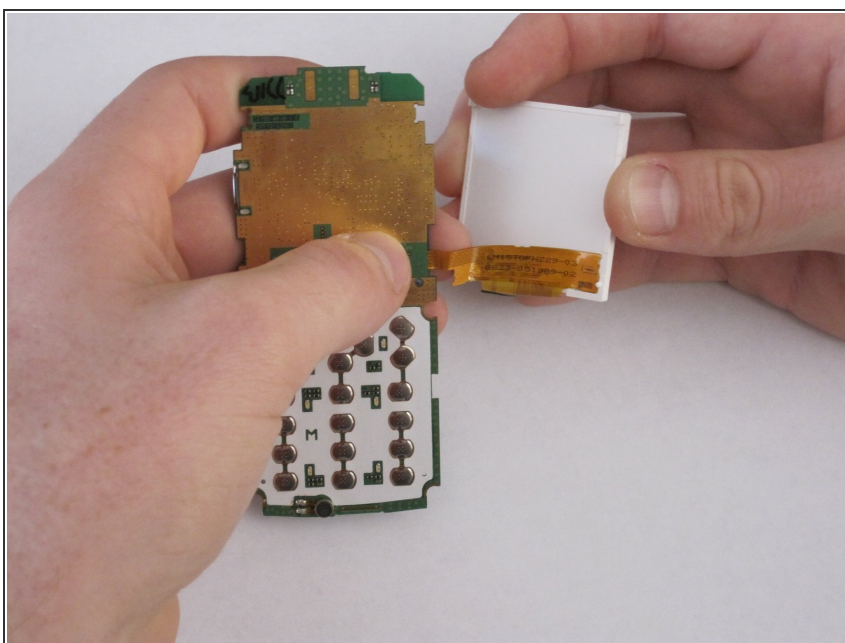
- Use thumb to release both white clips at the top of the circuit board.
- ⚠ Be careful with the display because it is still attached by electrical tape.

Step 15



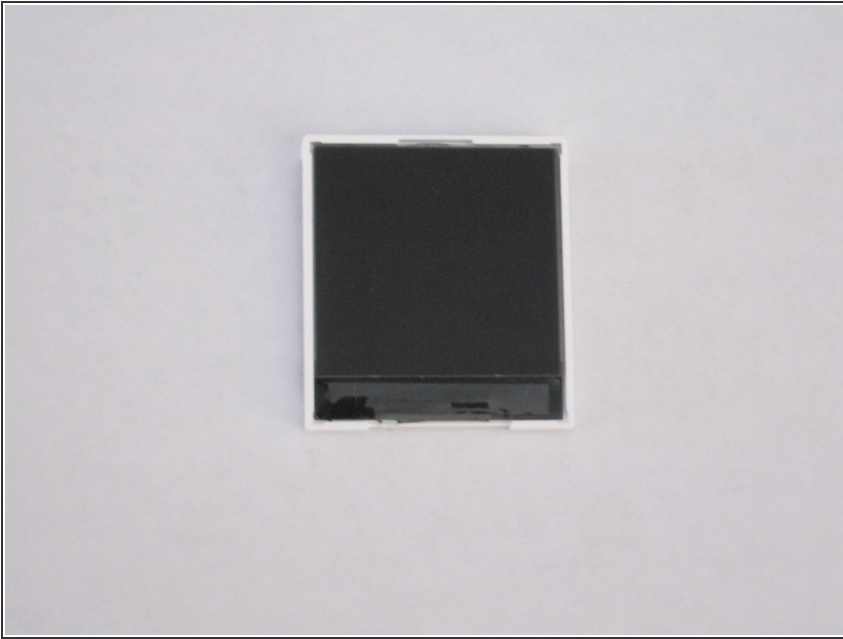
- Once both clips are released, turn over the circuit board so that the display is facing upward.
- Carefully lift the display from the left side and open to the right.

Step 16



- Carefully remove the electrical tape from the display.

Step 17



- The display is disconnected from the circuit board.

To reassemble your device, follow these instructions in reverse order.