



# LG CG180 Hardshell Case Replacement

Written By: Justin Helmer



---

# INTRODUCTION

How to remove the hardshell case from an LG CG180 cell phone.

---



## TOOLS:

- [Fingers](#) (1)
  - [Phillips #00 Screwdriver](#) (1)
  - [iFixit Opening Tools](#) (1)
-

## Step 1 — Battery



- Power down the cell phone by pressing and holding down the red "end call" button.

## Step 2



- Turn the phone screen-down so you are looking at the back cover.

### Step 3



- Slide the back cover down using your finger to remove the cover from the phone.

### Step 4



- Place your finger at the top of the battery in small gap.



## Step 5



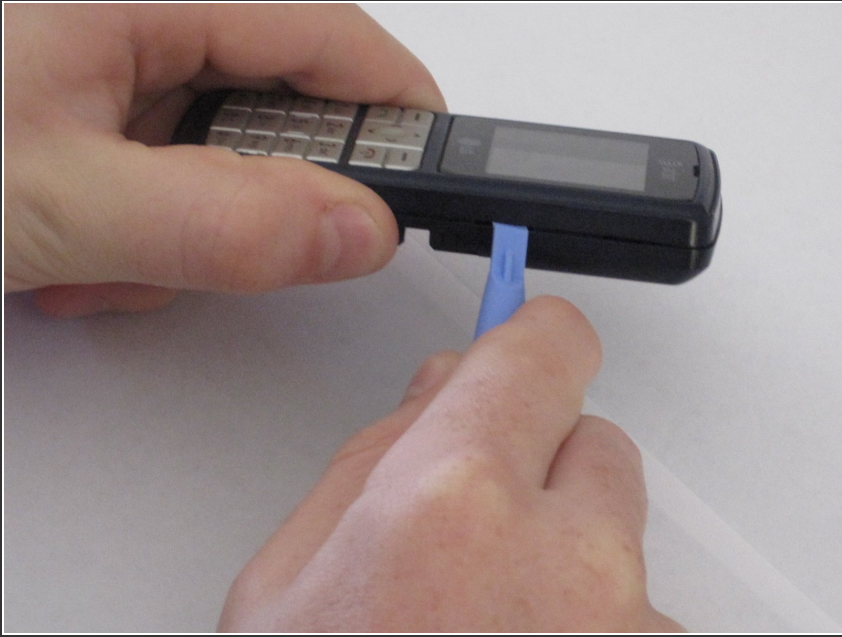
- Press downward while pulling outward to remove the battery.

## Step 6 — Hardshell Case



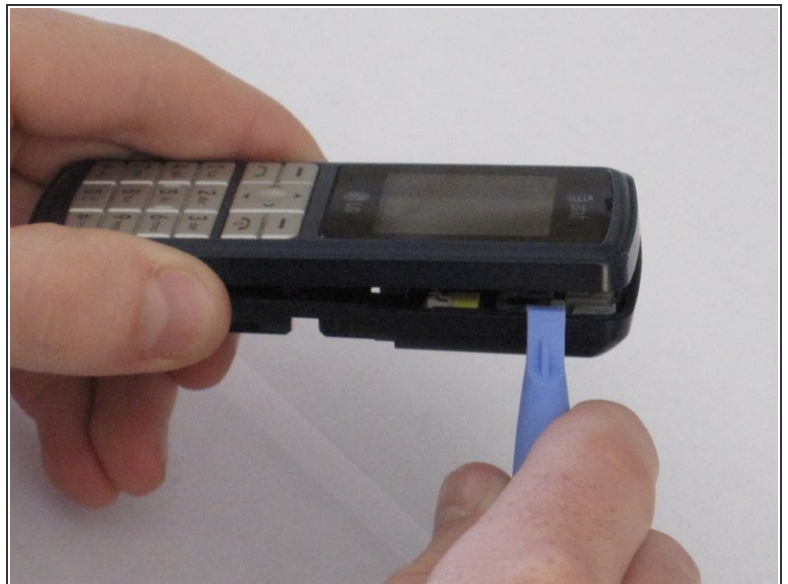
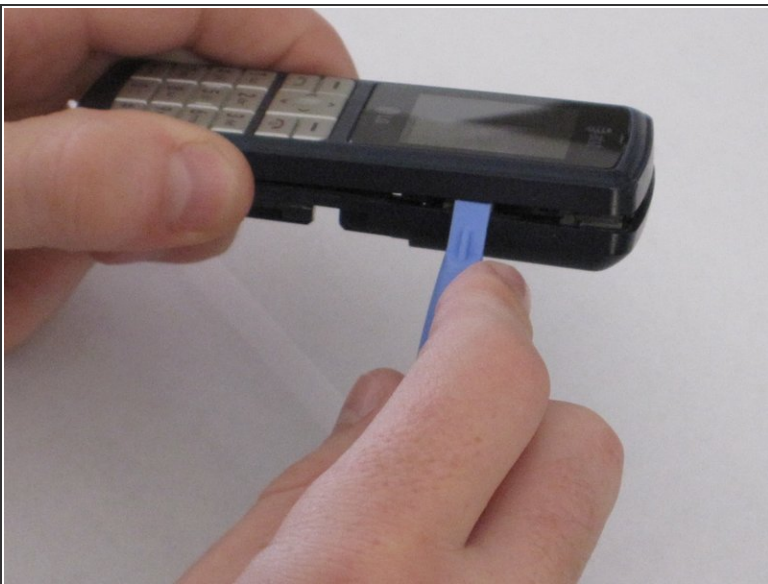
- Remove all four screws on the back of the phone using a Phillips #00 screwdriver.

## Step 7



- Insert a plastic opening tool in the seam.

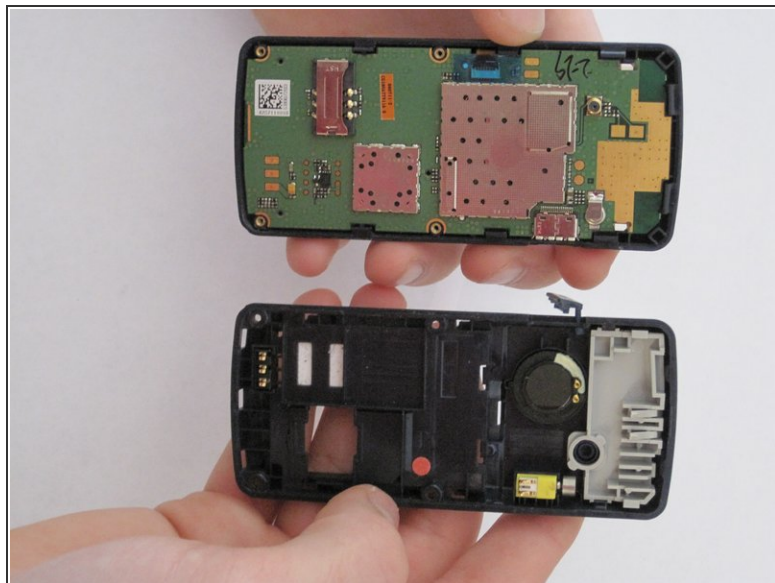
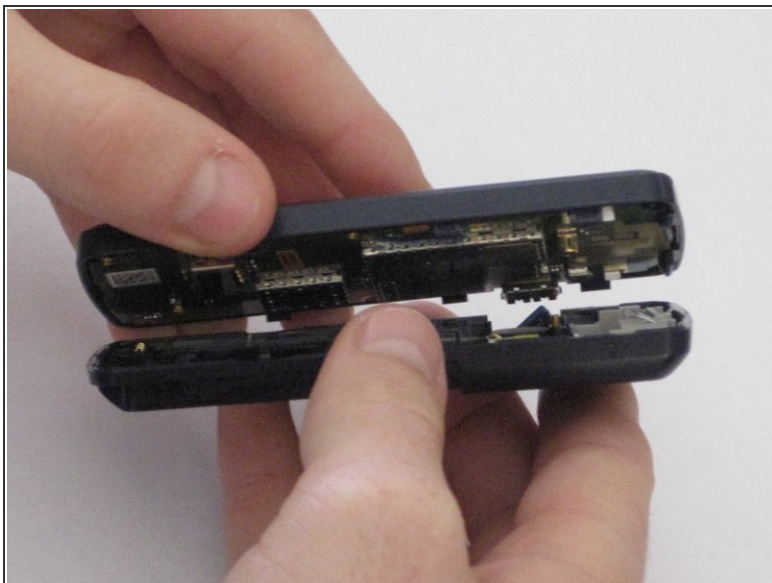
## Step 8



- Run the tool along the seam to release all the tabs.



## Step 9



- Pull the phone back cover off once all the tabs are released.

## Step 10



- Push the contents of the phone away from the hardshell case by applying pressure to the keypad with both thumbs.

## Step 11



- The hardshell case is separated from the rest of the phone.

To reassemble your device, follow these instructions in reverse order.