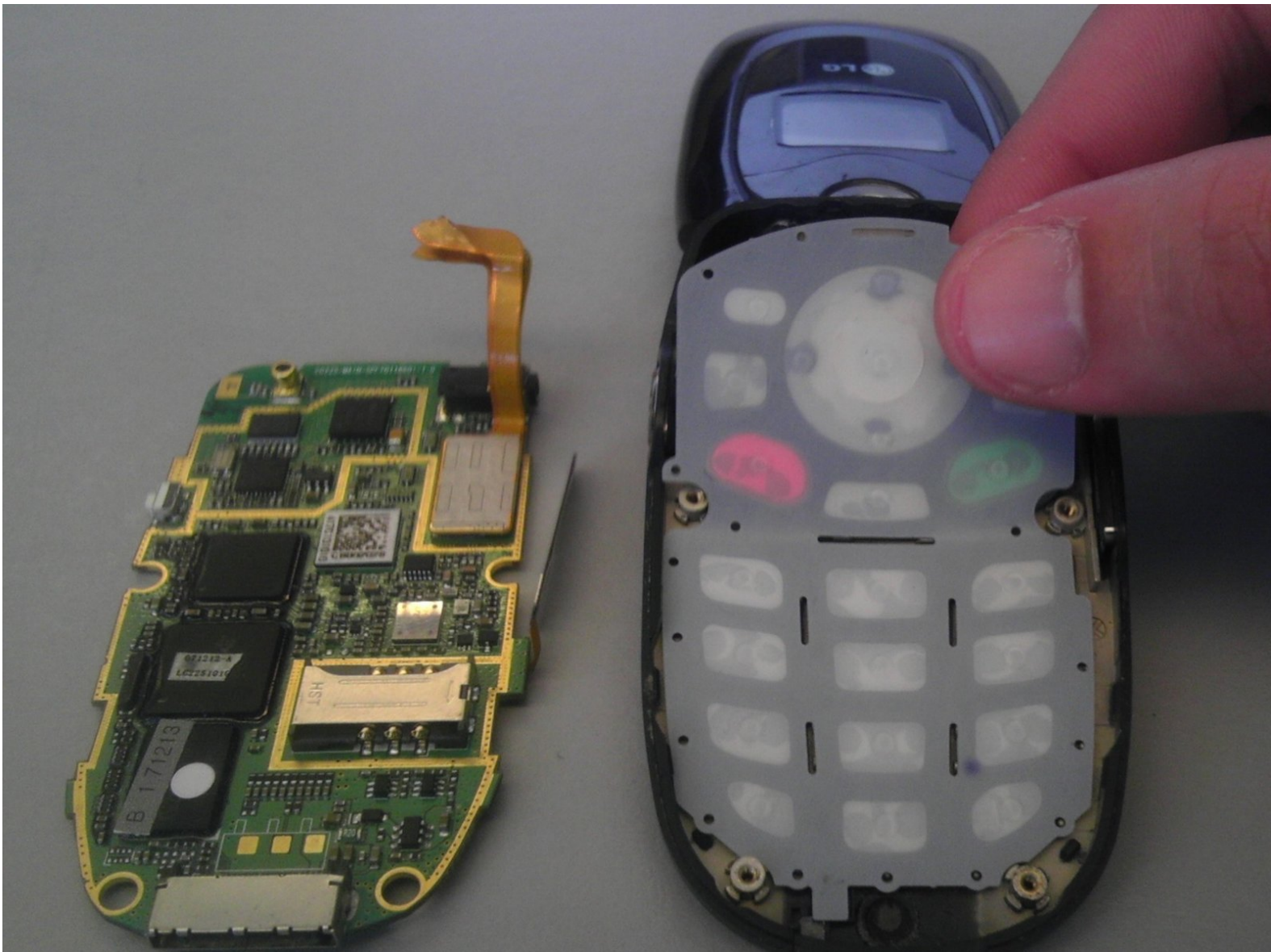




LG CG225 Keyboard Replacement

Replace the keyboard on your LG CG225.

Written By: Mackenzie



INTRODUCTION

Use this guide to replace the keyboard of the LG CG225.



TOOLS:

- [Phillips #00 Screwdriver](#) (1)
 - [Fingers](#) (1)
 - [iFixit Opening Tools](#) (1)
-

Step 1 — Rear Cover



- Using a spudger or plastic opening tool, pry off the screw cover near the phone's antenna.

Step 2



- Remove a single Phillips #00 screw from beneath the cover.

Step 3



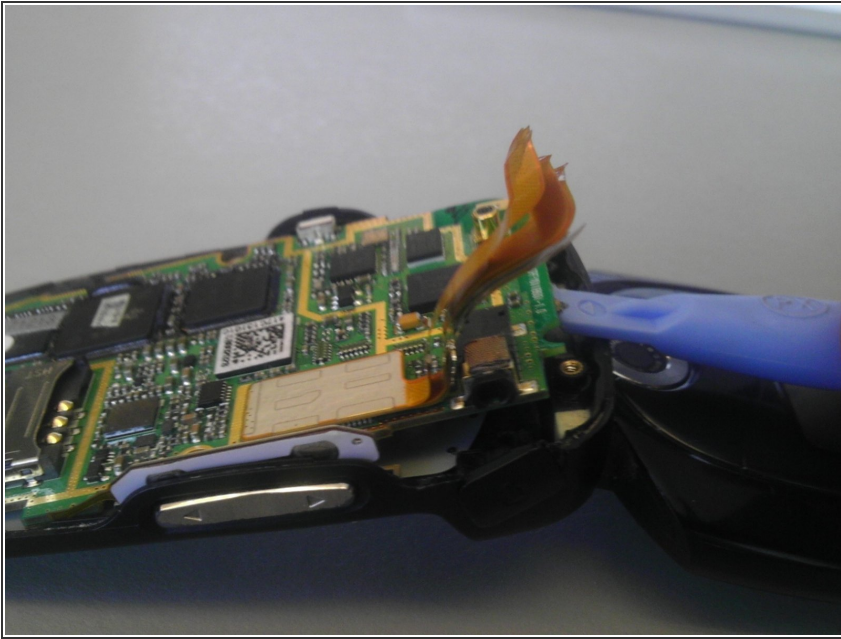
- Starting at the seam near the antenna, use a plastic opening tool to gently pry the back plate from the phone.

Step 4 — Motherboard



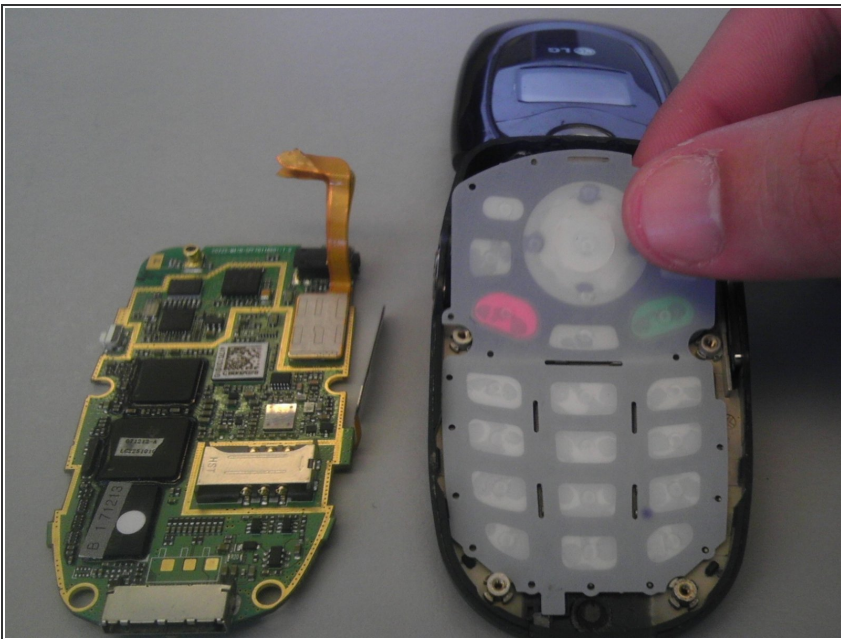
- Carefully disconnect the gold ribbon cable from the upper right corner of the motherboard.

Step 5



- Using a small plastic opening tool, remove the motherboard.

Step 6 — Keyboard



- Using your fingers, remove the plastic keyboard.
- ⚠ Loose buttons will sometimes fall off of the keyboard when it is removed.

To reassemble your device, follow these instructions in reverse order.