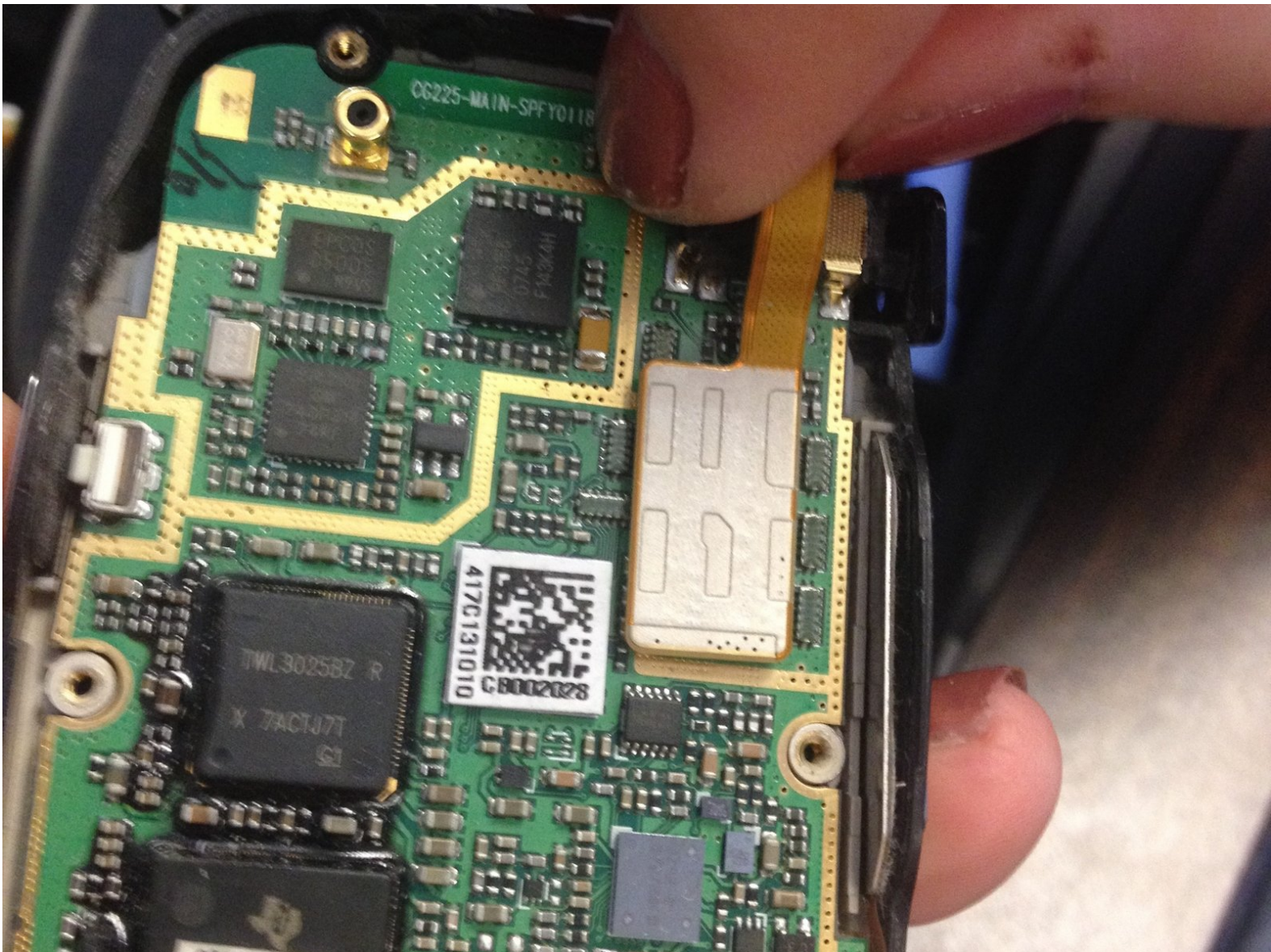




LG CG225 Motherboard Replacement

Replace the motherboard of your LG CG225.

Written By: Darlena



INTRODUCTION

This guide explains how to remove the motherboard from your LG CG225.



TOOLS:

- [Phillips #00 Screwdriver](#) (1)
 - [iFixit Opening Tools](#) (1)
-

Step 1 — Rear Cover



- Using a spudger or plastic opening tool, pry off the screw cover near the phone's antenna.

Step 2



- Remove a single Phillips #00 screw from beneath the cover.

Step 3



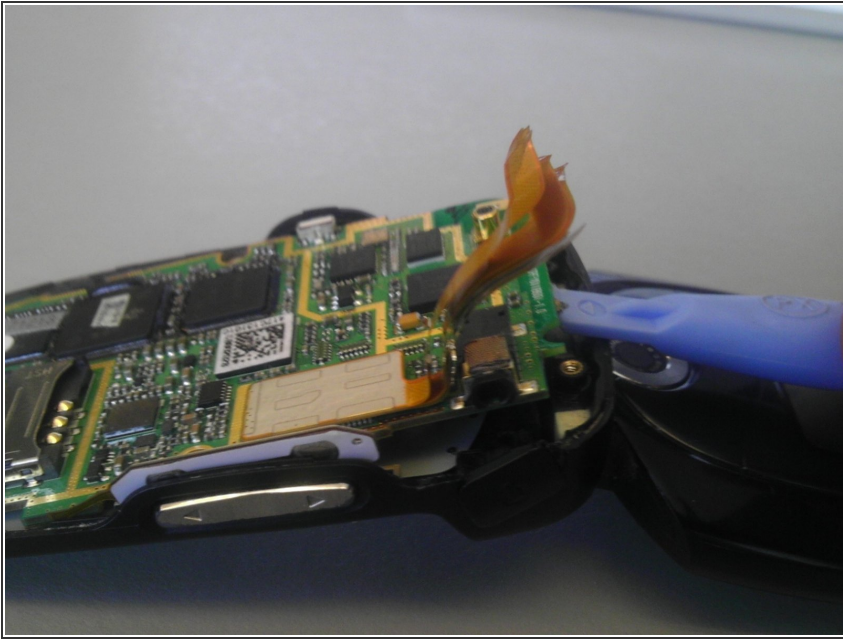
- Starting at the seam near the antenna, use a plastic opening tool to gently pry the back plate from the phone.

Step 4 — Motherboard



- Carefully disconnect the gold ribbon cable from the upper right corner of the motherboard.

Step 5



- Using a small plastic opening tool, remove the motherboard.

To reassemble your device, follow these instructions in reverse order.