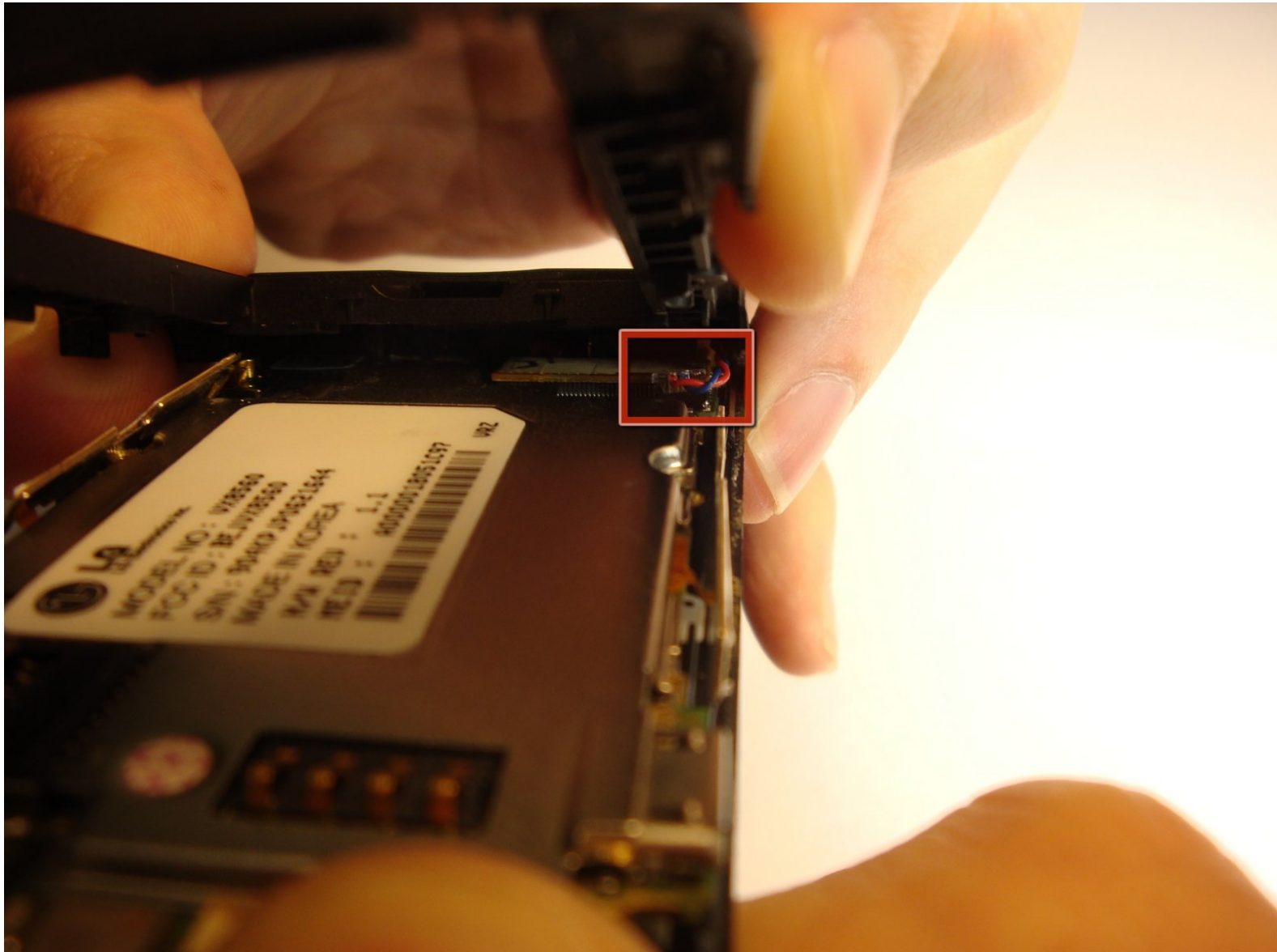




# LG Chocolate 3 Display Connector Replacement

If the display does not turn on, then follow this guide to make sure it is properly connected.

Written By: Mitchel

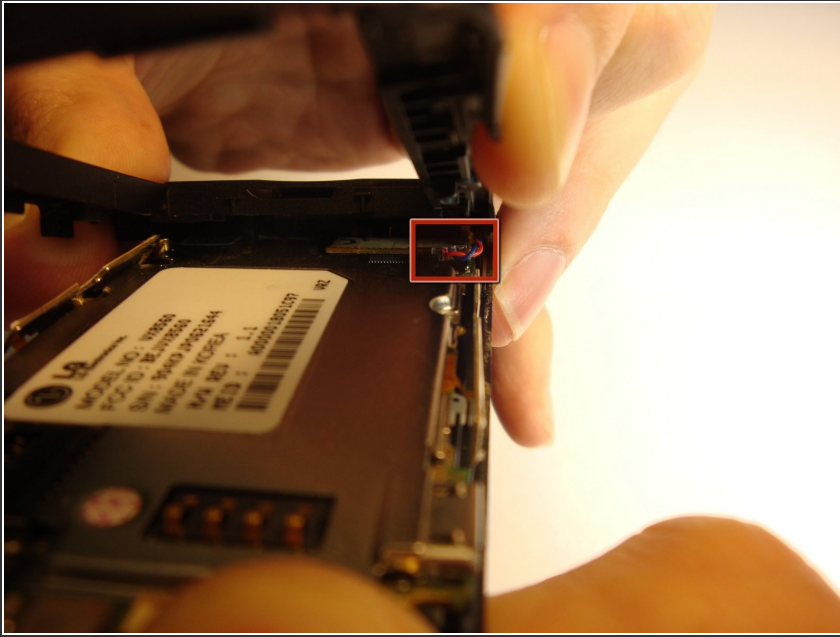




## TOOLS:

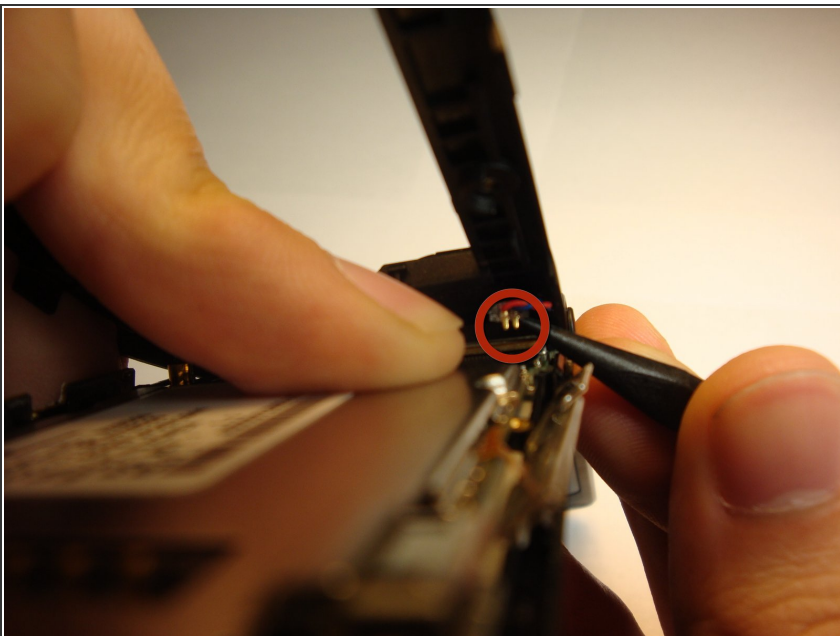
- [Spudger](#) (1)
-

## Step 1 — Display Connector



- Remove the battery and expose the motherboard following the [General Disassembly LG VX8560](#). You will have to replace the side keys once finished with this guide.
- Locate intertwined blue and red wire (screen display connector.)

## Step 2



- (Ignore this step if the screen display connector is already separated from the motherboard) Using the spudger, place the pointy end between the plastic end of the wire and the motherboard and lift/push wire from the motherboard socket. You should see two golden pins protruding from the plastic.

- 
- Align the two golden pins at the end of the wire with its respective socket on the motherboard and gently push down until you hear a click-sound.
  - To reassemble your device, follow [Side Keys Installation](#) in reverse order.
-