



# LG Chocolate 3 Front Faceplate Replacement

Replace the front faceplate for an LG Chocolate 3.

Written By: Brenna Yagade



---

## INTRODUCTION

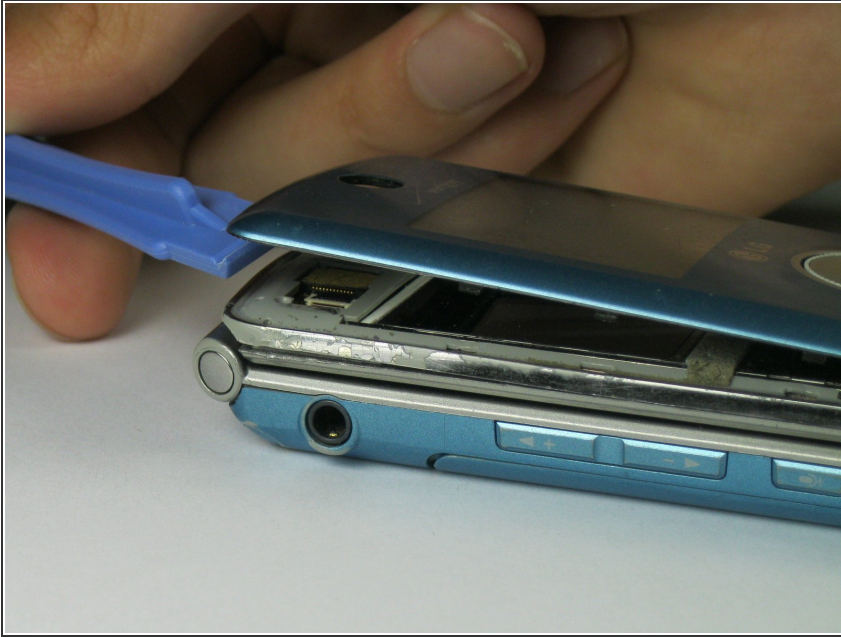
Use this guide to replace the front faceplate of your LG Chocolate 3. Be patient in removing adhesive and mindful of fragile parts.

---

### **TOOLS:**

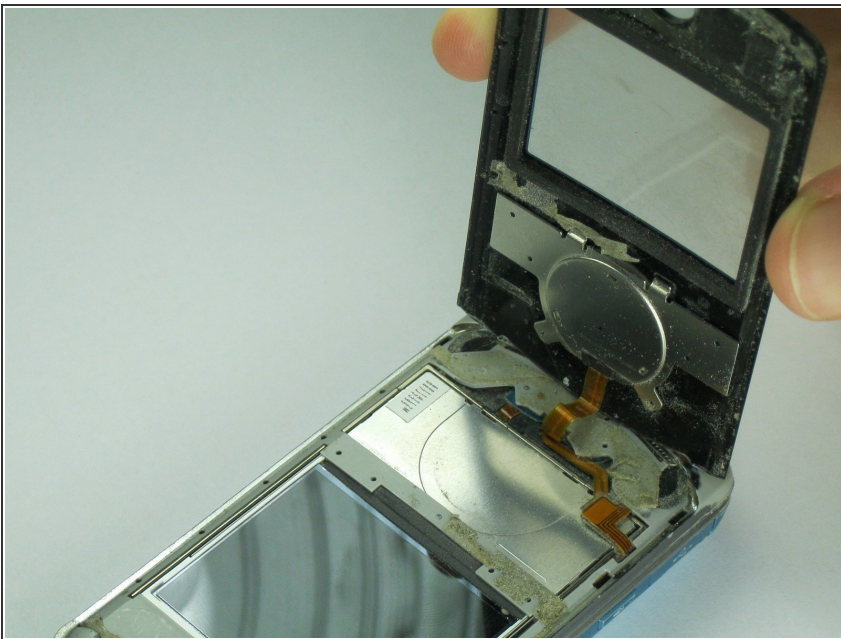
- [Spudger](#) (1)
  - [iFixit Opening Tools](#) (1)
-

## Step 1 — Front Faceplate



- Use the plastic opening tool to lift the front faceplate from the device.
- ⓘ The faceplate has adhesive in multiple areas. Loosen the faceplate around all of the edges first to make it easier to remove.

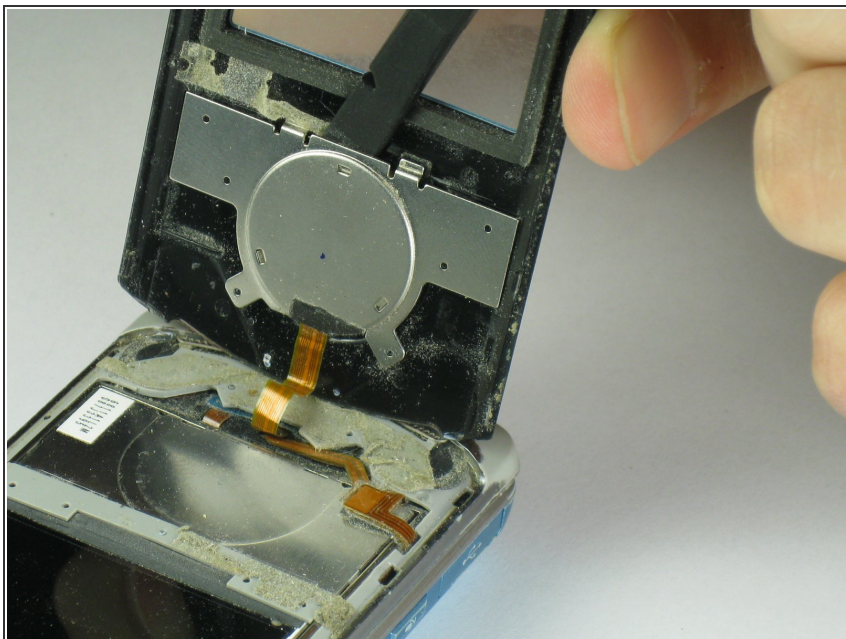
## Step 2



- ⚠ The scroll wheel has an orange display data cable attached which may rip from excessive force.
- Lift the front faceplate up gently.



### Step 3



- ⚠ Be careful not to rip the orange display data cable or drop the scroll wheel on the LCD screen.
- Use the flat end of the spudger to pry the scroll wheel from the faceplate.

### Step 4



- Separate the front faceplate from the device completely.

To reassemble your device, follow these instructions in reverse order.