



LG Chocolate 3 Rear Case Replacement

Replace the rear case of an LG Chocolate 3.

Written By: Brenna Yagade



INTRODUCTION

Use this guide to replace a damaged or cracked rear case. Be prepared to manage small screws.

TOOLS:

- [Spudger](#) (1)
 - [Phillips #1 Screwdriver](#) (1)
 - [Tweezers](#) (1)
-

Step 1 — Battery



- ❗ Turn the phone off before starting the replacement process.
- Place the phone face down.
- Press your finger down on the indentation and slide the back plate off.

Step 2



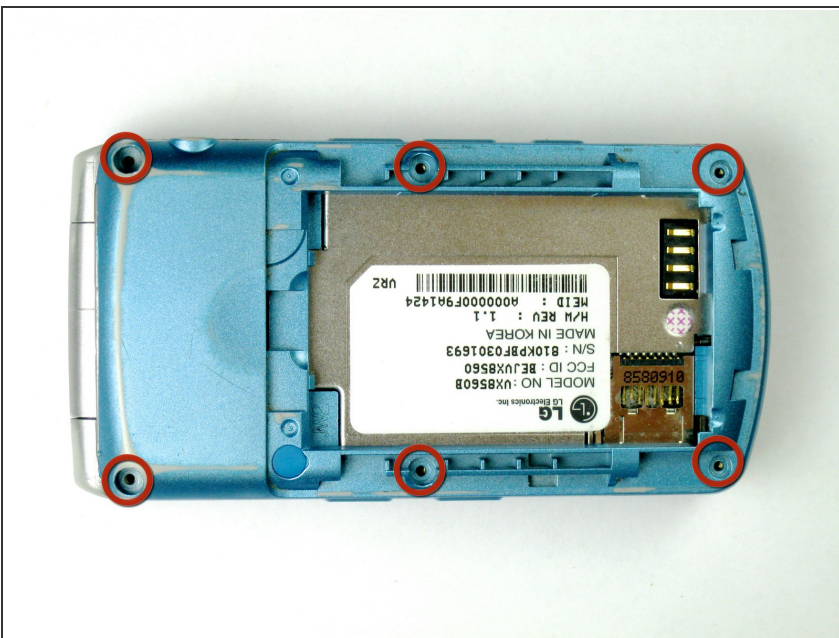
- Using your index finger lift and remove the battery from the phone.

Step 3 — Rear Case



- Use the pointed end of the spudger to pull out the plastic inserts that are located on the left and right-hand corners.
- ⓘ If needed, use the tip of a push pin instead of the spudger to remove the plastic inserts.

Step 4



- Using a Phillips #00 screwdriver, remove the six 3mm long screws found along the edges of the phone.
- ⓘ If needed, use tweezers to remove loose screws from the recessed holes.
- ⚠ Screws are small, therefore, they should be placed in a secure location to prevent misplacement.

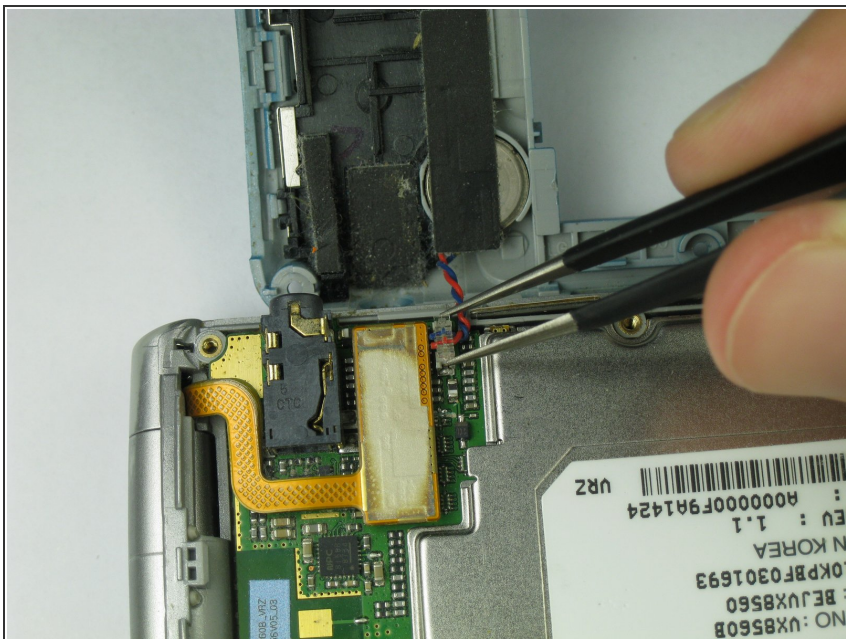
Step 5



- Pull the rear case up using the spudger.

- ⚠ The rear case is connected to the right side of the phone via red and blue cables, be careful not to pull these cables out.
- ✦ The volume control buttons on the side might fall out of their sockets. Carefully replace them with a pair of tweezers before you reassemble the rear case.

Step 6



- Use tweezers to pull the clear end of the red and blue speaker cables away from motherboard.

Step 7



- Carefully remove the rear case from the phone.

To reassemble your device, follow these instructions in reverse order.