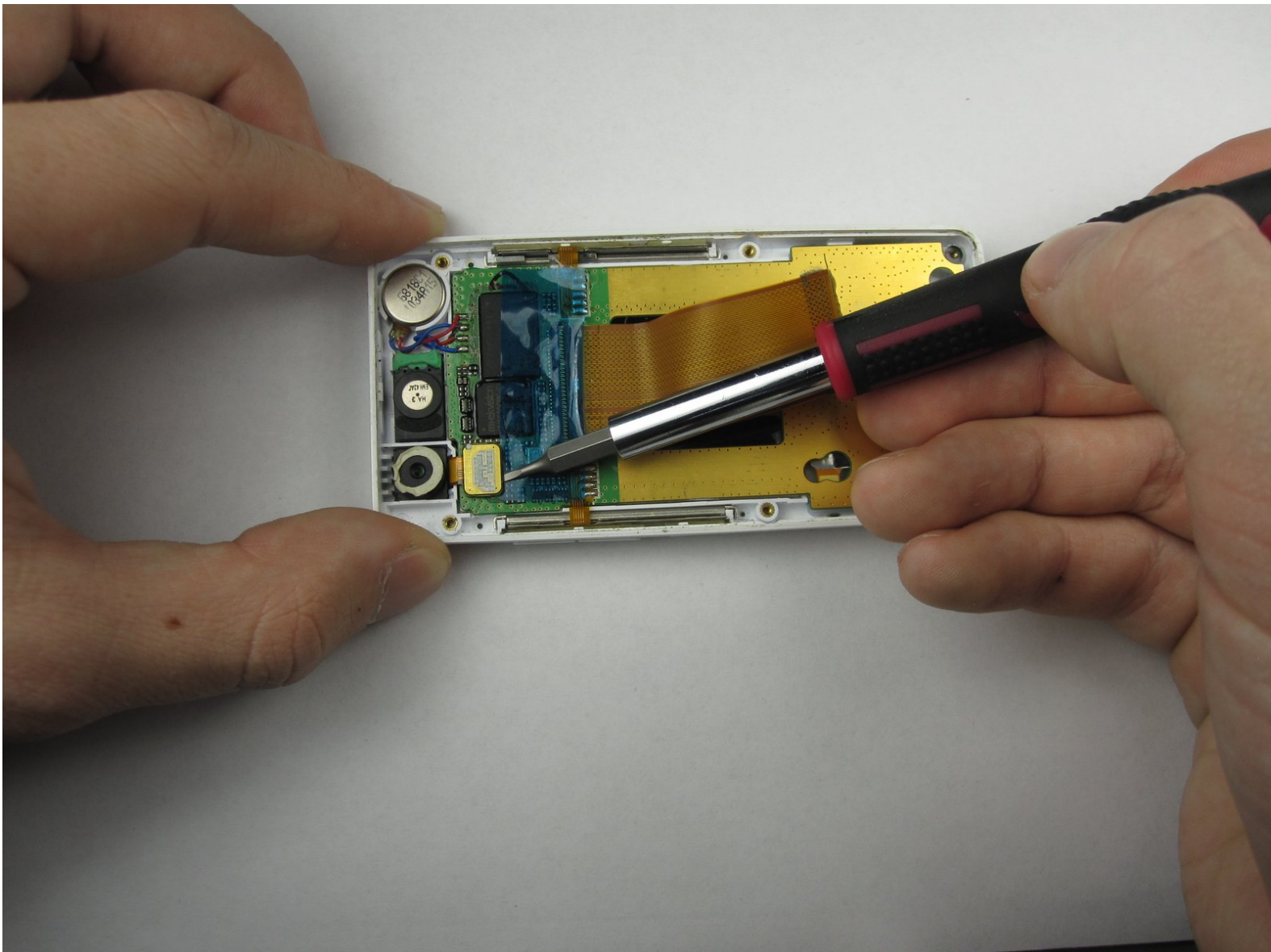




LG Chocolate Camera Replacement

Replace the camera in the back of your LG Chocolate phone

Written By: Thomas

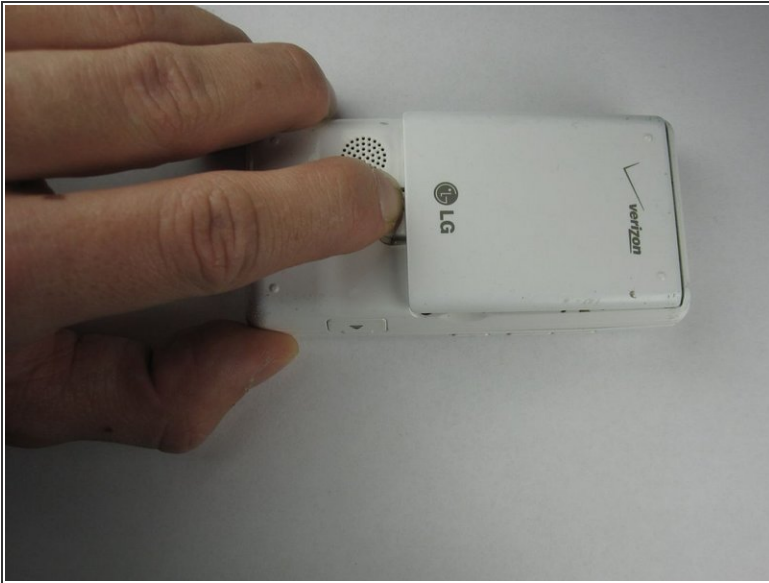




TOOLS:

- [Flathead Screwdriver](#) (1)
-

Step 1 — Battery



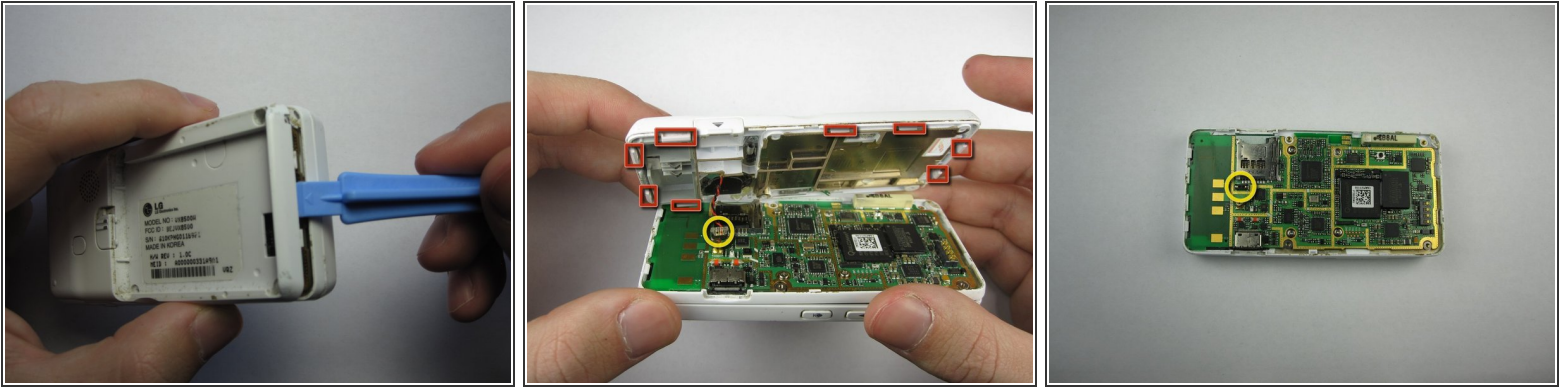
- Find a sliding button on the lower back side of the device and with your finger, slide it to the left firmly.
- ⓘ The battery should pop out fairly easily. If not, slide the button further or grab and pull it while sliding the button.

Step 2 — Back Cover



- Unscrew the four Phillips 00 screws on the four corners under the battery to unfasten the back case from the phone.

Step 3



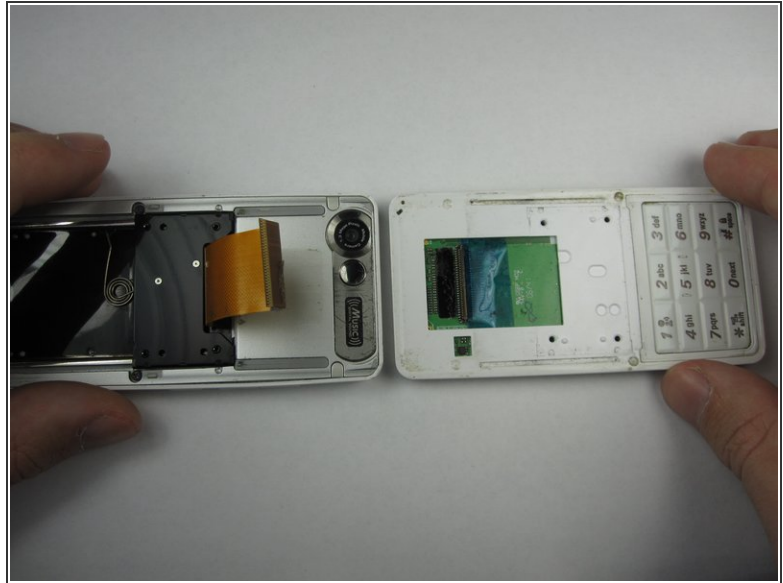
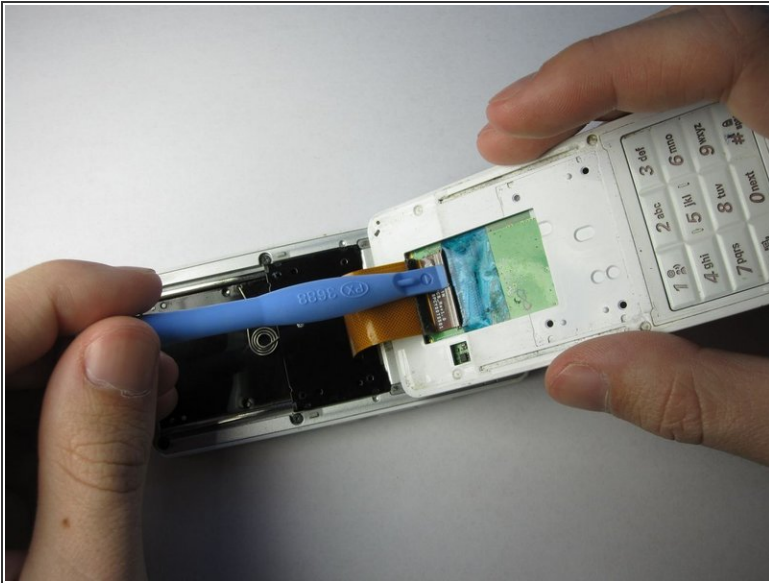
- Pry the case off using a plastic opening tool.
- Continue working the plastic opening tool around the sides of the device, unhooking the eight tabs securing the back cover to the rest of the phone as shown in the second photo.
- The back speaker will be connected to the motherboard, and must be disconnected to remove the case.

Step 4 — Sliding Front



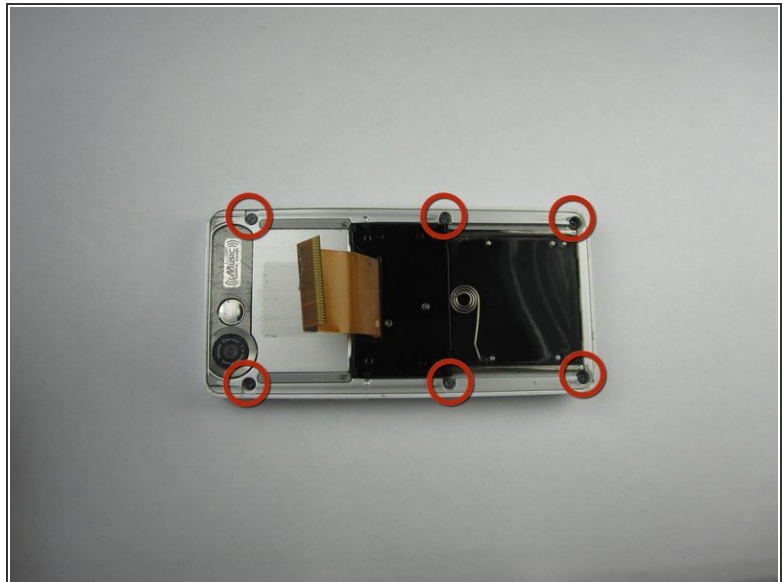
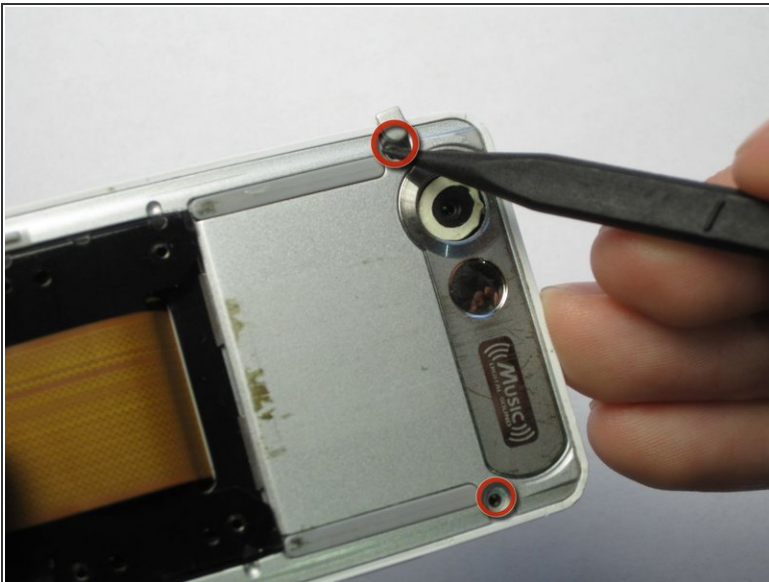
- Unscrew the 4 Phillips 00 screws that connect the two halves of the phone together.

Step 5



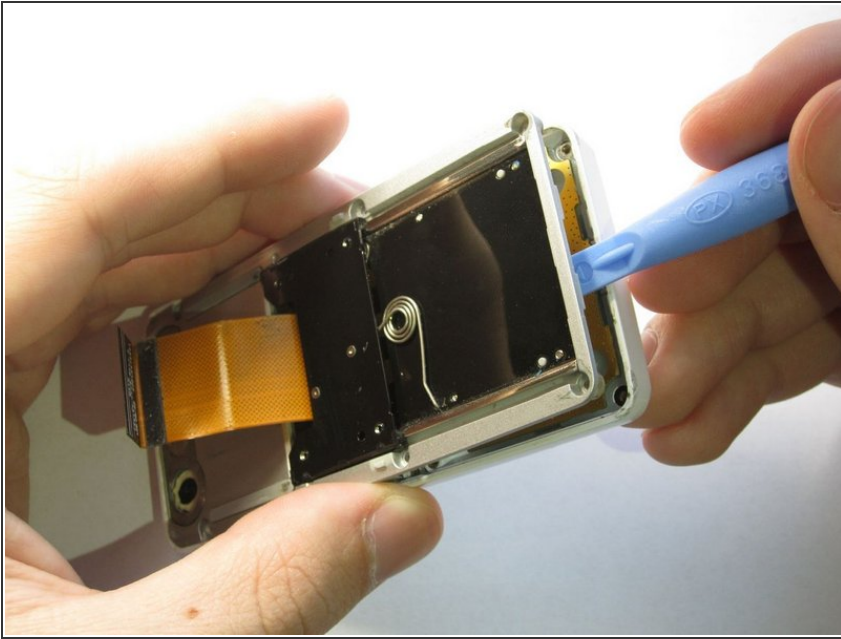
- Between the two halves is a ribbon. Use a plastic opening tool to flip up the lock and disconnect it.

Step 6



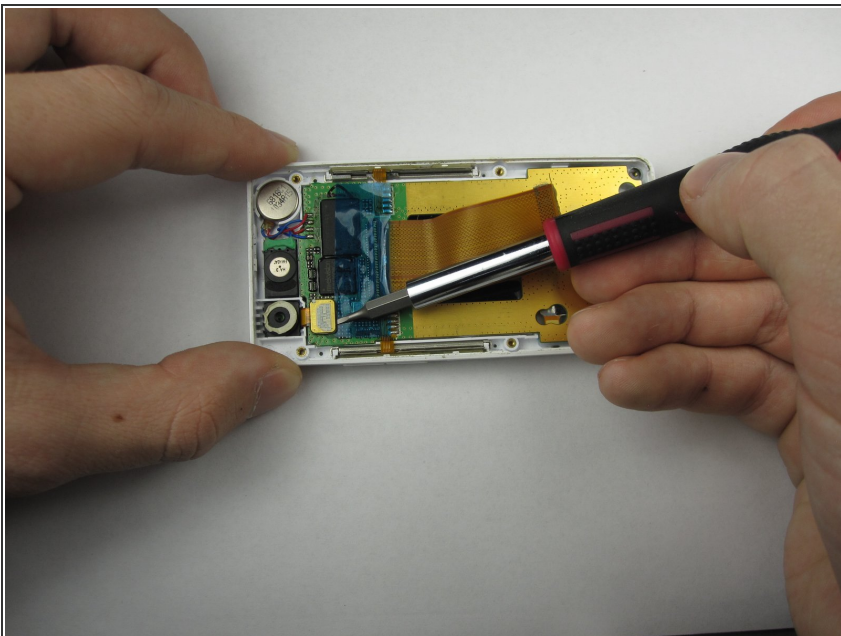
- Pry off the plastic tabs that cover two screws, as shown in the first picture.
- Then, remove the 6 Phillips 00 screws from the back of the case, as shown in the second picture.

Step 7



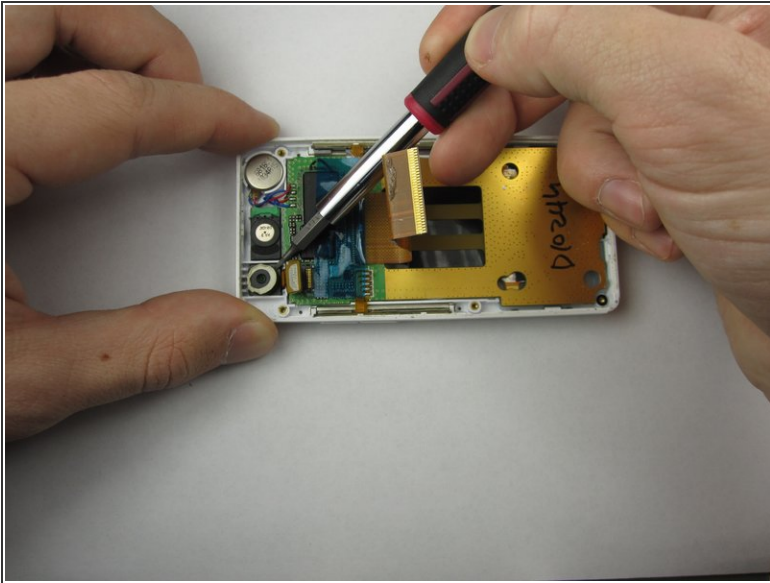
- Pry off the back cover from the front of the case using a plastic opening tool.

Step 8 — Camera



- Carefully pry the connecting cable between the camera and the motherboard off of the board.

Step 9



- Using a small screwdriver, carefully pry the camera out of its position.
- The camera will seem stuck to the board because of its tape. Don't be afraid to pry it.

To reassemble your device, follow these instructions in reverse order.