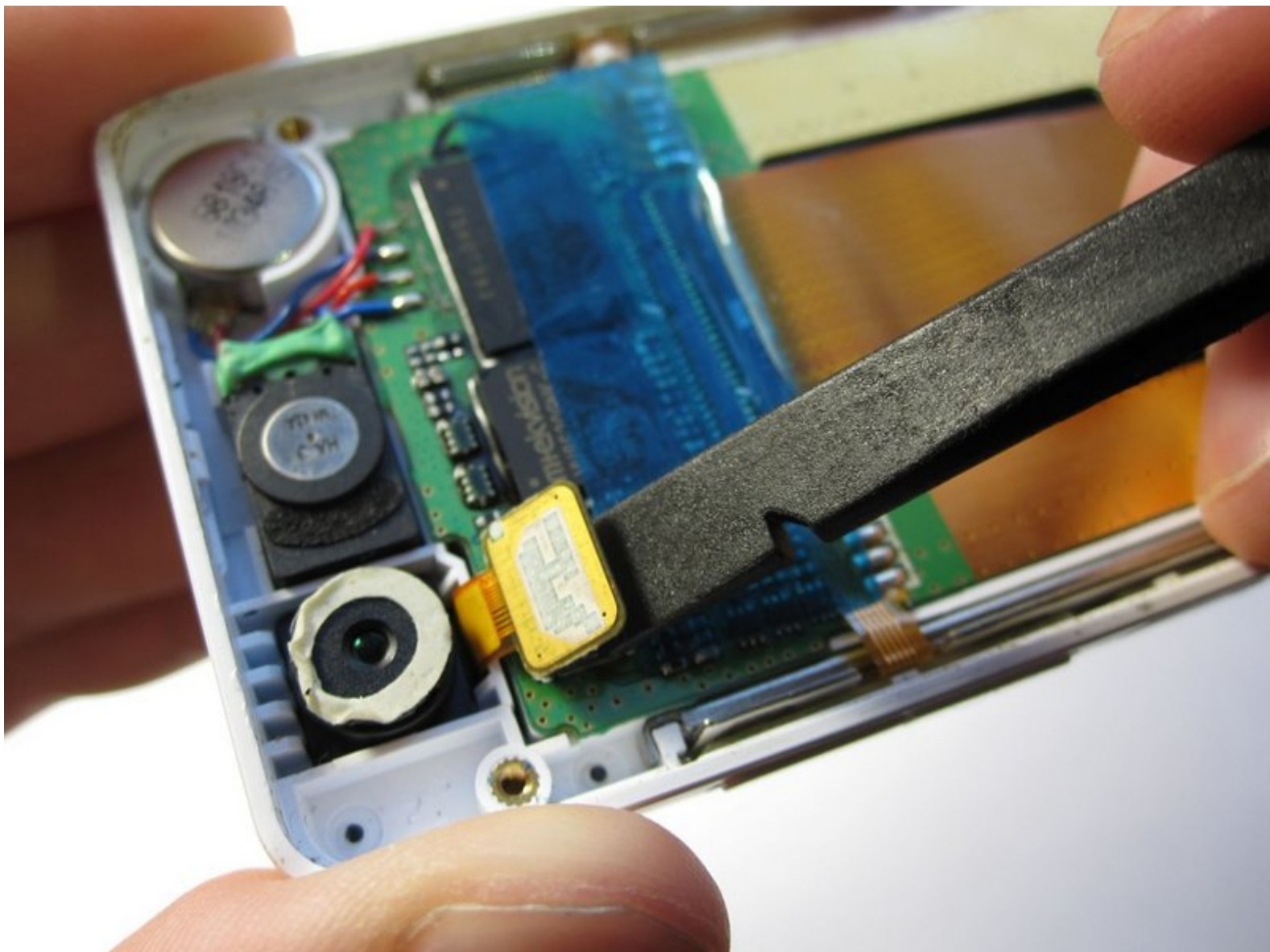




LG Chocolate LCD Board Replacement

Remove the LCD Board (behind the screen, camera, and side buttons).

Written By: Thomas



INTRODUCTION

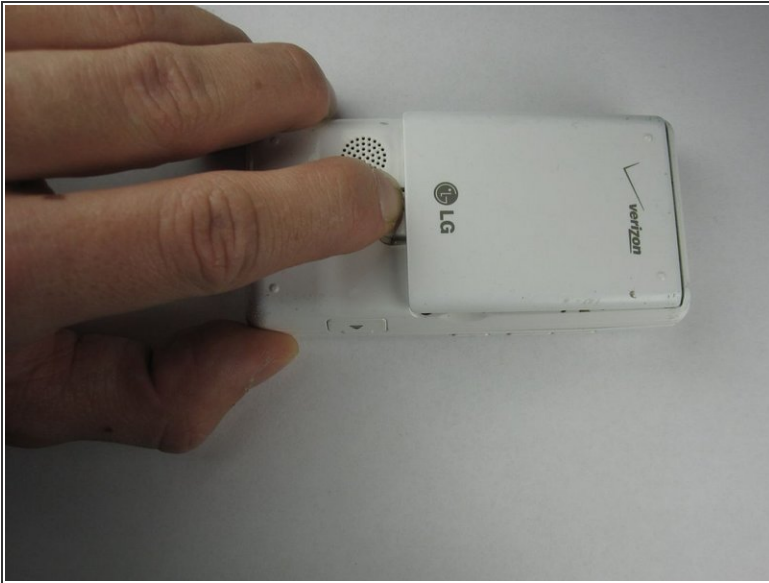
Outline what you are going to teach someone how to do.



TOOLS:

- [Phillips #00 Screwdriver](#) (1)
-

Step 1 — Battery



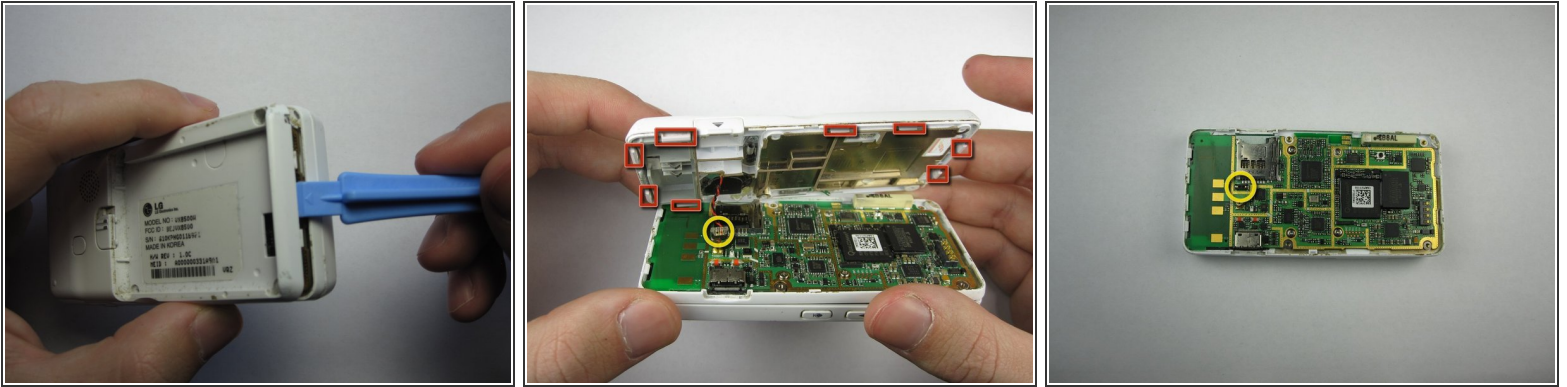
- Find a sliding button on the lower back side of the device and with your finger, slide it to the left firmly.
- ⓘ The battery should pop out fairly easily. If not, slide the button further or grab and pull it while sliding the button.

Step 2 — Back Cover



- Unscrew the four Phillips 00 screws on the four corners under the battery to unfasten the back case from the phone.

Step 3



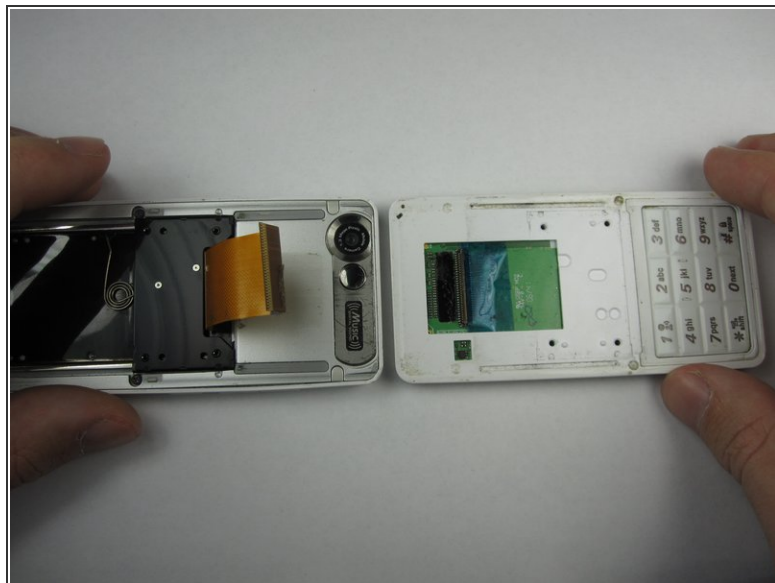
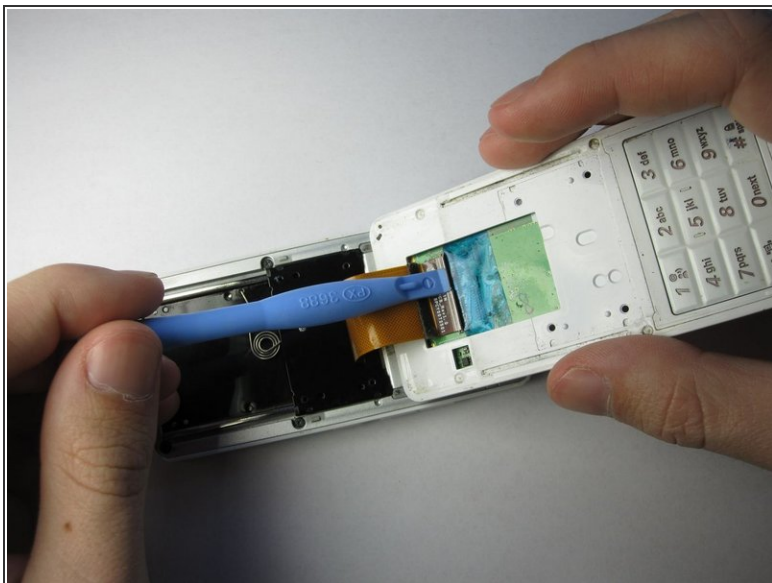
- Pry the case off using a plastic opening tool.
- Continue working the plastic opening tool around the sides of the device, unhooking the eight tabs securing the back cover to the rest of the phone as shown in the second photo.
- The back speaker will be connected to the motherboard, and must be disconnected to remove the case.

Step 4 — Sliding Front



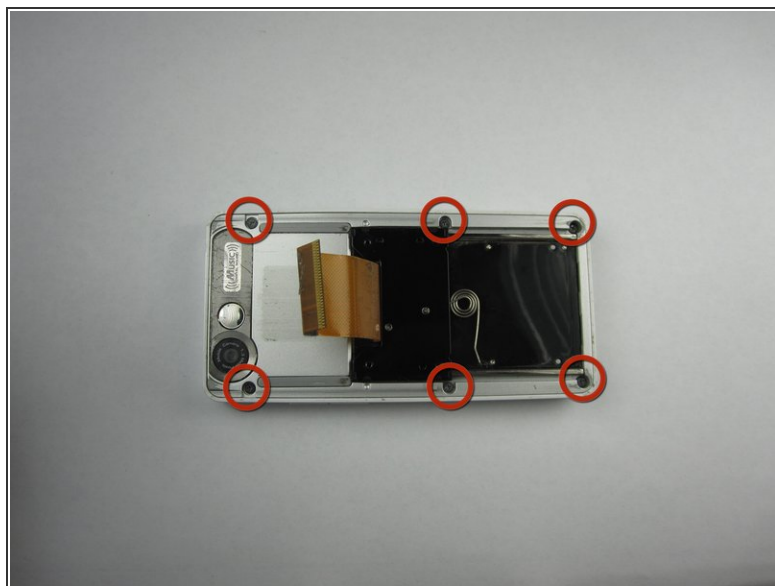
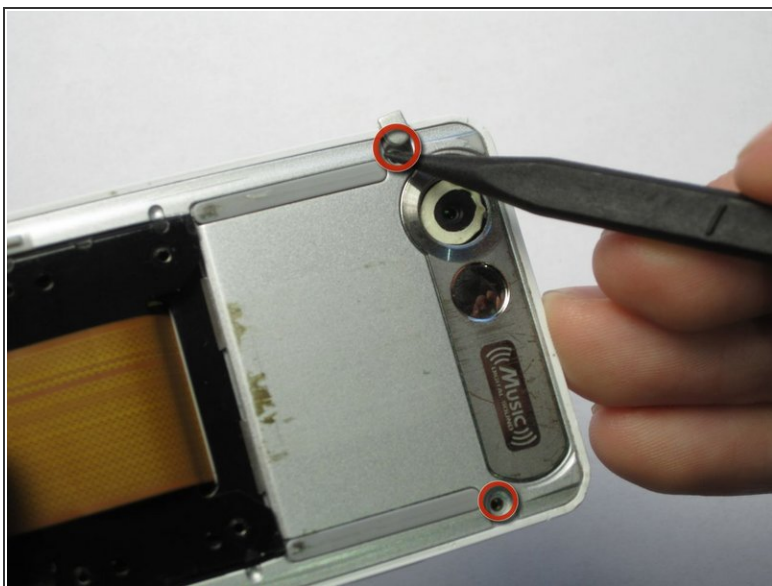
- Unscrew the 4 Phillips 00 screws that connect the two halves of the phone together.

Step 5



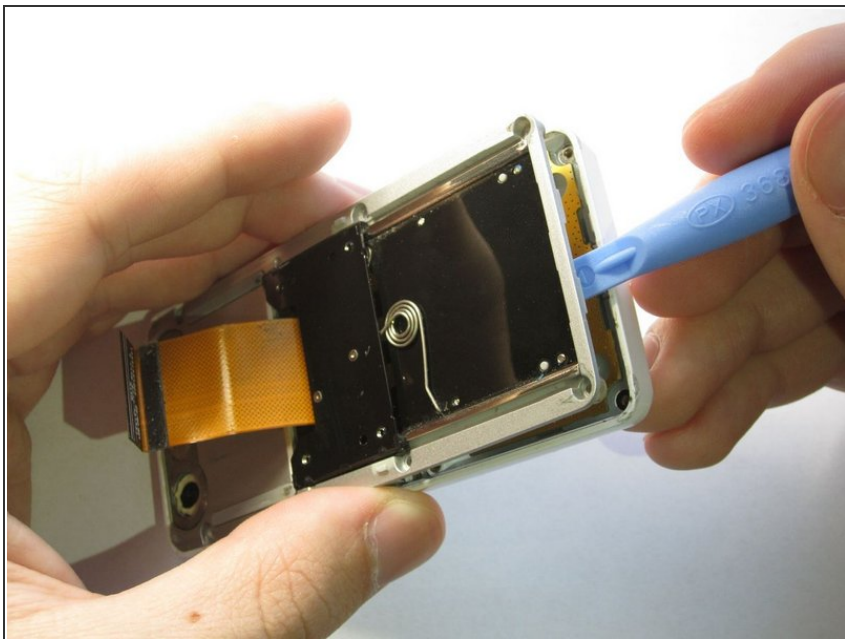
- Between the two halves is a ribbon. Use a plastic opening tool to flip up the lock and disconnect it.

Step 6



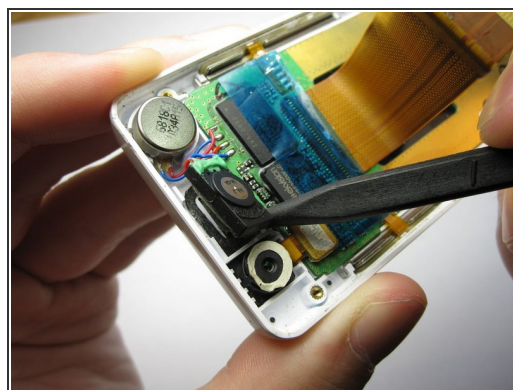
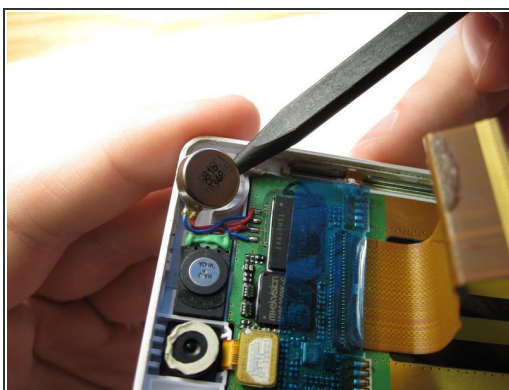
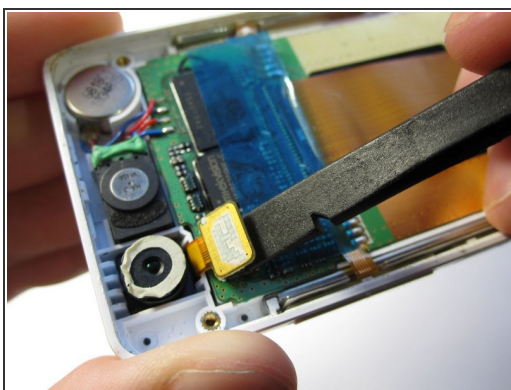
- Pry off the plastic tabs that cover two screws, as shown in the first picture.
- Then, remove the 6 Phillips 00 screws from the back of the case, as shown in the second picture.

Step 7



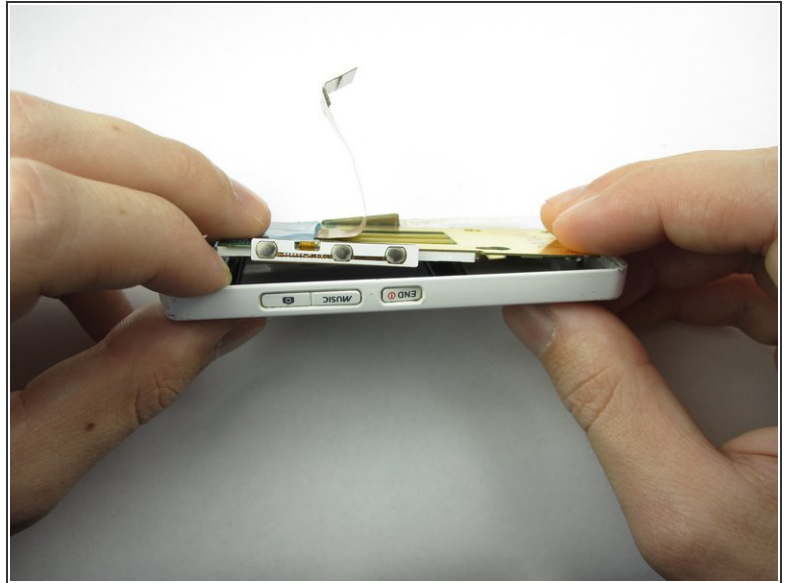
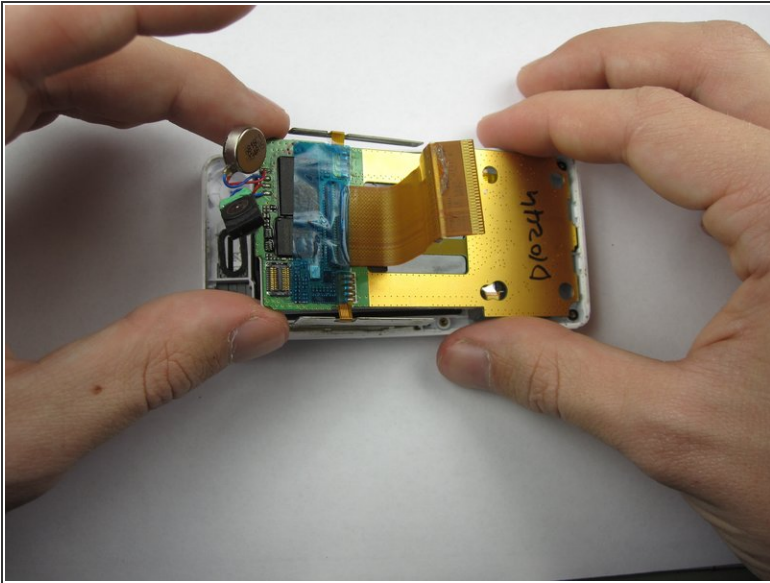
- Pry off the back cover from the front of the case using a plastic opening tool.

Step 8 — LCD Board



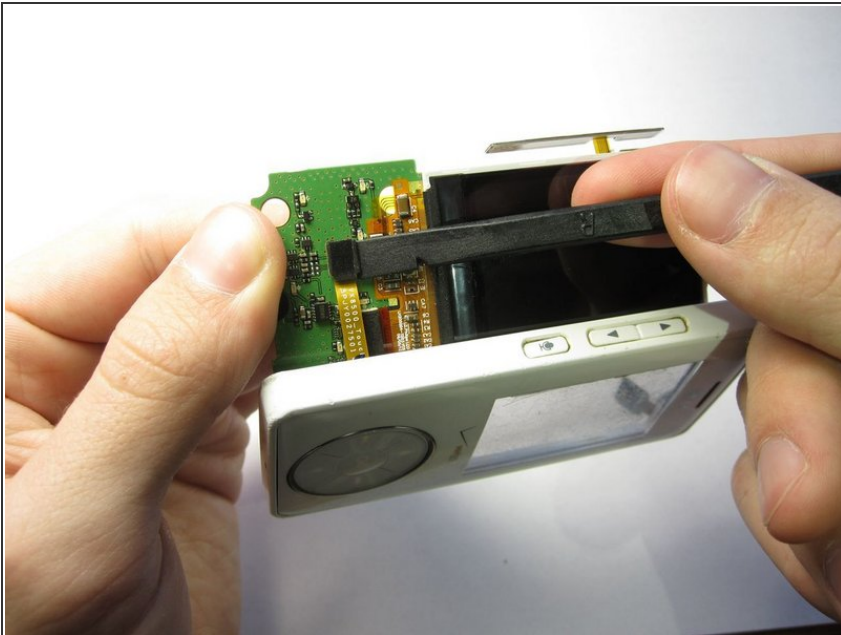
- Pry the front speaker and wireless receiver out of the front case using a spudger.
 - ⓘ They may be taped into the case, so don't be afraid to pry hard.

Step 9



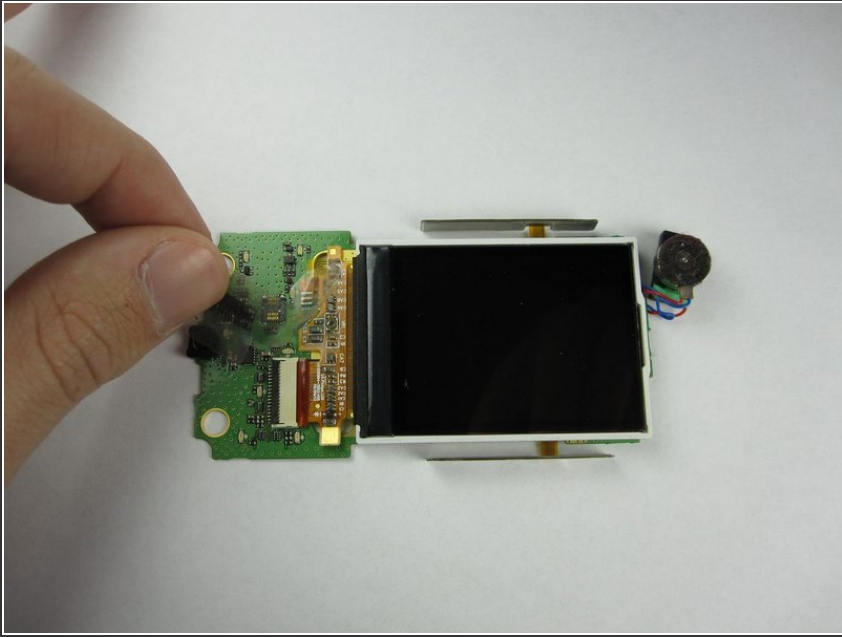
- Starting with the side that has the speaker and receiver, carefully lift the LCD Board out of the case.

Step 10



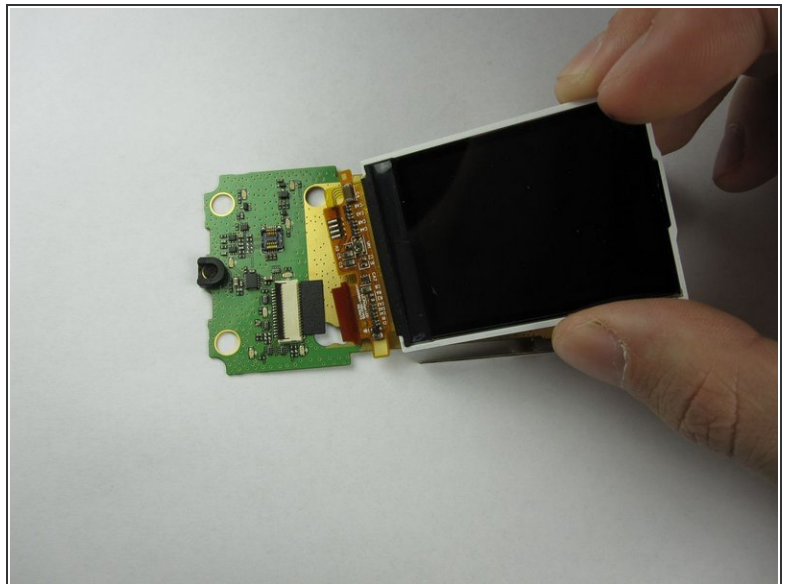
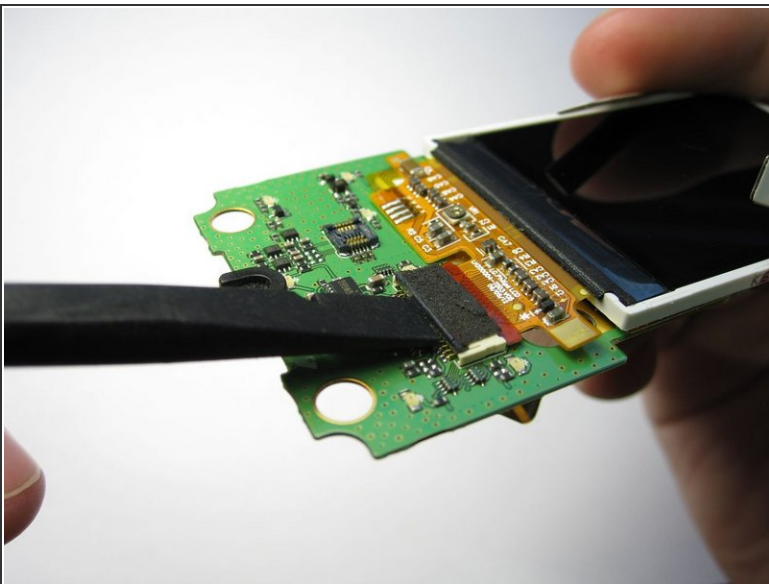
- Unhook the ribbon cable using that flat side of a spudger.

Step 11



- Next, carefully remove the tape from the LCD board.

Step 12



- Finally, flip up the black switch to unhook the LCD screen from the LCD board using a spudger.
- The LCD Board is now accessible.

To reassemble your device, follow these instructions in reverse order.