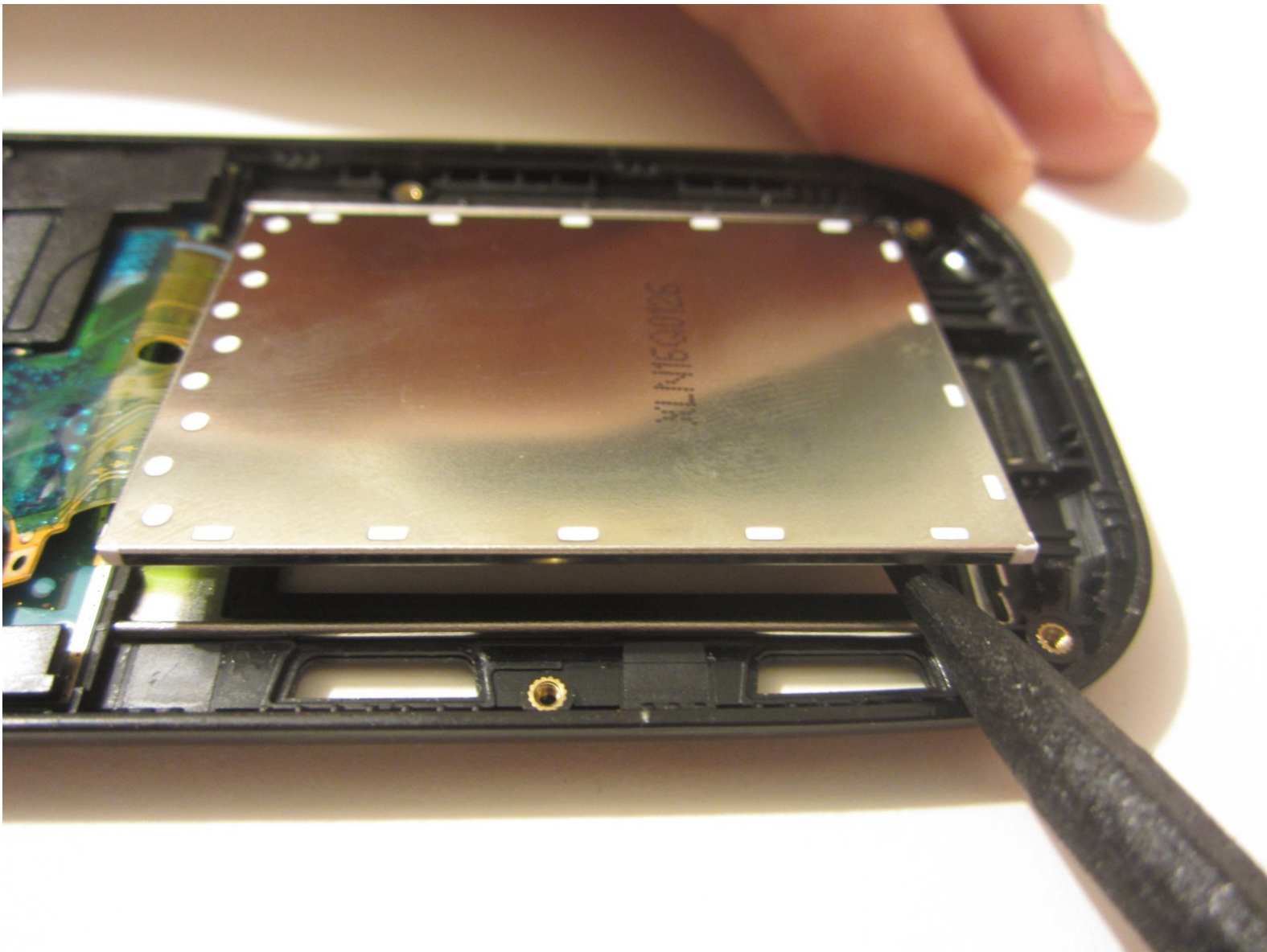




LG Cosmos 2 LCD Display Replacement

To replace a broken or malfunctioning LCD display, you will need to disassemble most of the phone, so be prepared to spend some time on the replacement.

Written By: Nick White





TOOLS:

- [iFixit Opening Tools](#) (1)
 - [Tweezers](#) (1)
 - [Spudger](#) (1)
 - [64 Bit Driver Kit](#) (1)
-

Step 1 — Battery



- Insert the plastic opener into the slot at the top of the device.
- Apply gentle pressure with the plastic tool to pop the back case off.

Step 2



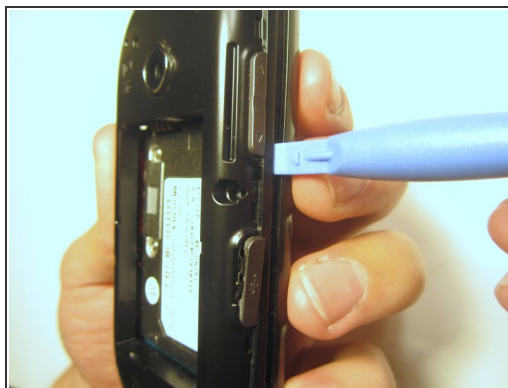
- Use the plastic opener to lift, and remove, the device battery.

Step 3 — Rear Case



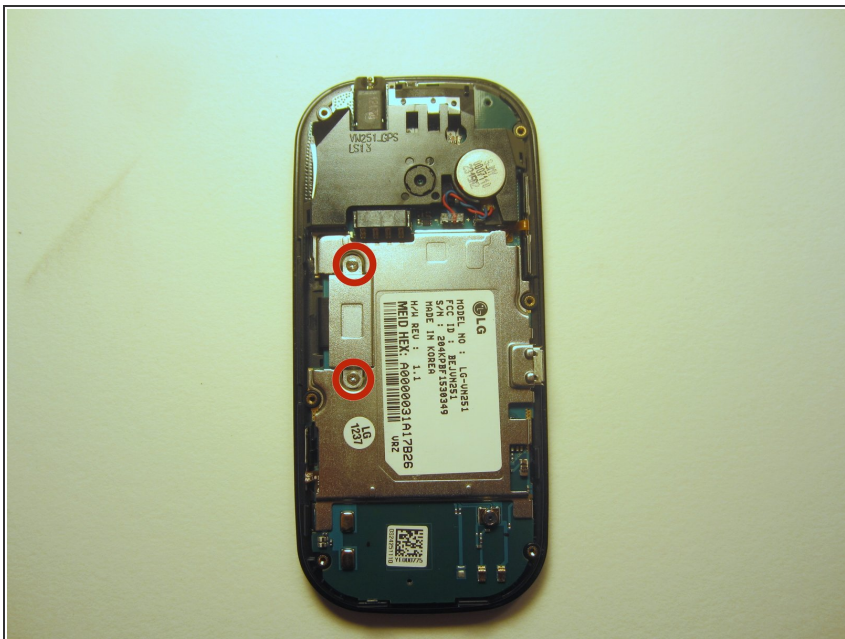
- Use a screwdriver and corresponding bit to remove the six 2mm screws that are located along the edge of the rear case. Set the screws aside.

Step 4



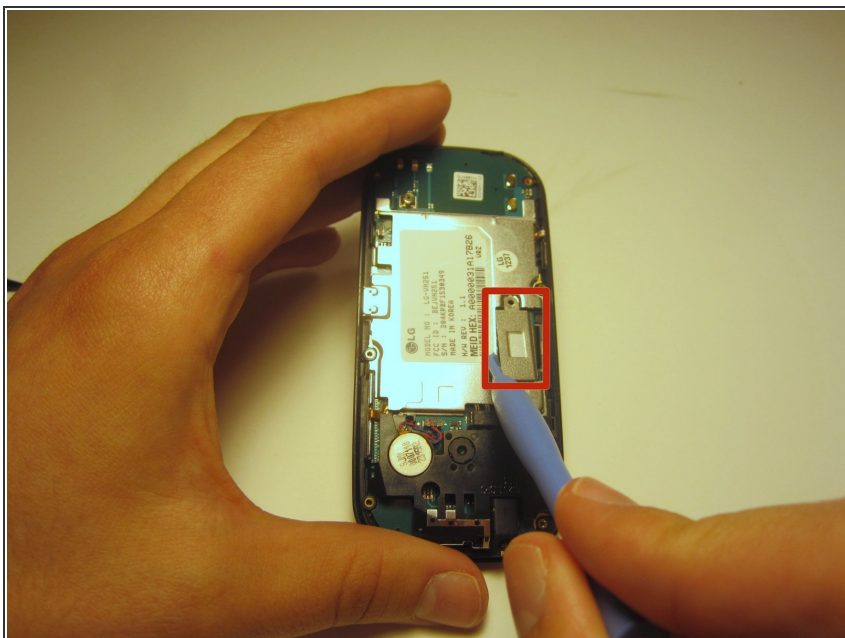
- Use the plastic opener to pry the rear case loose.
- ⓘ This can be difficult. You will need to pry around the entire edge of the rear case, not just in one place.

Step 5 — Motherboard



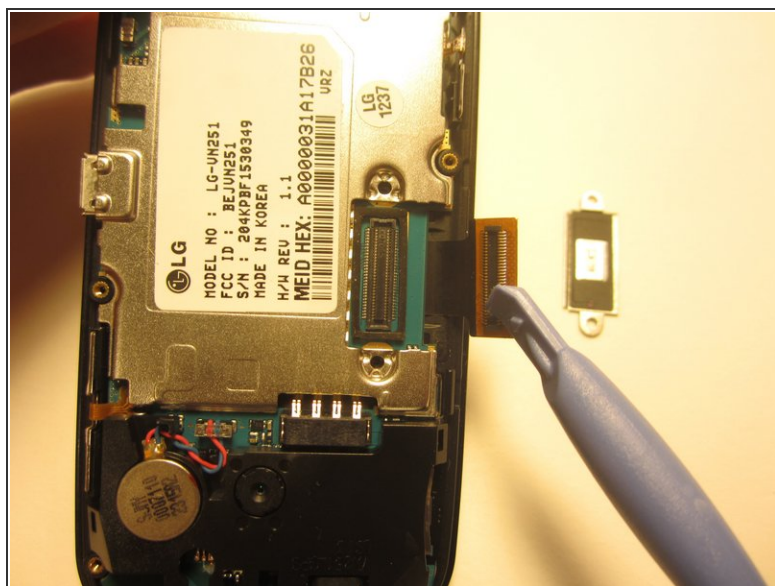
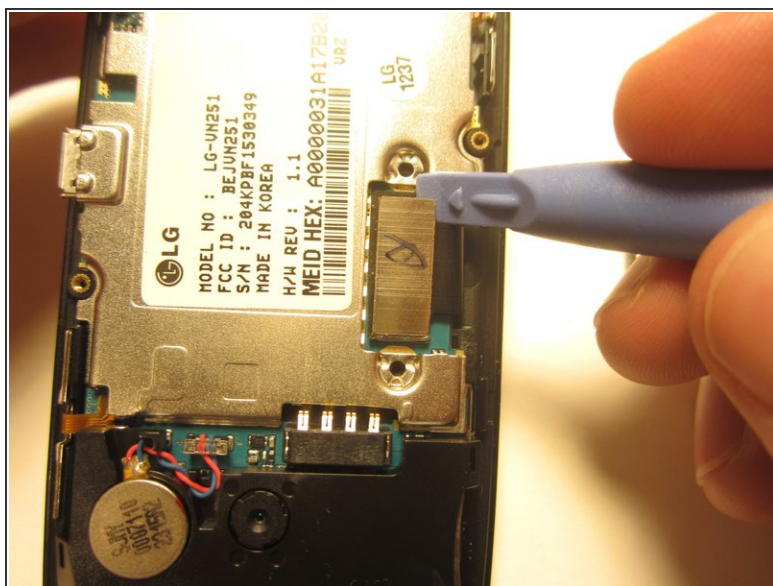
- Use a screwdriver and corresponding bit to remove the two 3mm screws that attach the motherboard to the front case. Set the screws aside

Step 6



- Rotate the phone 180 degrees and use the plastic opener to lift the metal piece that covers the ribbon cable.

Step 7



- Use the plastic opener to disconnect the ribbon cable.

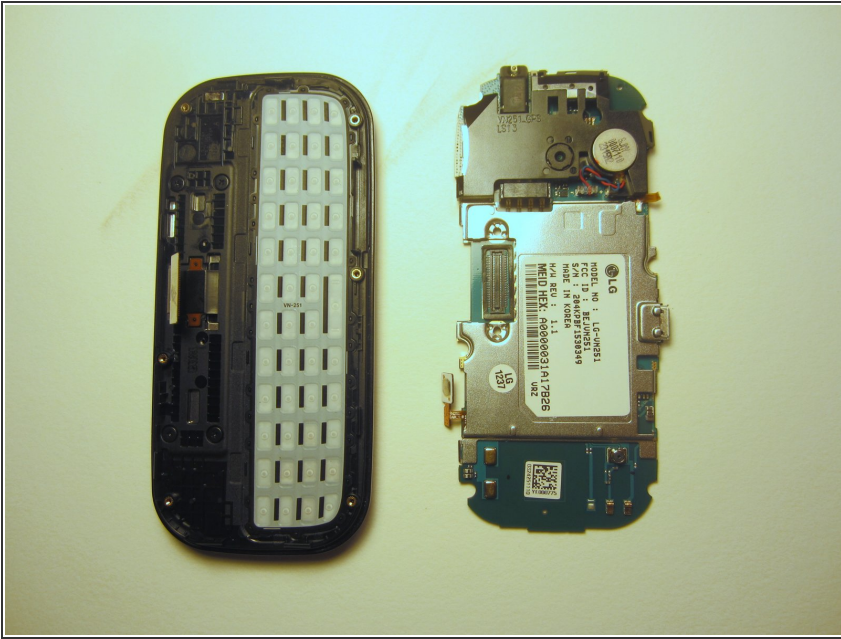
Step 8



- Use tweezers to disconnect the two cables that attach the motherboard to the case.

⚠ Note: Pull on the cables gently to prevent damage for future use.

Step 9



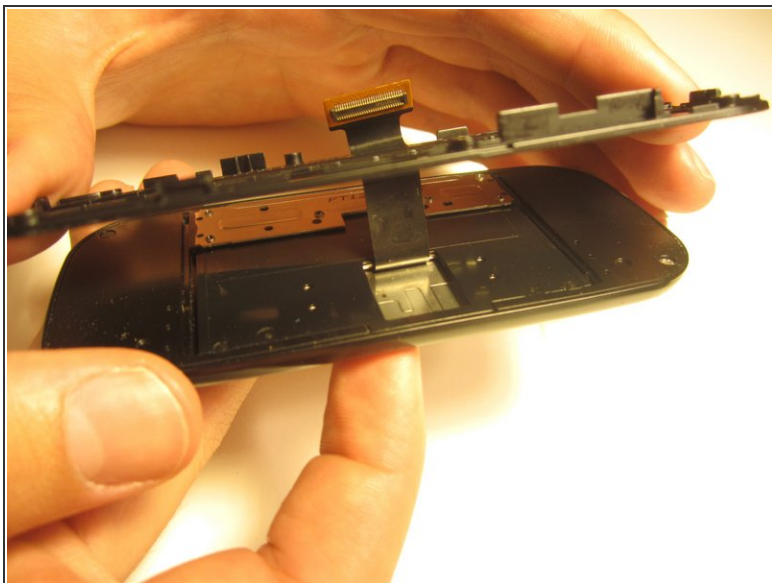
- Remove the motherboard from the front case.

Step 10 — Option Buttons



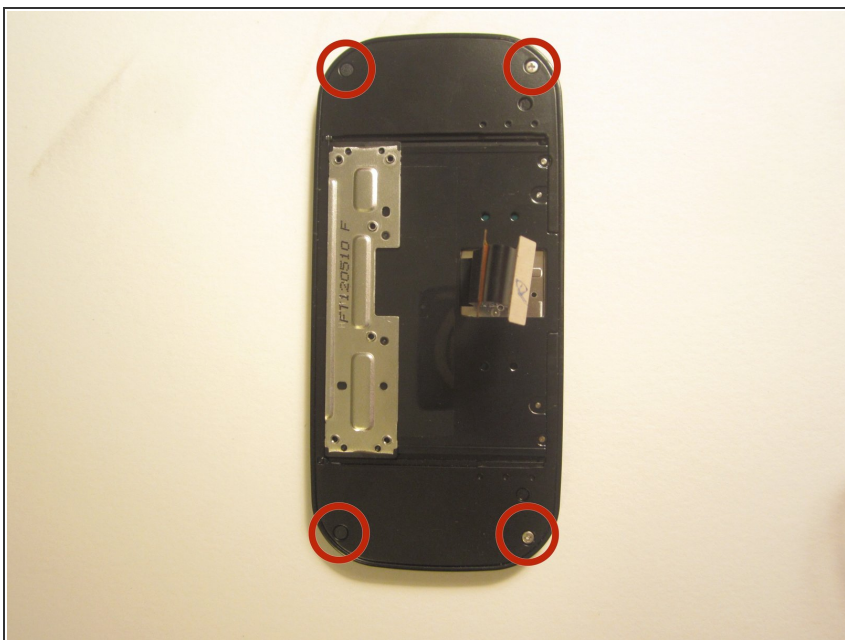
- Use a screwdriver and corresponding bit to remove the four 1mm screws. Set the screws aside.

Step 11



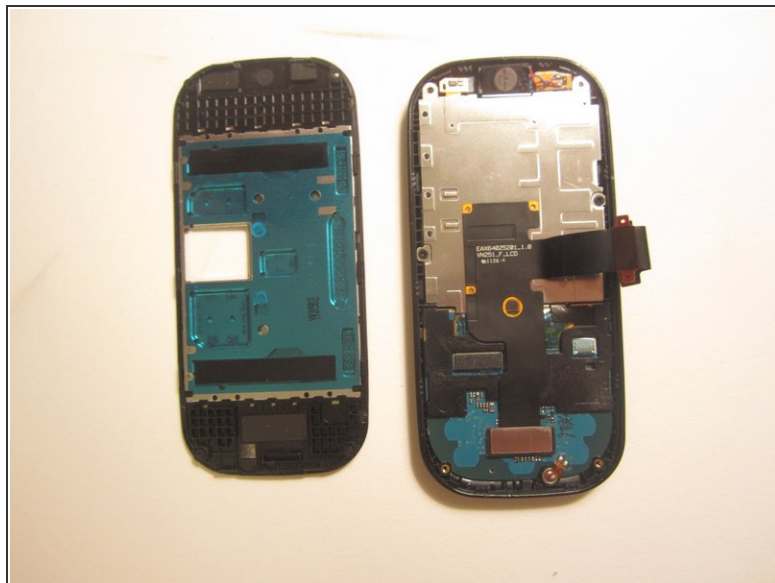
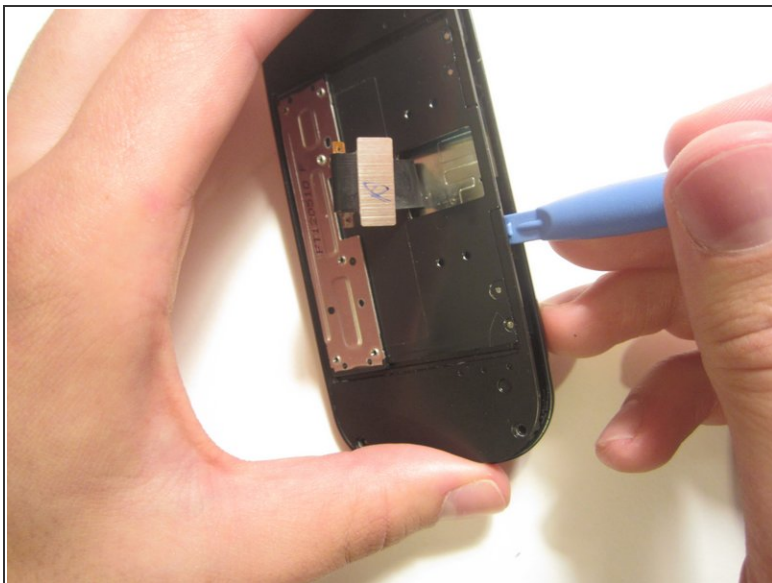
- Pull the ribbon cable through the slit in the keyboard case to separate it from the sliding mechanism.

Step 12



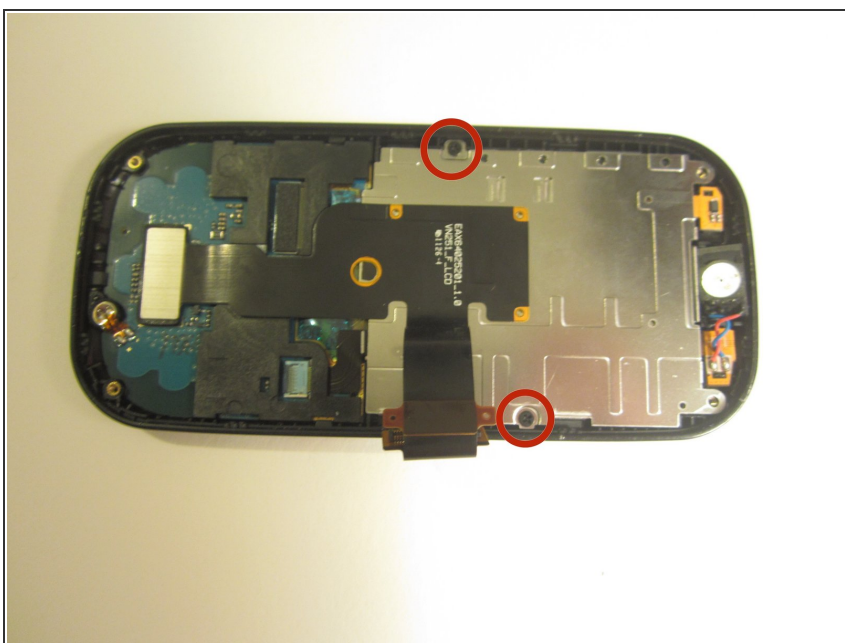
- Use a screwdriver and corresponding bit to remove the four 3mm screws. Set the screws aside.
- ⓘ Note: Two of the screws may be hidden underneath a black rubber film. Pull off this film if necessary.

Step 13



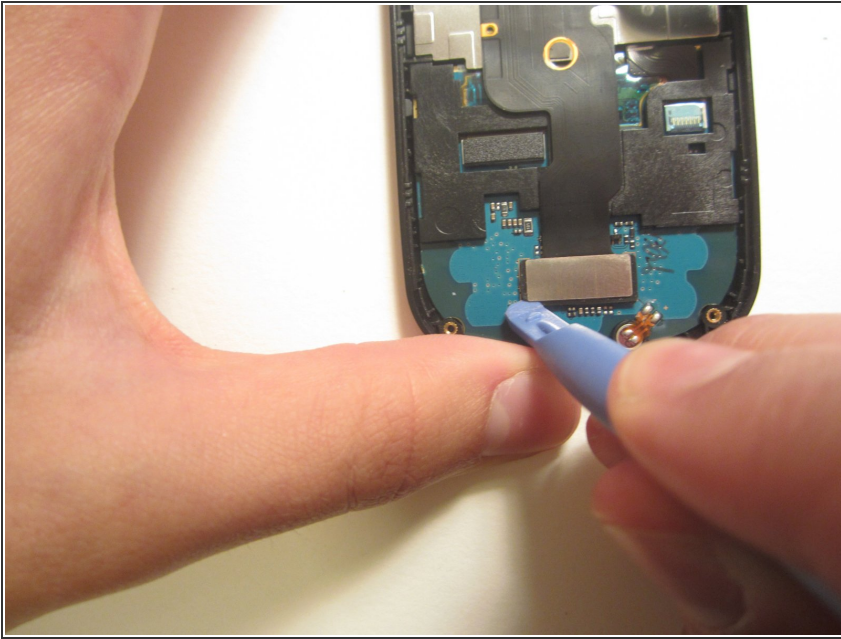
- Use the plastic opener to pry open the front of the phone.
- Slip the ribbon cable through the slit to fully separate the two pieces.

Step 14



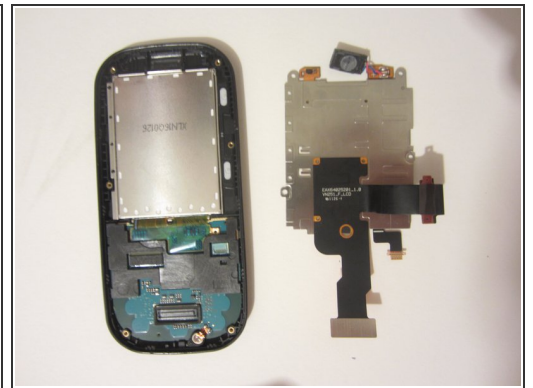
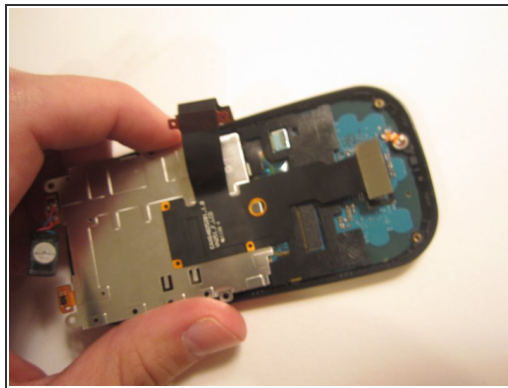
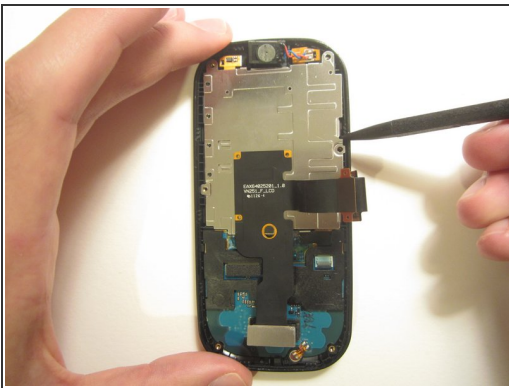
- Use a screwdriver and corresponding bit to remove the two 1mm screws. Set the screws aside.

Step 15



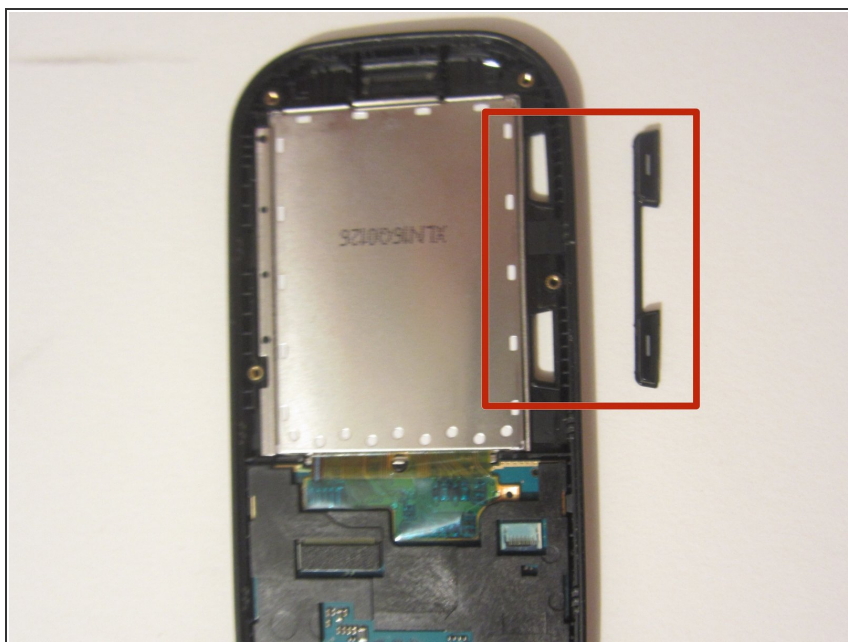
- Detach the ribbon cable with the plastic opener.

Step 16



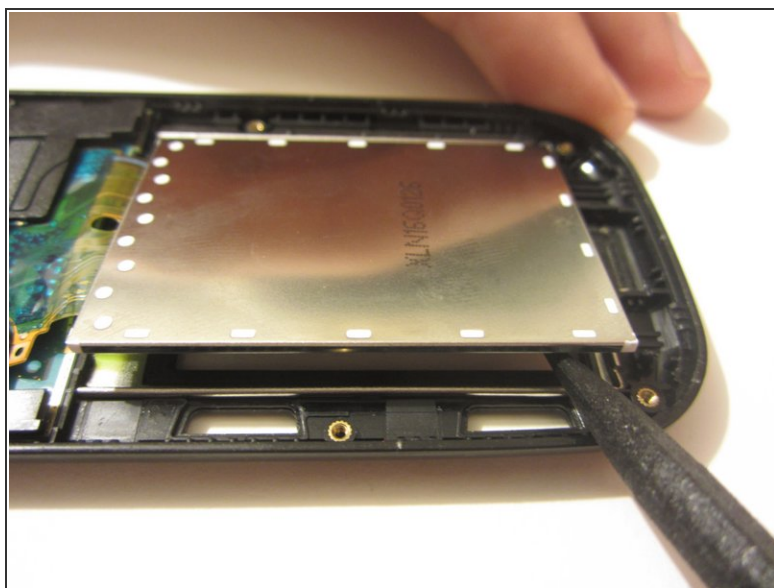
- Use the spudger to pry the metal piece loose.
- Remove the metal piece along with the two ribbon cables.

Step 17



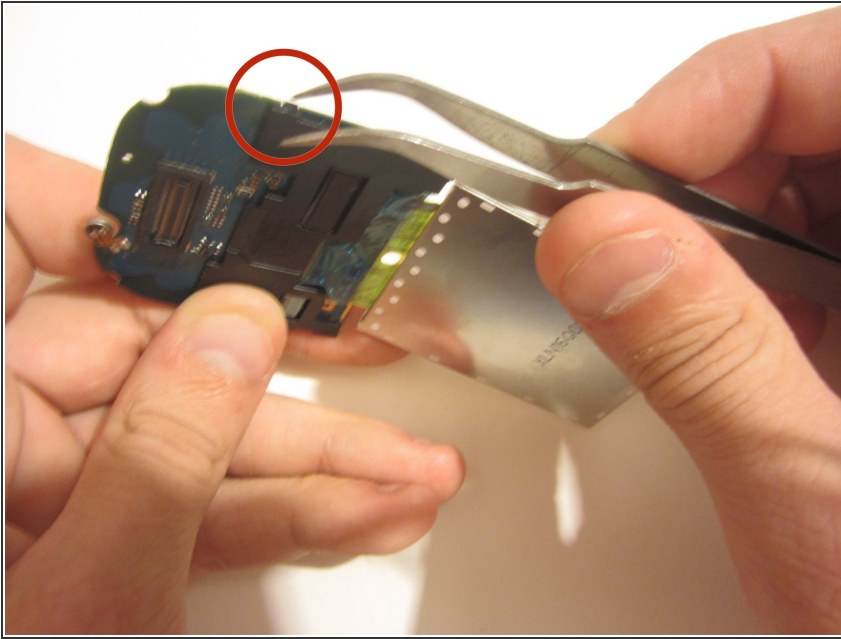
- Flip the front of the phone over and the old option buttons will fall out.
- Insert new option buttons.

Step 18 — LCD Display



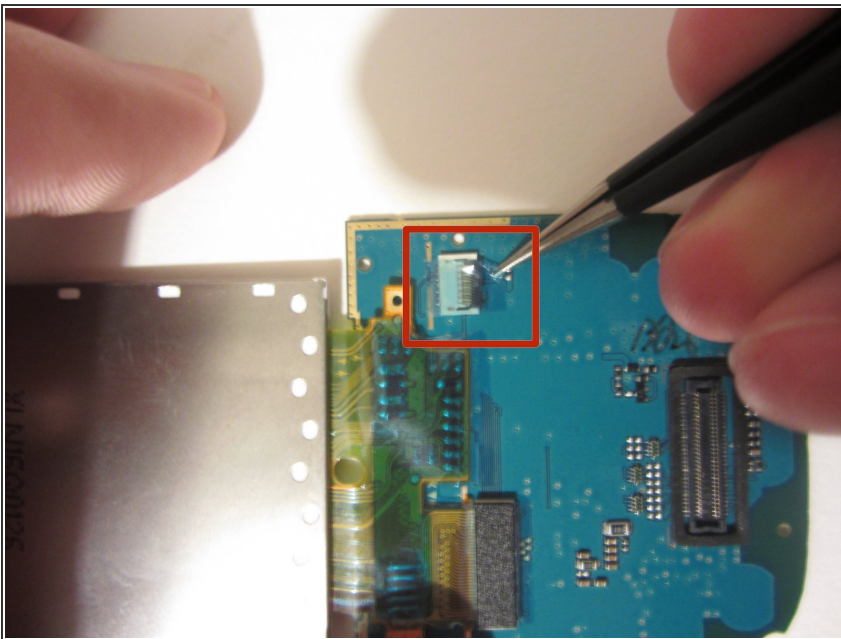
- Use a tool to pry open the LCD display. Remove the display and the circuit board that it's connected to.

Step 19



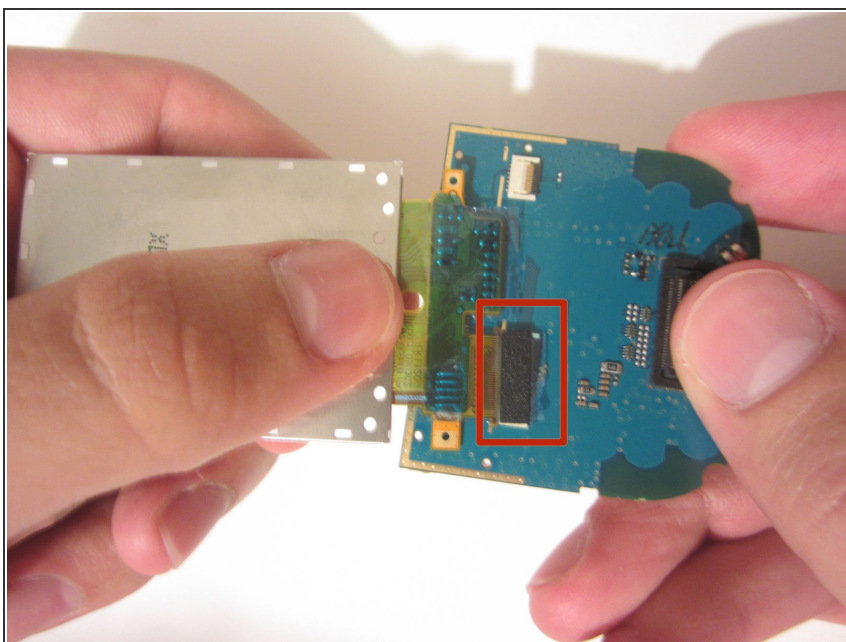
- Remove the plastic piece from the circuit board by unlocking the switch on the plastic piece with a pair of tweezers.

Step 20



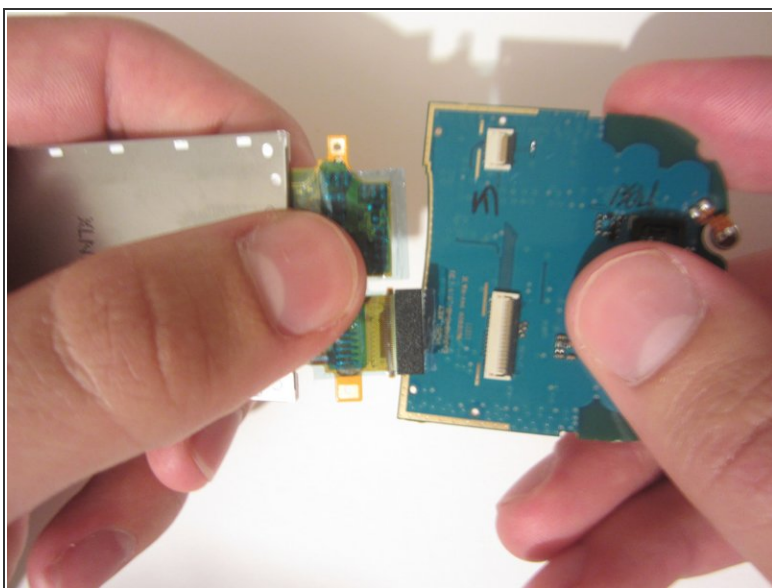
- Using a pair of tweezers, remove the tape.

Step 21



- Using either your finger or the plastic opener, disconnect the cable.

Step 22



- Pull the LCD display away from the circuit board.
 - ❗ You shouldn't feel any resistance. If you notice resistance, make sure you have completed the previous step.

To reassemble your device, follow these instructions in reverse order.