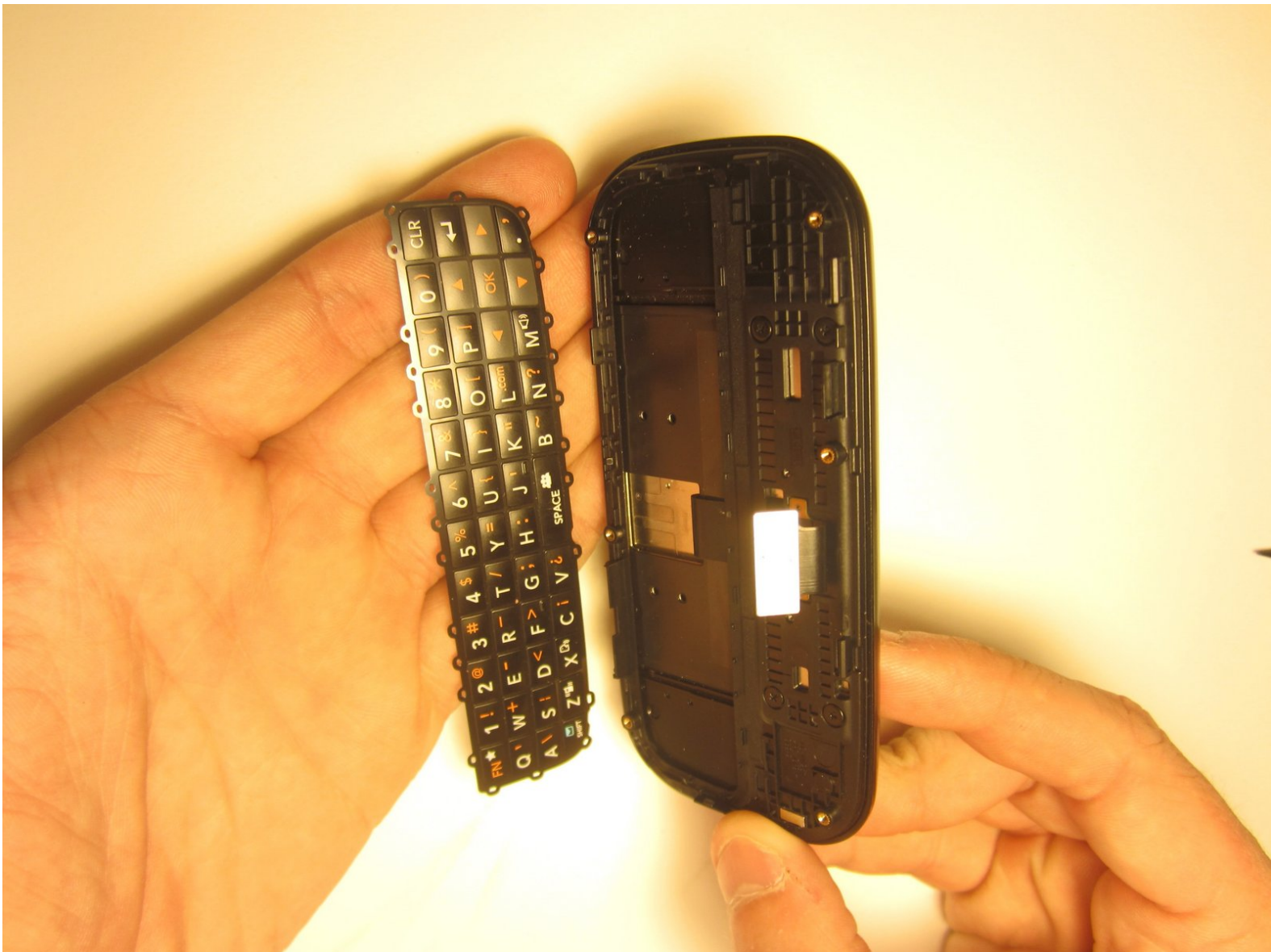




LG Cosmos 2 QWERTY Keyboard Replacement

To replace a worn or broken QWERTY keyboard, you will need to first remove the motherboard. Once the motherboard is removed, replacing the keyboard is easy.

Written By: Nick White





TOOLS:

- [iFixit Opening Tools](#) (1)
 - [Tweezers](#) (1)
 - [64 Bit Driver Kit](#) (1)
-

Step 1 — Battery



- Insert the plastic opener into the slot at the top of the device.
- Apply gentle pressure with the plastic tool to pop the back case off.

Step 2



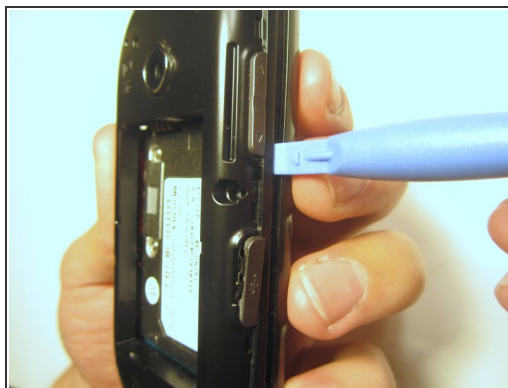
- Use the plastic opener to lift, and remove, the device battery.

Step 3 — Rear Case



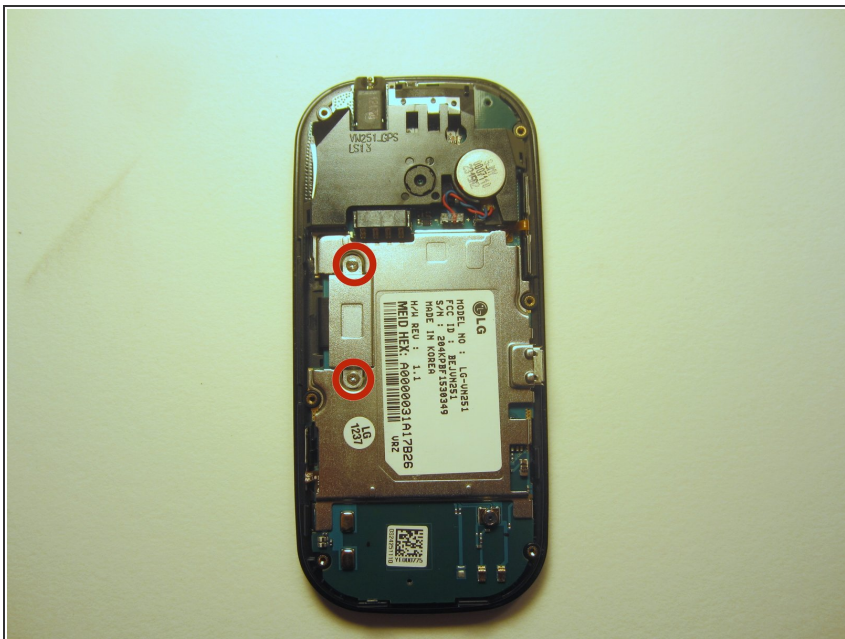
- Use a screwdriver and corresponding bit to remove the six 2mm screws that are located along the edge of the rear case. Set the screws aside.

Step 4



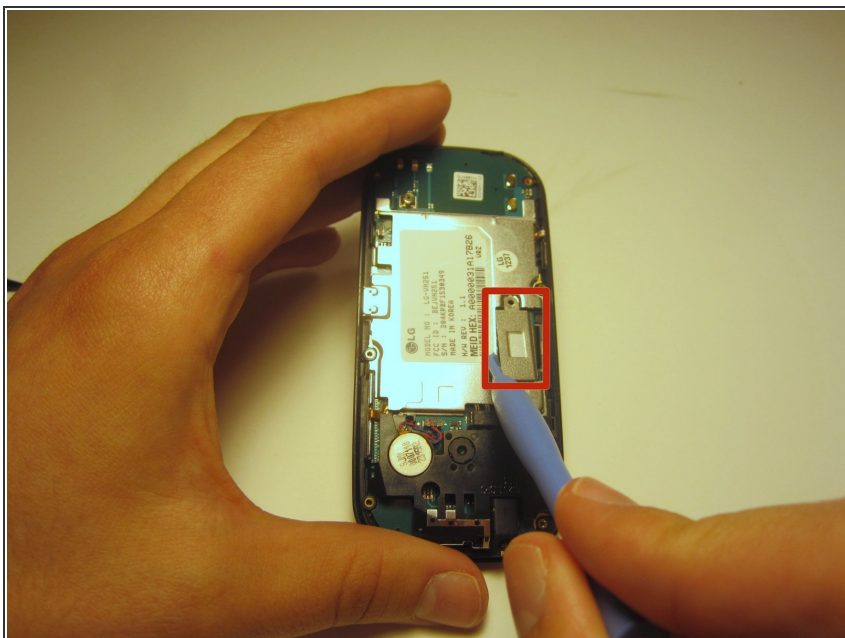
- Use the plastic opener to pry the rear case loose.
- i** This can be difficult. You will need to pry around the entire edge of the rear case, not just in one place.

Step 5 — Motherboard



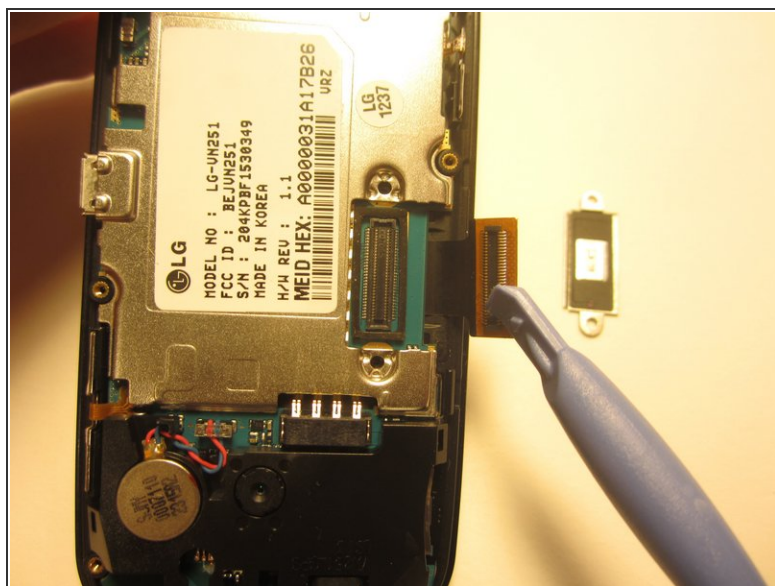
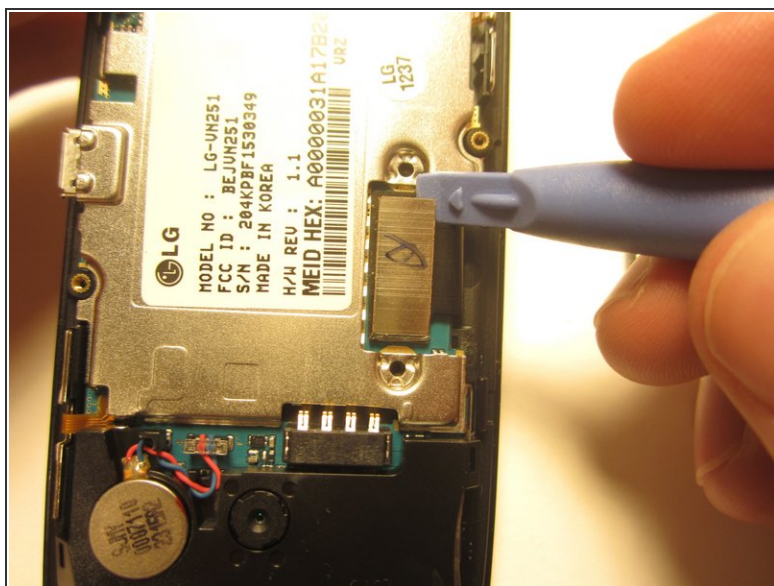
- Use a screwdriver and corresponding bit to remove the two 3mm screws that attach the motherboard to the front case. Set the screws aside

Step 6



- Rotate the phone 180 degrees and use the plastic opener to lift the metal piece that covers the ribbon cable.

Step 7



- Use the plastic opener to disconnect the ribbon cable.

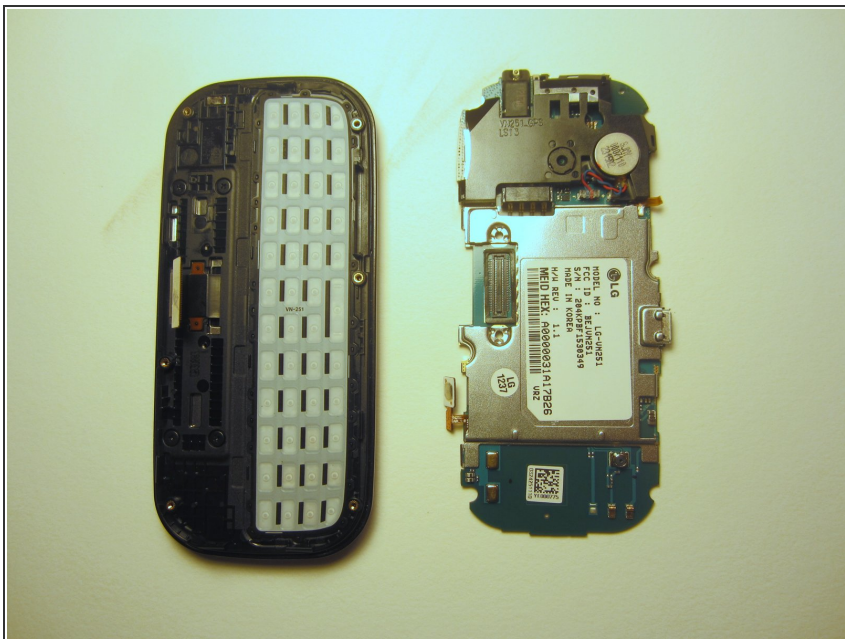
Step 8



- Use tweezers to disconnect the two cables that attach the motherboard to the case.

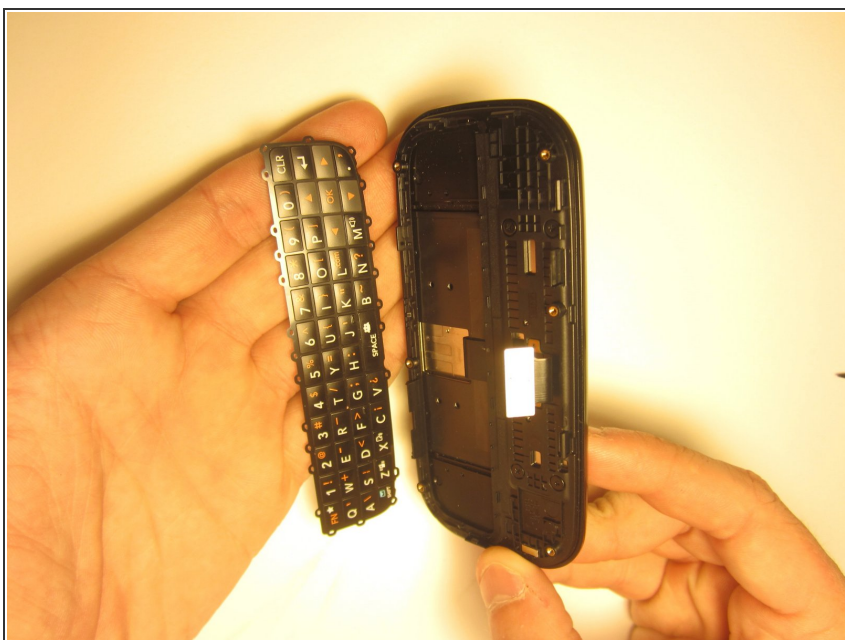
⚠ Note: Pull on the cables gently to prevent damage for future use.

Step 9



- Remove the motherboard from the front case.

Step 10 — QWERTY Keyboard



- Flip the front case over. If the keyboard doesn't fall out, push it through the front case.

To reassemble your device, follow these instructions in reverse order.