



# LG EnV Touch VX11000 Keyboard Replacement

This guide demonstrates how to replace the keyboard on an LG EnV Touch.

Written By: Rachel Smith



---

## INTRODUCTION

If the keyboard on your LG EnV Touch VX11000 is unresponsive or malfunctioning, you may need to replace it. This guide will show you how to replace the keyboard on an LG EnV Touch VX11000.

---

### TOOLS:

- [Phillips #000 Screwdriver](#) (1)
-

## Step 1 — Battery



- Turn the phone off.
- Flip it over so the front screen is facing down.

## Step 2



- Slide the release latch down and toward you while lifting up on the left side of the battery cover.

### Step 3



- Lift the edge of the battery to remove it.

### Step 4 — Volume and Camera Buttons



- Locate the three screw covers on the back of the phone. Using your fingernail (or a spudger, pry off screw covers.
- Using a Phillips #000 Screwdriver, remove the 1.5mm #000 Phillips screws that were under the screw covers.

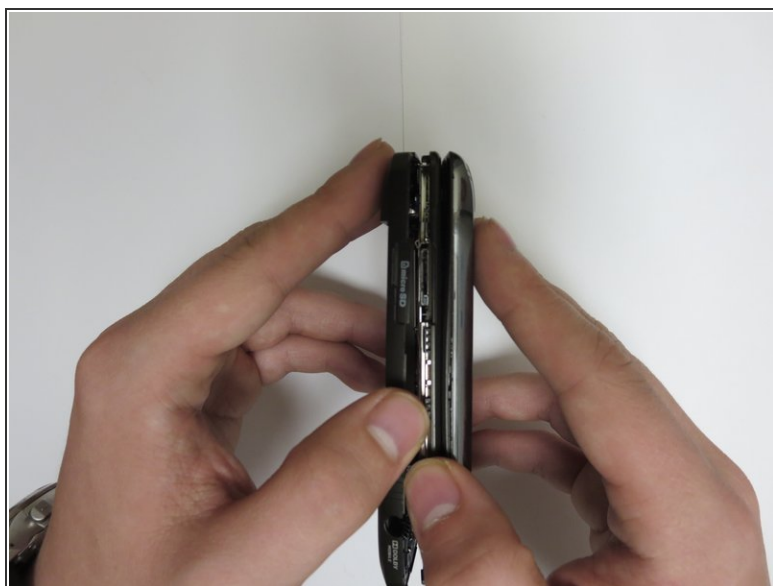


## Step 5



- Locate the two inner 1.5mm #000 Phillips screws and remove them using a Phillips #000 screwdriver.

## Step 6



- Use a plastic opening tool or your fingernail to pry off the back case.

 The camera and volume keys will fall off.

## Step 7 — Keyboard



- Use your hands to open the phone, separating the keyboard frame from the screen.
- Using your thumbs, gently separate the motherboard from the frame, and the keyboard will fall out.

To reassemble your device, follow these instructions in reverse order.