



LG EnV Touch VX11000 Screen Assembly Replacement

This guide demonstrates how to replace the screen assembly on an LG EnV Touch.

Written By: Rachel Smith



INTRODUCTION

If the screen on your LG EnV Touch VX11000 is cracked, scratched, or not displaying properly, you may need to replace it. This guide will show you how to replace the screen assembly on an LG EnV Touch VX11000.

TOOLS:

- [Phillips #000 Screwdriver](#) (1)
 - [1.5 mm Flathead Screwdriver](#) (1)
-

Step 1 — Battery



- Turn the phone off.
- Flip it over so the front screen is facing down.

Step 2



- Slide the release latch down and toward you while lifting up on the left side of the battery cover.

Step 3



- Lift the edge of the battery to remove it.

Step 4 — Volume and Camera Buttons



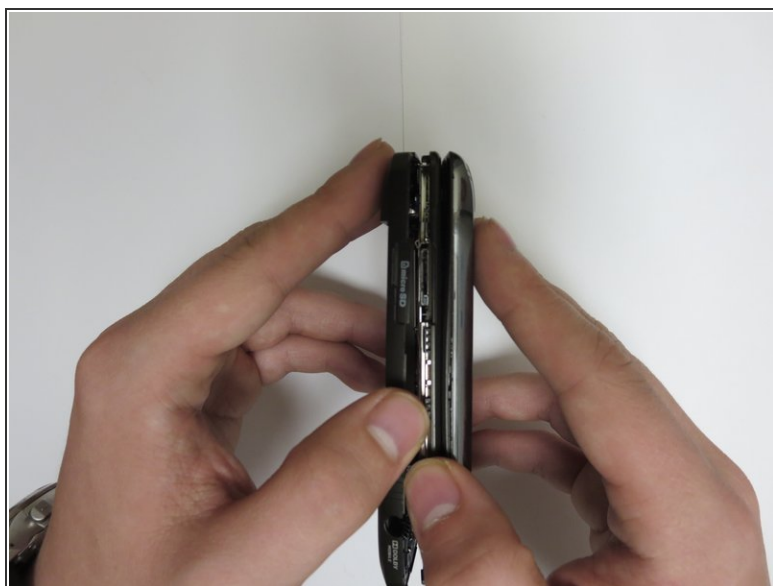
- Locate the three screw covers on the back of the phone. Using your fingernail (or a spudger, pry off screw covers.
- Using a Phillips #000 Screwdriver, remove the 1.5mm #000 Phillips screws that were under the screw covers.

Step 5



- Locate the two inner 1.5mm #000 Phillips screws and remove them using a Phillips #000 screwdriver.

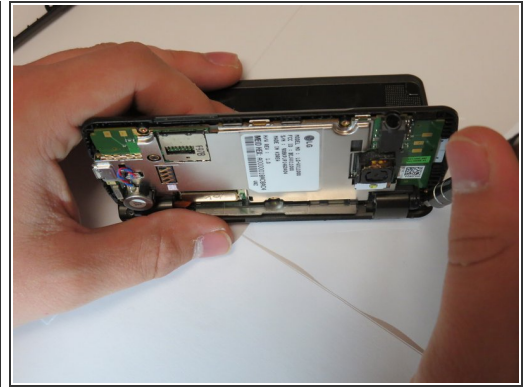
Step 6



- Use a plastic opening tool or your fingernail to pry off the back case.

 The camera and volume keys will fall off.

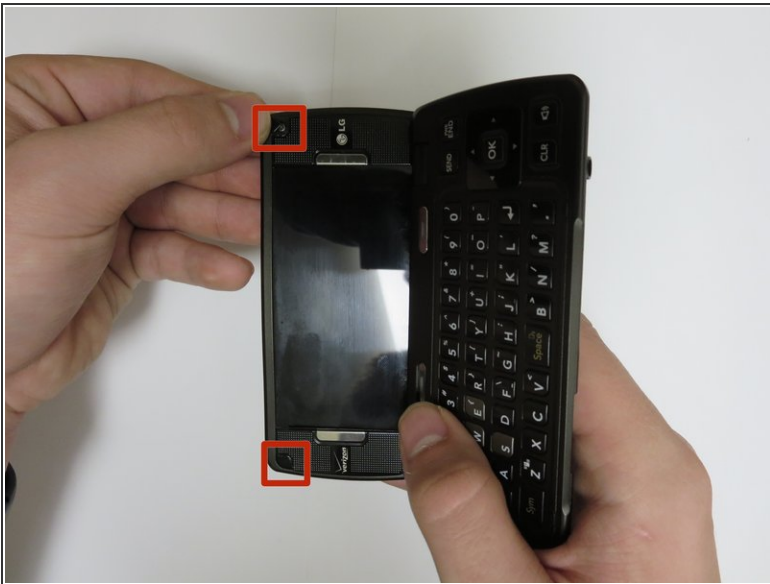
Step 7 — Screen Assembly



i Open the phone at a 90 degree angle. This needs to be done in order to reach the screws.

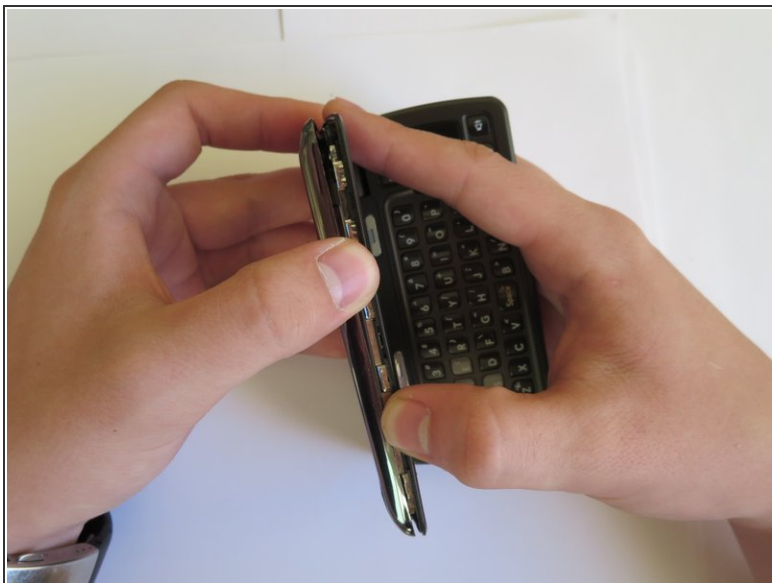
- Locate the two 1.5mm #000 Phillips screws on the outside of each hinge.
- Remove the two 1.5mm #000 Phillips screws with a Phillips #000 screwdriver.

Step 8



- Pry off the two screw covers on the inside screen, using a spudger or your fingernail.
- Remove the two 1.5mm #000 Phillips screws that were under the screw covers using the Phillips #000 screwdriver.

Step 9



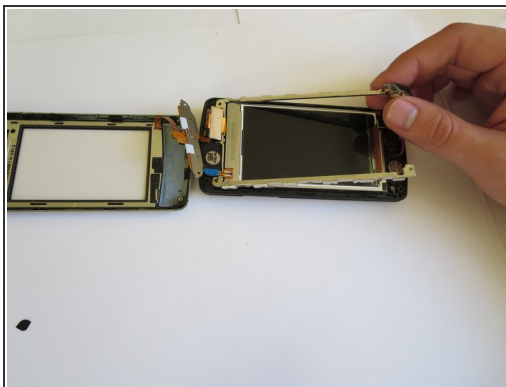
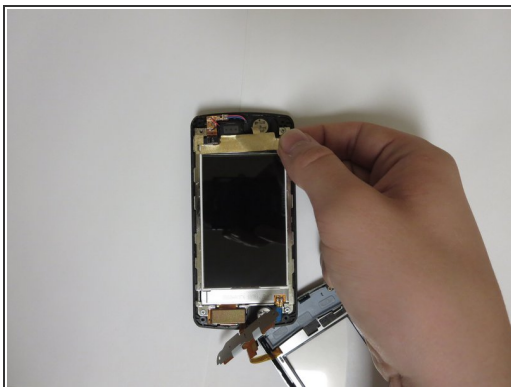
- Pry off the front frame using your fingernail.
- ⓘ The frame should still be connected to the rest of the phone by the orange tab.

Step 10



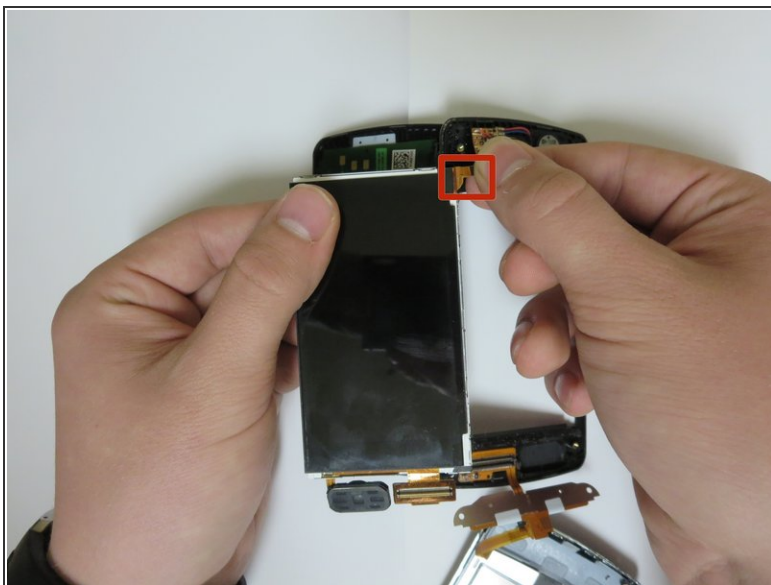
- Remove the four 1.5mm #000 Phillips screws at each of the corners of the phone, using the Phillips #000 screwdriver.

Step 11



- Peel off the gold tape.
- Gently pry up the metal frame with your fingers so that the screen can be removed.

Step 12



- Unplug the connector from the screen.

To reassemble your device, follow these instructions in reverse order.