



LG EnV VX9900 LCD Screen Replacement

This guide is for installing the LCD Screen for the LG EnV VX9900.

Written By: Stephanie Villavicencio



INTRODUCTION

For an easier time working with the LCD Screen, follow the Installation Guide for the Circuit Board and Full Key Board.



TOOLS:

- [Phillips #00 Screwdriver](#) (1)
 - [Push Pin](#) (1)
 - [iFixit Opening Tools](#) (1)
-

Step 1 — Battery



- Place the phone so the screen side is facing down.
- Locate the latch at the end of the phone, opposite of the camera.

Step 2



- Push/pull the latch away from the camera, causing the battery to pop out.

Step 3



- Remove the battery.

Step 4 — Circuit Board and Full Key Board



- Remove the 5 screw covers on the back of the phone using a Push Pin.

Step 5



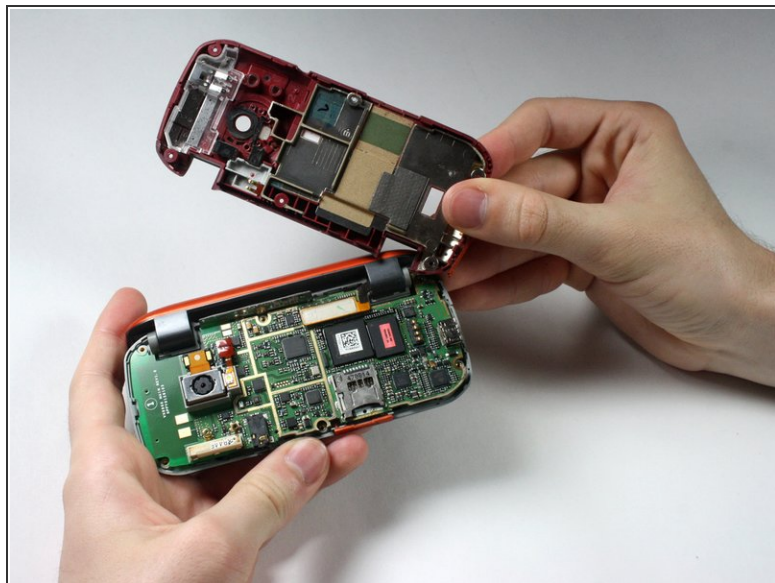
- With a Phillips #00 Screwdriver, remove the five 3.44 mm screws that were under the screw covers.
- Also with a Phillips #00 Screwdriver, remove the screw that was revealed once the battery was removed.

Step 6



- Open the phone.

Step 7



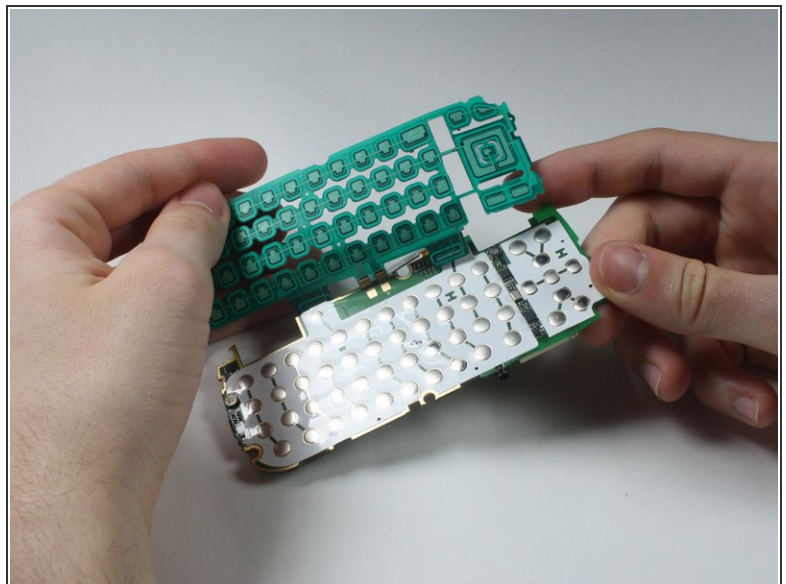
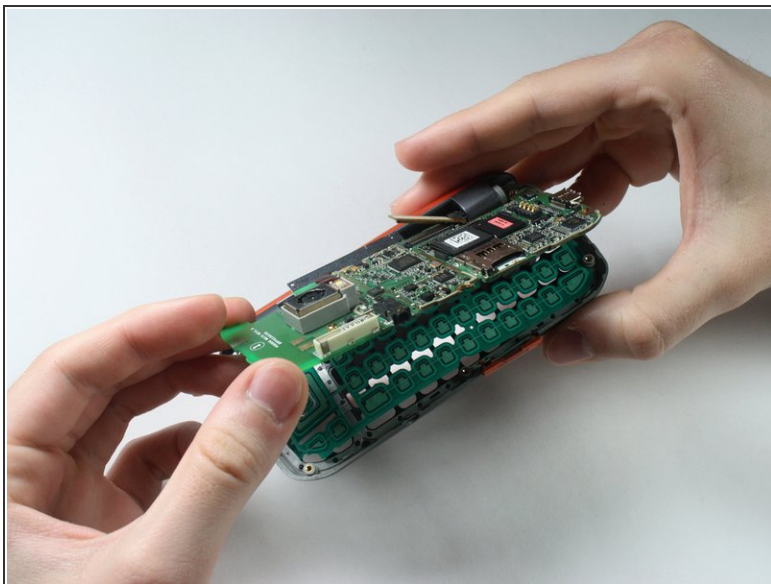
- Starting at the card slot or charger port for greater ease, pry off the colored casing from the back of the phone using the Plastic Pry Tool (or a finger nail may work).
- ⓘ Prying open the part just to the left of the right hinge can be difficult.
- Remove the back colored casing and set it to the side.

Step 8



- Gently pry and detach the connection located near the hinge with fingers.

Step 9



i The circuit board and the key board will be attached, as shown in the second picture.

- Lift them both out from the rest of the phone.

! Do not try to the detach key board pad from the circuit board. They are replaced as a unit.

Step 10 — LCD Screen



- After removing the circuit board and key board, separate the top part with the screen from the bottom part by detaching the hinges.

Step 11



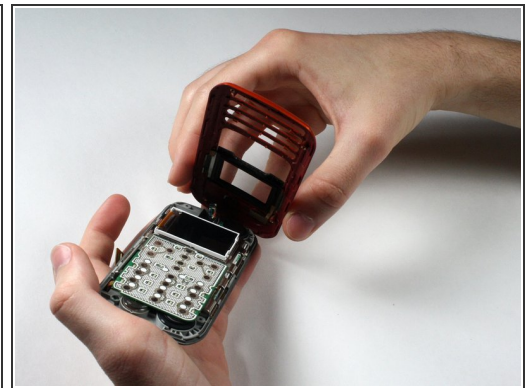
- ⚠ Careful! The paint is easy to scratch.
- Remove the 4 screw covers from top piece of phone by using a Push Pin.


Step 12



- Remove the four 3.44 mm screws that were under the covers using a Phillips #00 Screwdriver.

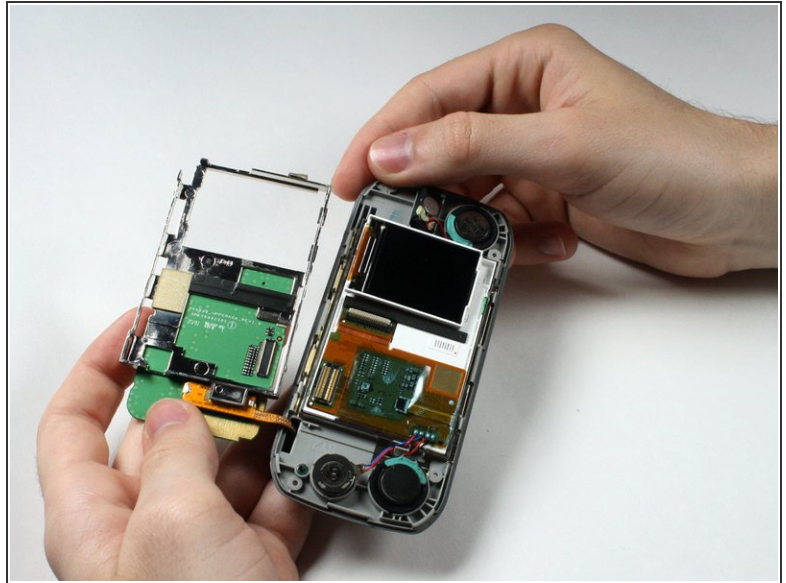
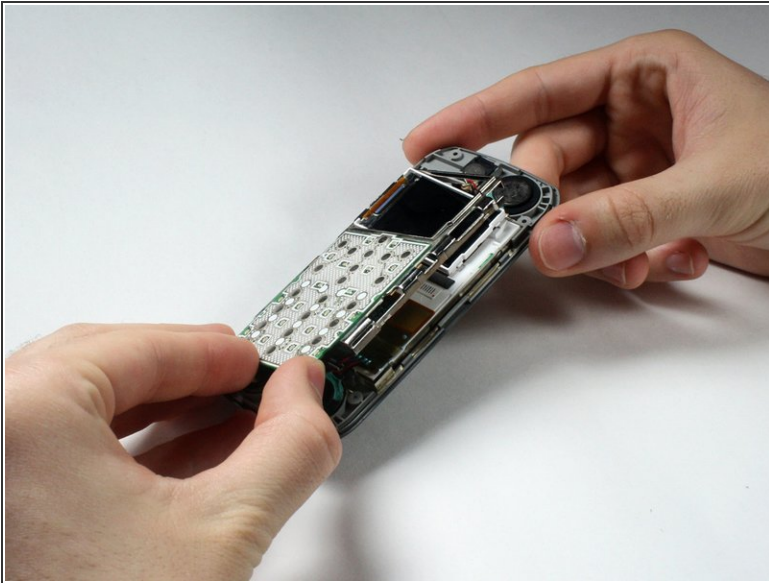
Step 13



 Be careful while breaking the adhesive connecting the speaker and the casing in the following sub step so that you do not tear any wires.

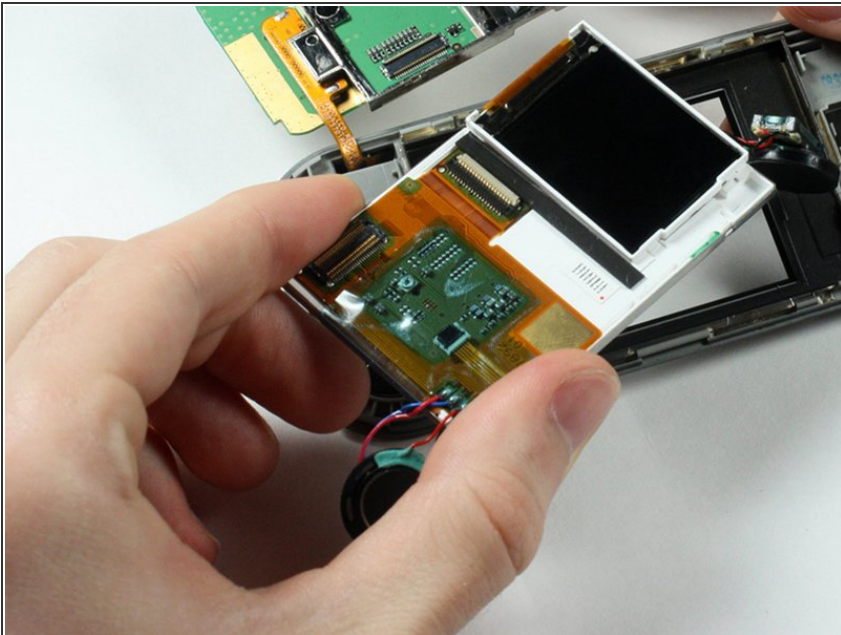
- Pry open the colored casing using the Plastic Pry Tool.
- Remove the number pad and place it to the side.

Step 14



- Because the Number Keypad is attached on one side and on top of the outer screen, open its metal casing, in a "door-opening" manner.

Step 15



- ① The pieces connected by wires are magnets and are removable.
- Remove the LCD Screen.

To reassemble your device, follow these instructions in reverse order.

This document was generated on 2020-01-19 10:57:23 AM (MST).

