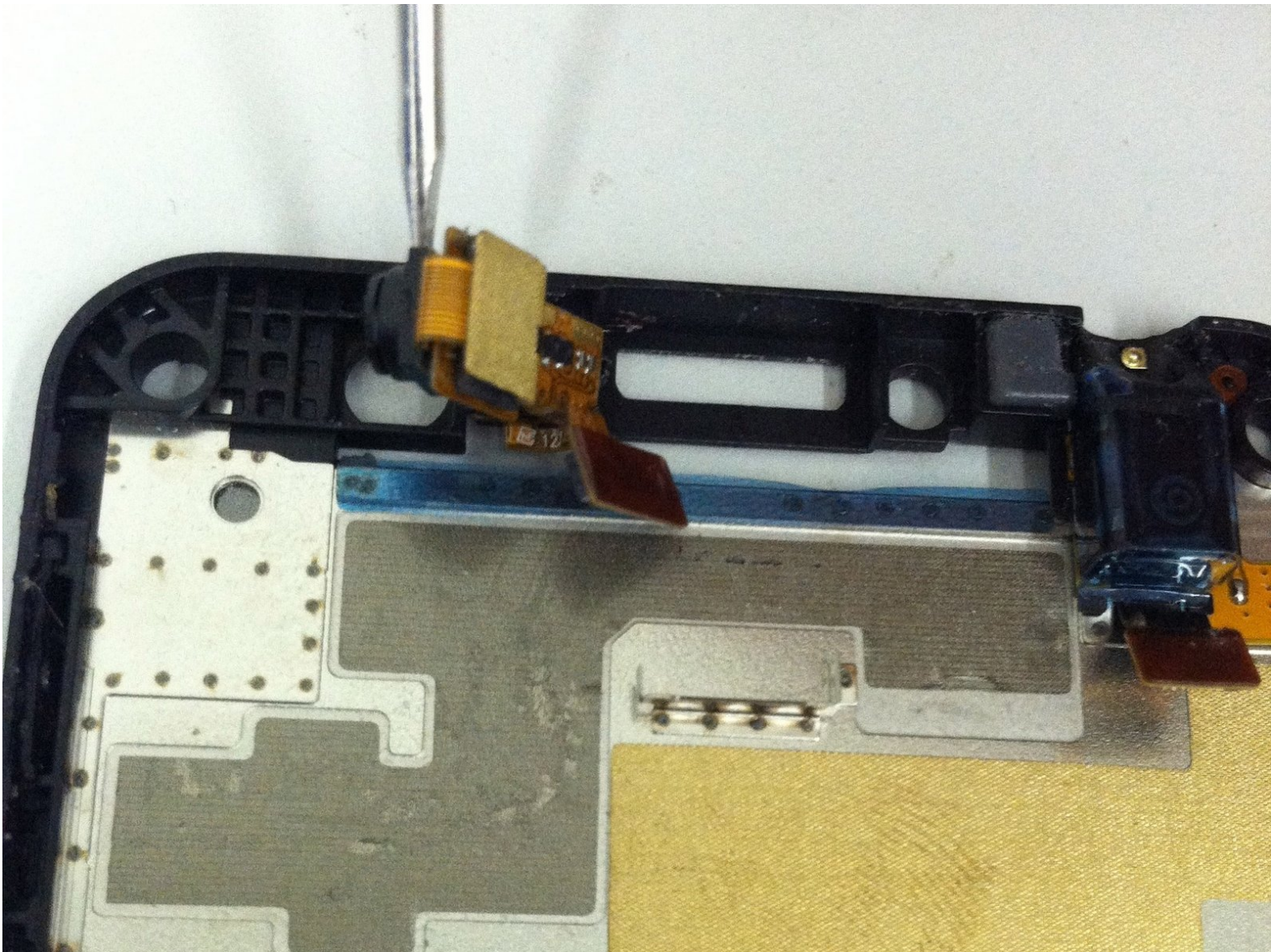




LG Escape (p870) Front Camera Replacement

This guide will show you how to replace the front camera on your LG Escape (p870).

Written By: Brad



INTRODUCTION

This guide will show you how to replace the front camera on your LG Escape (p870).



TOOLS:

- [Phillips #00 Screwdriver](#) (1)
 - [Flathead 3/32" or 2.5 mm Screwdriver](#) (1)
 - [Spudger](#) (1)
 - [Tweezers](#) (1)
-

Step 1 — Battery



- Turn the device over and pull the back plastic cover off by inserting your fingernail into the opening at the bottom of the phone and gently pulling.

Step 2



- With your finger and from the bottom edge, lift the battery out of the phone and set it aside.
- You now have access to:
 - Your SD card
 - Your SIM card
 - Your device's serial numbers

Step 3 — Loudspeaker Assembly



- Remove the 4 Phillips 00 screws securing the speaker assembly to the phone housing.

Step 4



- Carefully insert a small flathead screwdriver between the speaker assembly and the rear housing
- Pry the speaker assembly out of the phone and set it aside

Step 5 — Touch screen/digitizer



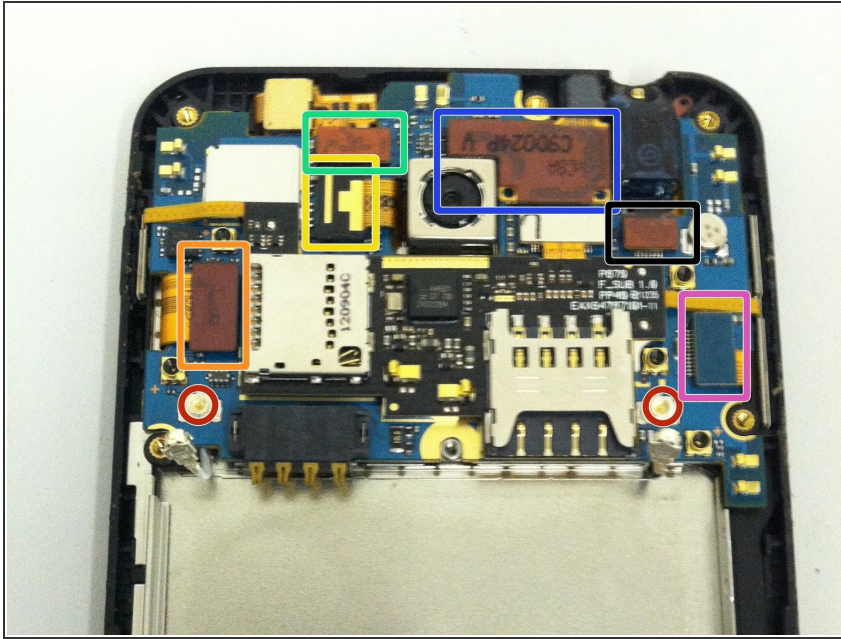
- Remove the remaining 6 screws securing the plastic frame to the back housing

Step 6



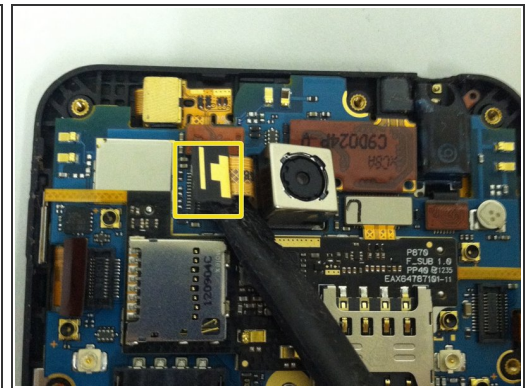
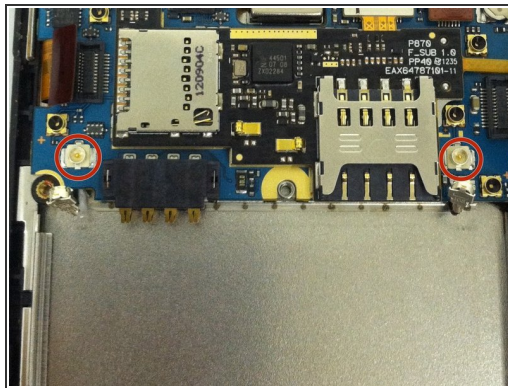
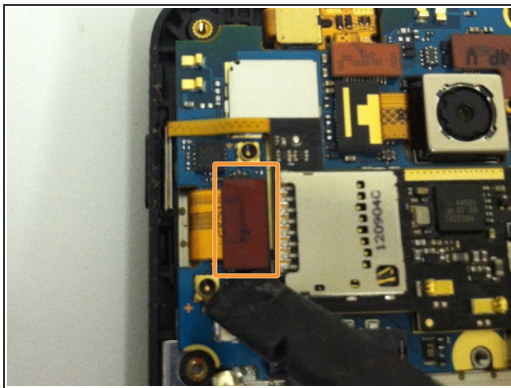
- Insert a black plastic spudger or a small flathead screwdriver between the back silver bezel and the black area and begin prying the bezel away from the rest of the phone
- Continue working your way around the phone, prying carefully with your prying tool
- When you work the frame free, set it aside

Step 7



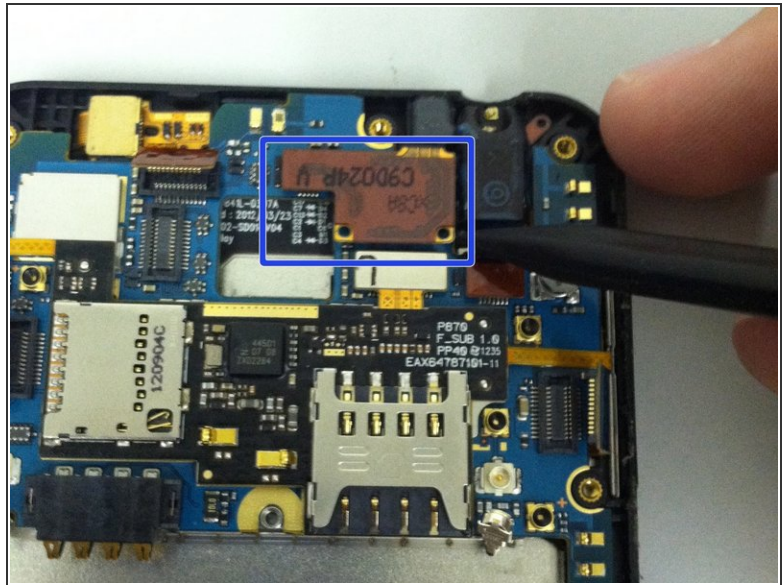
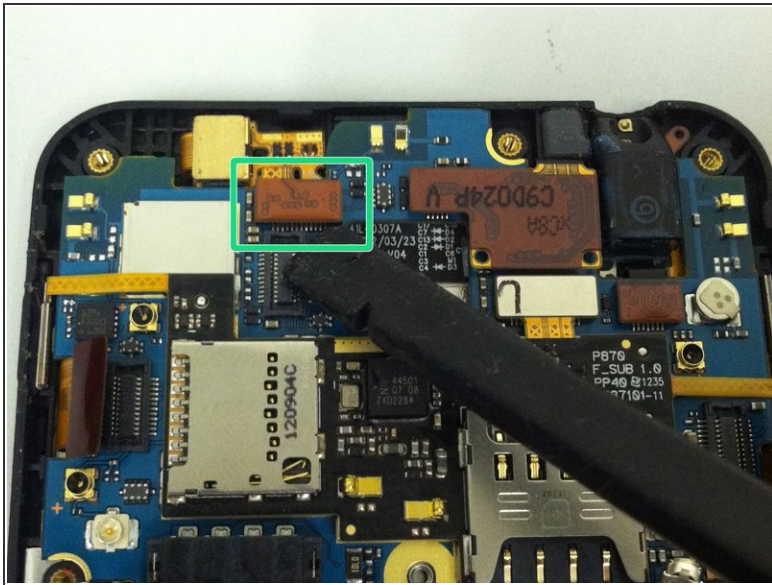
- Wifi and cell service antennas
- LCD connector
- Back camera connector
- Front camera connector
- Touch screen/ digitizer connector
- Charger port connector
- Headphone jack connector

Step 8



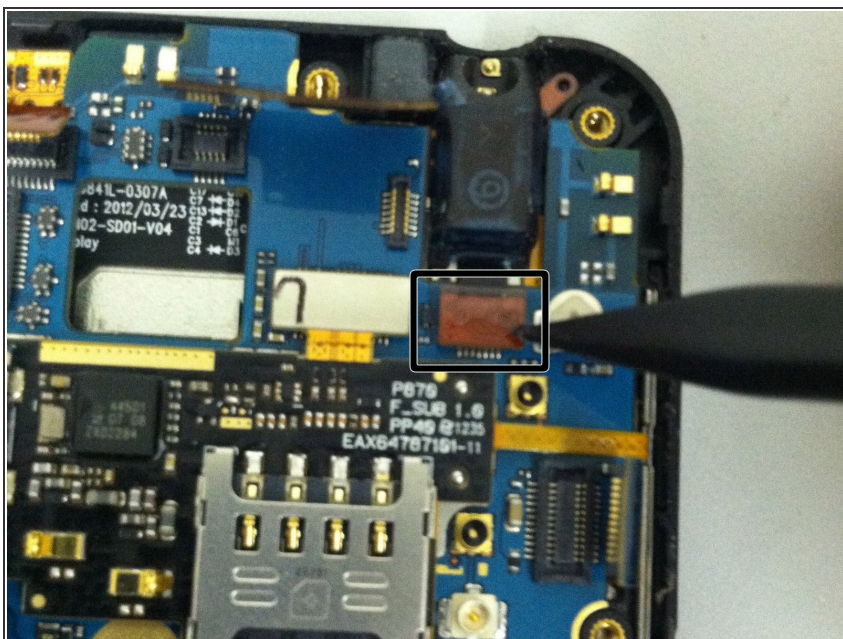
- With a spudger or safe open pry tool, carefully detach the LCD flex connector
- Release the two antennae from their connectors
- Release the back camera's flex from its connector

Step 9



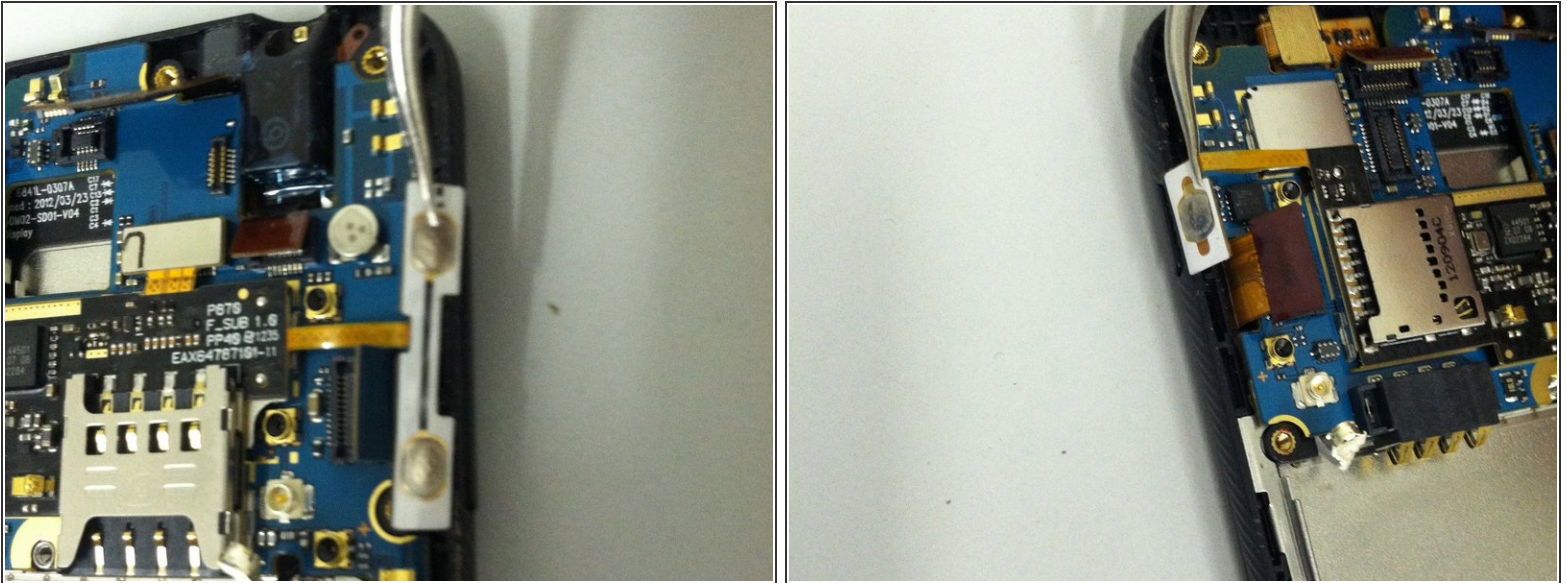
- Release the charging port flex from its connector
- Release the front camera's flex from its connector
- Release the touch screen/digitizer's flex cable from its connector

Step 10



- Release the headphone jack's flex cable from its connector

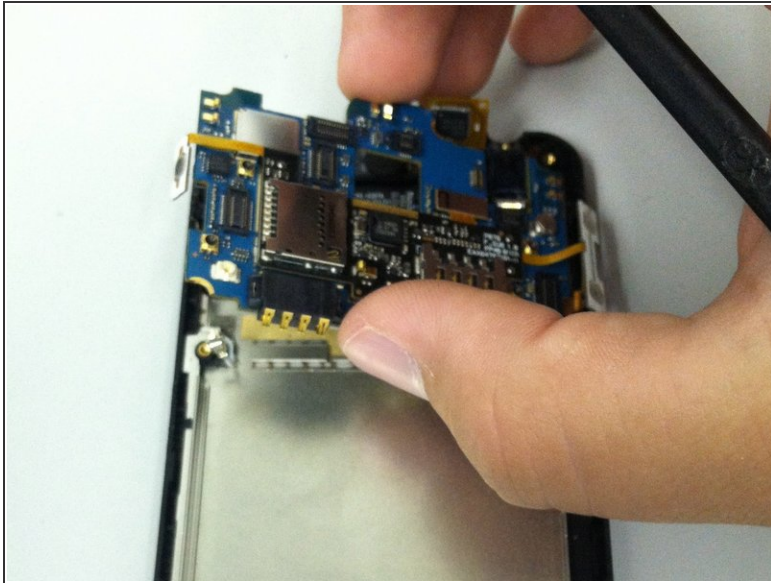
Step 11



- With a pair of tweezers, VERY carefully pull the volume button flex out of the rear housing
- Repeat the process with the power button flex cable

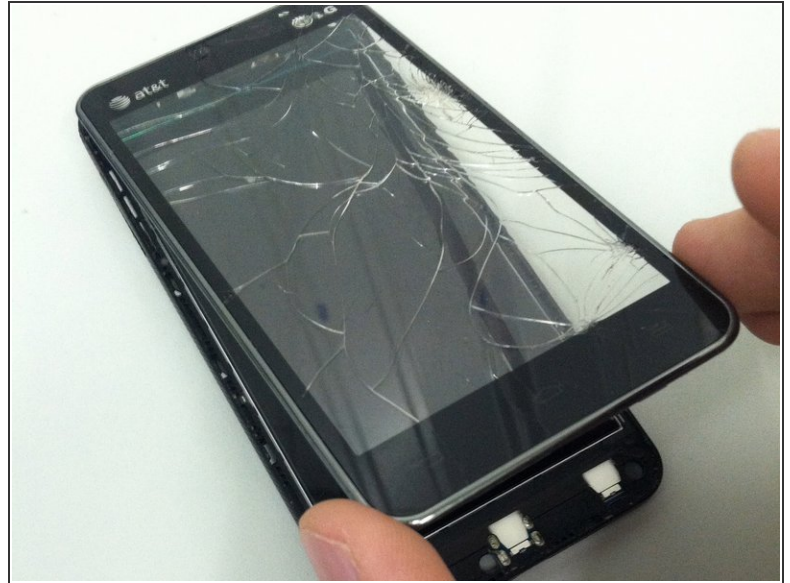
⚠ The power button and volume button flex cables will tear very easily, so be cautious

Step 12



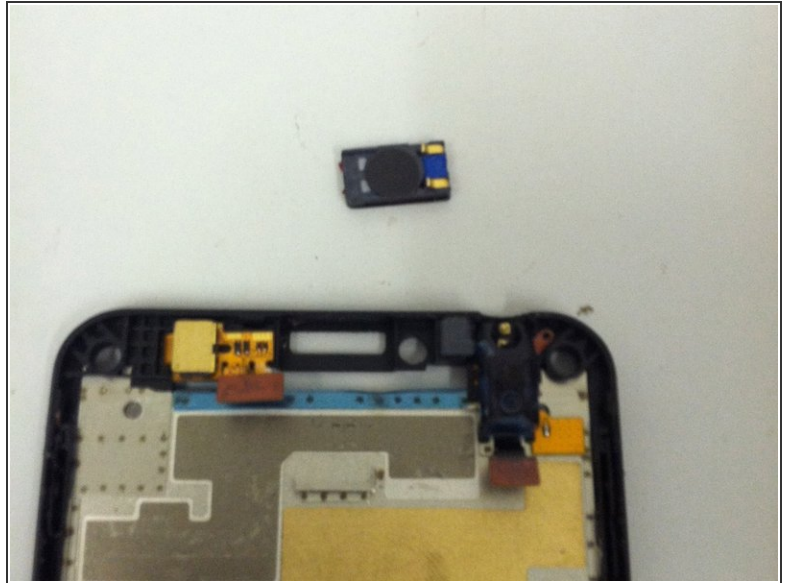
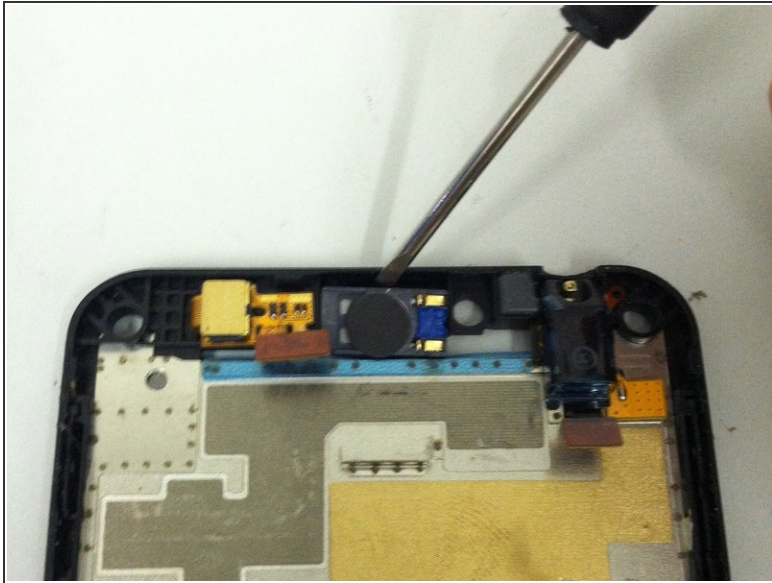
- Lift the motherboard away from the housing, taking extra care not to snag any of the antennae or flex cables
- Set the motherboard aside

Step 13



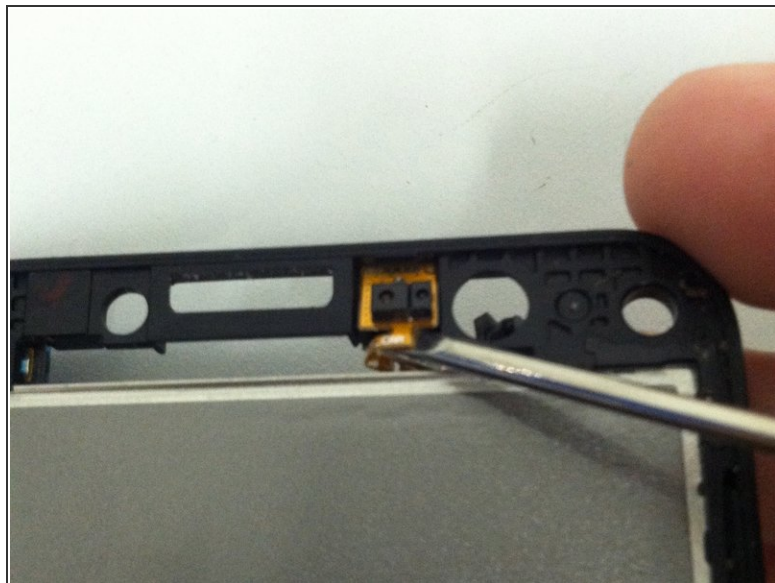
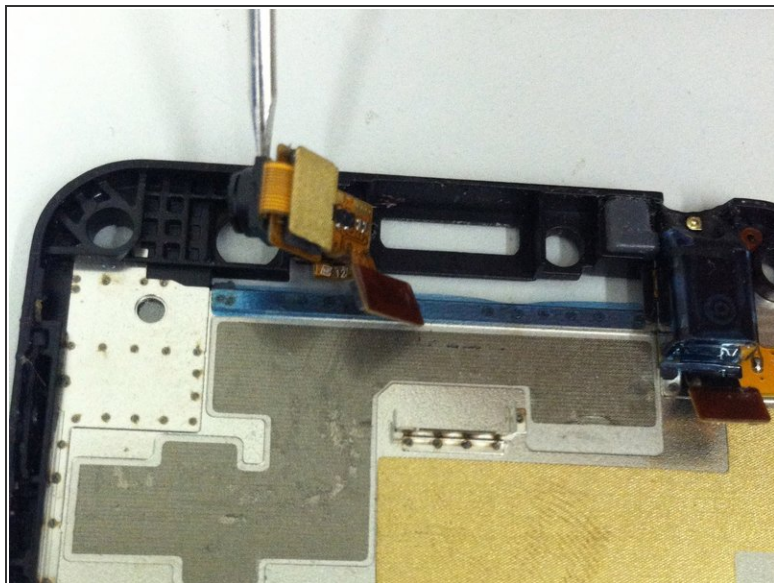
- Insert a small flathead screwdriver or black plastic spudger between the front silver bezel and the black plastic mid-frame
 - Gently pry on the bezel to release the clips adhering the screen to the mid-frame
 - Work your way around the phone, still using the small flathead or spudger, until the screen is fully separated
 - Remove the screen, taking care not to tear the flex cable that is still threaded through the housing.
- ✦ After carefully threading the digitizer and outer housing/bezel from the middle bracket you'll notice the digitizer is held on by a band of very strong adhesive - this will be destroyed when you take off the old digitizer. When you replace your digitizer you can use double-sided tape or epoxy to hold the new digitizer on the bezel.

Step 14 — Ear Speaker



- Insert a small flathead screwdriver or a black plastic spudger between the top of the ear speaker and the housing
- Carefully pry the ear speaker out of the phone and set it aside
- ☑ Be sure to note the orientation of the replacement speaker when you reassemble the device

Step 15 — Front Camera



- Using a spudger or a small flathead screwdriver, pry the front camera out of its socket, but to not remove it from the phone
- Turn the phone over and peel the adhesive portion of the camera's flex cable off of the phone
- Remove the camera and set it aside

To reassemble your device, follow these instructions in reverse order.