



LG Escape (p870) Rear Camera Replacement

This guide will show you how to replace the rear camera in your LG Escape (p870).

Written By: Brad



INTRODUCTION

This guide will show your how to replace the rear camera in your LG Escape (p870).



TOOLS:

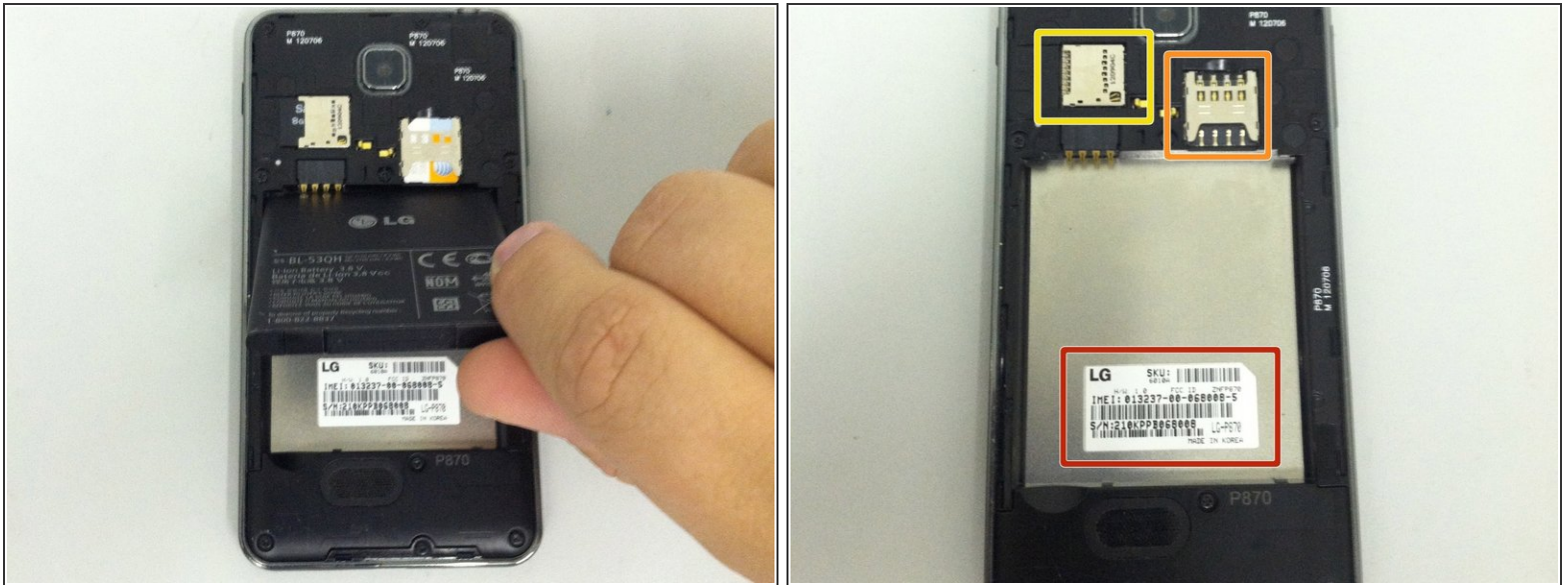
- [Phillips #00 Screwdriver](#) (1)
 - [Flathead 3/32" or 2.5 mm Screwdriver](#) (1)
 - [Spudger](#) (1)
-

Step 1 — Battery



- Turn the device over and pull the back plastic cover off by inserting your fingernail into the opening at the bottom of the phone and gently pulling.

Step 2



- With your finger and from the bottom edge, lift the battery out of the phone and set it aside.
- You now have access to:
 - Your SD card
 - Your SIM card
 - Your device's serial numbers

Step 3 — Loudspeaker Assembly



- Remove the 4 Phillips 00 screws securing the speaker assembly to the phone housing.

Step 4



- Carefully insert a small flathead screwdriver between the speaker assembly and the rear housing
- Pry the speaker assembly out of the phone and set it aside

Step 5 — Rear Camera



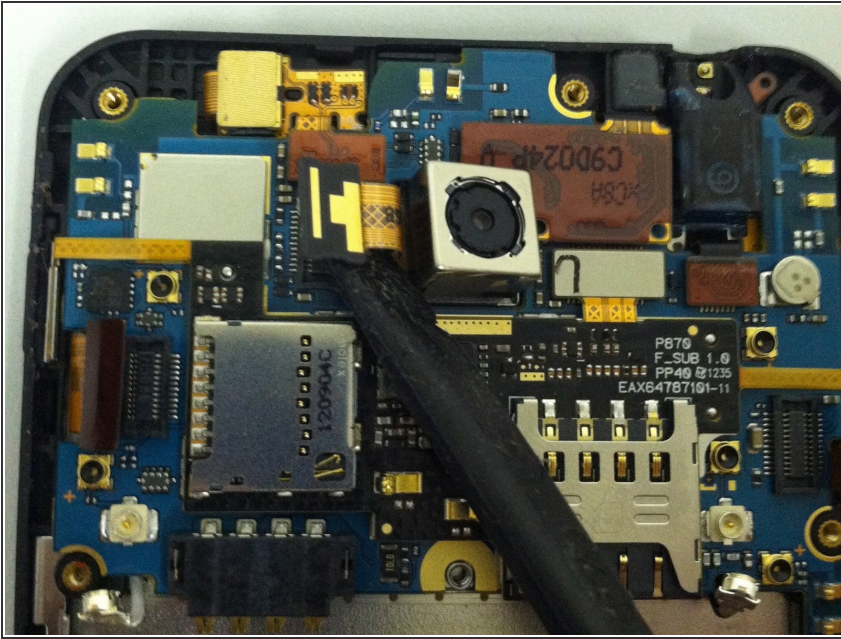
- Remove the remaining 6 screws securing the plastic frame to the back housing

Step 6



- Insert a black plastic spudger or a small flathead screwdriver between the back silver bezel and the black area and begin prying the bezel away from the rest of the phone
- Continue working your way around the phone, prying carefully with your prying tool
- When you work the frame free, set it aside

Step 7



- Use a plastic spudger or safe-open pry tool to release the camera's flex cable from its connector
- Remove the camera from the housing and set it aside

To reassemble your device, follow these instructions in reverse order.