



LG Flare Keyboard Replacement

How to remove the back panel of the "LG Flare" and access the mainboard, microphone, and keyboard.

Written By: Rob Mitchell



INTRODUCTION

How to remove the back panel of the "LG Flare" and access the mainboard, microphone, and keyboard.

TOOLS:

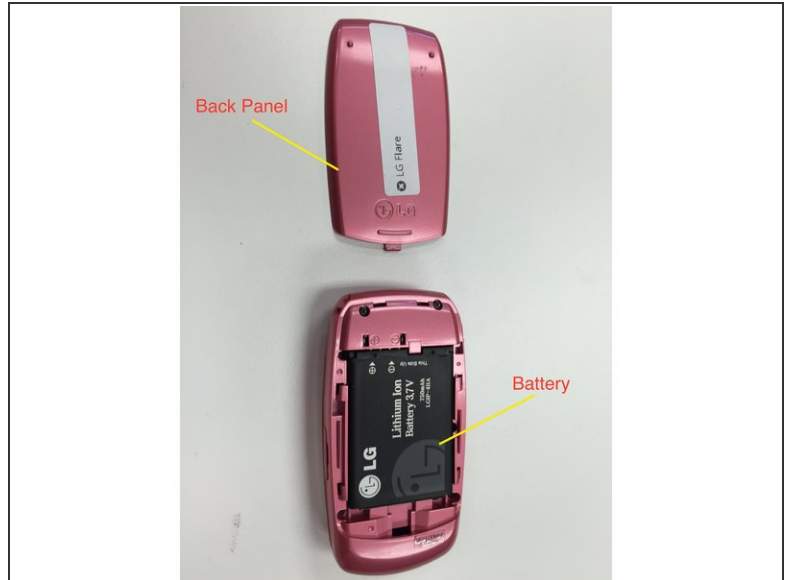
- [iFixit Opening Tools](#) (1)
 - [Phillips #000 Screwdriver](#) (1)
 - [Tweezers](#) (1)
-

Step 1 — Phone Keyboard



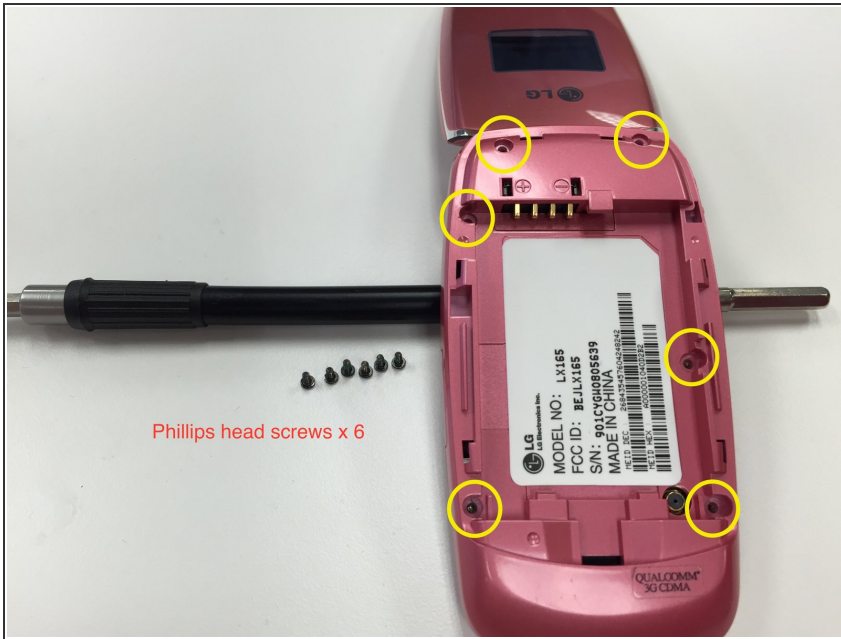
- Remove the back cover by pressing down on the raised lines located on the top middle of the back cover and sliding the cover towards the top of the phone.

Step 2



- Remove battery by using the smallest of the blue wedges in the iFixit tool kit to lift or pry the battery out of its designated compartment. Place the blue wedge under the battery on the left side (if the LG logo and "Lithium Ion" label are facing toward you) and pry upward to remove.

Step 3



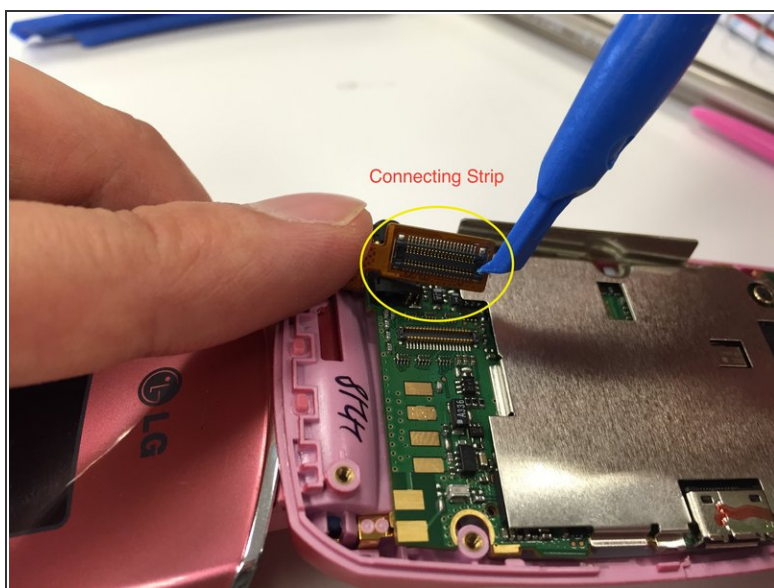
- Use the PH000 Phillips-head screwdriver to remove the 6 small screws that were under the battery on the back of the phone. These screws are circled in yellow on the photo.
- Make sure to hold the phone with your off hand to keep the phone from spinning while you unscrew the screws.
- Note: You may want to place the screws in a small Ziploc bag to avoid misplacing them.

Step 4



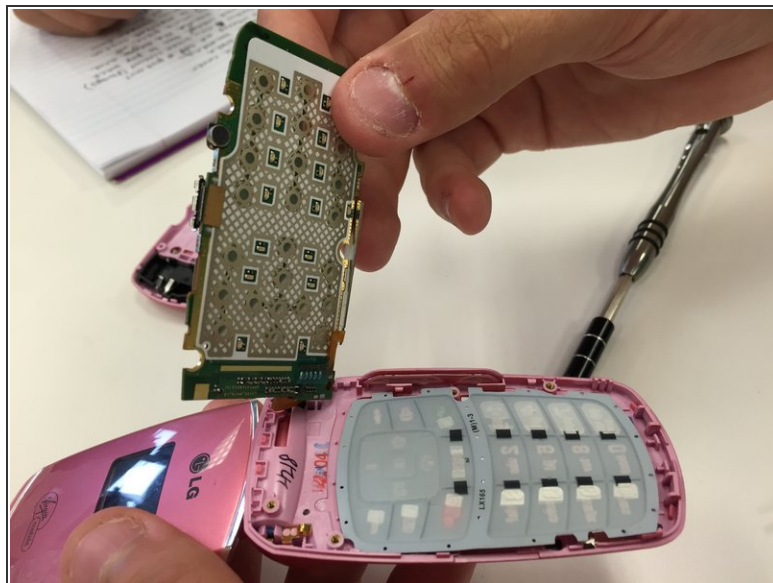
- Use the blue wedge to pop the back panel off. Start by placing the blue panel between the back panel and the charging port, and work your way around the edges until the whole back piece has been pried off.
- The small rectangular charging port cover may disconnect as well. This is okay; just set the cover aside with the screws, battery, and back cover.

Step 5



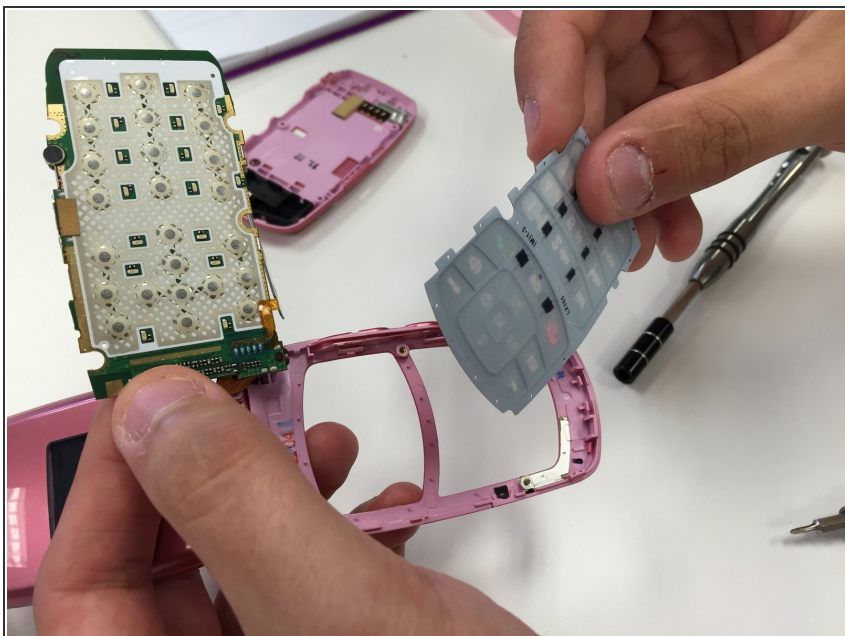
- Place the blue wedge between the orange connecting strip (located at the top right of the back of the phone) and the green circuit board.
- Carefully pry the connecting strip upward to remove it. The connecting strip and circuit board are fragile, so be sure not to apply too much pressure.

Step 6



- Use blue wedge to separate the two pink tabs above the green circuit board from front body of phone. The tabs are circled in yellow on the photo.
- Once the tabs are separated, use the blue prying tool or your fingers to remove the circuit.

Step 7



- Remove gel keyboard using your fingers or the blue wedge.
- To reassemble the device, follow the instructions in reverse order.

To reassemble your device, follow these instructions in reverse order.